



TA CATTLE

Annual Bull & Female Sale

Your One Stop Bull Shop



FRIDAY AT 1:30 PM

APRIL 8, 2022

WEST POINT LIVESTOCK / WEST POINT, NE

*Selling 90 Red Angus, Angus, SimAngus and Charolais Cross Bulls
plus 4 Red Angus Heifers and 100 Commercial Replacements*

A TA CATTLE

Annual Bull and Female Sale

FRIDAY AT 1:30 PM

April 8, 2022

WEST POINT LIVESTOCK / WEST POINT, NE

DVAuction

Broadcasting Real-Time Auctions



Welcome -

Welcome and thank you for your interest in our program. We want to thank everyone for coming to look or view our cattle online. The love of what we do drives us to bring our customers functional, maternally oriented cattle while excelling in growth and carcass. Without you, this sale wouldn't be possible. We are humbled to see all the repeat customers and thankful for the opportunity.

As a family operation that handles these cattle daily, we are confident in our genetics. We know how they perform on grass, in the feedlot, and on the grid—seeing these cattle mature assists in improving our genetics year after year. With feed costs as high as they are, bulls with these characteristics are a smart investment. If you have any questions regarding which sire groups would benefit you, feel free to call us, and we will gladly talk cattle with you.

This will be the final year we will be offering yearlings in the spring. As you look through the catalog, you will notice we are selling half-aged bulls that were held over just for this transition. We plan to have our annual bull sale December 16, 2022 with a select group of bred females. We are very excited for the future and feel this will help us better serve you.

Thanks again to all our customers, future customers, and everyone that helped make this sale possible. We hope to see you on sale day.

Thank you **TA CATTLE**



TACATTLE.COM

Contact us

Terry and Julie Albrecht
1905 H Avenue
Thurston, NE 68062
Cell: (402) 922-1001

Travis and Lexi Albrecht
Taryn, Amelia, Anson
502 20 Road
Thurston, NE 68062
Cell: (402) 922-1800

Andy and Abbie Albrecht
Atwood, Ariat
45212 861st Road
Bassett, NE 68714
Cell: (402) 922-1000

SALE LOCATION

West Point Livestock Auction
839 South Colfax | West Point, NE 68788
Brian Brester.....402-750-5821
Jon Shaben.....712-263-0755

SALE DAY CONTACTS

Terry Albrecht.....402-922-1001
Andy Albrecht.....402-922-1000
Travis Albrecht.....402-922-1800

AUCTIONEER

Matt Lowery.....308-750-6119

RINGMEN

Chris Beutler, Livestock Digital.....402-380-8244
Jason Hansen, Livestock Digital.....402-649-0550

SPECIAL GUESTS

Berrett Simon, Red Angus Association.....316-452-1792
Andy Albrecht, Top Dollar Angus.....402-922-1000

VETERINARIANS

Pender-Emerson Vet Clinic.....402-695-2202
Drs. James Albrecht and Melissa Heberer
Josh Beutler.....402-385-3155

ACCOMODATIONS

Horizon Inn and Suites.....402-372-1959
Super 8.....402-372-3998

ANNOUNCEMENTS

Announcements from the block take precedence over the information in this catalog.

CATTLE VIEWING

Cattle can be viewed online at DV Auction.com or if you would like to view them in person, call Travis to arrange a time.

ONLINE BIDDING

Visit DV Auction.com a few days before the sale to sign up for online bidding. The sale will be broadcast live.

RETAINED INTEREST

We are retaining ½ interest in all bulls in the sale. We are selling the remaining ½ interest, full possession, and full salvage value. This option gives TA Cattle the option to collect, use, and market semen from the bull and does not restrict the purchaser from doing the same. This collection, unless agreed otherwise, would be done at the expense of TA Cattle, at the buyer's convenience. Also at the time of purchase, the highest bidder on a retained interest bull may elect to purchase exclusive semen rights for 100% of the purchase price in addition to the purchased price on retained bulls. If a buyer elects to purchase exclusive semen rights, TA Cattle interest then becomes in herd use only, but TA Cattle retains all rights to use the bull within their herd.

GUARANTEE

All bulls selling for \$3000 or more are guaranteed for the first breeding season. A breeding season is defined as the 90 day period following the first turnout of the bull. If a replacement bull is available, he will be provided or if the buyer prefers, credit toward one bull will be given in the following sale, less salvage value of the injured bull. All injured bulls must be diagnosed by a veterinarian. Please notify us as soon as possible should injury occur and prior to the injured bull being sold for salvage.

VACCINATION RECORD

All cattle have been vaccinated, starting at 30 days of age, at grass turn out, and again at pre-weaning and post-weaning. They were poured and dewormed. Vaccinations include 7-way clostridial, IBR, BVD, P13, BRSV, haemophilus somnus, and pasturellas. Any positive test results will be noted with EPDs throughout the catalog. The open heifers have also been Bangs vaccinated. The bulls and heifers have had their pre-breeding shot—Express FP 5-VL5. If you would like specific details on products used please give us a call. The bulls will be sold as guaranteed breeders according to the sale terms and conditions of the RAAA. Load out can be done anytime during the sale after settlement.

DELIVERY

Free delivery up to 300 miles. Any bulls remaining will be hauled back to TA Cattle's feedlot and boarded free of charge until April 21. After that there will be a \$3.50/hd/day feed charge until they are picked up or delivered. If you would like TA Cattle to feed and breed the open heifers, let us know right after the sale so arrangements can be made. If you do not need our services, then heifers must be picked up sale day or the couple days following at West Point Livestock.

CALVING EASE STAR RATING

- ★★★★ **Sure shot calving ease**
- ★★★ **All cows and most heifers**
- ★★ **Calve easy on cows**
- ★ **Recommended for cows**



RED ANGUS ASSOCIATION

GUIDE TO EPDS

HB HerdBuilder Index – Need bulls for developing a profitable cowherd and maximizing the value of marketed progeny? Select a bull with a high HB value.

GM GridMaster Index – If you market all of your calf crop and want to increase the value of that calf crop, select a bull with a high GM value to maximize your profit.

CED Calving Ease Direct – Breeding Heifers? Select bulls with a high CED to increase the probability that the heifers will calve unassisted.

BW Birth Weight – Predicts differences in birth weight. BW is included in the CED EPD, so simplify your decisions by selecting bulls based on CED instead of BW.

WW Weaning Weight and YW Yearling Weight – Predicts differences in weight at weaning and yearling. While selection based on these growth measures can increase your payweight, be cautious what the bull's other EPDs are.

Milk Milk – Predicts differences in weaning weight of daughter's progeny due to milk production.

ME Maintenance Energy – Selecting bulls with a lower ME EPD will decrease the amount of feed his daughters will require to maintain body weight.

HPG Heifer Pregnancy – Retaining heifers? Select bulls with a high HPG to increase the percentage of exposures that result in a calving observation.

CEM Calving Ease Maternal – Another number to pay attention to if you are retaining heifers. Selecting bulls with a high CEM will increase the probability of those daughters calving unassisted.

STAY Stayability – The most important trait if your goal is developing cows that stay productive, thus increasing your profitability. Bulls that have a high Stay EPD are expected to sire daughters that remain productive in the herd until at least 6 years of age.

MARB Marbling Score – Select bulls with high MARB EPD to increase the number of progeny that grade Choice or Prime.

YG Yield Grade – Marketing calves on a grid? Placing selection pressure on YG EPD will decrease the number of YG discounts on gridmarketed progeny.

CW Carcass Weight – Selecting bulls with a high CW EPD will increase the weight of the hanging carcass, which directly impacts revenue.

REA Rib Eye Area – Need to add muscle? Select bulls with a high REA EPD to increase rib eye area, which favorably increases Yield Grade.

BF Backfat – Need to reduce waste in carcasses? Select bulls with a low FAT EPD to reduce backfat, which favorably increases Yield Grade.



SIMMENTAL ASSOCIATION

GUIDE TO EPDS

Calving Ease (CE): Percent of unassisted births when used on heifers.

Birth Weight (BW): Pounds of birth weight.

Weaning Weight (WW): Pounds of weaning weight.

Yearling Weight (YW): Pounds of yearling weight.

Maternal Calving Ease (MCE): Percent of unassisted births in first-calving daughters.

Milk (MLK): Pounds of weaning weight due to milk.

Maternal Weaning Weight (MWW): Pounds of weaning weight due to milk and growth.

\$Indexes: Though EPDs allow for the comparison of genetic levels for many economically important traits, they only provide a piece of the economic puzzle. That's where \$ indexes come in. Through well conceived, rigorous mathematical computation, \$ indexes blend EPDs and economics to estimate an animal's overall impact on your bottom line. The same technology that led to the dramatic progress in swine, poultry and dairy genetics over the last several decades was used to develop the following \$ indexes:

- **All-Purpose Index (API):** Evaluates sires for use on the entire cow herd (bred to both Angus first-calf heifers and mature cows) with the portion of their daughters required to maintain herd size retained and the remaining heifers and steers put on feed and sold grade and yield.
- **Terminal Index (TI):** Evaluates sire for use on mature Angus cows with all offspring put on feed and sold grade and yield.

Using API and TI: First, determine which index to use; if you're keeping replacements use API, if not, TI. Then, just as with EPDs, zero in on the unit difference between bulls. (As described above, index units are in dollars per cow exposed.) The difference can be used to determine how much a bull is worth compared to another. Or, put another way, how much you can pay for one bull compared to another. For example, when buying an all-purpose type sire, you can quickly figure a bull scoring +100 for API is worth an extra \$6,000 over a +50 bull if both are exposed to 30 cows over 4 years ($\$50 \text{ diff.} \times 30 \text{ hd.} \times 4 \text{ yr.} = \$6,000$). A percentile-ranking chart is required to determine where a bull's index value ranks him relative to other bulls in the breed. For percentile rankings or more detailed information about EPDs and \$ indexes visit www.simmental.org.

Yield Grade (YG): Yield grade score.

Carcass Weight (CW): Pounds of carcass weight.

Marbling (MRB): Marbling score. Back Fat (BF): Inches of backfat.

Ribeye Area (REA): Square inches of ribeye.

All-Purpose Index (API): Dollars per cow exposed under an all-purpose-sire scenario. (See below for more details.)

Terminal Index (TI): Dollars per cow exposed under a terminal-sire scenario (See below for more details.)

107 REPLACEMENT HEIFERS

Moderate group of heifers that are going to make fantastic momma cows. I don't think a guy could go wrong with any of these. All proven herd sires that bring great mothering ability, udder suspension, and teat size. These are the kind that will stay in the herd for years and pay for themselves quickly.

Ready to breed whenever it suits your operation!

Multimin 90 - Pre Breeding - Tract Scored - Guaranteed Open



Red Angus



Red Angus



Red Angus
From Aschoff Cattle



Char/Red Angus
From Aschoff Cattle



Char/Red Angus
Sired by LT Authority
& LT Patriot



Black Angus



Black SimAngus



RWF F1 Hereford/Red Angus



BWF F1 Hereford/Black Angus





Top Dollar Angus Feeder Calf Program

Promote Your Verified Genetic Investment

Top Dollar Angus is the industry leader in third-party genetic verification and marketing assistance for superior Angus and Red Angus-based feeder cattle. Our program stamps a unique identity on the 'best of the best' by verifying and then showcasing their genetic merit. The Top Dollar Angus team works directly with a large number of feedyards and buyers to provide them with documented superior feeder cattle, coupled with genetic risk mitigation and the precision understanding they need to pursue your cattle with absolute confidence.

Top Dollar Angus enables cow-calf producers to benefit from the genetic value already built into their herds. Producers that invest in high-end genetics, as well as strong health and nutrition programs, need a means of positively differentiating their calves from average cattle. Top Dollar Angus does that. Industry demand is strong for genetically superior feeder calves with the right supporting documentation. Don't make buyers guess, let them know by putting the Top Dollar Angus badge of honor on your premium genetic investment.



How it Works:

Our program begins with a FREE genetic evaluation based on the current/past herd sires used in your program. We evaluate the sires used in your herd based on their growth and carcass merit characteristics. A herd that qualifies for Top Dollar Angus has cattle that are at least 50% Angus or Red Angus and also ranks in the top 25% of its respective breed for growth and carcass merit.

Once qualified, our team provides boots on the ground to share this valuable information with buyers looking for high quality cattle that will go on feed and perform. Our team has experience coast to coast and works directly in all channels (video, local auction, direct and internet). Plus, we have the resources to provide a very fast turn-around.

What our Customers Say:

"Top Dollar Angus is a program that benefits all levels of the industry. The seedstock producer is rewarded for providing superior genetics to the commercial cattleman, who in turn supplies the feeder with efficient cattle that will produce top-end carcasses. As Top Dollar Angus continues to raise their qualifying standard, these cattlemen will have to up their game to purchase the genetics that will fit the program. These cattlemen will see a return on investment when offering reputation feeders at market time."

– Jon Pedotti – San Simeon Creek Ranch, California



Nate Smith, General Manager • (620) 546-4839 • nate@topdollarangus.com
 Kacey Jacobson • (701) 391-4646 • kacey@topdollarangus.com
 Jake Feddes • (406) 581-8157 • jake@topdollarangus.com
 Adam Menker • (419) 310-5344 • adam@topdollarangus.com
 Jason Gagnon • (559) 723-6362 • jason@topdollarangus.com
 Andy Albrecht • (402) 922-1000 • andy@topdollarangus.com

www.topdollarangus.com

better equipped **BETTER RESULTS**

Your ABS Representative is equipped with the finest people, technology, research, quality, and genetics. We have the ability to ensure the long term direction of your herd is on track and to make your breeding program a success. Together, we can accomplish your goals.



get to know

YOUR LOCAL REPRESENTATIVE

Your ABS Representative is backed by the finest in breeding, research and management. Our commitment is to give you the most valuable genetics and programs for your dollar.

TRAVIS ALBRECHT Thurston, NE
402-922-1800 - talbrecht03@hotmail.com



SET UP FOR SUCCESS

✓ Full Genetic Services

*Genetic selection, Custom A.I. and Synchronization Services
Implementation of Synchronization Programs, Calf Marketing Assistance*

✓ We at ABS strive to be leaders and have the resources to help you at every turn.

STAY IN TOUCH

 facebook.com/absbeef  @absbeef

1-800-ABS-STUD | ABSBEEF.COM

Feature Bull



LOT 1



TAC DRIFTER H10 - MATERNAL BROTHER OF LOT 1

1

REG
4392135

DOB
3/15/20

TATTOO
H254

CALVING EASE
★★★★

TAC PERFECT STORM H254

5L THE REAL DEAL 1687-143B
5L PERFECT STORM 1201-172D
5L RUBY 829-1201

TAC SECURITY D56
TAC MS VERNA F144 ET
3SCC VERNA B47

5L DEFENDER 560-30Z
5L FIREFLY 275-1687
BUF CRK THE RIGHT KIND U199
5L RUBY 162-829
5L BLOCKADE 2218-30B
LAZJY MS BRIER 494-976
BIEBER HARD DRIVE Y120
3SCC VERNA U105

ACT BW (RATIO)
80 (112)
WW RATIO
107
YW RATIO
103
WDA
3.05

DAM INFO AGE: 4 MPPA: 104 MATURE WT: 1068

PRO	S	HB	GM	CED	BW	WW	YW	MLK	ME	HP	CEM	ST	MB	YG	CW	REA	BF
108	39	69	15	-1.8	64	103	23	8	9	9	14	0.68	0.04	40	0.29	0.00	0.00
20%	76%	4%	20%	49%	35%	35%	68%	79%	81%	14%	71%	6%	34%	5%	17%	16%	

100% AR

ADJ IMF (RATIO) **3.75** (121) ADJ REA (RATIO) **12.51** (96)

The dam of lot 1 is a full sibling to Drifter's mother. Drifter was the sale highlight last year selling to Twedt Red Angus and Rhodes Red Angus. Stacking Security, Perfect Storm, and Hard Drive has female maker written all over H254. As you look through the offering, you see the influence of these three sires scattered throughout the catalog. He combines all three!



3SCC VERNA B47 - GRANDDAM OF LOT 1



TAC SECURITY D56 - MATERNAL GRANDSIRE OF LOT 1

TWO-YEAR-OLD *Red Angus Bulls*



LOT 2

2	TAC H255															
	REG 4392061	5L THE REAL DEAL 1687-143B		5L DEFENDER 560-30Z	ACT BW (RATIO) 85 (119)											
	DOB 3/15/20	5L PERFECT STORM 1201-172D		5L FIREFLY 275-1687	WW RATIO 105											
	TATTOO H255	5L RUBY 829-1201		BUF CRK THE RIGHT KIND U199	YW RATIO 106											
CALVING EASE ★★★★	TAC FRED A25	5L RUBY 162-829	WDA 3.13													
	TAC MS LINDA F327	SPUR GROUND POUNDER Y114														
	TAC A132	2RJL SIERRA Y725														
		LSF TAKEOVER 9943W														
		TBLC MISS 605 CHEYENNE 132														
DAM INFO AGE: 4 MPPA: 102 MATURE WT: 1162																
PRO S	HB	GM	CED	BW	WW	YW	MLK	ME	HP	CEM	ST	MB	YG	CW	REA	BF
82	36	47	13	-0.6	64	104	24	8	11	8	13	0.47	0.07	29	0.06	0.00
61%	82%	27%	39%	73%	35%	32%	62%	78%	53%	26%	80%	34%	51%	25%	64%	16%
100% AR				ADJ IMF (RATIO)	2.40 (77)	ADJ REA (RATIO)	12.81 (98)									



5L PERFECT STORM 1201-172D - SIRE OF LOT 1 & 2

Females are going to be in high demand the next few years while we try to build back cow numbers. These Fred females are heavy milking, work horse style females that go back to High Capacity. They never have wowed you on paper but boy do they work. Talking to Larry, the Ruby cow family may be one of his favorites, leading us to Perfect Storm.

ATA CATTLE

Annual Bull and Female Sale

OUR SALE DATE IS CHANGING!

December 16, 2022
CHECK TACATTLE.COM FOR MORE INFO



LOT 4

ATA CATTLE



LOT 5



C-BAR LEVERAGE 8115F - SIRE OF LOTS 4-8

Leverage was our pick from C-Bar Red Angus two years ago going back to Stony, who is one of the most influential cows in the breed.



3SCC VERNA B47 - DAM OF LOT 5

4 TAC LEVERAGE H131

REG 4392167
DOB 3/3/20
TATTOO H131
CALVING EASE ★★

SPUR FRANCHISE OF GARTON
C-BAR LEVERAGE 8115F
ADHM STONY 503C

SPUR FRANCHISE 7070
H & H IRENE LASS 0135
LSF SAGA 1040Y
C-BAR MS STONY A302
LJC MISSION STATEMENT P27
GP FAITH 803
BECKTON LANCER F442 T
BUF CRK JULIET N036

GP WALLACE 016
TAC JULIET B921
BUF CRK JULIET W067

ACT BW (RATIO)
83 (107)
WW RATIO
81
YW RATIO
93
WDA
2.86

DAM INFO AGE: 8 MPPA: 91 MATURE WT: 1552

PRO	S	HB	GM	CED	BW	WW	YW	MLK	ME	HP	CEM	ST	MB	YG	CW	REA	BF
108	63	45	13	-1.8	56	94	20	-2	10	7	17	0.33	-0.05	23	0.34	0.00	
20%	29%	30%	45%	49%	63%	55%	90%	26%	67%	44%	32%	70%	7%	48%	12%	15%	

100% AR **ADJ IMF (RATIO)** 1.99 (64) **ADJ REA (RATIO)** 12.21 (93)

This bull is really good any way you look at him. It was really hard not put this one in front of you last year, but wanted to show you why we are transitioning to aged bulls. I challenge you to find a better bull with these numbers, it's very hard to do. Maternal plus carcass.

5 TAC LEVERAGE H250

REG 4392055
DOB 3/14/20
TATTOO H250
CALVING EASE ★★

SPUR FRANCHISE OF GARTON
C-BAR LEVERAGE 8115F
ADHM STONY 503C

SPUR FRANCHISE 7070
H & H IRENE LASS 0135
LSF SAGA 1040Y
C-BAR MS STONY A302
LACY GOLD BAR 8123
BIEBER LAURA 158W
BASIN TREND SETTER 455S
3SCC VERNA S154

BIEBER HARD DRIVE Y120
3SCC VERNA B47
3SCC VERNA U105

ACT BW (RATIO)
80 (103)
WW RATIO
80
YW RATIO
88
WDA
2.76

DAM INFO AGE: 8 MPPA: 99 MATURE WT: 1654

PRO	S	HB	GM	CED	BW	WW	YW	MLK	ME	HP	CEM	ST	MB	YG	CW	REA	BF
128	55	73	14	-2.2	52	86	26	1	9	9	15	0.66	-0.04	31	0.36	-0.01	
5%	46%	2%	26%	42%	77%	71%	40%	39%	79%	17%	49%	8%	8%	21%	10%	8%	

100% AR **ADJ IMF (RATIO)** 1.95 (63) **ADJ REA (RATIO)** 11.99 (92)

Natural calf of 3SCC Verna B47, the dam of Blockade E66 and granddam of Drifter H10. Her influence sells throughout the catalog. Thank you to Sonstegards for the opportunity of owning this great female. The set of daughters she has left us is truly impressive.

WATCH AND BID ONLINE!

DVAuction
Broadcasting Real-Time Auctions

6 TAC LEVERAGE H68

REG 4392111
DOB 2/27/20
TATTOO H68
CALVING EASE ★★

SPUR FRANCHISE OF GARTON
C-BAR LEVERAGE 8115F
ADHM STONY 503C

5L BLOCKADE 2218-30B
TAC TAWNY E42
TAC TAWNY A15-X604

SPUR FRANCHISE 7070
H & H IRENE LASS 0135
LSF SAGA 1040Y
C-BAR MS STONY A302
5L DEFENDER 560-30Z
5L OPAL 656-2218
RED TER-RON RELOAD 703T
3SCC TAWNY X604

ACT BW (RATIO)	63 (87)
WW RATIO	94
YW RATIO	92
WDA	2.75

DAM INFO	AGE: 5	MPPA: 99	MATURE WT: 1084													
PRO S	HB	GM	CED	BW	WW	YW	MLK	ME	HP	CEM	ST	MB	YG	CW	REA	BF
81	45	37	15	-3.3	52	84	23	-3	10	7	14	0.49	-0.10	11	0.42	0.01
63%	66%	49%	16%	23%	77%	74%	72%	22%	65%	39%	71%	30%	2%	88%	6%	29%

100% AR **ADJ IMF (RATIO)** 3.93 (127) **ADJ REA (RATIO)** 13.93 (107)

Heifer bull deluxe that will be a true cow maker. The Blockade females have an unmatched mothering instinct with picture perfect udder and teat size. His granddam, Tawny, goes back to the great Basin Trend Setter.



TAC REBOURNE F105 ET - SIRE OF LOTS 9-10



7 TAC LEVERAGE H400

REG 4392107
DOB 3/28/20
TATTOO H400
CALVING EASE ★★

SPUR FRANCHISE OF GARTON
C-BAR LEVERAGE 8115F
ADHM STONY 503C

RHRA GOLD RUSH 402 17T
TAC A408
OLC BELGA R408

SPUR FRANCHISE 7070
H & H IRENE LASS 0135
LSF SAGA 1040Y
C-BAR MS STONY A302
CCF GOLD BAR 0251
RHRA MATTIE CHEY 019 402P
OLC VALOR N131
OLC BELGA L407

ACT BW (RATIO)	78 (101)
WW RATIO	101
YW RATIO	93
WDA	2.98

DAM INFO	AGE: 9	MPPA: 102	MATURE WT: 1400													
PRO S	HB	GM	CED	BW	WW	YW	MLK	ME	HP	CEM	ST	MB	YG	CW	REA	BF
89	59	30	14	-1.7	52	82	30	5	11	9	16	0.37	-0.03	14	0.26	0.01
50%	37%	65%	36%	52%	77%	78%	10%	62%	41%	10%	47%	60%	11%	82%	21%	45%

100% AR **ADJ IMF (RATIO)** 2.42 (78) **ADJ REA (RATIO)** 12.42 (95)

Goes back to Gold Rush the sire of Hard Drive. If you need a heifer bull with power and carcass, this is a solid option.

9 TAC REBOURNE H226

REG 4392095
DOB 3/11/20
TATTOO H226
CALVING EASE ★★

5L BOURNE 117-48A
TAC REBOURNE F105 ET
SDCC MARI GOLD 501W

TAC PROSPECT C2
TAC DANA E71
3SCC DANA A479

5L ADVANTAGE 3267-221Y
5L ROXIE 854-117
RED HILL B571 JULIAN 84S
BUF CRK MARI GOLD T132
LSF PROSPECT 2035Z
VF PRINCESS ANN A236-054
BHR GOLDEN BOY 854
BSKF DANA X761

ACT BW (RATIO)	76 (103)
WW RATIO	105
YW RATIO	101
WDA	3.06

DAM INFO	AGE: 5	MPPA: 103	MATURE WT: 1230													
PRO S	HB	GM	CED	BW	WW	YW	MLK	ME	HP	CEM	ST	MB	YG	CW	REA	BF
75	51	25	11	-1.9	63	98	30	2	12	6	14	0.38	-0.01	17	0.36	0.03
73%	54%	76%	67%	48%	36%	45%	13%	47%	32%	62%	62%	56%	16%	72%	10%	76%

100% AR **ADJ IMF (RATIO)** 2.72 (98) **ADJ REA (RATIO)** 14.04 (104)

Rebourne has that true herd bull look. He is a very easy keeper that never has an off day. The natural thickness and foot size set him apart from the rest. This bull is out of a very nice Prospect daughter, so performance is not a question.

8 TAC LEVERAGE H451

REG 4392127
DOB 4/4/20
TATTOO H451
CALVING EASE ★★

SPUR FRANCHISE OF GARTON
C-BAR LEVERAGE 8115F
ADHM STONY 503C

3SCC DICTATE C74
TAC PRINCESS ANN E81
VF PRINCESS ANN A236-054

SPUR FRANCHISE 7070
H & H IRENE LASS 0135
LSF SAGA 1040Y
C-BAR MS STONY A302
3SCC DOMINOR W338
MESSMER GINNIE V536
LJC MISSION STATEMENT P27
LARSON PRINCESS ANN 054-409

ACT BW (RATIO)	67 (90)
WW RATIO	100
YW RATIO	95
WDA	2.95

DAM INFO	AGE: 5	MPPA: 100	MATURE WT: 1086													
PRO S	HB	GM	CED	BW	WW	YW	MLK	ME	HP	CEM	ST	MB	YG	CW	REA	BF
86	48	38	14	-2.3	61	104	31	10	9	8	16	0.23	-0.04	28	0.48	0.01
55%	59%	47%	28%	40%	47%	32%	8%	87%	80%	21%	43%	91%	8%	29%	4%	41%

100% AR **ADJ IMF (RATIO)** 1.95 (63) **ADJ REA (RATIO)** 13.23 (101)

Leverage heifer bull with a different twist. Going back to the performance leader VF Princess Anne cow, who is also the dam to Prospect and Red Rock.

10 TAC REBOURNE H146

REG 4392173
DOB 3/3/20
TATTOO H146
CALVING EASE ★★

5L BOURNE 117-48A
TAC REBOURNE F105 ET
SDCC MARI GOLD 501W

BHR GOLDEN BOY 854
3SCC DANA A479
BSKF DANA X761

5L ADVANTAGE 3267-221Y
5L ROXIE 854-117
RED HILL B571 JULIAN 84S
BUF CRK MARI GOLD T132
BHR GOLDEN BOY 453B
LSF RED FAY LA425 P4025
STEVENSON SALUTE H505T
BIEBER TITAN DANA 803Z

ACT BW (RATIO)	80 (103)
WW RATIO	102
YW RATIO	93
WDA	2.94

DAM INFO	AGE: 9	MPPA: 104	MATURE WT: 1550													
PRO S	HB	GM	CED	BW	WW	YW	MLK	ME	HP	CEM	ST	MB	YG	CW	REA	BF
59	46	14	12	-2.1	57	82	28	2	11	6	15	0.40	-0.04	5	0.24	0.02
91%	64%	92%	55%	43%	60%	78%	21%	45%	51%	68%	60%	51%	9%	96%	24%	59%

100% AR **ADJ IMF (RATIO)** 2.67 (86) **ADJ REA (RATIO)** 13.41 (103)

Rebourne heifer bull that has all the same pieces of lot 9. 501W has 21 direct daughters in production at our place right now. That is a testament of what we think of her.



5L BOURNE 117-48A- SIRE OF LOTS 11-12

Bourne is one of the most heavily used bulls in the breed. They are consistently small at birth. These two would make a great duo on a heifer project. Two peas in a pod.



TAC A191 - SIRE OF LOTS 13-14

A191 is still the go to heifer bull, the kind that just doesn't go out of style. Come easy, have crazy calf vigor and make awesome females. Not sure you if you ask any more from a sure shot heifer candidate.

11 TAC BOURNE H14

REG 4392137
DOB 2/20/20
TATTOO H14
CALVING EASE ★★★★★

DAM INFO AGE: 4 MPPA: 99 MATURE WT: 1066

PRO	S	HB	GM	CED	BW	WW	YW	MLK	ME	HP	CEM	ST	MB	YG	CW	REA	BF
78	45	33	11	-3.7	62	97	27	-2	15	3	14	0.50	0.13	17	-0.09	0.03	
68%	66%	58%	68%	17%	40%	48%	35%	24%	3%	98%	69%	28%	84%	73%	91%	69%	

100% AR ADJ IMF (RATIO) 2.36 (76) ADJ REA (RATIO) 11.72 (90)

5L ADVANTAGE 3267-221Y
5L BOURNE 117-48A
5L ROXIE 854-117
BROWN RED OAK A7639
TAC MS SLEEK F528
TAC MS SLEEK D9

BUF CRK THE RIGHT KIND U199
5L ADINA 195-3267
5L SIGNATURE 5615
XXX ROXIE 854 MR
HUST CHIEF SEQUOYA R336
BROWN MS P707 Y7686
TAC A191
TAC SLEEK B91

ACT BW (RATIO) 69 (99)
WW RATIO 98
YW RATIO 97
WDA 2.75

13 TAC H369

REG 4392129
DOB 3/25/20
TATTOO H369
CALVING EASE ★★★★★

DAM INFO AGE: 6 MPPA: 101 MATURE WT: 1284

PRO	S	HB	GM	CED	BW	WW	YW	MLK	ME	HP	CEM	ST	MB	YG	CW	REA	BF
82	33	49	15	-3.4	60	99	24	5	13	7	12	0.58	0.19	25	-0.02	0.05	
62%	86%	22%	23%	21%	51%	44%	64%	65%	20%	55%	83%	16%	97%	42%	81%	96%	

100% AR ADJ IMF (RATIO) 2.31 (74) ADJ REA (RATIO) 12.87 (98)

HXC CONQUEST 4405P
LSF WIDELOAD R5014 U8061
TBLC CHEYENNE 605
TBLC MISS TANK 678
JACOBSON WORTH 1066
3SCC NET GAIN B615
TAC JUANADA D3349
O C C JUANADA 603R

ACT BW (RATIO) 68 (90)
WW RATIO 102
YW RATIO 103
WDA 3.23



12 TAC BOURNE H111

REG 4392063
DOB 3/1/20
TATTOO H111
CALVING EASE ★★★★★

DAM INFO AGE: 6 MPPA: 95 MATURE WT: 1280

PRO	S	HB	GM	CED	BW	WW	YW	MLK	ME	HP	CEM	ST	MB	YG	CW	REA	BF
96	74	23	14	-3.8	54	82	27	-6	16	7	16	0.47	0.14	10	-0.11	0.04	
37%	13%	80%	27%	16%	71%	78%	35%	15%	3%	55%	45%	34%	88%	89%	93%	89%	

100% AR ADJ IMF (RATIO) 2.58 (83) ADJ REA (RATIO) 11.18 (85)

5L ADVANTAGE 3267-221Y
5L BOURNE 117-48A
5L ROXIE 854-117
TAC FRED A25
TAC MS SYSCO D235
TAC SYSCO A10

BUF CRK THE RIGHT KIND U199
5L ADINA 195-3267
5L SIGNATURE 5615
XXX ROXIE 854 MR
SPUR GROUND POUNDER Y114
2RJL SIERRA Y725
3SCC HOB0 X05
3SCC SYSCO X55

ACT BW (RATIO) 75 (99)
WW RATIO 89
YW RATIO 88
WDA 2.67

14 TAC TAKEOVER H362

REG 4392059
DOB 3/24/20
TATTOO H362
CALVING EASE ★★★★★

DAM INFO AGE: 8 MPPA: 100 MATURE WT: 1414

PRO	S	HB	GM	CED	BW	WW	YW	MLK	ME	HP	CEM	ST	MB	YG	CW	REA	BF
90	41	49	10	-1.1	69	112	22	6	11	5	14	0.43	0.03	30	0.30	0.01	
47%	73%	22%	79%	64%	18%	18%	81%	71%	44%	82%	62%	43%	32%	22%	16%	45%	

100% AR ADJ IMF (RATIO) 1.93 (62) ADJ REA (RATIO) 12.95 (99)

LSF TAKEOVER 9943W
TAC A191
TBLC MISS 605 CHEYENNE 191
GP WALLACE 016
TAC SUPRISE B365
BIEBER SUPRISE 365Y

HXC CONQUEST 4405P
LSF WIDELOAD R5014 U8061
TBLC CHEYENNE 605
TBLC MISS TANK 678
LJC MISSION STATEMENT P27
GP FAITH 803
MESSMER PACKER S008
BIEBER SURPRISE 9827

ACT BW (RATIO) 83 (107)
WW RATIO 103
YW RATIO 101
WDA 3.22





15 TAC HOBO H40

REG 4392123
DOB 2/24/20
TATTOO H40

BASIN HOBO 79E
BASIN HOBO 0545
BASIN ERICA 330E

TAC A191
TAC MS PRINCESS ANNE F98 ET
LARSON PRINCESS ANN 054-409

BUF CRK HOBO 2595
DOUBLE FORK 079Z
BITTERROOT GOLD 25XA
BASIN ERICA 3380
LSF TAKEOVER 9943W
TBLC MISS 605 CHEYENNE 191
LORENZEN PRIME CUT 7102
LARSON PRINCESS ANN 409-211

ACT BW (RATIO)
71 (101)
WW RATIO
101
YW RATIO
100
WDA
2.87

CALVING EASE ★★★★★
DAM INFO AGE: 4 MPPA: 100 MATURE WT: 1280

PRO	S	HB	GM	CED	BW	WW	YW	MLK	ME	HP	CEM	ST	MB	YG	CW	REA	BF
113	74	39	15	-2.2	63	101	26	-1	9	8	18	0.39	0.15	30	0.05	0.03	
15%	12%	44%	18%	42%	39%	39%	46%	31%	78%	26%	13%	53%	91%	22%	66%	81%	

100% AR **ADJ IMF (RATIO)** 2.11 (68) **ADJ REA (RATIO)** 12.08 (92)

Basin Hobo did it again. A true cow maker that has been through the true test - TIME! Combines 191 and A236 on the bottom side with CE and performance. The puzzle just needs one more piece. You.

16 TAC DOUBLE BARREL H348

REG 4392149
DOB 3/23/20
TATTOO H348

RED BENCHMARK TRANSITION 10-14
3SCC DOUBLE BARREL E146
NSFR MTX C71

TAC SECURITY D56
TAC MS VERNA F67 ET
3SCC VERNA B47

LSF MEW GAME CHANGER 1613Y
RED BENCHMARK LANA 60'11
RED S00 LINE POWER EYE 161X
NSFR MTX W17
5L BLOCKADE 2218-30B
LAZJ MS BRIER 494-976
BIEBER HARD DRIVE Y120
3SCC VERNA U105

ACT BW (RATIO)
64 (92)
WW RATIO
100
YW RATIO
98
WDA
2.90

CALVING EASE ★★★★★
DAM INFO AGE: 4 MPPA: 100 MATURE WT: 1132

PRO	S	HB	GM	CED	BW	WW	YW	MLK	ME	HP	CEM	ST	MB	YG	CW	REA	BF
109	58	51	15	-3.3	62	96	26	4	10	8	16	0.60	0.11	33	0.06	0.01	
19%	38%	19%	15%	23%	40%	49%	40%	54%	66%	21%	41%	13%	74%	15%	64%	33%	

100% AR **ADJ IMF (RATIO)** 2.49 (80) **ADJ REA (RATIO)** 11.43 (87)

His dam is another maternal sibling to Drifter and lot 1. Have several different combinations as you flip through the catalog and any one of them could feature the sale. He is one of the best structured bulls of the entire offering, hitting his track with every step. Double Barrel is an out-cross heifer bull that really stamps them with a great phenotype.



3SCC DOUBLE BARREL E146 - SIRE OF LOTS 16-17



LOT 17



LOT 19

17 TAC DOUBLE BARREL H281

REG 4392103
DOB 3/18/20
TATTOO H281
CALVING EASE ★★★★★

RED BENCHMARK TRANSITION 10-14
3SCC DOUBLE BARREL E146
NSFR MTX C71

5L BLOCKADE 2218-30B
TAC MS ABIGRACE F113 ET
TAC ABIGRACE C143-L7730 ET

LSF MEW GAME CHANGER 1613Y
RED BENCHMARK LANA 60'11
RED SOO LINE POWER EYE 161X
NSFR MTX W17
5L DEFENDER 560-30Z
5L OPAL 656-2218
BECKTON NEW ERA Y194
BROWN MS ABIGRACE L7730

ACT BW (RATIO)
65 (93)
WW RATIO
95
YW RATIO
95
WDA
2.79

DAM INFO AGE: 4 MPPA: 97

PRO	S	HB	GM	CED	BW	WW	YW	MLK	ME	HP	CEM	ST	MB	YG	CW	REA	BF
73	24	49	16	-3.0	57	92	20	5	11	7	12	0.55	0.01	29	0.18	0.00	
76%	94%	23%	14%	27%	60%	59%	91%	65%	51%	54%	86%	20%	23%	25%	37%	9%	

100% AR **ADJ IMF (RATIO)** 4.55 (147) **ADJ REA (RATIO)** 11.75 (90)

Same look and design of lot 16 backed by an equally impressive dam. The Abigrace females are some of our very best mothers. L7730 is no stranger to the breed being the first million dollar valued Red Angus female.

19 TAC ROLLIN DEEP H110

REG 4392065
DOB 3/1/20
TATTOO H110
CALVING EASE ★★

BIEBER ROOSEVELT W384
BIEBER ROLLIN DEEP Y118
BIEBER TILLY 399W

RCC EVA'S CANYON M206
HATS JACKIE 7R11
HATS JACKIE 4R2

BIEBER ROUGH RIDER 10712
BIEBER SHEBA 9602
BIEBER BOONE 8000
BIEBER TILLY 303S
BFCK CHEROKEE CNYN 4912
PELTONS MISS EVA 0143K
PINE RIDGE 01-95/1R29
HATS JACKIE 1R4

ACT BW (RATIO)
73 (96)
WW RATIO
99
YW RATIO
98
WDA
3.00

DAM INFO AGE: 15 MPPA: 101 MATURE WT: 1260

PRO	S	HB	GM	CED	BW	WW	YW	MLK	ME	HP	CEM	ST	MB	YG	CW	REA	BF
67	54	12	11	-1.6	56	83	26	7	12	7	16	0.35	0.08	17	0.19	0.04	
84%	46%	93%	76%	54%	65%	76%	46%	76%	24%	54%	41%	64%	57%	70%	34%	91%	

93.8% AR 6.2% XX **ADJ IMF (RATIO)** 2.14 (69) **ADJ REA (RATIO)** 12.88 (98)

His dam turned 15 this week and don't remember a year she wasn't AI bred. There is true value in longevity in the cowherd, which is a trait that is undoubtedly undervalued. Rollin Deep was a great match for her. Lot 19 has been one of the favorites all year.



TAC BLOCKADE E66 - SIRE OF LOTS 18

18 TAC BLOCKADE H15

REG 4392109
DOB 2/20/20
TATTOO H15
CALVING EASE ★★★★★

5L BLOCKADE 2218-30B
TAC BLOCKADE E66
3SCC VERNA B47

3SCC HOB0 X05
TAC PHOEBE A97
3SCC PHOEBE W133

5L DEFENDER 560-30Z
5L OPAL 656-2218
BIEBER HARD DRIVE Y120
3SCC VERNA U105
BASIN HOB0 0545
3SCC CLASSY U211
HAMMEL ROMEO 212T-ET
3SCC PHOEBE S327

ACT BW (RATIO)
71 (92)
WW RATIO
88
YW RATIO
87
WDA
2.69

DAM INFO AGE: 9 MPPA: 101 MATURE WT: 1254

PRO	S	HB	GM	CED	BW	WW	YW	MLK	ME	HP	CEM	ST	MB	YG	CW	REA	BF
103	49	54	16	-4.1	46	71	25	-2	9	8	16	0.62	0.07	26	0.08	0.01	
26%	56%	15%	10%	13%	90%	90%	51%	26%	89%	32%	48%	11%	53%	34%	59%	29%	

100% AR **ADJ IMF (RATIO)** 3.70 (119) **ADJ REA (RATIO)** 10.22 (78)

An E66 son that throws a different twist on things than normal. Heifer bull deluxe backed by nine-year old Basin Hobo granddaughter.

20 TAC MOVIN DEEPER H532

REG 4392133
DOB 4/24/20
TATTOO H532
CALVING EASE ★★

BIEBER ROLLIN DEEP Y118
TAC MOVIN DEEPER D178
VF TAMARA A196-545

3SCC LANCER W207
3SCC SIERRA A65
3SCC SIERRA W195

BIEBER ROOSEVELT W384
BIEBER TILLY 399W
LARSON MASTERPIECE 009
LARSON TAMARA 545-556
HAMMEL LANCER 41P
UBAR COPPERQUEEN 506
3SCC ZEUS T70
3SCC SIERRA T82

ACT BW (RATIO)
96 (124)
WW RATIO
106
YW RATIO
96
WDA
3.18

DAM INFO AGE: 9 MPPA: 103 MATURE WT: 1200

PRO	S	HB	GM	CED	BW	WW	YW	MLK	ME	HP	CEM	ST	MB	YG	CW	REA	BF
67	51	16	8	1.4	62	94	32	12	12	4	18	0.24	0.01	23	0.36	0.03	
84%	54%	89%	95%	95%	42%	54%	5%	93%	36%	93%	18%	90%	21%	48%	10%	69%	

100% AR **ADJ IMF (RATIO)** 2.03 (66) **ADJ REA (RATIO)** 13.15 (101)

Out of a nine-year-old Lancer daughter that has put several daughters back into the program. The Movin Deeper cattle have lots of shape and natural thickness.

21 TAC MOVIN DEEPER H326

REG 4392077
DOB 3/22/20
TATTOO H326
CALVING EASE ★★★★★

BIEBER ROLLIN DEEP Y118
TAC MOVIN DEEPER D178
VF TAMARA A196-545

TAC GAINER A207
TAC C388-Y170
TBLC MISS TANK 170

BIEBER ROOSEVELT W384
BIEBER TILLY 399W
LARSON MASTERPIECE 009
LARSON TAMARA 545-556
BIEBER ROLLIN DEEP Y118
BIEBER RED BEVERLY 207W
CRSA 6X
3R MS COLT 204G 160L

ACT BW (RATIO)
64 (84)
WW RATIO
87
YW RATIO
91
WDA
2.85

DAM INFO AGE: 7 MPPA: 102 MATURE WT: 1280

PRO	S	HB	GM	CED	BW	WW	YW	MLK	ME	HP	CEM	ST	MB	YG	CW	REA	BF
91	74	17	13	-2.1	51	81	30	3	12	8	18	0.37	0.13	16	0.00	0.04	
45%	13%	88%	49%	43%	79%	80%	11%	47%	38%	29%	13%	60%	85%	76%	77%	91%	

100% AR **ADJ IMF (RATIO)** 3.44 (124) **ADJ REA (RATIO)** 11.12 (82)

Movin Deeper heifer bull out of a cow that puts one in the sale year after year.



LOT 23



LOT 22

23 TAC PAYWEIGHT H477

REG 4392175	BASIN PAYWEIGHT 1682 CONNEALY 1682 3657 POLLETTA OF CONANGA 3657	BASIN PAYWEIGHT 006S 21AR O LASS 7017 CONNEALY CONFIDENCE 0100 POLLY OF CONANGA 721 5L DEFENDER 560-30Z 5L OPAL 656-2218 TAC CONQUEST A115 TAC GROUND SOW A112	ACT BW (RATIO) 55 (75)
DOB 4/8/20	5L BLOCKADE 2218-30B TAC GROUND SOW E38 TAC GROUND SOW C100-A112		WW RATIO 81
TATTOO H477			YW RATIO 95
CALVING EASE ★★★★	DAM INFO AGE: 5 MPPA: 92 MATURE WT: 1130		WDA 2.94
PRO S HB GM CED BW WW YW MLK ME HP CEM ST MB YG CW REA BF	101 41 60 17 -4.5 63 107 19 4 10 9 13 0.64 0.26 40 -0.07 0.04		
30% 73% 9% 6% 9% 36% 26% 95% 57% 66% 10% 77% 9% 99% 5% 88% 92%			

100% AR ADJ IMF (RATIO) 5.11 (165) ADJ REA (RATIO) 11.49 (88)

Black heifer bull prospect that is wide based at the ground stacking several great cow makers in his pedigree. His sire is a true cow maker with Payweight 1682 and Connealy Confidence 0100. The 0100 line are some of the best maternal oriented mommas in the breed. The set of females he leaves behind will be hard to put a price on.

22 TAC STEIGER H284

REG 4565595	GP WALLACE 016 TAC STEIGER F155 ET TBLC MISS 605 CHEYENNE 191	LJC MISSION STATEMENT P27 GP FAITH 803 TBLC CHEYENNE 605 TBLC MISS TANK 678 HXC JACKHAMMER 8800U BECKTON ANGEL L845 WR 3SCC ZEPPLIN S99 3SCC MAGGIE S322	ACT BW 56
DOB 3/18/20	SDCC JACKHAMMER 734Y TAC MAGGIE A172 3SCC MAGGIE W172		
TATTOO H284			
CALVING EASE ★★★★	DAM INFO AGE: 9 MPPA: 97 MATURE WT: 1530		
PRO S HB GM CED BW WW YW MLK ME HP CEM ST MB YG CW REA BF	88 54 34 10 -0.9 67 106 21 6 10 5 17 0.41 0.06 26 0.17 0.02		
51% 46% 57% 86% 67% 24% 28% 87% 68% 76% 81% 25% 48% 46% 35% 38% 47%			

100% AR ACT IMF 2.55 ACT REA 12.9

If you're looking for one with extra shape and dimension, lot 22 is your guy. Not going to make one much stouter than the Steigers.

24 TAC EXCELLENCY H64

REG 4392159	N BAR EMULATION EXT SINCLAIR EXCELLENCY 5X25 IDEAL 4465 OF 6807 4286	EMULATION N BAR 5522 N BAR PRIMROSE 2424 D H D TRAVELER 6807 E E 4286 OF IDEAL 2240 1254 5L BLOCKADE 2218-30B RIDGE AQUILA 836-456 BLACK BRYLOR KODIAK 204Y 3SCC HANNAH Z100	ACT BW (RATIO) 60 (88)
DOB 2/27/20	TAC ENCLOSURE D169 TAC MS HANNAH F522 3SCC HANNAH B04		WW RATIO 90
TATTOO H64			YW RATIO 100
CALVING EASE ★★★★	DAM INFO AGE: 4 MPPA: 96 MATURE WT: 1088		WDA 2.84
PRO S HB GM CED BW WW YW MLK ME HP CEM ST MB YG CW REA BF	107 49 58 16 -2.9 61 101 17 3 13 7 15 0.43 0.26 50 -0.05 0.03		
22% 57% 11% 14% 29% 47% 40% 98% 48% 18% 55% 60% 43% 99% 1% 86% 72%			

100% AR ADJ IMF (RATIO) 3.68 (119) ADJ REA (RATIO) 10.43 (80)

Sleep all night heifer bull that has awesome length of body and an abundance of lower quarter. Excellency is still a leader in the breed for tenderness and leaves a great set of females with Ideal 4465 in his pedigree.

TWO-YEAR-OLD Black Angus Bulls



LOT 25

25 TAC PAYWEIGHT H199

<p>REG 20302635</p> <p>DOB 03/07/20</p> <p>TATTOO H199</p> <p>CALVING EASE ★★★★</p>	<p>Basin Payweight 1682 Basin Payweight Plus 6048 EXAR Royal Lass 2810</p> <p>Tac Cold Cash D179 Tac Zara F192-X071 BSAR Zara 071X</p>	<p>Basin Payweight 006S 21AR O Lass 7017 Connealy Consensus 7229 Exar Royal Lass 1067 Barstow Cash O C C Juanada 603R Bsar United 210T Bear Mtn Zara 8071</p>	<p>ACT BW (RATIO) 74 (100)</p>
--	--	---	--

DAM INFO AGE: 4 MATURE WT: 1150															
CED	BW	WW	YW	MLK	SEN	CW	MB	RE	FAT	\$M	\$W	\$F	\$G	\$B	\$C
13	-1.6	61	111	31	-14				81	69	86				
10%	5%	45%	40%	15%	45%				10%	30%	50%				

100% ANGUS **ACT IMF** 2.78 **ACT REA** 12.1

Payweight Plus son going back to OCC Juanada 603R. She is remembered around here for the calf vigor that she brought to the table. You had to be quick with the calf cart after birth, otherwise catching them to get a weight and tag was dang near impossible.

26 TAC H399

<p>REG NA</p> <p>DOB</p> <p>TATTOO H399</p> <p>CALVING EASE ★★★★</p>	<p>BASIN PAYWEIGHT 1682 CONNEALY 1682 3657 POLLETTA OF CONANGA 3657</p> <p>MULTI SIRE GROUP (TK ANGUS) TAC MADGE C200 TK MADGE RJM T154</p>	<p>BASIN PAYWEIGHT 006S 21AR O LASS 7017 CONNEALY CONFIDENCE 0100 POLLY OF CONANGA 721</p>	<p>ACT BW 65</p>
--	---	--	------------------------------------

DAM INFO AGE: 7 MATURE WT: 1672															
CED	BW	WW	YW	MLK	SEN	CW	MB	RE	FAT	\$M	\$W	\$F	\$G	\$B	\$C

100% ANGUS **ACT IMF** 3.37 **ACT REA** 14.4

Another 1538 out a TK Angus cow we purchased. He is a purebred, but sells as commercial. Heifer bull candidate.



TWO-YEAR-OLD Sim Angus Bulls

ATA CATTLE



LOT 27



LOT 28



CDI PERSPECTIVE 238A - SIRE OF LOT 28

Find us on: facebook

TACATTLE.COM

27 TAC ARMOUR H29

REG 4021939
DOB 2/22/20
TATTOO H29
CALVING EASE ★★

MC CUMBER TITANIUM 5005	MC CUMBER TITANIUM 3127	ACT BW
MC CUMBER ARMOUR 7148	MISS WIX 7126 OF MC CUMBER	57
MISS WIX 2003 OF MC CUMBER	O C C TREMENDOUS 619T	
FLYING V TRANSFORMER	MISS WIX 2022 HC MC CUMBER	
TAC MS GUNNER F195-W636	V A R GENERATION 2100	
MLC MS GUNNER W636	FLYING V MISS PRIDE 95Z	
	TNT GUNNER N208	
	SSR MISS LEGACY R38	

DAM INFO AGE: 4 MATURE WT: 1275

CE	BW	WW	YW	MCE	MLK	MWW	ST	DOC	CW	YG	MB	BF	RE	SAPI	STI
12.3	0.7	74.0	114.0	6.2	20.9	62.0	14.6	11.5	43.7	-0.05	0.38	-0.018	0.47	127.7	75.0
50%	60%	60%	55%	65%	70%	45%	55%	60%	15%	95%	40%	85%	85%	55%	65%

1/4 SM 3/4 AN ACT IMF (RATIO) 2.66 ACT REA 11.5

BLACK. Leading the Simmental division is one heck of a bull. Has the look, power, and rib to be a bull your neighbor's envy. True cow maker.

28 TAC PERSPECTIVE H150

REG 3861379
DOB 3/4/20
TATTOO H150
CALVING EASE ★★

HOOK'S EXPECTATION 36X	GW PREDESTINED 701T	ACT BW (RATIO)
CDI PERSPECTIVE 238A	HOOKS MIKA 141M	80 (99)
CDI MS TRUMP 101Y	NF TRUMP S582	WW RATIO
MR HOC BROKER	CDI MS TOP GUN 5U	97
TAC MS BROKER E2	SVF STEEL FORCE S701	YW RATIO
TAC MS 1086	JM BF H25	101

DAM INFO AGE: 5 MATURE WT: 1596

CE	BW	WW	YW	MCE	MLK	MWW	ST	DOC	CW	YG	MB	BF	RE	SAPI	STI
12.5	-0.2	75.0	113.1	6.0	21.6	59.0	13.8	6.7	25.3	-0.23	0.20	-0.050	0.55	122.9	75.5
50%	40%	55%	60%	65%	65%	60%	65%	95%	75%	55%	75%	50%	70%	65%	65%

3/4 SM 1/4 AN ACT IMF (RATIO) 2.67 (105) ACT REA (RATIO) 14.8 (105)

BLACK. Half brother sells as lot 79. It is hard to make one this powered up and still be as soft and deep flanked as this one. E2 has put one in the sale every year. She just needs to have a few heifers for us and we will be set.





TAC SURETY F223 - SIRE OF LOTS 30-32



LOT 32

30 TAC SURETY H401

REG 3861373
DOB 3/28/20
TATTOO H401
CALVING EASE ★★★★★

TAC SECURITY D56
TAC SURETY F223
TAC AQUILA C308-456
HOOK'S XAVIER 14X
UC CROCUS C230 BLK
UC CROCUS X017 BLK

5L BLOCKADE 2218-30B
LAZYJ MS BRIER 494-976
GP WALLACE 016
RIDGE AQUILA 836-456
MCC DAYBREAK
HOOKS PATTI 3P
ELLINGSON LEGACY M229
U266

ACT BW (RATIO) 62 (74)
WW RATIO 90
YW RATIO 88

DAM INFO AGE: 7 MATURE WT: 1320

CE	BW	WW	YW	MCE	MLK	MWW	ST	DOC	CW	YG	MB	BF	RE	SAPI	STI
16.3	-4.9	53.5	77.8	8.8	23.1	49.8	15.2	12	15.4	-0.19	0.30	-0.024	0.50	131.7	69.5
10%	2%	99%	99%	20%	50%	95%	50%	55%	95%	65%	55%	75%	80%	50%	85%

1/4 SM 1/2 AR 3/16 AN 1/16 CS ACT IMF (RATIO) 2.52 (101) ACT REA (RATIO) 13.0 (95)

BLACK. Simmental heifer bull prospect.

32 TAC SURETY H251

REG 3861383
DOB 3/14/20
TATTOO H251
CALVING EASE ★★

TAC SECURITY D56
TAC SURETY F223
TAC AQUILA C308-456
MR CCF 20-20
TAC SHEZA MOVIN E170
TAC SHEZA MOVIN A130

5L BLOCKADE 2218-30B
LAZYJ MS BRIER 494-976
GP WALLACE 016
RIDGE AQUILA 836-456
MR CCF VISION
HTP SVF DEW THE STROKE
LMF MOVIN FORWARD
THSF SHEZA DREAM S623

ACT BW (RATIO) 78 (97)
WW RATIO 91
YW RATIO 94

DAM INFO AGE: 5 MATURE WT: 1200

CE	BW	WW	YW	MCE	MLK	MWW	ST	DOC	CW	YG	MB	BF	RE	SAPI	STI
12.6	-1.4	61.9	89.2	5.9	18.5	49.4	16.4	12.3	20.7	-0.20	0.10	-0.046	0.41	119.0	65.9
50%	20%	95%	95%	70%	85%	95%	35%	50%	85%	60%	90%	50%	90%	75%	95%

1/2 SM 1/2 AR ACT IMF (RATIO) 1.95 (77) ACT REA (RATIO) 11.7 (84)

RED. The 20-20 cattle are in high demand and for good reason, they work. Backed by Sheza Movin and Aquilla 456. Long bodied and excellent footed.



LOT 31

33 TAC UNO MAS H58

REG 3861384
DOB 2/26/20
TATTOO H58
CALVING EASE ★★★

WLE UNO MAS X549
HPF UNO MAS 4D
TYLERTOWN MELTED
RYMO MR REDCOAT R33Y
TAC RED COAT F165-B6
TAC MS REDEMPTION B6

CNS DREAM ON L186
SHAWNEE MISS 770P
W/C WIDE TRACK 694Y
FBFS YOU MELT ME 128Y
GW RED COAT 099TS
RYMO MISS T2 333N

ACT BW (RATIO) 72 (93)
WW RATIO 94
YW RATIO 100

DAM INFO AGE: 4 MATURE WT: 1100

CE	BW	WW	YW	MCE	MLK	MWW	ST	DOC	CW	YG	MB	BF	RE	SAPI	STI
13.8	-1.9	57.6	86.2	6.9	20.5	49.2	12.4	11.8	12.9	-0.40	0.14	-0.091	0.59	116.0	66.6
35%	15%	99%	99%	50%	75%	95%	80%	55%	99%	10%	85%	4%	65%	80%	95%

3/4 SM 1/4 AR ACT IMF (RATIO) 2.64 (103) ACT REA (RATIO) 14.3 (101)

RED. The Uno Mas females are great cows for us. They are 1300 lb mature cows that milk heavy, hold condition, and breed back on time. Let him loose on a set of heifers or cows and keep every female.

31 TAC SURETY H463

REG 3861397
DOB 4/6/20
TATTOO H463
CALVING EASE ★★★★★

TAC SECURITY D56
TAC SURETY F223
TAC AQUILA C308-456
WS A STEP UP X27
ROCHE LE821
LE EVER READY Y-932

5L BLOCKADE 2218-30B
LAZYJ MS BRIER 494-976
GP WALLACE 016
RIDGE AQUILA 836-456
SS EBONY'S GRANDMASTER
WS MS MACHO U38
TNT EVER READY R232
LE GOLD TWISTER W-425

ACT BW (RATIO) 63 (74)
WW RATIO 94
YW RATIO 89

DAM INFO AGE: 9 MATURE WT: 1550

CE	BW	WW	YW	MCE	MLK	MWW	ST	DOC	CW	YG	MB	BF	RE	SAPI	STI
15.8	-4.4	54.4	72.5	6.7	24.6	51.8	15.2	11.4	11.9	-0.30	0.12	-0.060	0.50	123.9	66.6
15%	3%	99%	99%	55%	35%	90%	50%	60%	99%	30%	90%	35%	80%	65%	95%

1/2 SM 1/2 AR ACT IMF (RATIO) 1.90 (77) ACT REA (RATIO) 11.9 (89)

RED. Heifer bull candidate backed by an impressive baldy Step Up cow. He may make those red baldy females that everyone loves.





HOOKS XPECTATION 36X - SIRE OF LOT 34



FF PEARL SNAP 770 - SIRE OF LOTS 36-37

Don't miss these Pearl Snap two-year olds that will leave behind a great set of feeder steers or replacements.

34 TAC XPECTATION H179

REG 3861855
DOB 3/2/20
TATTOO H179
CALVING EASE ★★

GW PREDESTINED 701T
HOOK'S XPECTATION 36X
HOOKS MIKA 141M

SFG SANTA FE C558
TAC MS BEYOND F270-384A
KGH MISS BEYOND 384A

G A R PREDESTINED
GW MISS LUCKY STRIKE 363
HOOKS SHEAR FORCE 38K
HOOKS IRISH MAXINE 29K
CCR SANTA FE 9349Z
SFG MAGGIE Y27
GCF BEYOND
KGH 600 911J

ACT BW (RATIO)
72 (98)
WW RATIO
94
YW RATIO
93

DAM INFO AGE: 4 MATURE WT: 1250

CE	BW	WW	YW	MCE	MLK	MWW	ST	DOC	CW	YG	MB	BF	RE	SAPI	STI
11.6	-0.2	69.5	97.1	5.5	27.4	62.1	21.1	13.7	21.7	-0.38	0.20	-0.079	0.73	144.6	77.4
40%	20%	85%	90%	55%	25%	50%	5%	25%	80%	75%	30%	75%	85%	25%	55%

PB SM **ACT IMF (RATIO)** 1.15 (62) **ACT REA (RATIO)** 12.6 (90)

RED. Maternal granddam is a 600U milking machine. Have several daughters and granddaughters retained in herd. Throw Xpection and Santa Fe in there and don't know how you could go wrong.

36 TAC PEARL SNAP H156

REG 4398105
DOB 3/4/20
TATTOO H156
CALVING EASE ★★

LT RUSHMOHRE 8060 PLD
FF PEARL SNAP 770
BUTLER MS TURTON

TAC ENCLOSURE D169
TAC TAMARA F180
TAC MS TAMARA D189

LT RIO BRAVO 3181P
LT BRENDA'S EASE 3055PLD
TR PZC MR TURTON 0794 ET
M&M MS STEALTH 0102
5L BLOCKADE 2218-30B
RIDGE AQUILA 836-456
BIEBER ROLLIN DEEP Y118
VF TAMARA A196-545

ACT BW (RATIO)
73 (105)
WW RATIO
104
YW RATIO
106
WDA
3.16

DAM INFO AGE: 4 MPPA: 103 MATURE WT: 1134

PRO	S	HB	GM	CED	BW	WW	YW	MLK	ME	HP	CEM	ST	MB	YG	CW	REA	BF
26	12	14	13	0.6	70	99	25	-4	10	3	10	0.04	-0.28	30	0.74	-0.05	
99%	98%	92%	48%	89%	16%	44%	49%	20%	69%	98%	94%	99%	1%	22%	1%	1%	

50% AR 50% CH **ACT IMF (RATIO)** 2.03 (79) **ACT REA (RATIO)** 13.33 (99)

35 TAC UNO MAS H475

REG 3861396
DOB 4/8/20
TATTOO H475
CALVING EASE ★★

WLE UNO MAS X549
HPF UNO MAS 4D
TYLERTOWN MELTED

COMMERCIAL RED ANGUS
X461
COMMERCIAL RED ANGUS

CNS DREAM ON L186
SHAWNEE MISS 770P
W/C WIDE TRACK 694Y
FBFS YOU MELT ME 128Y

ACT BW (RATIO)
91 (108)
WW RATIO
95
YW RATIO
91

DAM INFO AGE: 9 MATURE WT:

CE	BW	WW	YW	MCE	MLK	MWW	ST	DOC	CW	YG	MB	BF	RE	SAPI	STI
10.6	0.7	56.4	78.0	4.4	23.3	51.5	9.4	12.3	7.2	-0.26	0.10	-0.072	0.23	95.9	60.2
75%	60%	99%	99%	90%	50%	90%	95%	50%	99%	45%	90%	15%	99%	99%	99%

1/2 SM 1/2 AR **ACT IMF (RATIO)** 1.94 (79) **ACT REA (RATIO)** 11.7 (87)

RED. Red cow bull that will widen them up and fix them at the ground. Power bull.



LOT 37

37 TAC PEARL SNAP H213

REG 4570797
DOB 3/9/20
TATTOO H213
CALVING EASE ★★

LT RUSHMOHRE 8060 PLD
FF PEARL SNAP 770
BUTLER MS TURTON

BADLANDS NET WORTH 23U
3SCC BRANDY Y45
3SCC BRANDY S168

LT RIO BRAVO 3181P
LT BRENDA'S EASE 3055PLD
TR PZC MR TURTON 0794 ET
M&M MS STEALTH 0102
PFFR SHAQ 607
BADLANDS MEDORA 406
K F BANDOLIER 814
RRM MISS BASIN 0545 4008

ACT BW
89
WDA
3.16

DAM INFO AGE: 12 MPPA: 97

PRO	S	HB	GM	CED	BW	WW	YW	MLK	ME	HP	CEM	ST	MB	YG	CW	REA	BF
58	45	13	10	2.8	68	87	20	-13	11	3	13	0.22	-0.33	15	0.64	-0.06	
92%	67%	92%	86%	99%	20%	69%	90%	7%	44%	98%	77%	92%	1%	78%	1%	1%	

50% AR 50% CH **ACT IMF** 2.63 **ACT REA (RATIO)** 14.0



18-MONTH OLD Red Angus Bulls



ATA CATTLE

38 TAC BRICK HOUSE H721

REG 4565601
DOB 8/29/20
TATTOO H721
CALVING EASE ★★

BASIN PAYWEIGHT 1682
CONNEALY 1682 3657
POLLETTA OF CONANGA 3657

5L BLOCKADE 2218-30B
TAC VERNA E23
3SCC VERNA B47

BASIN PAYWEIGHT 006S
21AR O LASS 7017
CONNEALY CONFIDENCE 0100
POLLY OF CONANGA 721
5L DEFENDER 560-30Z
5L OPAL 656-2218
BIEBER HARD DRIVE Y120
3SCC VERNA U105

ACT BW (RATIO) 65 (86)
WW RATIO 97
YW RATIO 99
WDA 2.73

DAM INFO AGE: 5 MPPA: 99 MATURE WT: 1245

PRO	S	HB	GM	CED	BW	WW	YW	MLK	ME	HP	CEM	ST	MB	YG	CW	REA	BF
89	33	56	16	-3.4	67	108	20	6	10	8	12	0.55	0.08	41	0.32	0.02	
50%	85%	13%	10%	21%	25%	25%	90%	69%	66%	21%	83%	20%	60%	4%	13%	54%	

100% AR ADJ IMF (RATIO) 2.81 (0) ADJ REA (RATIO) 12.41 (0)

Here is a bull that is as stout and sound as they get. He has dual purpose written all over him. As you look through his pedigree you will find Verna, O100, Payweight, and Blockade. He is a true herd bull that is very balanced in all traits. Red carrier.



39 TAC HEAVY WEIGHT H742

REG 4565603
DOB 9/6/20
TATTOO H742
CALVING EASE ★★

BASIN PAYWEIGHT 1682
CONNEALY 1682 3657
POLLETTA OF CONANGA 3657

TAC WALLACE B112
TAC MS CASIE D434
TAC CASIE A21-21S

BASIN PAYWEIGHT 006S
21AR O LASS 7017
CONNEALY CONFIDENCE 0100
POLLY OF CONANGA 721
GP WALLACE 016
3SCC BRANDY Y112
3SCC HOBO X05
HR CASIE 21S

ACT BW (RATIO) 88 (115)
WW RATIO 110
YW RATIO 110
WDA 3.06

DAM INFO AGE: 6 MPPA: 100 MATURE WT: 1645

PRO	S	HB	GM	CED	BW	WW	YW	MLK	ME	HP	CEM	ST	MB	YG	CW	REA	BF
74	49	25	11	-0.1	66	106	20	3	9	7	15	0.25	0.13	29	0.08	0.03	
76%	58%	76%	75%	81%	25%	27%	89%	50%	78%	44%	58%	88%	85%	27%	59%	76%	

100% AR ADJ IMF (RATIO) 3.52 (0) ADJ REA (RATIO) 15.34 (0)

Performance at its finest. These two haven't skipped a beat from day one. Payweight 1583 has brought us a super set of calves to date, and we are excited to turn them red. The fall calves had a pink eye bug run through them on stalks last winter as calves. Lot 38 does have a speck of frost in his eye but can see just fine.

40 TAC PAYDAY H737

REG 4565597
DOB 9/6/20
TATTOO H737
CALVING EASE ★★

BASIN PAYWEIGHT 1682
CONNEALY 1682 3657
POLLETTA OF CONANGA 3657

BIEBER ROLLIN DEEP Y118
TAC TAMARA D166
VF TAMARA A196-545

BASIN PAYWEIGHT 006S
21AR O LASS 7017
CONNEALY CONFIDENCE 0100
POLLY OF CONANGA 721
BIEBER ROOSEVELT W384
BIEBER TILLY 399W
LARSON MASTERPIECE 009
LARSON TAMARA 545-556

ACT BW (RATIO) 85 (111)
WW RATIO 107
YW RATIO 108
WDA 3.01

DAM INFO AGE: 6 MPPA: 104 MATURE WT: 1670

PRO	S	HB	GM	CED	BW	WW	YW	MLK	ME	HP	CEM	ST	MB	YG	CW	REA	BF
70	34	36	12	-0.6	71	115	27	9	12	7	12	0.41	0.19	34	0.13	0.05	
81%	85%	51%	58%	73%	13%	13%	30%	85%	32%	39%	84%	48%	97%	12%	47%	97%	

100% AR ADJ IMF (RATIO) 4.97 (0) ADJ REA (RATIO) 11.84 (0)

41 TAC FRED H738

REG 4567129
DOB 9/6/20
TATTOO H738
CALVING EASE ★★

SPUR GROUND POUNDER Y114
TAC FRED A25
2RJL SIERRA Y725

NORTHERN IMPROVEMENT 4480 GF
TAC MS JUANADA D371
O C C JUANADA 603R

BECKTON NEBULA P P707
BECKTON FIREFLY S504 LN
UBAR HIGH CAPACITY 224
3SCC SIERRA U316
TC STOCKMAN 365
BLACKCAP OF R R 5367
O C C GLORY 950G
O C C JUANADA 856F

ACT BW 78
WDA 2.48

DAM INFO AGE: 6 MPPA: MATURE WT: 1286

PRO	S	HB	GM	CED	BW	WW	YW	MLK	ME	HP	CEM	ST	MB	YG	CW	REA	BF
45	22	23	13	-2.0	57	83	22	-3	6	4	11	0.44	0.16	6	-0.14	0.01	
98%	95%	79%	50%	47%	60%	75%	81%	23%	98%	96%	92%	41%	92%	95%	95%	30%	

100% AR **ADJ IMF (RATIO)** 2.89 (0) **ADJ REA (RATIO)** 11.54 (0)

A heifer bull going back on a Northern Improvement Juanada dam. Feed yard or replacement pen - he checks both boxes.

42 TAC REBOURNE H775

REG 4567131
DOB 10/18/20
TATTOO H775
CALVING EASE ★★

5L BOURNE 117-48A
TAC REBOURNE F105 ET
SDCC MARIGOLD 501W

LANDMARK OBJECTIVE 351
D 351 DARCEY A3125
D 8193 DARCEY X0263

5L ADVANTAGE 3267-221Y
5L ROXIE 854-117
RED HILL B571 JULIAN 84S
BUF CRK MARIGOLD T132
RIVER HILLS OBJECTIVE T199
LANDMARK ENCHANTRESS 351
D 50 GOLD MINE U8193
D 6134 MISS DIVIDEND K0148

ACT BW 80
WDA 2.59

DAM INFO AGE: 9 MPPA: MATURE WT: 1600

PRO	S	HB	GM	CED	BW	WW	YW	MLK	ME	HP	CEM	ST	MB	YG	CW	REA	BF
-31	-47	16	12	-2.2	61	85	23	-2	7	2	0	0.36	0.00	3	0.13	0.02	
99%	99%	89%	53%	41%	47%	73%	74%	25%	96%	99%	99%	61%	18%	97%	47%	48%	

100% AR **ADJ IMF (RATIO)** 2.31 (0) **ADJ REA (RATIO)** 11.01 (0)

Rebourne son backed by the marbling phenom, Objective. Heifer bull.

43 TAC ROLLIN DOUGH H703

REG 4565599
DOB 9/3/20
TATTOO H703
CALVING EASE ★★

BIEBER ROOSEVELT W384
BIEBER ROLLIN DEEP Y118
BIEBER TILLY 399W

3SCC EXT W35
TAC CASIE 1R0-21S
HR CASIE 21S

BIEBER ROUGH RIDER 10712
BIEBER SHEBA 9602
BIEBER BOONE 8000
BIEBER TILLY 303S
BASIN EXT 1925
SRA MISS ARTIC 235
HR SPIKE 4R94
HR MY 21N

ACT BW (RATIO) 72 (94)
WW RATIO 92
YW RATIO 95
WDA 2.69

DAM INFO AGE: 12 MPPA: 92 MATURE WT: 1700

PRO	S	HB	GM	CED	BW	WW	YW	MLK	ME	HP	CEM	ST	MB	YG	CW	REA	BF
94	71	23	11	-2.2	55	87	21	4	12	8	18	0.31	0.16	25	0.19	0.06	
40%	16%	78%	76%	42%	69%	70%	88%	59%	30%	37%	15%	75%	93%	40%	34%	99%	

100% AR **ADJ IMF (RATIO)** 1.71 (0) **ADJ REA (RATIO)** 13.59 (0)

Rollin Deep cattle grow like weeds, have carcass, and make great cows. Bieber Tilly is one of the best in the breed for phenotype and functionality. His mother, Casie, is no stranger to our herd with 9 daughters in production while turning 11 this spring. Basin EXT was a true cow maker.

44 TAC REBOURNE H762

REG 4565607
DOB 10/20/20
TATTOO H762
CALVING EASE ★★

5L BOURNE 117-48A
TAC REBOURNE F105 ET
SDCC MARIGOLD 501W

TAC A191
TAC PRINCESS ANN E27
TAC PRINCESS ANN C77

5L ADVANTAGE 3267-221Y
5L ROXIE 854-117
RED HILL B571 JULIAN 84S
BUF CRK MARIGOLD T132
LSF TAKEOVER 9943W
TBLC MISS 605 CHEYENNE 191
REDHILL B571 JULIAN 1W
LARSON PRINCESS ANN 054-409

ACT BW (RATIO) 73 (97)
WW RATIO 101
YW RATIO 97
WDA 2.62

DAM INFO AGE: 5 MPPA: 101 MATURE WT: 1230

PRO	S	HB	GM	CED	BW	WW	YW	MLK	ME	HP	CEM	ST	MB	YG	CW	REA	BF
69	41	28	13	-2.6	66	102	29	0	13	5	13	0.43	0.06	17	0.21	0.04	
82%	74%	69%	48%	33%	25%	36%	19%	35%	18%	83%	79%	43%	47%	73%	30%	88%	

100% AR **ADJ IMF (RATIO)** 2.09 (0) **ADJ REA (RATIO)** 13.55 (0)

Heifer bull backed by Princess Anne and A191. Proven growth and calving ease here.

45 TAC UNCHARTED H708

REG NA
DOB 9/15/20
TATTOO H708
CALVING EASE ★★

CCC WC RESOURCE 417 P
WC UNCHARTED T328
WC BRENDA 4035 P

DCR MR SOLUTION W13
TAC MS C20

LT RUSHMORE 8060 PLD
WC CCC BLUE GIRL 1528 P
WC CAPITAL GAIN 2220 P ET
WC BRENDA 2005 P

ACT BW 76

DAM INFO AGE: MPPA: MATURE WT:

PRO	S	HB	GM	CED	BW	WW	YW	MLK	ME	HP	CEM	ST	MB	YG	CW	REA	BF

25% AR 75% CH **ACT IMF** 1.92 **ACT REA** 16.8

Mellow yellow bull here that will add frame and pounds. Sells as commercial.



46 TAC LOCKDOWN H700

REG 4021940
DOB 8/26/20
TATTOO H700
CALVING EASE ★★

REMINGTON LOCK N LOAD54U
W/C LOCK DOWN 206Z
G C F MISS NEW LEVELR206

BF STEEL FORCE JOY 235X
BF STEEL F JOY A316
5128

REMINGTON ON TARGET 2S
BAR15 MISS KNIGHT78E-51G
IRONWOOD NEW LEVEL
M A F EILEEN 0113
SVF STEEL FORCE S701
SS PDRIVE RHODA

ACT BW 76

DAM INFO AGE: 9 MATURE WT: 1670

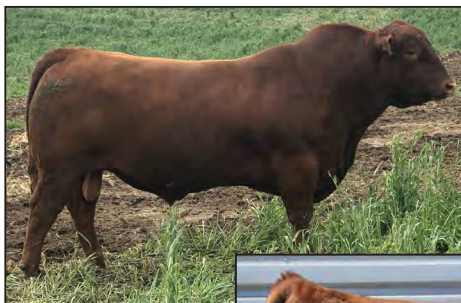
CE	BW	WW	YW	MCE	MLK	MWW	ST	DOC	CW	YG	MB	BF	RE	SAPI	STI
12.8	-0.3	71.9	113.3	6.8	22.9	58.8	9.6	9.9	37.3	-0.11	0.21	-0.025	0.52	116.1	73.1
45%	40%	65%	60%	50%	50%	60%	95%	80%	30%	85%	70%	75%	75%	80%	75%

1/2 SM 1/2 AN **ACT IMF (RATIO)** (0) **ACT REA (RATIO)** (0)

BLACK. Lock Down cattle just don't go out of style. The calving ease, growth, and style they possess is hard to fault. Fall aged bull will cover a big group of cows and pay for himself quickly.



YEARLING Red Angus Bulls



C-BAR LEVERAGE 8115F
SIRE OF LOTS 47-48



TAC DRIFTER H10 - MATERNAL BROTHER OF LOT 47

47 TAC CONSEQUENCE J383



REG
4565323
DOB
3/30/21
TATTOO
J383

SPUR FRANCHISE OF GARTON
C-BAR LEVERAGE 8115F
ADHM STONY 503C
TAC SECURITY D56
TAC MS VERNA F66 ET
3SCC VERNA B47

SPUR FRANCHISE 7070
H & H IRENE LASS 0135
LSF SAGA 1040Y
C-BAR MS STONY A302
5L BLOCKADE 2218-30B
LAZYJ MS BRIER 494-976
BIEBER HARD DRIVE Y120
3SCC VERNA U105

ACT BW (RATIO)	79 (107)
ADJ WW (RATIO)	786 (117)
ADJ YW (RATIO)	1229 (105)
WDA	3.26

CALVING EASE		★★★★		DAM INFO		AGE: 4	MPPA: 110	MATURE WT: 1262										
PRO	S	HB	GM	CED	BW	WW	YW	MLK	ME	HP	CEM	ST	MB	YG	CW	REA	BF	
121	58	63	15	-2.3	70	112	30	6	10	9	16	0.64	0.01	34	0.48	0.03		
9%	39%	7%	19%	40%	16%	17%	10%	69%	67%	14%	47%	9%	24%	12%	4%	69%		
100% AR								ADJ IMF (RATIO)	2.09 (78)	ADJ REA (RATIO)	15.24 (114)							

F66 did it again. Her first natural calf Drifter was our high seller last spring and now she has a Leverage that is just as exciting. The name Consequence fit perfectly. There are always tradeoffs in breeding cattle. Try to take traits that are important to your program and balance them in an attractive package. Well here is the consequence of those decisions.



LOT 48

48 TAC LEVERAGE J329

REG 4565313
DOB 3/22/21
TATTOO J329
CALVING EASE ★★

SPUR FRANCHISE OF GARTON
C-BAR LEVERAGE 8115F
ADHM STONY 503C

TAC WALLACE B112
TAC JUDY E448
3SCC JUDY Y360

SPUR FRANCHISE 7070
H & H IRENE LASS 0135
LSF SAGA 1040Y
C-BAR MS STONY A302
GP WALLACE 016
3SCC BRANDY Y112
BHR GOLDEN BOY 854
MISS PREMIUM J3560

ACT BW (RATIO)	72 (96)
ADJ WW (RATIO)	760 (114)
ADJ YW (RATIO)	1299 (111)
WDA	3.52

DAM INFO AGE: 5 MPPA: 108 MATURE WT: 1360

PRO	S	HB	GM	CED	BW	WW	YW	MLK	ME	HP	CEM	ST	MB	YG	CW	REA	BF
83	50	33	12	-1.2	69	111	30	9	9	7	16	0.29	-0.06	24	0.50	0.01	
60%	56%	58%	63%	62%	17%	19%	9%	84%	78%	48%	41%	80%	5%	46%	3%	45%	

100% AR ADJ IMF (RATIO) 2.31 (85) ADJ REA (RATIO) 15.31 (114)

Posted a 114 weaning ratio with a 111 yearling ratio. Impressive growth bull that is even more intriguing when you start looking at his carcass traits.



LOT 49

49 TAC QUARTERBACK J130

REG 4565245
DOB 3/2/21
TATTOO J130
CALVING EASE ★★

PIE STOCKMAN 4051
PIE QUARTERBACK 789
PIE RUBY 520

BROWN RED OAK A7639
TAC PRINCESS ANN D122
VF PRINCESS ANN A236-054

LSF SAGA 1040Y
PIE LAKOTA 046
PIE ONE OF A KIND 352
PIE RUBY 381
HUST CHIEF SEQUOYA R336
BROWN MS P707 Y7686
LJC MISSION STATEMENT P27
LARSON PRINCESS ANN 054-409

ACT BW (RATIO)	72 (94)
ADJ WW (RATIO)	722 (108)
ADJ YW (RATIO)	1225 (105)
WDA	3.33

DAM INFO AGE: 6 MPPA: 99 MATURE WT: 1380

PRO	S	HB	GM	CED	BW	WW	YW	MLK	ME	HP	CEM	ST	MB	YG	CW	REA	BF
117	60	57	15	-3.4	73	125	28	11	10	10	16	0.56	0.03	30	0.24	0.00	
11%	34%	11%	16%	21%	9%	5%	22%	90%	66%	4%	39%	18%	28%	22%	24%	23%	

100% AR ADJ IMF (RATIO) 3.46 (128) ADJ REA (RATIO) 13.89 (103)

Quarterback is creating quite the buzz in the breed. Commanding \$155,000 in Pieper's 2017 sale, his semen has been very limited the last few years. Take advantage of the performance and calving ease. The Princess Anne cow family is no stranger to making great ones. She is also the dam to Prospect C2 and Red Rock D113 who went to work for Sonstegard Red Angus.



LOT 50

50 TAC QUARTERBACK J127

REG 4565241
DOB 3/2/21
TATTOO J127
CALVING EASE ★★

PIE STOCKMAN 4051
PIE QUARTERBACK 789
PIE RUBY 520

BADLANDS OPPORTUNITY 53Y
LAZY MS BELITA 411-0025
JACOBSON FRONTLINE 0025

LSF SAGA 1040Y
PIE LAKOTA 046
PIE ONE OF A KIND 352
PIE RUBY 381
HXC JACKHAMMER 8800U
BADLANDS MEDORA 7S
5L NORSE DESIGN 673-5035
CBR MISS FRONTLINE 919-765

ACT BW (RATIO)	91 (119)
ADJ WW (RATIO)	707 (106)
ADJ YW (RATIO)	1310 (112)
WDA	3.60

DAM INFO AGE: 8 MPPA: 103 MATURE WT: 1656

PRO	S	HB	GM	CED	BW	WW	YW	MLK	ME	HP	CEM	ST	MB	YG	CW	REA	BF
103	49	54	13	-0.4	80	135	27	12	13	9	13	0.59	-0.01	29	0.38	0.01	
26%	57%	15%	39%	76%	2%	1%	35%	93%	19%	11%	74%	14%	14%	25%	8%	33%	

100% AR ADJ IMF (RATIO) 2.17 (80) ADJ REA (RATIO) 15.59 (116)



LOT 51

51 TAC SECURITY J58

REG 4565343
DOB 2/25/21
TATTOO J58
CALVING EASE ★★★★★

5L BLOCKADE 2218-30B
TAC SECURITY D56
LAZY MS BRIER 494-976

BIEBER HARD DRIVE Y120
3SCC VERNA B47
3SCC VERNA U105

5L DEFENDER 560-30Z
5L OPAL 656-2218
LSF RAB PERFORMANCE 2772Z
LAZY MISS WANETTE 976-122
LACY GOLD BAR 8123
BIEBER LAURA 158W
BASIN TREND SETTER 455S
3SCC VERNA S154

ACT BW	76
ADJ WW	705
ADJ YW	1110
WDA	3.03

DAM INFO AGE: 8 MPPA: 99

PRO	S	HB	GM	CED	BW	WW	YW	MLK	ME	HP	CEM	ST	MB	YG	CW	REA	BF
144	68	76	17	-4.6	62	99	25	3	11	10	17	0.84	0.08	43	0.32	0.02	
1%	21%	2%	6%	9%	40%	43%	47%	53%	48%	8%	31%	1%	60%	3%	13%	52%	

100% AR ADJ IMF (RATIO) 2.54 (102) ADJ REA (RATIO) 14.51 (103)

If you have been reading the comments, you will come to appreciate the opportunities this bull brings to the table. He has full sisters scattered throughout the catalog that mate well with anything you throw at them. Security was sold to 5L Red Angus a few years back and boy does he make elite momma cows. The Verna cow is the best Hard Drive female around. She has an exceptional set of feet and legs with a shoulder set to base a herd around. Half sib in blood to Drifter, lot 1, and several others.



LOT 52

52 TAC SECURITY J103

REG 4565231
DOB 2/28/21
TATTOO J103

5L BLOCKADE 2218-30B
TAC SECURITY D56
LAZYM MS BRIER 494-976

GP WALLACE 016
TAC FIREFLY C227
3SCC FIREFLY U112

5L DEFENDER 560-30Z
5L OPAL 656-2218
LSF RAB PERFORMANCE 2772Z
LAZYM MISS WANETTE 976-122
LJC MISSION STATEMENT P27
GP FAITH 803
3SCC HANNAH BIGPAY N304
3SCC FIREFLY R008

ACT BW (RATIO)	69 (90)
ADJ WW (RATIO)	710 (106)
ADJ YW (RATIO)	1271 (109)
WDA	3.48

CALVING EASE ★★★★★
DAM INFO AGE: 7 MPPA: 103 MATURE WT: 1352

PRO	S	HB	GM	CED	BW	WW	YW	MLK	ME	HP	CEM	ST	MB	YG	CW	REA	BF
131	83	48	17	-4.8	63	102	26	3	9	10	20	0.50	0.07	32	0.28	0.03	
4%	5%	25%	8%	7%	38%	37%	46%	47%	85%	4%	6%	28%	54%	17%	18%	69%	

100% AR ADJ IMF (RATIO) 3.71 (137) ADJ REA (RATIO) 14.26 (106)

J103 was the 11 smallest calf in his contemporary group ratioing 90. He then crushed the scale at yearling time being the 6th heaviest of 53 in his contemporary ratioing a 109. You have the best of both worlds.



LOT 53

53 TAC SECURITY J92

REG 4565361
DOB 2/28/21
TATTOO J92

5L BLOCKADE 2218-30B
TAC SECURITY D56
LAZYM MS BRIER 494-976

TAC FRED A25
TAC ANGELA C335
OLC ANGELA R435

5L DEFENDER 560-30Z
5L OPAL 656-2218
LSF RAB PERFORMANCE 2772Z
LAZYM MISS WANETTE 976-122
SPUR GROUND POUNDER Y114
2RJI SIERRA Y725
OLC KING ROB M185
OLC ANGELA H611

ACT BW (RATIO)	66 (86)
ADJ WW (RATIO)	648 (97)
ADJ YW (RATIO)	1120 (96)
WDA	3.06

CALVING EASE ★★★★★
DAM INFO AGE: 7 MPPA: 102 MATURE WT: 1278

PRO	S	HB	GM	CED	BW	WW	YW	MLK	ME	HP	CEM	ST	MB	YG	CW	REA	BF
112	77	35	18	-6.2	48	76	29	-2	11	11	17	0.54	0.09	16	0.01	0.02	
16%	10%	53%	3%	2%	86%	85%	16%	26%	50%	2%	22%	21%	65%	74%	75%	66%	

100% AR ADJ IMF (RATIO) 2.46 (91) ADJ REA (RATIO) 12.66 (94)

Maternal granddam to Shooter. Heifer bull that will make an exceptional set of females that stick around awhile. Balance, balance, and more balance.



TAC SECURITY D56 - SIRE OF LOTS 51-53



LOT 54

54 TAC PERFECT STORM J299

REG 4565303
DOB 3/18/21
TATTOO J299
CALVING EASE ★★★★★

DAM INFO AGE: 6 MPPA: 99 MATURE WT: 1275

PRO	S	HB	GM	CED	BW	WW	YW	MLK	ME	HP	CEM	ST	MB	YG	CW	REA	BF
99	50	48	16	-4.8	57	96	25	5	10	9	15	0.51	0.09	26	0.03	0.01	
33%	54%	24%	8%	7%	60%	50%	47%	66%	58%	17%	52%	26%	64%	36%	71%	35%	

100% AR ADJ IMF (RATIO) 3.27 (121) ADJ REA (RATIO) 11.74 (88)

Sure shot heifer bull out of a direct P707 daughter. Very solid, no holes kind and is a true cow maker.



LOT 55

55 TAC DOUBLE BARREL J322

REG 4565311
DOB 3/21/21
TATTOO J322
CALVING EASE ★★★★★

DAM INFO AGE: 5 MPPA: 108 MATURE WT: 1530

PRO	S	HB	GM	CED	BW	WW	YW	MLK	ME	HP	CEM	ST	MB	YG	CW	REA	BF
80	40	40	6	3.3	82	133	30	11	11	2	16	0.34	0.11	35	0.27	0.04	
64%	74%	41%	98%	99%	2%	2%	11%	90%	47%	98%	36%	67%	76%	10%	20%	85%	

100% AR ADJ IMF (RATIO) 2.34 (87) ADJ REA (RATIO) 13.59 (101)

He is the heaviest weaning ratioing a 118 (1 of 53), the 4th heaviest yearling, all while being the youngest bull of the offering.



LOT 56

56 TAC GREAT BASIN J94

REG 4565363
DOB 2/28/21
TATTOO J94
CALVING EASE ★★

DAM INFO AGE: 3 MPPA: 102 MATURE WT: 1166

PRO	S	HB	GM	CED	BW	WW	YW	MLK	ME	HP	CEM	ST	MB	YG	CW	REA	BF
71	26	44	8	0.9	66	101	26	-1	10	2	13	0.61	0.03	17	0.29	0.03	
80%	92%	31%	96%	92%	25%	38%	43%	30%	71%	98%	77%	12%	29%	71%	17%	83%	

100% AR ADJ IMF (RATIO) 2.91 (108) ADJ REA (RATIO) 16.36 (122)

These cattle are super good on their feet. You will truly not appreciate them until you see the daughters. You are welcome to come out and see the keeper heifers. He is definitely not the growth sire in the offering, but if your end goal is the female, look no further.

57 TAC GREAT BASIN J177

REG 4565271
DOB 3/5/21
TATTOO J177
CALVING EASE ★★★★★

DAM INFO AGE: 15 MPPA: 106 MATURE WT: 1488

PRO	S	HB	GM	CED	BW	WW	YW	MLK	ME	HP	CEM	ST	MB	YG	CW	REA	BF
107	76	31	14	-2.3	53	79	27	-6	11	6	18	0.54	0.06	13	0.22	0.05	
21%	11%	62%	33%	40%	74%	81%	28%	15%	46%	70%	13%	21%	49%	84%	28%	95%	

100% AR ADJ IMF (RATIO) 2.60 (96) ADJ REA (RATIO) 13.04 (97)

7385 is a no miss cow. Turned 15 this calving season with yet again another AI calf. Have 8 daughters in production. She is one of the main reasons we went back in using Basin Hobo. They are great mothers and are as fertile as they come. Time tested and trusted.



3SCC DOUBLE BARREL E146 - SIRE OF LOTS 16-17



BIEBER ROLLIN DEEP Y118 - SIRE OF LOTS 58-60

191 has a truly impressive track record. 14 daughters in production at 9 years of age. Also being the mother to our herd sire A191. These Rollin Deep bulls will sire early growth and performance.

59 TAC ROLLIN DEEP J129 ET

REG 4565243	BIEBER ROOSEVELT W384 BIEBER ROLLIN DEEP Y118 BIEBER TILLY 399W	BIEBER ROUGH RIDER 10712 BIEBER SHEBA 9602 BIEBER BOONE 8000 BIEBER TILLY 303S LCC CHEYENNE B221L TBLC FAYET410 CRSA 6X TBLC MS COLT 204G 23P	ACT BW 92													
DOB 3/2/21	TBLC CHEYENNE 605 TBLC MISS 605 CHEYENNE 191 TBLC MISS TANK 678		ADJ WW 756													
TATTOO J129			ADJ YW 1243													
CALVING EASE ★★			WDA 3.40													
DAM INFO AGE: 12 MPPA: 107																
PRO S	HB	GM	CED	BW	WW	YW	MLK	ME	HP	CEM	ST	MB	YG	CW	REA	BF
82	58	24	11	-1.3	70	110	28	9	11	7	16	0.40	0.18	28	0.13	0.06
62%	39%	78%	68%	60%	15%	21%	20%	85%	42%	39%	36%	51%	96%	28%	47%	99%
100% AR													ADJ IMF (RATIO)	2.70 (108)	ADJ REA (RATIO)	13.79 (98)

58 TAC ROLLIN DEEP J118

REG 4565239	BIEBER ROOSEVELT W384 BIEBER ROLLIN DEEP Y118 BIEBER TILLY 399W	BIEBER ROUGH RIDER 10712 BIEBER SHEBA 9602 BIEBER BOONE 8000 BIEBER TILLY 303S RED SSS OLY 554T VGW TM-DORA 0758 BASIN SALUTE R060 BASIN MISS 2910	ACT BW (RATIO) 78 (103)													
DOB 3/1/21	VGW OLY 903 BIEBER MISS 150Z BASIN MISS 8226		ADJ WW (RATIO) 749 (112)													
TATTOO J119			ADJ YW (RATIO) 1195 (102)													
CALVING EASE ★★			WDA 3.24													
DAM INFO AGE: 11 MPPA: 101 MATURE WT: 1276																
PRO S	HB	GM	CED	BW	WW	YW	MLK	ME	HP	CEM	ST	MB	YG	CW	REA	BF
96	55	41	12	-1.9	67	111	25	10	12	9	15	0.44	0.17	34	0.20	0.05
37%	46%	38%	54%	48%	25%	19%	47%	89%	25%	19%	52%	41%	94%	13%	32%	97%
100% AR													ADJ IMF (RATIO)	1.85 (69)	ADJ REA (RATIO)	13.77 (103)

150Z did it again. The cross with Rollin Deep seems to work so well, it's hard to stray from. Have sold several full sibs throughout the years. 150Z has never had a female, year after year she cranks out a top end bull. Keep waiting for one to replace her, but how can we be disappointed when she brings this quality to the table each year.

60 TAC ROLLIN DEEP J140 ET

REG 4565255	BIEBER ROOSEVELT W384 BIEBER ROLLIN DEEP Y118 BIEBER TILLY 399W	BIEBER ROUGH RIDER 10712 BIEBER SHEBA 9602 BIEBER BOONE 8000 BIEBER TILLY 303S LCC CHEYENNE B221L TBLC FAYET410 CRSA 6X TBLC MS COLT 204G 23P	ACT BW 86													
DOB 3/3/21	TBLC CHEYENNE 605 TBLC MISS 605 CHEYENNE 191 TBLC MISS TANK 678		ADJ WW 745													
TATTOO J140			ADJ YW 1234													
CALVING EASE ★★			WDA 3.37													
DAM INFO AGE: 12 MPPA: 107																
PRO S	HB	GM	CED	BW	WW	YW	MLK	ME	HP	CEM	ST	MB	YG	CW	REA	BF
82	58	24	11	-1.3	70	110	28	9	11	7	16	0.40	0.18	28	0.13	0.06
62%	39%	78%	68%	60%	15%	21%	20%	85%	42%	39%	36%	51%	96%	28%	47%	99%
100% AR													ADJ IMF (RATIO)	1.73 (69)	ADJ REA (RATIO)	14.60 (104)



LOT 61

61 TAC HARD DRIVE J99 ET

REG 4565365
DOB 2/28/21
TATTOO J99
CALVING EASE ★★

LACY GOLD BAR 8123
BIEBER HARD DRIVE Y120
BIEBER LAURA 158W

TBLC CHEYENNE 605
TBLC MISS 605 CHEYENNE 191
TBLC MISS TANK 678

CCF GOLD BAR 0251
LACY MS CHEROKEE 557P
LJC MISSION STATEMENT P27
BASIN LAURA 5301
LCC CHEYENNE B221L
TBLC FAYET410
CRSA 6X
TBLC MS COLT 204G 23P

ACT BW 83
ADJ WW 736
ADJ YW 1255
WDA 3.43

DAM INFO AGE: 12 MPPA: 107

PRO	S	HB	GM	CED	BW	WW	YW	MLK	ME	HP	CEM	ST	MB	YG	CW	REA	BF
99	42	58	13	-2.0	75	117	26	11	10	6	15	0.59	0.00	36	0.40	0.00	
32%	72%	11%	49%	46%	7%	11%	43%	90%	66%	64%	54%	14%	17%	9%	7%	23%	

100% AR ADJ IMF (RATIO) 2.81 (113) ADJ REA (RATIO) 16.06 (114)

Hard Drive is known for his breed leading carcass and growth most of all, but what the breed is finding out is how valuable the females are becoming in herd. Have sold several full brothers over the last few years.



LOT 63

63 TAC INSIGHT J137

REG 4565253
DOB 3/2/21
TATTOO J137
CALVING EASE ★★

9 MILE FRANCHISE 6305
PIE INSIGHT 971
BIEBER TILLY 399W

RIDGE ENHANCED 1124
KLEIN SANDY 331A
RRA SANDY 891 050

SPUR FRANCHISE OF GARTON
C-BAR ABIGRACE Y11
BIEBER BOONE 8000
BIEBER TILLY 303S
RIDGE ENHANCED 9002
RIDGE SHEILA 009-217
5L SIGNATURE 2846-266V
RRA SANDY 519 891

ACT BW (RATIO) 82 (107)
ADJ WW (RATIO) 745 (111)
ADJ YW (RATIO) 1157 (99)
WDA 3.15

DAM INFO AGE: 9 MPPA: 100

PRO	S	HB	GM	CED	BW	WW	YW	MLK	ME	HP	CEM	ST	MB	YG	CW	REA	BF
91	52	38	11	-1.4	71	111	28	1	13	7	13	0.40	0.07	36	0.41	0.04	
46%	50%	45%	71%	58%	14%	19%	26%	41%	19%	54%	79%	51%	56%	10%	7%	89%	

100% AR ADJ IMF (RATIO) 3.08 (114) ADJ REA (RATIO) 14.69 (109)

331A is a milking machine that holds up very well. This match up with Insight may be her best yet. Super soft made with the look and power you would expect.



BIEBER HARD DRIVE Y120 - SIRE OF LOT 61



LOT 64

62 TAC INSIGHT J49

REG 4565339
DOB 2/22/21
TATTOO J49
CALVING EASE ★★

9 MILE FRANCHISE 6305
PIE INSIGHT 971
BIEBER TILLY 399W

5L PERFECT STORM 1201-172D
TAC MS BOADACIA G308-4128
LAZYJ MS BOADACIA 4128-7046

SPUR FRANCHISE OF GARTON
C-BAR ABIGRACE Y11
BIEBER BOONE 8000
BIEBER TILLY 303S
5L THE REAL DEAL 1687-143B
5L RUBY 829-1201
LSF RAB PERFORMANCE 2772Z
JACOBSON KIMA 7046

ACT BW (RATIO) 86 (123)
ADJ WW (RATIO) 697 (104)
ADJ YW (RATIO) 1232 (106)
WDA 3.15

DAM INFO AGE: 3 MPPA: 102 MATURE WT: 1136

PRO	S	HB	GM	CED	BW	WW	YW	MLK	ME	HP	CEM	ST	MB	YG	CW	REA	BF
104	53	51	11	-0.7	65	107	26	6	12	8	14	0.52	0.01	32	0.39	0.02	
26%	48%	20%	72%	71%	29%	26%	38%	68%	32%	35%	66%	25%	23%	17%	8%	48%	

100% AR ADJ IMF (RATIO) 2.32 (86) ADJ REA (RATIO) 16.16 (120)

Tilly is also the dam to Rollin Deep. With Boadacia, Abigrace, Ruby, and Tilly in the pedigree to make females is pretty intriguing. Lots of breed leaders in this pedigree.

64 TAC INSIGHT J162

REG 4565261
DOB 3/4/21
TATTOO J162
CALVING EASE ★★

9 MILE FRANCHISE 6305
PIE INSIGHT 971
BIEBER TILLY 399W

GP WALLACE 016
TAC CHEYENNE C285-148
TBLC MISS 605 CHEYENNE 148

SPUR FRANCHISE OF GARTON
C-BAR ABIGRACE Y11
BIEBER BOONE 8000
BIEBER TILLY 303S
LJC MISSION STATEMENT P27
GP FAITH 803
TBLC CHEYENNE 605
TBLC MS 531

ACT BW (RATIO) 75 (98)
ADJ WW (RATIO) 687 (103)
ADJ YW (RATIO) 1187 (102)
WDA 3.25

DAM INFO AGE: 7 MPPA: 101 MATURE WT: 1604

PRO	S	HB	GM	CED	BW	WW	YW	MLK	ME	HP	CEM	ST	MB	YG	CW	REA	BF
112	73	40	11	-2.6	66	104	28	7	13	7	18	0.48	0.04	32	0.34	0.02	
16%	14%	42%	71%	33%	26%	33%	20%	74%	19%	58%	19%	32%	37%	17%	12%	61%	

100% AR ADJ IMF (RATIO) 3.42 (127) ADJ REA (RATIO) 14.02 (104)

I can just picture these steers in the feed lot. May be my favorite Insight this year due to knowing how the Wallace cattle fed. C285 had a daughter by Leverage that is one of my favorite first calf heifers.

65 TAC INSIGHT J10

REG 4565229
DOB 2/19/21
TATTOO J10
CALVING EASE ★★

9 MILE FRANCHISE 6305
PIE INSIGHT 971
BIEBER TILLY 399W

TAC SECURITY D56
TAC MS FLOWER G190-B4
TAC FLOWER B4

SPUR FRANCHISE OF GARTON
C-BAR ABIGRACE Y11
BIEBER BOONE 8000
BIEBER TILLY 303S
5L BLOCKADE 2218-30B
LAZY MS BRIER 494-976
BECKTON EPIC R397 K
TAC FLOWER Z4

ACT BW	62
ADJ WW	653
ADJ YW	1018
WDA	2.78

DAM INFO	AGE: 3	MPPA:	MATURE WT: 1184													
PRO S	HB	GM	CED	BW	WW	YW	MLK	ME	HP	CEM	ST	MB	YG	CW	REA	BF
99	59	40	12	-3.5	62	100	30	6	13	8	15	0.52	0.10	27	0.25	0.04
33%	37%	42%	61%	20%	43%	41%	9%	67%	14%	37%	58%	25%	70%	32%	23%	91%

100% AR ADJ IMF 3.29 ADJ REA 13.01

His dam goes back to a Basin Ext, combining Security and Insight will make a great heifer bull. There are just so many good ones in the sale this year, it's hard to choose a favorite.



LOT 66



LOT 67

67 TAC LEVERAGE J320

REG 4568735
DOB 3/21/21
TATTOO J320
CALVING EASE ★★

SPUR FRANCHISE OF GARTON
C-BAR LEVERAGE 8115F
ADHM STONY 503C

WDC FIREMAKER 6062 P ET
JR MISS FIREMAKER A23
JR MISS LIMINATOR S1

SPUR FRANCHISE 7070
H & H IRENE LASS 0135
LSF SAGA 1040Y
C-BAR MS STONY A302
M6 GRID MAKER 104 PET
THOMASSWISSERSWEET1764ET
SKYMONT P UNLIMITED 0115
JR SHOWQUEEN P2

ACT BW	94
ADJ WW	724
ADJ YW	1290
WDA	3.60

DAM INFO	AGE: 9	MPPA:	MATURE WT: 1574													
PRO S	HB	GM	CED	BW	WW	YW	MLK	ME	HP	CEM	ST	MB	YG	CW	REA	BF
66	34	33	12	2.3	72	105	26	-12	10	5	10	0.14	-0.39	24	0.92	-0.06
85%	85%	59%	64%	98%	11%	30%	40%	9%	75%	83%	94%	98%	1%	45%	1%	1%

50% AR 50% CH ADJ IMF 2.20 ADJ REA 15.09

Range fire at its finest. This Leverage may be A23's best yet. Growth and carcass.

66 TAC ENTERPRISE J246

REG 4565285
DOB 3/11/21
TATTOO J246
CALVING EASE ★★

9 MILE FRANCHISE 6305
9 MILE ENTERPRISE 8180
DYK RED BIRD 1944-5105

MESSMER PACKER S008
BIEBER SUPRISE 365Y
BIEBER SURPRISE 9827

SPUR FRANCHISE OF GARTON
C-BAR ABIGRACE Y11
GMRA DEUCES 2222
5L BLACKBIRD 1322-1944
MESSMER JOSHUA 019P
MESSMER MILLIE 124P
VGW VALUE 157
BIEBER SUPRISE 7046

ACT BW (RATIO)	92 (121)
ADJ WW (RATIO)	641 (96)
ADJ YW (RATIO)	1108 (95)
WDA	3.01

DAM INFO	AGE: 12	MPPA:	MATURE WT: 1672													
PRO S	HB	GM	CED	BW	WW	YW	MLK	ME	HP	CEM	ST	MB	YG	CW	REA	BF
88	48	41	7	0.8	61	106	26	12	12	5	17	0.28	0.05	28	0.35	0.03
50%	60%	39%	97%	91%	45%	27%	43%	93%	29%	88%	28%	83%	42%	27%	11%	82%

100% AR ADJ IMF (RATIO) 2.55 (95) ADJ REA (RATIO) 13.53 (101)

Power bull here with loads of carcass and grow. Y365 is a Packer daughter that is well known for marbling.

68 TAC AUTHORITY J265

REG 4570745
DOB 3/13/21
TATTOO J265
CALVING EASE ★★

LHD CHOTEAU B1669 P
LT AUTHORITY 7229 PLD
LT KATY 4273 PLD

SDCC JACKHAMMER 734Y
TAC LINDA A512
HATS LINDA 5R12

JDJ JUSTICE U319
LHD MS CIGARSON T983
LT STAGECOACH 8068 PLD
LT KATY 8042 PLD
HXC JACKHAMMER 8800U
BECKTON ANGEL L845 WR
RCC EVA'S CANYON M206
HATS LINDA 1R6

ACT BW	95
ADJ WW	782
ADJ YW	1297
WDA	3.64

DAM INFO	AGE: 9	MPPA:	MATURE WT: 106													
PRO S	HB	GM	CED	BW	WW	YW	MLK	ME	HP	CEM	ST	MB	YG	CW	REA	BF
-21	-48	27	6	1.1	70	99	20	-1	6	1		0.31		13	0.37	-0.06
99%	99%	72%	99%	93%	16%	43%	89%	30%	99%	99%		76%		84%	9%	1%

50% AR 50% CH ADJ IMF (RATIO) () ADJ REA (RATIO) ()

This big boy is a performer. Bigger frame and added pounds for one whopping set of feeder steers.



YEARLING Black Angus Bulls



LOT 69



YON FULL FORCE C398 - SIRE OF LOT 69



SITZ STELLAR 726D - SIRE OF LOT 70

69 TAC FULL FORCE J172

REG
20299819

DOB
03/05/21

TATTOO
J172

CALVING EASE
★★★★

Yon Future Force Z77
Yon Full Force C398
Yon Sarah A100

Yon Future Focus T219
Yon Burgess X212
GDAR Game Day 449
Yon Sarah N170
Sitz Dash 10277
Sitz Barbaramere Jet 3149
S A V Iron Mountain 8066
BVC Charlotte Jess S 834

ACT BW (RATIO)
75 (106)

ADJ WW (RATIO)
571 (101)

ADJ YW (RATIO)
1163 (101)

DAM INFO AGE: 8

CED	BW	WW	YW	MLK	SEN	CW	MB	RE	FAT	SM	SW	SF	SG	SB	SC
11	0.7	50	96	30	3	24	0.85	0.47	0.039	88	54	73	55	128	254
15%	40%	80%	70%	20%	10%	95%	25%	70%	85%	3%	70%	80%	30%	65%	35%

100% ANGUS

ADJ IMF (RATIO) **2.79** (77) ADJ REA (RATIO) **14.2** (108)

Starting the Angus division with one heck of a Full Force son. When visiting ABS in Wisconsin, I was instantly drawn to the powerhouse of a bull and just knew we needed to use him. Check out his \$M.

70 TAC STELLAR J78

REG
20300419

DOB
02/27/21

TATTOO
J78

CALVING EASE
★★★

Mohnen Substantial 272
Sitz Stellar 726D
Sitz Pride 200B

Benfield Substance 8506
Mohnen Glyn Mawr Elba 1758
Connealy Final Product
Sitz Pride 308Y
Mytty In Focus
Black Cana of Conanga 206
WK Return
VAR Magic Primrose 7108

ACT BW (RATIO)
83 (102)

ADJ WW (RATIO)
652 (95)

ADJ YW (RATIO)
1076 (95)

DAM INFO AGE: 5 MATURE WT: 1240

CED	BW	WW	YW	MLK	SEN	CW	MB	RE	FAT	SM	SW	SF	SG	SB	SC
3	1.1	62	110	24	-16	20	0.28	0.26	0.031	69	60	85	28	113	216
80%	50%	45%	45%	60%	55%				30%	55%	50%				

100% ANGUS

ADJ IMF (RATIO) **2.50** (102) ADJ REA (RATIO) **13.1** (94)

Stellar has the best set of feet I have ever witnessed on a mature Angus bull. I was impressed with the length of body while still being moderate in mature frame size. We are not only excited to bring you this son but have several incorporated into the Red Angus herd as well. He does a lot of things right.



71 TAC PAYWEIGHT PLUS J62

REG 20298050
DOB 02/26/21
TATTOO J62

Basin Payweight 1682
Basin Payweight Plus 6048
EXAR Royal Lass 2810

Mogck Sure Shot 1761
Schelske Ms 1761 Macey 461
Schelskes Ms Macey 932

Basin Payweight 006S
21AR O Lass 7017
Connealy Consensus 7229
Exar Royal Lass 1067
MOGCK Sure Shot
Mogck Jane C32
Vermilion Yellowstone
Miss SA Macey 231

ACT BW (RATIO) 66 (93)
ACT WW 683
ADJ YW (RATIO) 1212 (108)

CALVING EASE ★★★★★
DAM INFO AGE: 8 MATURE WT: 1320

CED	BW	WW	YW	MLK	SEN	CW	MB	RE	FAT	\$M	\$W	\$F	\$G	\$B	\$C
12	-1.2	55	98	32	-1	45	0.87	0.47	0.035	88	69	86	56	143	273
10%	10%	65%	65%	15%	15%				80%	3%	30%	50%			

100% ANGUS ADJ IMF (RATIO) 6.37 (175) ADJ REA (RATIO) 13.0 (99)

Payweight Plus is a true CE bull that excels in growth and making excellent females. J62 is so deep I'm surprised he still has hair on his stomach.



BASIN PAYWEIGHT PLUS 6048 - SIRE OF LOTS 71-73

72 TAC PYWEIGHT PLUS J163

REG 20298048
DOB 03/04/21
TATTOO J163

Basin Payweight 1682
Basin Payweight Plus 6048
EXAR Royal Lass 2810

Plainview Lutton E102
HB 701-30
HB466-41

Basin Payweight 006S
21AR O Lass 7017
Connealy Consensus 7229
Exar Royal Lass 1067
Exar Lutton 1831
Plainview Pride C123
HB 41-35
HB 375-35

ACT BW (RATIO) 70 (99)
ACT WW 595
ADJ YW (RATIO) 1030 (92)

CALVING EASE ★★★★★
DAM INFO AGE: 10 MATURE WT: 1348

CED	BW	WW	YW	MLK	SEN	CW	MB	RE	FAT	\$M	\$W	\$F	\$G	\$B	\$C
11	-0.4	55	95	32	-6	27	0.38	0.34	0.025	83	65	85	34	119	237
15%	20%	65%	70%	15%	25%					10%	40%	50%			

100% ANGUS ADJ IMF (RATIO) 3.05 (84) ADJ REA (RATIO) 11.6 (89)

73 TAC PAYWEIGHT J81

REG 20302636
DOB 02/27/21
TATTOO J81

Basin Payweight 1682
Basin Payweight Plus 6048
EXAR Royal Lass 2810

Barstow Rocky C2
OR Miss Rocky 506 813
O Miss F Product 483

Basin Payweight 006S
21AR O Lass 7017
Connealy Consensus 7229
Exar Royal Lass 1067
VAR Rocky 80029
Barstow Queen X134
Barstow Final Product Z62
Pohlman Barbara 483 12

ACT BW (RATIO) 76 (100)
ADJ WW (RATIO) 636 (97)
ACT YW 1160

CALVING EASE ★★★★★
DAM INFO AGE: 4 MATURE WT: 1322

CED	BW	WW	YW	MLK	SEN	CW	MB	RE	FAT	\$M	\$W	\$F	\$G	\$B	\$C
9	0.3	57	104	34	-7	29	0.41	0.36	0.032	86	69	83	35	118	239
30%	30%	60%	55%	10%	30%					4%	30%	55%			

100% ANGUS ADJ IMF (RATIO) 5.61 (128) ADJ REA (RATIO) 14.9 (106)

YEARLING Sim Angus Bulls



74 TAC XPECTATION J384

REG 4568319
DOB 3/30/21
TATTOO J384
CALVING EASE ★★

HOOK'S XPECTATION 36X
TAC XPECTATION G163
ES A66

TAC CONQUEST A115
TAC GROUND SOW C100-A112
TAC GROUND SOW A112

GW PREDESTINED 701T
HOOKS MIKA 141M
RED SPRING CREEK COMMANDER 7
EST3
HXC CONQUEST 4405P
3SCC EUCLA Y115
5L FULL THROTTLE 2237-340W
3SCC BRANDY Y112

ACT BW (RATIO) 86 (108)
ADJ WW (RATIO) 713 (101)
ADJ YW (RATIO) 1326 (105)
WDA 3.74

DAM INFO AGE: 7 MPPA: 103 MATURE WT: 1412

PRO	S	HB	GM	CED	BW	WW	YW	MLK	ME	HP	CEM	ST	MB	YG	CW	REA	BF
-10	-33	24	12	-0.4	60	90	21	2	4	7	0	0.31	0.00	9	0.03	-0.02	
99%	99%	77%	61%	77%	47%	64%	87%	46%	99%	44%	99%	76%	18%	92%	71%	2%	

75% AR 25% SM
ADJ IMF (RATIO) 2.75 (111) ADJ REA (RATIO) 15.34 (114)

What a bull this is. He is so good at the ground while still being one of the most powerful. He is a favorite by many that have seen him.

75 TAC XPECTATION J370

REG 4021953
DOB 3/28/21
TATTOO J370
CALVING EASE ★★

HOOK'S XPECTATION 36X
TAC XPECTATION G163
ES A66

MR HOC BROKER
TLLC 44B
TLLC MISTY 34Y

GW PREDESTINED 701T
HOOKS MIKA 141M
SPRINGCREEK LOTTO 52Y
EST3
SVF STEEL FORCE S701
JM BF H25
WAGR DRIVER 706T
41L

ACT BW (RATIO) 76 (88)
ADJ WW (RATIO) 710 (102)
ADJ YW (RATIO) 1254 (98)

DAM INFO AGE: 8 MATURE WT: 1350

CE	BW	WW	YW	MCE	MLK	MWW	ST	DOC	CW	YG	MB	BF	RE	SAPI	STI
12.3	-0.5	68.6	98.1	6.4	23.0	57.1	17.4	7.4	17.9	-0.39	0.02	-0.080	0.73	119.2	67.3
50%	35%	75%	90%	60%	50%	70%	25%	95%	90%	10%	99%	15%	40%	75%	90%

3/4 SM 1/8 AN 1/8 MA
ADJ IMF (RATIO) 1.93 (77) ADJ REA (RATIO) 14.31 (99)

BLACK. A nice baldy out of a Broker female that never misses. Put him on some red cows and make those sought-after red baldies.

CALVING EASE STAR RATING

- ★★★★ Sure shot calving ease
- ★★★ All cows and most heifers
- ★★ Calve easy on cows
- ★ Recommended for cows



76 TAC XPECTATION J241

REG 4021946
DOB 3/10/21
TATTOO J241
CALVING EASE ★★

GW PREDESTINED 701T
HOOK'S XPECTATION 36X
HOOKS MIKA 141M

Brown JYJ Redemption Y1334
TAC MS REDEMPTION B6
COMMERICAL RED ANGUS

G A R PREDESTINED
GW MISS LUCKY STRIKE 363
HOOKS SHEAR FORCE 38K
HOOKS IRISH MAXINE 29K
BECKTON NEBULA P P707
JYJ MS JOLENE W16

ACT BW (RATIO) 97 (111)
ADJ WW (RATIO) 742 (106)
ADJ YW (RATIO) 1319 (103)

DAM INFO AGE: 8 MATURE WT: 1330

CE	BW	WW	YW	MCE	MLK	MWW	ST	DOC	CW	YG	MB	BF	RE	SAPI	STI
12.5	-0.8	64.3	100.3	6.8	27.2	57.1	14.3	14.9	13.6	-0.19	0.32	-0.035	0.39	124.3	71.0
50%	30%	90%	85%	50%	20%	70%	60%	20%	99%	65%	50%	65%	90%	65%	80%

3/8 SM 1/2 AR 1/8 AN
ADJ IMF (RATIO) 3.19 (127) ADJ REA (RATIO) 14.72 (102)

RED. A really nice Xpection son with added frame and thickness. You just can't go wrong with good stock.



77 TAC TRUSTEE J216

REG 4021945
DOB 3/8/21
TATTOO J216
CALVING EASE ★★

CDI REVIVAL 370D
CDI TRUSTEE 387F
CDI MISS HOMETOWN 163C

A STEP UP X27
ROCHE LE82
LE EVER READY Y932

TJ MAIN EVENT 503B
CDI MS YESTERDAY 29B
CDI HOMETOWN 246A
CDI MS XPECTATION 64Z

ACT BW (RATIO) 83 (96)
ADJ WW (RATIO) 761 (109)
ADJ YW (RATIO) 1270 (99)

DAM INFO AGE: 6 MATURE WT: 1300

CE	BW	WW	YW	MCE	MLK	MWW	ST	DOC	CW	YG	MB	BF	RE	SAPI	STI
11.8	0.1	77.7	112.3	4.9	23.0	79.0	15.1	9.8	37.5	-0.42	0.23	-0.081	1.05	128.3	77.4
60%	45%	45%	60%	85%	50%	2%	50%	80%	30%	10%	70%	10%	4%	55%	55%

1/2 SM 5/16 AN 3/16 CS
ADJ IMF (RATIO) 2.35 (94) ADJ REA (RATIO) 15.58 (108)

BLACK. Look at the carcass on this rip. High performer being #1 in weaning ratiing a 109.



RAVEN POWERBALL 53 - SIRE OF LOT 78



IR IMPERIAL D948 - SIRE OF LOT 78

These Imperial sons are the real deal. Awesome phenotype, performance, and carcass. You can close your eyes and pick. They are peas in a pod. What other red Simmental has the marbling of Imperial? I don't think there is one like him.



LOT 78



LOT 79

78 TAC POWERBALL J258

REG 4021949
DOB 3/12/21
TATTOO J258
CALVING EASE ★★

PA POWER TOOL 9108
RAVEN POWERBALL 53
RAVEN EMMA E 4241
TJ FINAL COPY 267Z
HLTS CHLOE
MF YESSICA

G A R PREDESTINED
SHAMROCKS BEEBEE QUEEN 3095
HOOVER DAM
PCAR EMMA E 2215
S A V FINAL ANSWER 0035
TJ 34X
SFI FULL POWER W4
RHODES MINA P91

ACT BW (RATIO) 93 (107)
ADJ WW (RATIO) 749 (107)
ADJ YW (RATIO) 1356 (106)

DAM INFO AGE: 8 MATURE WT: 1372

CE	BW	WW	YW	MCE	MLK	MWW	ST	DOC	CW	YG	MB	BF	RE	SAPI	STI
14.0	-0.1	77.5	122.5	8.9	22.9	60.9	13.8	14.1	43.9	-0.08	0.51	-0.014	0.59	139.4	82.2
30%	45%	45%	40%	20%	50%	50%	65%	25%	15%	90%	20%	85%	65%	35%	35%

3/8 SM 5/8 AN ADJ IMF (RATIO) 2.66 (106) ADJ REA (RATIO) 15.05 (105)

BLACK. He is exactly the picture in our head when combining Powerball on B485. Growth, power, and CE.

79 TAC IMPERIAL J248

REG 4021947
DOB 3/11/21
TATTOO J248
CALVING EASE ★★

IR IMPERIAL B772
IR IMPERIAL D948
IR MS DUAL FOCUS W086
MR HOC BROKER
TAC MS BROKER E2
TAC MS 1086

WS BEEF KING W107
IR MS LAUSANNE U022
TNT DUAL FOCUS T249
IR MS LUCKY CHARM T976
SVF STEEL FORCE S701
JM BF H25

ACT BW (RATIO) 72 (84)
ADJ WW (RATIO) 628 (90)
ADJ YW (RATIO) 1200 (94)

DAM INFO AGE: 5 MATURE WT: 1596

CE	BW	WW	YW	MCE	MLK	MWW	ST	DOC	CW	YG	MB	BF	RE	SAPI	STI
14.5	-1.9	58.8	89.8	6.6	22.8	55.2	13.4	9.3	20.7	-0.32	0.53	-0.053	0.74	141.7	76.2
25%	15%	95%	95%	55%	55%	80%	70%	85%	85%	25%	20%	35%	35%	30%	60%

3/4 SM 1/4 AN ADJ IMF (RATIO) 4.02 (160) ADJ REA (RATIO) 13.73 (95)

BLACK.

80 TAC IMPERIAL J232

REG 4022314
DOB 3/10/21
TATTOO J232
CALVING EASE ★★

IR IMPERIAL B772
IR IMPERIAL D948
IR MS DUAL FOCUS W086
W/C EXECUTIVE ORDER 8543B
TAC MS ORDER F48
TAC MS PERFECTION D131

WS BEEF KING W107
IR MS LAUSANNE U022
TNT DUAL FOCUS T249
IR MS LUCKY CHARM T976
W/C UNITED 956Y
MISS WERNING KP 8543U

ACT BW 73
ADJ WW 628
ADJ YW 1131

DAM INFO AGE: 4 MATURE WT: 1216

CE	BW	WW	YW	MCE	MLK	MWW	ST	DOC	CW	YG	MB	BF	RE	SAPI	STI
15.4	-2.3	66.1	102.0	7.6	20.1	61.5	15.4	13.8	18.8	-0.37	0.59	-0.063	0.81	154.4	82.8
20%	15%	85%	80%	35%	75%	45%	50%	30%	90%	15%	15%	25%	25%	15%	35%

5/8 SM 9/32 AN 1/16 AR 1/32 MA ADJ IMF (RATIO) 2.99 (100) ADJ REA (RATIO) 14.42 (100)

RED.





LOT 81

83

TAC IMPERIAL J116

REG NA IR IMPERIAL B772 WS BEEF KING W107 ACT BW 75
 IR IMPERIAL D948 IR MS LAUSANNE U022 ACT WW 638
 IR MS DUAL FOCUS W086 IR MS LUCKY CHARM T976 ACT YW 1208
 HPF UNO MAS 4D WLE UNO MAS X549
 TAC MS DURHEIM G48-E83 TYLERTOWN MELTED
 TAC DURHEIM E83 TAC SHOOTER A435
 BIEBER DURHEIM 281Z

CALVING EASE ★★

DAM INFO AGE: 5 MATURE WT: 1208

PRO	S	HB	GM	CED	BW	WW	YW	MILK	ME	HP	CEM	ST	MB	YG	CW	REA	FAT
138	85	53	15	-2.0	61	90	20	-13	13	8	16	0.57	-0.40	13	0.74	-0.07	

1/2 SM 1/2 AR ADJ IMF 2.62 ADJ REA 13.50

RED. Sells as commerial

100

TAC REBOURNE H776

REG 4565605 5L BOURNE 117-48A 5L ADVANTAGE 3267-221Y ACT BW (RATIO) 74 (97)
 TAC REBOURNE F105 ET 5L ROXIE 854-117 RED HILL B571 JULIAN 84S WDA
 SDCC MARIGOLD 501W RED HILL B571 JULIAN 84S
 BECKTON NEBULA M045 BECKTON LANA M809 EP
 TAC VENUS D54 BECKTON NEBULA M045 HXC CONQUEST 4405P
 EIR A203 EIR Y218

CALVING EASE

DAM INFO AGE: 6 MPPA: 98 MATURE WT:

PRO	S	HB	GM	CED	BW	WW	YW	MILK	ME	HP	CEM	ST	MB	YG	CW	REA	BF
80	55	24	14	-4.1	62	97	30	6	13	6	16	0.45	0.10	11	-0.04	0.03	
66%	44%	77%	26%	13%	42%	47%	12%	70%	13%	66%	41%	39%	73%	88%	85%	81%	

100% AR ADJ IMF 3.14 ADJ REA 11.84

RED.

81

TAC IMPERIAL J154

REG 4021943 IR IMPERIAL B772 WS BEEF KING W107 ACT BW (RATIO) 89 (110)
 IR IMPERIAL D948 IR MS LAUSANNE U022 TNT DUAL FOCUS T249 IR MS LUCKY CHARM T976
 IR MS DUAL FOCUS W086 IR MS LUCKY CHARM T976 GW PREDESTINED 701T HOOKS MIKA 141M PROFIT
 HOOK'S XPECTATION 36X TAC MS ALL PROFIT G66-E132 TAC MS ALL PROFIT E132 TAC MISS MONEY W103

CALVING EASE ★★

DAM INFO AGE: 3 MATURE WT: 1098

CE	BW	WW	YW	MCE	MLK	MWW	ST	DOC	CW	YG	MB	BF	RE	SAPI	STI
12.7	0.6	70.0	105.0	6.6	18.9	53.5	18.5	13.7	19.9	-0.41	0.59	-0.068	0.91	153.5	81.4
45%	55%	75%	75%	55%	85%	85%	15%	30%	90%	10%	15%	25%	15%	15%	40%

3/4 SM 7/32 AN 1/32 MA ADJ IMF (RATIO) 2.99 (100) ADJ REA (RATIO) 14.42 (100)

RED.



LOT 82

82

TAC IMPERIAL J123

REG 4021941 IR IMPERIAL B772 WS BEEF KING W107 ACT BW (RATIO) 93 (115)
 IR IMPERIAL D948 IR MS LAUSANNE U022 TNT DUAL FOCUS T249 IR MS LUCKY CHARM T976
 IR MS DUAL FOCUS W086 IR MS LUCKY CHARM T976 GW PREDESTINED 701T HOOKS MIKA 141M TAC A191
 HOOK'S XPECTATION 36X TAC MS MONEY G55-E358 TAC MS MONEY B344
 TAC MS MONEY E358

CALVING EASE ★★

DAM INFO AGE: 3 MATURE WT: 1172

CE	BW	WW	YW	MCE	MLK	MWW	ST	DOC	CW	YG	MB	BF	RE	SAPI	STI
12.9	-0.5	73.1	111.2	6.8	19.5	54.3	18.3	15.2	19.1	-0.37	0.69	-0.056	0.85	161.4	86.7
45%	35%	60%	65%	50%	80%	85%	20%	15%	90%	15%	10%	35%	20%	10%	20%

3/4 SM 1/8 AN 1/8 AR ADJ IMF (RATIO) 3.44 (137) ADJ REA (RATIO) 15.19 (105)

RED.





The Females

This will be the first year we have ever offered purebred females for sale. They are straight out of the keeper pen. Have the look to be show heifers and the pedigree to be profitable cows. Wanted to give you a little sample of the type we will be offering as breds in December. Enjoy.

Save the date!

A TA CATTLE
Annual Bull and Female Sale

OUR SALE DATE IS CHANGING!

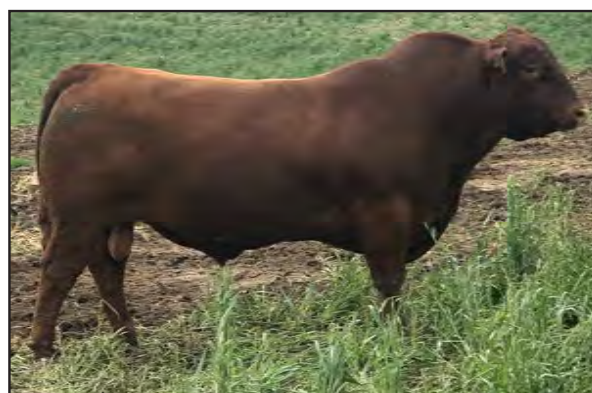
December 16, 2022
CHECK TACATTLE.COM FOR MORE INFO

This will be the final year we will be offering yearlings in the spring. As you look through the catalog, you will notice we are selling half-aged bulls that were held over just for this transition. We plan to have our annual bull sale December 16, 2022 with a select group of bred females. We are very excited for the future and feel this will help us better serve you.





LOT 84



C-BAR LEVERAGE 8115F - SIRE OF LOT 86

84 TAC MS RUBY J68-D76

REG 4567117
DOB 2/26/21
TATTOO J68

PIE STOCKMAN 4051
PIE QUARTERBACK 789
PIE RUBY 520

WEBR TOMAHAWK 1204
TAC MS RUBY D76
JAG RUBY 914W

LSF SAGA 1040Y
PIE LAKOTA 046
PIE ONE OF A KIND 352
PIE RUBY 381
WEBR DOC HOLLIDAY 2N
PFFR MS NYACK 237
BROWN COMMITMENT S7206
LONE ROCK MS ESSEX 376

ACT BW (RATIO)	60 (83)
ADJ WW (RATIO)	545 (95)
ADJ YW (RATIO)	793 (94)
WDA	2.14

DAM INFO AGE: 6 MPPA: 102

PRO S	HB	GM	CED	BW	WW	YW	MLK	ME	HP	CEM	ST	MB	YG	CW	REA	BF
108	61	47	16	-4.9	56	93	35	1	8	10	16	0.69	0.04	13	0.05	0.02
21%	33%	27%	14%	7%	63%	57%	1%	37%	92%	6%	40%	6%	38%	85%	67%	46%

100% AR

86 TAC CHEYENNE J363-E106

REG 4567119
DOB 3/26/21
TATTOO J363

SPUR FRANCHISE OF GARTON
C-BAR LEVERAGE 8115F
ADHM STONY 503C

TAC A191
TAC CHEYENNE E106
TBLC MISS 605 CHEYENNE 132

SPUR FRANCHISE 7070
H & H IRENE LASS 0135
LSF SAGA 1040Y
C-BAR MS STONY A302
LSF TAKEOVER 9943W
TBLC MISS 605 CHEYENNE 191
TBLC CHEYENNE 605
TBLC MISS TANK 749

ACT BW (RATIO)	83 (117)
ADJ WW (RATIO)	604 (105)
ADJ YW (RATIO)	891 (106)
WDA	2.42

DAM INFO AGE: 5 MPPA: 102

PRO S	HB	GM	CED	BW	WW	YW	MLK	ME	HP	CEM	ST	MB	YG	CW	REA	BF
104	51	53	13	-1.5	64	105	26	5	11	8	15	0.53	0.03	25	0.34	0.03
25%	53%	16%	38%	56%	34%	31%	43%	61%	46%	29%	60%	22%	30%	38%	12%	71%

100% AR



LOT 85



LOT 87

85 TAC MS MARIGOLD J330-B23

REG 4567121
DOB 3/22/21
TATTOO J330

5L THE REAL DEAL 1687-143B
5L PERFECT STORM 1201-172D
5L RUBY 829-1201

SDCC JACKHAMMER 734Y
TAC MARIGOLD B23
SDCC MARIGOLD 501W

5L DEFENDER 560-30Z
5L FIREFLY 275-1687
BUF CRK THE RIGHT KIND U199
5L RUBY 162-829
HXC JACKHAMMER 8800U
BECKTON ANGEL L845 WR
RED HILL B571 JULIAN 84S
BUF CRK MARIGOLD T132

ACT BW	70
ADJ WW	567
ADJ YW	819
WDA	2.25

DAM INFO AGE: 8 MPPA: 102

PRO S	HB	GM	CED	BW	WW	YW	MLK	ME	HP	CEM	ST	MB	YG	CW	REA	BF
68	30	38	12	-2.3	58	91	23	1	9	6	13	0.45	0.02	20	0.18	0.01
83%	89%	46%	52%	39%	56%	60%	69%	37%	79%	72%	81%	39%	25%	62%	37%	36%

100% AR

87 TAC MS GUINNESS

REG 4024235
DOB 3/9/21
TATTOO J223

WS ALL ABOARD B80
OMF/DK GUINNESS 667
OMF/DK CHEERS C88

COMMERICAL RED ANGUS
1R2
COMMERICAL RED ANGUS

WS ALL-AROUND Z35
WS LITTLE SISTER W37
MR NLC UPGRADE U8676
OMF/KB FINESSE Y4

ACT BW	77
ADJ WW	527

DAM INFO AGE: 11 MATURE WT: 1588

CE	BW	WW	YW	MCE	MLK	MWW	ST	DOC	CW	YG	MB	BF	RE	SAPI	STI
9.1	1.1	70.0	106.3	3.3	21.0	72.7	13.3	13.2	28	-0.23	0.35	-0.045	0.61	123.0	73.3
90%	65%	75%	75%	95%	70%	10%	70%	35%	65%	55%	45%	50%	60%	65%	70%

1/2 SM 1/2 AR

TA CATTLE
502 20 Road
Thurston, NE 68062

A

TA CATTLE

Annual Bull and Female Sale

FRIDAY AT 1:30 PM

April 8, 2022

WEST POINT LIVESTOCK / WEST POINT, NE



DVAuction
Broadcasting Real-Time Auctions