



# ATA CATTLE

*Annual Bull & Female Sale*

YOUR

*One*

*Stop*

BULL

SHOP



THURSDAY - 12:00 PM

## APRIL 1, 2021

WEST POINT LIVESTOCK / WEST POINT, NE

RED ANGUS - BLACK ANGUS - SIMMENTAL - CHAROLAIS CROSS



**Terry and Julie Albrecht**  
1905 H Avenue  
Thurston, NE 68062  
Cell: (402) 922-1001



**Travis and Lexi Albrecht**  
**Taryn, Amelia, Anson**  
502 20 Road  
Thurston, NE 68062  
Cell: (402) 922-1800



**Andy and Abbie Albrecht**  
**Atwood, Ariat**  
45212 861st Road  
Bassett, NE 68714  
Home: (402) 244-5245  
Cell: (402) 922-1000

# A TA CATTLE

*Annual Bull and Female Sale*

THURSDAY - 12:00 PM

*April 1, 2021*

**WEST POINT LIVESTOCK / WEST POINT, NE**

*Welcome -*

2020 was a busy yet rewarding year for us at TA Cattle. Travis took over as the ABS Global Beef representative for Northeast Nebraska and Andy took a position with Top Dollar Angus as a feedlot specialist.

We strive to produce the best cattle for our customers. We felt these positions would help our clients stay up-to-date with the feeder calf programs, grid programs, and assist in finding breed-leading sires. Our goals have not changed; we want to breed cattle that are dual purposed. Feed efficient, maternal, structurally sound, and easy to handle that perform on grass and bring back premiums on the grid.

We are confident in our genetics and know how they perform in the feedlot. TA Cattle would like to have the option of custom feeding your calves or buying them. As we see these cattle mature, it allows us to improve our genetics year after year. Our cattle are the real-world kind and they can gain weight in normal range conditions and perform in the feedlot. We take pride in our family operation and this wouldn't be possible without you. If you have any questions about our program and the bulls, please reach out to us. We love talking cattle and hope to see you on sale day.

Thanks again to all our customers, future customers, and everyone that helped make this sale possible.

*Thank you*  
**TA CATTLE**



A

# SALE INFORMATION

## SALE LOCATION

West Point Livestock Auction  
839 South Colfax | West Point, NE 68788  
Brian Brester.....402-750-5821

## SALE DAY CONTACTS

Terry Albrecht.....402-922-1001  
Andy Albrecht.....402-922-1000  
Travis Albrecht.....402-922-1800

## AUCTIONEER

Jon Schaben.....712-263-0755

## RINGMEN

Chris Beutler, Midwest Messenger.....402-380-8244  
Tom Rooney, Midwest Marketer.....515-491-6025

## SPECIAL GUESTS

Berrett Simon, Red Angus Association.....316-452-1792  
Myron Benes.....402-741-2040  
Andy Albrecht, Top Dollar Angus.....402-922-1000

## VETERINARIANS

Pender-Emerson Vet Clinic.....402-695-2202  
Drs. James Albrecht and Melissa Heberer  
Josh Beutler.....402-385-3155

## DESIGN & PHOTOGRAPHY

Hannah Shroyer, Design Unbridled.....402-841-4216  
Ashlee Tien, Photography.....

## ACCOMMODATIONS

Horizon Inn and Suites.....402-372-1959  
Super 8.....402-372-3998

## ANNOUNCEMENTS

Announcements from the block take precedence over the information in this catalog.

## CATTLE VIEWING

Cattle can be viewed online at DV Auction.com or if you would like to view them in person, call Travis to arrange a time.

## ONLINE BIDDING

Visit DV Auction.com a few days before the sale to sign up for online bidding. The sale will be broadcast live.

**DVAuction**  
Broadcasting Real-Time Auctions

**TACATTLE.COM**

## RETAINED INTEREST

We are retaining ½ interest in all bulls in the sale. We are selling the remaining ½ interest, full possession, and full salvage value. This option gives TA Cattle the option to collect, use, and market semen from the bull and does not restrict the purchaser from doing the same. This collection, unless agreed otherwise, would be done at the expense of TA Cattle, at the buyer's convenience. Also at the time of purchase, the highest bidder on a retained interest bull may elect to purchase exclusive semen rights for 100% of the purchase price in addition to the purchased price on retained bulls. If a buyer elects to purchase exclusive semen rights, TA Cattle interest then becomes in herd use only, but TA Cattle retains all rights to use the bull within their herd.

## GUARANTEE

All bulls selling for \$3000 or more are guaranteed for the first breeding season. A breeding season is defined as the 90 day period following the first turnout of the bull. If a replacement bull is available, he will be provided or if the buyer prefers, credit toward one bull will be given in the following sale, less salvage value of the injured bull. All injured bulls must be diagnosed by a veterinarian. Please notify us as soon as possible should injury occur and prior to the injured bull being sold for salvage.

## VACCINATION RECORD

All cattle have been vaccinated, starting at 30 days of age, at grass turn out, and again at pre-weaning and post-weaning. They were poured and dewormed. Vaccinations include 7-way clostridial, IBR, BVD, P13, BRSV, haemophilus somnus, and pasturellas. Any positive test results will be noted with EPDs throughout the catalog. The open heifers have also been Bangs vaccinated. The bulls and heifers have had their pre-breeding shot—Express FP 5-VL5. If you would like specific details on products used please give us a call. The bulls will be sold as guaranteed breeders according to the sale terms and conditions of the RAAA. Load out can be done anytime during the sale after settlement.

## DELIVERY

Free delivery up to 300 miles. Any bulls remaining will be hauled back to TA Cattle's feedlot and boarded free of charge until April 21. After that there will be a \$3.50/hd/day feed charge until they are picked up or delivered. If you would like TA Cattle to feed and breed the open heifers, let us know right after the sale so arrangements can be made. If you do not need our services, then heifers must be picked up sale day or the couple days following at West Point Livestock.

## CALVING EASE STAR RATING

- ★★★★ **Sure shot calving ease**
- ★★★ **All cows and most heifers**
- ★★ **Calve easy on cows**
- ★ **Recommended for cows**



# RED ANGUS ASSOCIATION GUIDE TO EPDS

**HB ..... HerdBuilder Index** - Need bulls for developing a profitable cowherd and maximizing the value of marketed progeny? Select a bull with a high HB value.

**GM ..... GridMaster Index** - If you market all of your calf crop and want to increase the value of that calf crop, select a bull with a high GM value to maximize your profit.

**CED ..... Calving Ease Direct** - Breeding Heifers? Select bulls with a high CED to increase the probability that the heifers will calve unassisted.

**BW ..... Birth Weight** - Predicts differences in birth weight. BW is included in the CED EPD, so simplify your decisions by selecting bulls based on CED instead of BW.

**WW ..... Weaning Weight and YW ..... Yearling Weight** - Predicts differences in weight at weaning and yearling. While selection based on these growth measures can increase your payweight, be cautious what the bull's other EPDs are.

**Milk ..... Milk** - Predicts differences in weaning weight of daughter's progeny due to milk production.

**ME ..... Maintenance Energy** - Selecting bulls with a lower ME EPD will decrease the amount of feed his daughters will require to maintain body weight.

**HPG ..... Heifer Pregnancy** - Retaining heifers? Select bulls with a high HPG to increase the percentage of exposures that result in a calving observation.

**CEM ..... Calving Ease Maternal** - Another number to pay attention to if you are retaining heifers. Selecting bulls with a high CEM will increase the probability of those daughters calving unassisted.

**STAY ..... Stayability** - The most important trait if your goal is developing cows that stay productive, thus increasing your profitability. Bulls that have a high Stay EPD are expected to sire daughters that remain productive in the herd until at least 6 years of age.

**MARB ..... Marbling Score** - Select bulls with high MARB EPD to increase the number of progeny that grade Choice or Prime.

**YG ..... Yield Grade** - Marketing calves on a grid? Placing selection pressure on YG EPD will decrease the number of YG discounts on gridmarketed progeny.

**CW ..... Carcass Weight** - Selecting bulls with a high CW EPD will increase the weight of the hanging carcass, which directly impacts revenue.

**REA ..... Rib Eye Area** - Need to add muscle? Select bulls with a high REA EPD to increase rib eye area, which favorably increases Yield Grade.

**BF ..... Backfat** - Need to reduce waste in carcasses? Select bulls with a low FAT EPD to reduce backfat, which favorably increases Yield Grade.

A



# SIMMENTAL ASSOCIATION GUIDE TO EPDS

**Calving Ease (CE):** Percent of unassisted births when used on heifers.

**Birth Weight (BW):** Pounds of birth weight.

**Weaning Weight (WW):** Pounds of weaning weight.

**Yearling Weight (YW):** Pounds of yearling weight.

**Maternal Calving Ease (MCE):** Percent of unassisted births in first-calving daughters.

**Milk (MLK):** Pounds of weaning weight due to milk.

**Maternal Weaning Weight (MWW):** Pounds of weaning weight due to milk and growth.

**\$Indexes:** Though EPDs allow for the comparison of genetic levels for many economically important traits, they only provide a piece of the economic puzzle. That's where \$ indexes come in. Through well conceived, rigorous mathematical computation, \$ indexes blend EPDs and economics to estimate an animal's overall impact on your bottom line. The same technology that led to the dramatic progress in swine, poultry and dairy genetics over the last several decades was used to develop the following \$ indexes:

- **All-Purpose Index (API):** Evaluates sires for use on the entire cow herd (bred to both Angus first-calf heifers and mature cows) with the portion of their daughters required to maintain herd size retained and the remaining heifers and steers put on feed and sold grade and yield.
- **Terminal Index (TI):** Evaluates sire for use on mature Angus cows with all offspring put on feed and sold grade and yield.

**Using API and TI:** First, determine which index to use; if you're keeping replacements use API, if not, TI. Then, just as with EPDs, zero in on the unit difference between bulls. (As described above, index units are in dollars per cow exposed.) The difference can be used to determine how much a bull is worth compared to another. Or, put another way, how much you can pay for one bull compared to another. For example, when buying an all-purpose type sire, you can quickly figure a bull scoring +100 for API is worth an extra \$6,000 over a +50 bull if both are exposed to 30 cows over 4 years (\$50 diff. x 30 hd. x 4 yr. = \$6,000). A percentile-ranking chart is required to determine where a bull's index value ranks him relative to other bulls in the breed. For percentile rankings or more detailed information about EPDs and \$ indexes visit [www.simmental.org](http://www.simmental.org).

**Yield Grade (YG):** Yield grade score.

**Carcass Weight (CW):** Pounds of carcass weight.

**Marbling (MRB):** Marbling score. Back Fat (BF): Inches of backfat.

**Ribeye Area (REA):** Square inches of ribeye.

**All-Purpose Index (API):** Dollars per cow exposed under an all-purpose-sire scenario. (See below for more details.)

**Terminal Index (TI):** Dollars per cow exposed under a terminal-sire scenario (See below for more details.)

# COMMERCIAL HEIFERS

## 140 REPLACEMENT HEIFERS

Moderate group of heifers that are going to make fantastic momma cows. I don't think a guy could go wrong with any of these. All proven herd sires that bring great mothering ability, udder suspension, and teat size. These are the kind that will stay in the herd for years and pay for themselves quickly.

*Ready to breed whenever it suits your operation!*  
**Multimin 90 - Pre Breeding - Tract Scored - Guaranteed Open**



**Medium Frame / Red Angus**  
Sired by TAC Takeover A191 and 501W x Bourne sons



**Medium Frame / Black (Red Carriers)**  
Sired by TAC Takeover A191 and 501W x Bourne sons



**Medium Frame / 19 Black, 1 Red**  
Sired by Santa Fe C558, Black Jack E14, Uno Mas 40



**Medium-Large Frame / Red Angus/Char**  
Sired by Wallace x 191  
Purchased from a bull customer



**Larger Frame / Red Angus/Char**

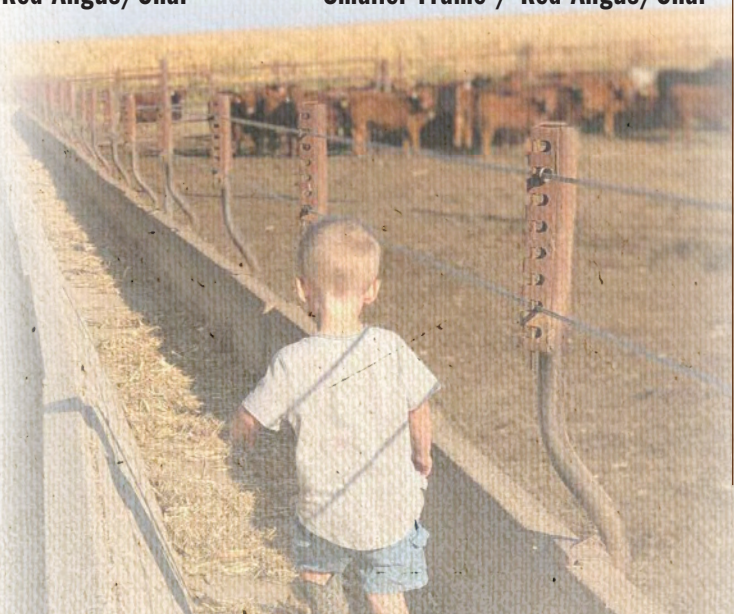


**Smaller Frame / Red Angus/Char**



**Medium-Large Frame / Red Angus**  
Purchased from a bull customer

A





# Top Dollar Angus Feeder Calf Program

## Promote Your Verified Genetic Investment

Top Dollar Angus is the industry leader in third-party genetic verification and marketing assistance for superior Angus and Red Angus-based feeder cattle. Our program stamps a unique identity on the 'best of the best' by verifying and then showcasing their genetic merit. The Top Dollar Angus team works directly with a large number of feedyards and buyers to provide them with documented superior feeder cattle, coupled with genetic risk mitigation and the precision understanding they need to pursue your cattle with absolute confidence.

Top Dollar Angus enables cow-calf producers to benefit from the genetic value already built into their herds. Producers that invest in high-end genetics, as well as strong health and nutrition programs, need a means of positively differentiating their calves from average cattle. Top Dollar Angus does that. Industry demand is strong for genetically superior feeder calves with the right supporting documentation. Don't make buyers guess, let them know by putting the Top Dollar Angus badge of honor on your premium genetic investment.



### How it Works:

Our program begins with a FREE genetic evaluation based on the current/past herd sires used in your program. We evaluate the sires used in your herd based on their growth and carcass merit characteristics. A herd that qualifies for Top Dollar Angus has cattle that are at least 50% Angus or Red Angus and also ranks in the top 25% of its respective breed for growth and carcass merit.

Once qualified, our team provides boots on the ground to share this valuable information with buyers looking for high quality cattle that will go on feed and perform. Our team has experience coast to coast and works directly in all channels (video, local auction, direct and internet). Plus, we have the resources to provide a very fast turn-around.

### What our Customers Say:

*"Top Dollar Angus is a program that benefits all levels of the industry. The seedstock producer is rewarded for providing superior genetics to the commercial cattleman, who in turn supplies the feeder with efficient cattle that will produce top-end carcasses. As Top Dollar Angus continues to raise their qualifying standard, these cattlemen will have to up their game to purchase the genetics that will fit the program. These cattlemen will see a return on investment when offering reputation feeders at market time."*

— Jon Pedotti — San Simeon Creek Ranch, California



**Nate Smith**, General Manager • (620) 546-4839 • [nate@topdollarangus.com](mailto:nate@topdollarangus.com)  
**Kacey Jacobson** • (701) 391-4646 • [kacey@topdollarangus.com](mailto:kacey@topdollarangus.com)  
**Jake Feddes** • (406) 581-8157 • [jake@topdollarangus.com](mailto:jake@topdollarangus.com)  
**Adam Menker** • (419) 310-5344 • [adam@topdollarangus.com](mailto:adam@topdollarangus.com)  
**Jason Gagnon** • (559) 723-6362 • [jason@topdollarangus.com](mailto:jason@topdollarangus.com)  
**Andy Albrecht** • (402) 922-1000 • [andy@topdollarangus.com](mailto:andy@topdollarangus.com)

[www.topdollarangus.com](http://www.topdollarangus.com)



# better equipped **BETTER RESULTS**

Your ABS Representative is equipped with the finest people, technology, research, quality, and genetics. We have the ability to ensure the long term direction of your herd is on track and to make your breeding program a success. Together, we can accomplish your goals.



get to know

## **YOUR LOCAL REPRESENTATIVE**

Your ABS Representative is backed by the finest in breeding, research and management. Our commitment is to give you the most valuable genetics and programs for your dollar.

**TRAVIS ALBRECHT** Thurston, NE  
402-922-1800 - talbrecht03@hotmail.com

## **SET UP FOR SUCCESS**

✓ **Full Genetic Services**

*Genetic selection, Custom A.I. and Synchronization Services*

*Implementation of Synchronization Programs, Calf Marketing Assistance*

✓ **We at ABS strive to be leaders and have the resources to help you at every turn.**

## **STAY IN TOUCH**



facebook.com/absbeef



@absbeef

**1-800-ABS-STUD | ABSBEEF.COM**

RED ANGUS BULLS

# LOT 1 FEATURE BULL



Reference Grand Sire



TAC SECURITY D56

Reference Grand Dam



3SCC VERNA B47

We have had several Basin Hobo sons from Sonstegards over the years. He makes exceptional females that milk and breed back on time with true longevity and flawless feet and legs. The Security females are the cowboy kind, calving ease, moderate, easy keeping, and heavy milking females. Maternal and carcass combined by adding today's carcass leaders Hard Drive and Blockade.

We trust in his genetics and know what he can offer to the breed. Very rarely can you make one with the structure and style of Drifter, then you analyze what he offers on paper. 14 EPDs in the top 20% of the breed. Unheard of 178 IMF ratio, #3 of 62 in WW, #4 of 56 in YW, all while coming from a first calf heifer at a modest 65 pounds. When I think dual purpose, I think TAC Drifter.

A

## 1 TAC DRIFTER H10

REG 4392039  
DOB 2/19/20  
TATTOO H10  
CALVING EASE ★★★★★

BASIN HOB0 79E  
BASIN HOB0 0545  
BASIN ERICA 330E

TAC SECURITY D56  
TAC MS VERN A F66 ET  
3SCC VERN A B47

BUF CRK HOB0 2595  
DOUBLE FORK 079Z  
BITTERR00T GOLD 25XA  
BASIN ERICA 3380  
5L BLOCKADE 2218-30B  
LAZYJ MS BRIER 494-976  
BIEBER HARD DRIVE Y120  
3SCC VERN A U105

ACT BW (RATIO) 65 (93)  
ADJ WW (RATIO) 635 (118)  
ADJ YW (RATIO) 1323 (114)  
WDA  
3.31

DAM INFO AGE: 3 MPPA: 107 MATURE WT: 1090

PRO	S	HB	GM	CED	BW	WW	YW	MLK	ME	HP	CEM	ST	MB	YG	CW	REA	BF
185	113	72	17	-3.9	69	111	28	-1	10	9	20	0.65	0.15	37	0.25	0.05	
1%	2%	4%	4%	14%	17%	17%	21%	35%	78%	11%	3%	7%	93%	5%	19%	96%	

100% AR      ADJ IMF (RATIO) 5.52 (178)      ADJ REA (RATIO) 13.5 (103)

## 2 TAC HOB0 H36

REG 4392117  
DOB 2/23/20  
TATTOO H36  
CALVING EASE ★★★★★

BASIN HOB0 79E  
BASIN HOB0 0545  
BASIN ERICA 330E

TAC MOVIN DEEPER D178  
TAC TORIYANNA F412  
BIEBER TORIYANNA 227Z

BUF CRK HOB0 2595  
DOUBLE FORK 079Z  
BITTERR00T GOLD 25XA  
BASIN ERICA 3380  
BIEBER ROLLIN DEEP Y118  
VF TAMARA A196-545  
LSF TAKEOVER 9943W  
BIEBER TORIYANNA 317W

ACT BW (RATIO) 69 (99)  
ADJ WW (RATIO) 557 (104)  
ADJ YW (RATIO) 1142 (99)  
WDA  
2.83

DAM INFO AGE: 3 MPPA: 102 MATURE WT: 968

PRO	S	HB	GM	CED	BW	WW	YW	MLK	ME	HP	CEM	ST	MB	YG	CW	REA	BF
131	99	33	17	-3.9	54	83	28	0	10	8	20	0.47	0.12	13	0.08	0.05	
25%	10%	63%	7%	14%	72%	76%	24%	45%	76%	20%	5%	33%	82%	75%	53%	97%	

100% AR      ADJ IMF (RATIO) 2.33 (75)      ADJ REA (RATIO) 14.8 (113)



# RED ANGUS BULLS



## Reference Sire

### BIEBER ROLLIN DEEP Y118 1436844

BIEBER ROUGH RIDER 10712  
**BIEBER ROOSEVELT W384**  
 BIEBER SHEBA 9602

BIEBER BOONE 8000  
**BIEBER TILLY 399W**  
 BIEBER TILLY 303S

BASIN TREND SETTER 6074  
 BIEBER ADELLE 8958  
 C A FUTURE DIRECTION 5321  
 BIEBER SHEBA 5537  
 BIEBER BOONE 6927  
 BIEBER QUE 6007  
 RITO 112 OF 2536 RITO 616  
 BIEBER TILLY 7334

PRO	S	HB	GM	CED	BW	WW	YW	MLK	ME	HP	CEM	ST	MB	YG	CW	REA	BF
137	95	41	9	0.0	73	120	29	8	10	7	19	0.42	0.17	37	0.36	0.07	
22%	18%	43%	85%	78%	13%	13%	21%	92%	69%	44%	12%	44%	90%	11%	12%	99%	

## LOTS 3-4 FULL BROTHERS



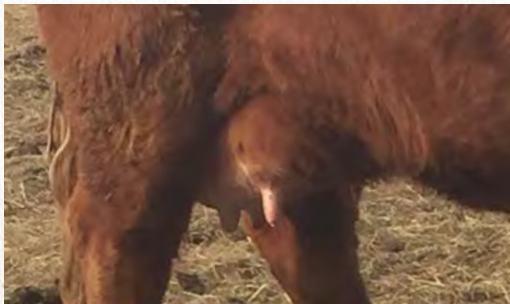
**LOT 3**



**LOT 4**

Rollin Deep cattle are hard to fault and hard to find. Very thick, yet soft made cattle that perform on grass and on feed. Their mother 191 is no stranger to our program having several daughters in herd, plus sons like A191 and Steiger, who we will feature sons next year. She is an amazing female that has a picture-perfect udder that breeds back early each and every year.

A



**TBLC MISS 605 CHEYENNE 191 UDDER AT AGE 10**

*Hard to Fault and Hard to Find!*

**3**

REG  
4392043

DOB  
3/9/20

TATTOO  
H211

CALVING EASE  
★ ★

### TAC ROLLIN DEEP H211 ET

BIEBER ROOSEVELT W384  
**BIEBER ROLLIN DEEP Y118**  
 BIEBER TILLY 399W

TBLC CHEYENNE 605  
**TBLC MISS 605 CHEYENNE 191**  
 TBLC MISS TANK 678

BIEBER ROUGH RIDER 10712  
 BIEBER SHEBA 9602  
 BIEBER BOONE 8000  
 BIEBER TILLY 303S  
 LCC CHEYENNE B221L  
 TBLC FAYET410  
 CRSA 6X  
 TBLC MS COLT 204G 23P

ACT BW	66
ADJ WW	563
ADJ YW	1215
WDA	3.30

ACT BW	78
ADJ WW	552
ADJ YW	1241
WDA	3.36

DAM INFO AGE: 10 MPPA: 107 MATURE WT: 1232

PRO	S	HB	GM	CED	BW	WW	YW	MLK	ME	HP	CEM	ST	MB	YG	CW	REA	BF
124	88	36	10	-0.1	73	113	28	6	10	7	17	0.44	0.16	31	0.16	0.05	
36%	26%	56%	81%	81%	8%	14%	22%	87%	61%	49%	27%	39%	94%	14%	35%	96%	

100% AR

ADJ IMF (RATIO)	2.60 (85)	ADJ REA (RATIO)	13.0 (90)
-----------------	-----------	-----------------	-----------

**4**

REG  
4392041

DOB  
3/9/20

TATTOO  
H210

CALVING EASE  
★ ★

### TAC ROLLIN DEEP H210 ET

BIEBER ROOSEVELT W384  
**BIEBER ROLLIN DEEP Y118**  
 BIEBER TILLY 399W

TBLC CHEYENNE 605  
**TBLC MISS 605 CHEYENNE 191**  
 TBLC MISS TANK 678

BIEBER ROUGH RIDER 10712  
 BIEBER SHEBA 9602  
 BIEBER BOONE 8000  
 BIEBER TILLY 303S  
 LCC CHEYENNE B221L  
 TBLC FAYET410  
 CRSA 6X  
 TBLC MS COLT 204G 23P

ACT BW	78
ADJ WW	552
ADJ YW	1241
WDA	3.36

ACT BW	78
ADJ WW	552
ADJ YW	1241
WDA	3.36

DAM INFO AGE: 10 MPPA: 107 MATURE WT: 1232

PRO	S	HB	GM	CED	BW	WW	YW	MLK	ME	HP	CEM	ST	MB	YG	CW	REA	BF
124	88	36	10	-0.1	73	113	28	6	10	7	17	0.44	0.16	31	0.16	0.05	
36%	26%	56%	81%	81%	8%	14%	22%	87%	61%	49%	27%	39%	94%	14%	35%	96%	

100% AR

ADJ IMF (RATIO)	2.10 (69)	ADJ REA (RATIO)	13.3 (92)
-----------------	-----------	-----------------	-----------

# RED ANGUS BULLS

## Reference Sire



### BIEBER HARD DRIVE Y120 1436718

CCF GOLD BAR 0251  
**LACY GOLD BAR 8123**  
 LACY MS CHEROKEE 557P

LCHMN GOLD ROBBER 1909E  
 GMRA PRINCESS 720  
 BFCK CHEROKEE CNYN 4912  
 LACY MS ANNIE 154M  
 LJC LANCER 806  
 LJC HANNAH 106  
 C A FUTURE DIRECTION 5321  
 BASIN LAURA 3673

PRO S	HB	GM	CED	BW	WW	YW	MLK	ME	HP	CEM	ST	MB	YG	CW	REA	BF
138	45	93	12	-1.4	82	132	23	12	9	5	12	0.78	-0.15	46	0.73	-0.03
21%	94%	2%	51%	55%	4%	5%	67%	98%	82%	78%	84%	4%	3%	4%	2%	3%

## LOTS 5-7 FULL BROTHERS

Full brothers that check every box for carcass traits and growth not to mention the maternal power behind them. What the Laura cow family has done for the Bieber program is quite impressive. 191 has been a maternal matron to our program and her son A191 has left us many daughters and several sons out working for our customers. Hard Drive females are very dual purposed, possessing great carcass, feet, and udders.

A

### 5

#### TAC HARD DRIVE H203 ET

REG  
4392187

DOB  
3/8/20

TATTOO  
H203

LACY GOLD BAR 8123  
**BIEBER HARD DRIVE Y120**  
 BIEBER LAURA 158W

TBLC CHEYENNE 605  
**TBLC MISS 605 CHEYENNE 191**  
 TBLC MISS TANK 678

CCF GOLD BAR 0251  
 LACY MS CHEROKEE 557P  
 LJC MISSION STATEMENT P27  
 BASIN LAURA 5301  
 LCC CHEYENNE B221L  
 TBLC FAYET410  
 CRSA 6X  
 TBLC MS COLT 204G 23P

ACT BW	78
ADJ WW	536
ADJ YW	1214
WDA	3.28

CALVING EASE  
★★★★

DAM INFO AGE: 10 MPPA: 107 MATURE WT: 1232

PRO S	HB	GM	CED	BW	WW	YW	MLK	ME	HP	CEM	ST	MB	YG	CW	REA	BF
126	63	63	12	-0.8	77	119	25	8	10	6	14	0.62	0.00	36	0.34	0.00
34%	81%	9%	59%	69%	4%	8%	48%	95%	73%	73%	73%	10%	19%	7%	10%	14%

100% AR      ADJ IMF (RATIO) 2.74 (102)      ADJ REA (RATIO) 14.1 (106)



LOT 7

### 6

#### TAC HARD DRIVE H132 ET

REG  
4392081

DOB  
3/3/20

TATTOO  
H132

LACY GOLD BAR 8123  
**BIEBER HARD DRIVE Y120**  
 BIEBER LAURA 158W

TBLC CHEYENNE 605  
**TBLC MISS 605 CHEYENNE 191**  
 TBLC MISS TANK 678

CCF GOLD BAR 0251  
 LACY MS CHEROKEE 557P  
 LJC MISSION STATEMENT P27  
 BASIN LAURA 5301  
 LCC CHEYENNE B221L  
 TBLC FAYET410  
 CRSA 6X  
 TBLC MS COLT 204G 23P

ACT BW	75
ADJ WW	579
ADJ YW	1199
WDA	3.24

CALVING EASE  
★★★★

DAM INFO AGE: 10 MPPA: 107 MATURE WT: 1232

PRO S	HB	GM	CED	BW	WW	YW	MLK	ME	HP	CEM	ST	MB	YG	CW	REA	BF
126	63	63	12	-0.8	77	119	25	8	10	6	14	0.62	0.00	36	0.34	0.00
34%	81%	9%	59%	69%	4%	8%	48%	95%	73%	73%	73%	10%	19%	7%	10%	14%

100% AR      ADJ IMF (RATIO) 2.82 (105)      ADJ REA (RATIO) 13.6 (103)

### 7

#### TAC HARD DRIVE H224 ET

REG  
4392097

DOB  
3/11/20

TATTOO  
H224

LACY GOLD BAR 8123  
**BIEBER HARD DRIVE Y120**  
 BIEBER LAURA 158W

TBLC CHEYENNE 605  
**TBLC MISS 605 CHEYENNE 191**  
 TBLC MISS TANK 678

CCF GOLD BAR 0251  
 LACY MS CHEROKEE 557P  
 LJC MISSION STATEMENT P27  
 BASIN LAURA 5301  
 LCC CHEYENNE B221L  
 TBLC FAYET410  
 CRSA 6X  
 TBLC MS COLT 204G 23P

ACT BW	82
ADJ WW	601
ADJ YW	1275
WDA	3.48

CALVING EASE  
★★★★

DAM INFO AGE: 10 MPPA: 107 MATURE WT: 1232

PRO S	HB	GM	CED	BW	WW	YW	MLK	ME	HP	CEM	ST	MB	YG	CW	REA	BF
126	63	63	12	-0.8	77	119	25	8	10	6	14	0.62	0.00	36	0.34	0.00
34%	81%	9%	59%	69%	4%	8%	48%	95%	73%	73%	73%	10%	19%	7%	10%	14%

100% AR      ADJ IMF (RATIO) 3.36 (110)      ADJ REA (RATIO) 13.4 (93)



# RED ANGUS BULLS

## Reference Site

### BASIN PAYWEIGHT PLUS 6048 18511911

Basin Payweight 006S  
**Basin Payweight 1682**  
 21AR O Lass 7017

Connealy Consensus 7229  
**EXAR Royal Lass 2810**  
 Exar Royal Lass 1067

Vermilion Payweight J847  
 Basin Lucy 3829  
 HARB Pendleton 765 J H  
 21AR O Lass F24A  
 Connealy Consensus  
 Blue Lilly of Conanga 16  
 EXAR 263C  
 BR Royal Lass 19-132

CED	BW	WW	YW	MLK	SEN	CW	MB	RE	FAT	SM	SW	SF	SG	SB	SC
15	-1.6	70	127	29	-17	47	0.82	0.46	0.058	75	93	88	54	142	259
3%	10%	15%	15%	1%	60%	35%	20%	60%	95%	10%	1%	40%	25%	35%	20%



## LOTS 8-9 FULL BROTHERS

Payweight Plus has been one of the most consistent Angus bulls we have used. He has exceptional calving ease and calf vigor. Tremendous early growth and carcass merit, all while making females that are easy fleshing, heavy milking momma cows with great udder suspension and teat size. If there was another box to check, check it for me please, because he covers it also. These Payweight Plus sons are the real deal.



**LOT 8**



**LOT 10**

**8**  
REG  
4392051  
DOB  
3/4/20  
TATTOO  
H154  
CALVING EASE  
★★★★

### TAC PAYWEIGHT PLUS H154 ET

BASIN PAYWEIGHT 1682  
**BASIN PAYWEIGHT PLUS 6048**  
 EXAR ROYAL LASS 2810

RIDGE ENHANCED 1124  
**KLEIN SANDY 331A**  
 RRA SANDY 891 050

BASIN PAYWEIGHT 006S  
 21AR O LASS 7017  
 CONNEALY CONSENSUS 7229  
 EXAR ROYAL LASS 1067  
 RIDGE ENHANCED 9002  
 RIDGE SHEILA 009-217  
 5L SIGNATURE 2846-266V  
 RRA SANDY 519 891

ACT BW	88
ADJ WW	652
ADJ YW	1362
WDA	3.69

ACT BW (RATIO)	73 (98)
ADJ WW (RATIO)	623 (116)
ADJ YW (RATIO)	1355 (117)
WDA	3.48

**DAM INFO** AGE: 8 MPPA: 98

PRO S	HB	GM	CED	BW	WW	YW	MLK	ME	HP	CEM	ST	MB	YG	CW	REA	BF
157	87	70	16	-2.0	77	127	24	-4	12	10	12	0.52	0.22	46	0.26	0.06
4%	29%	5%	8%	45%	4%	3%	63%	20%	29%	5%	84%	24%	99%	1%	18%	99%

**100% AR**      **ADJ IMF (RATIO)** 3.05 (100)      **ADJ REA (RATIO)** 16.3 (113)

**10**  
REG  
4392121  
DOB  
2/19/20  
TATTOO  
H11  
CALVING EASE  
★★★★

### TAC PAYWEIGHT PLUS H11

BASIN PAYWEIGHT 1682  
**BASIN PAYWEIGHT PLUS 6048**  
 EXAR ROYAL LASS 2810

3J ONE OF A KIND A228  
**KLEIN MISS MAC 504-704E**  
 KLEIN MISS MAC 311-504C

BASIN PAYWEIGHT 006S  
 21AR O LASS 7017  
 CONNEALY CONSENSUS 7229  
 EXAR ROYAL LASS 1067  
 BUF CRK THE RIGHT KIND U199  
 BADLANDS CEDAR 922  
 RED SSS OLY 554T  
 KLEIN MISS MAC 311A

ACT BW (RATIO)	73 (98)
ADJ WW (RATIO)	623 (116)
ADJ YW (RATIO)	1355 (117)
WDA	3.48

ACT BW (RATIO)	73 (98)
ADJ WW (RATIO)	623 (116)
ADJ YW (RATIO)	1355 (117)
WDA	3.48

**DAM INFO** AGE: 4 MPPA: 106 MATURE WT: 1248

PRO S	HB	GM	CED	BW	WW	YW	MLK	ME	HP	CEM	ST	MB	YG	CW	REA	BF
179	94	85	17	-3.3	83	143	28	-5	12	10	13	0.59	0.23	49	0.17	0.05
1%	17%	1%	5%	22%	1%	1%	24%	18%	37%	5%	78%	13%	99%	1%	32%	96%

**100% AR**      **ADJ IMF (RATIO)** 4.99 (161)      **ADJ REA (RATIO)** 14.1 (108)

**9**  
REG  
4392071  
DOB  
3/5/20  
TATTOO  
H198  
CALVING EASE  
★★★★

### TAC PAYWEIGHT PLUS H198 ET

BASIN PAYWEIGHT 1682  
**BASIN PAYWEIGHT PLUS 6048**  
 EXAR ROYAL LASS 2810

RIDGE ENHANCED 1124  
**KLEIN SANDY 331A**  
 RRA SANDY 891 050

BASIN PAYWEIGHT 006S  
 21AR O LASS 7017  
 CONNEALY CONSENSUS 7229  
 EXAR ROYAL LASS 1067  
 RIDGE ENHANCED 9002  
 RIDGE SHEILA 009-217  
 5L SIGNATURE 2846-266V  
 RRA SANDY 519 891

ACT BW	87
ADJ WW	563
ADJ YW	1197
WDA	3.25

ACT BW (RATIO)	73 (98)
ADJ WW (RATIO)	623 (116)
ADJ YW (RATIO)	1355 (117)
WDA	3.48

**DAM INFO** AGE: 8 MPPA: 98

PRO S	HB	GM	CED	BW	WW	YW	MLK	ME	HP	CEM	ST	MB	YG	CW	REA	BF
157	87	70	16	-2.0	77	127	24	-4	12	10	12	0.52	0.22	46	0.26	0.06
4%	29%	5%	8%	45%	4%	3%	63%	20%	29%	5%	84%	24%	99%	1%	18%	99%

**100% AR**      **ADJ IMF (RATIO)** 3.08 (101)      **ADJ REA (RATIO)** 15.7 (109)



# RED ANGUS BULLS



## Reference Sire

### BROOKING BANK NOTE 4040 18069951

Connealy Consensus  
**Connealy Earnan 076E**  
 Brazila of Conanga 3991 839A

KMK Alliance 6595 187  
 Blinda of Conanga 004  
 Connealy Tobin  
 Breesha of Conanga 1251  
 Sitz Traveler 8180  
 S A V Emulous 8145  
 Sitz Tradition RLS 8702  
 M A S Bando Rose 4536

S A V Final Answer 0035

**E A Rose 918**  
 E A Rose 738

CED	BW	WW	YW	MLK	SEN	CW	MB	RE	FAT	SM	SW	SF	\$G	\$B	\$C
2	2.9	69	115	10	4	33	0.40	0.48	0.020	53	51	70	38	109	194
80%	85%	20%	30%	95%	15%	70%	60%	60%	65%	55%	65%	80%	60%	80%	80%

## LOTS 10-11 FULL BROTHERS



**LOT 11**

501W has done it again. Try to find another that combines these genetics, let alone a red one. H139 has been a standout since day one. Bank Note has been siring some truly amazing females up north for Brookings. They are awesome structured, true footed cattle that cover some ground. 501W was the obvious choice in our program to mate him to. Soggy, easy keeping female that has contributed a lot to our program. You decide which one is better, black or red.



**LOT 12**

## Reference Dam



**SDCC MARIGOLD 501W**

*Red or Black...which one is better?*

**11**  
REG  
4392045  
DOB  
3/3/20  
TATTOO  
H139  
CALVING EASE  
★★★

**TAC BANK NOTE H139 ET**

CONNEALY EARNAN 076E  
**BROOKING BANK NOTE 4040**  
 E A ROSE 918

RED HILL B571 JULIAN 84S  
**SDCC MARIGOLD 501W**  
 BUF CRK MARIGOLD T132

CONNEALY CONSENSUS  
 BRAZILA OF CONANGA 3991  
 S A V FINAL ANSWER 0035  
 E A ROSE 738  
 BECKTON JULIAN GG B571  
 BECKTON BARMAID M554 CH  
 BFCK CHEROKEE CNYN 4912  
 BUF CRK MARIGOLD 6068

ACT BW	87
ADJ WW	608
ADJ YW	1128
WDA	3.09

PRO S HB GM CED BW WW YW MLK ME HP CEM ST MB YG CW REA BF

105 84 22 13 -2.4 68 104 18 -7 9 8 14 0.28 0.05 21 0.25 0.03

68% 37% 84% 41% 37% 18% 30% 95% 10% 79% 25% 70% 79% 48% 44% 19% 83%

**100% AR**      **ADJ IMF (RATIO) 3.03 (100)**      **ADJ REA (RATIO) 14.0 (97)**

**12**  
REG  
4392073  
DOB  
2/27/20  
TATTOO  
H73  
CALVING EASE  
★★★

**TAC BANK NOTE H73**

CONNEALY EARNAN 076E  
**BROOKING BANK NOTE 4040**  
 E A ROSE 918

RED HILL B571 JULIAN 84S  
**SDCC MARIGOLD 501W**  
 BUF CRK MARIGOLD T132

CONNEALY CONSENSUS  
 BRAZILA OF CONANGA 3991  
 S A V FINAL ANSWER 0035  
 E A ROSE 738  
 BECKTON JULIAN GG B571  
 BECKTON BARMAID M554 CH  
 BFCK CHEROKEE CNYN 4912  
 BUF CRK MARIGOLD 6068

ACT BW	88
ADJ WW	558
ADJ YW	1155
WDA	3.12

PRO S HB GM CED BW WW YW MLK ME HP CEM ST MB YG CW REA BF

105 84 22 13 -2.4 68 104 18 -7 9 8 14 0.28 0.05 21 0.25 0.03

68% 37% 84% 41% 37% 18% 30% 95% 10% 79% 25% 70% 79% 48% 44% 19% 83%

**100% AR**      **ADJ IMF (RATIO) 2.52 (83)**      **ADJ REA (RATIO) 13.6 (95)**

# RED ANGUS BULLS



## Reference Sire

### TAC BLOCKADE E66 3854621

5L DEFENDER 560-30Z  
**5L BLOCKADE 2218-30B**  
 5L OPAL 656-2218

BIEBER HARD DRIVE Y120  
**3SCC VERNA B47**  
 3SCC VERNA U105

5L ADVOCATE 817-14W  
 5L BLACK ADINA 525-560  
 O C C PROTOTYPE 847P  
 5L OPAL 0052-656  
 LACY GOLD BAR 8123  
 BIEBER LAURA 158W  
 BASIN TREND SETTER 45S5  
 3SCC VERNA S154

PRO	S	HB	GM	CED	BW	WW	YW	MLK	ME	HP	CEM	ST	MB	YG	CW	REA	BF
149	71	78	12	-1.6	70	112	20	4	9	4	17	0.77	-0.09	41	0.62	-0.01	
12%	64%	4%	52%	52%	19%	22%	83%	69%	80%	86%	33%	5%	5%	8%	3%	7%	



**LOT 13**

A

**13**

### TAC BLOCKADE H153



### TAC BLOCKADE E66 SIRE GROUP

REG 4392153	5L BLOCKADE 2218-30B	5L DEFENDER 560-30Z	<b>ACT BW (RATIO)</b>														
DOB 3/4/20	<b>TAC BLOCKADE E66</b>	5L OPAL 656-2218	87 (118)														
TATTOO H153	3SCC VERNA B47	BIEBER HARD DRIVE Y120	<b>ADJ WW (RATIO)</b>														
CALVING EASE ★★★	TAC MATERNAL MADE Z30	3SCC VERNA U105	544 (101)														
DAM INFO	<b>TAC MAGGIE E382</b>	BUF CRK THE RIGHT KIND U199	<b>ADJ YW (RATIO)</b>														
AGE: 4	TAC MAGGIE B172	RIDGE AQUILA 836-456	1226 (106)														
MPPA: 100		SDCC JACKHAMMER 734Y	<b>WDA</b>														
MATURE WT: 1234		3SCC MAGGIE W172	3.16														
PRO	S	HB	GM	CED	BW	WW	YW	MLK	ME	HP	CEM	ST	MB	YG	CW	REA	BF
131	71	60	9	0.6	72	115	19	1	10	4	16	0.58	0.03	32	0.26	0.00	
26%	68%	11%	91%	89%	10%	12%	92%	54%	78%	95%	43%	15%	33%	11%	18%	24%	

E66 is giving his daddy, Blockade, a run for his money with the way these cattle convert and the consistency in marbling he puts on the table. Backed by one of the best cows on the place, Verna B47. She is truly the best structured, most eye appealing Hard Drive female I have laid my eyes on. Maternal granddam of Lot 1. If you sell cattle on the grid, these bulls need a good look! They all ratioed an average IMF of 129.

*Average IMF ratio of 129!*

# RED ANGUS BULLS



**LOT 14**



**LOT 15**

**14 TAC BLOCKADE H119**

REG 4392165  
DOB 3/2/20  
TATTOO H119  
CALVING EASE ★★

5L BLOCKADE 2218-30B  
**TAC BLOCKADE E66**  
3SCC VERNA B47

LARSON CATALYST 153  
**3SCC GINGER A339**  
2RJL MISS HI DYNAMICS R580

5L DEFENDER 560-30Z  
5L OPAL 656-2218  
BIEBER HARD DRIVE Y120  
3SCC VERNA U105  
VGW BASES LOADED 905  
LARSON MARIE 768-185  
BR HI HO 239  
SCC MISS DYNAMIC SAGEGIRL236

**ACT BW (RATIO) 76 (98)**  
**ADJ WW (RATIO) 575 (107)**  
**ADJ YW (RATIO) 1235 (107)**  
**WDA 3.32**

DAM INFO AGE: 8 MPPA: 99 MATURE WT: 1282

PRO	S	HB	GM	CED	BW	WW	YW	MLK	ME	HP	CEM	ST	MB	YG	CW	REA	BF
122	60	62	10	-1.3	66	110	21	2	9	2	17	0.48	-0.13	26	0.50	-0.02	
40%	85%	10%	78%	58%	24%	19%	83%	58%	86%	99%	31%	31%	2%	25%	3%	3%	

**100% AR**      **ADJ IMF (RATIO) 3.27 (105)**      **ADJ REA (RATIO) 12.6 (96)**

**15 TAC BLOCKADE H90**

REG 4392141  
DOB 2/29/20  
TATTOO H90  
CALVING EASE ★★

5L BLOCKADE 2218-30B  
**TAC BLOCKADE E66**  
3SCC VERNA B47

BIEBER ROLLIN DEEP Y118  
**TAC SISSY A5 R**  
BASIN OPAL 7385

5L DEFENDER 560-30Z  
5L OPAL 656-2218  
BIEBER HARD DRIVE Y120  
3SCC VERNA U105  
BIEBER ROOSEVELT W384  
BIEBER TILLY 399W  
BASIN CHEROKEE 5856  
BASIN OPAL 3898

**ACT BW (RATIO) 67 (87)**  
**ADJ WW (RATIO) 556 (104)**  
**ADJ YW (RATIO) 1177 (102)**  
**WDA 3.17**

DAM INFO AGE: 8 MPPA: 102 MATURE WT: 1418

PRO	S	HB	GM	CED	BW	WW	YW	MLK	ME	HP	CEM	ST	MB	YG	CW	REA	BF
156	98	58	15	-3.9	64	102	24	0	11	8	18	0.58	0.02	34	0.42	0.02	
5%	11%	14%	14%	14%	30%	34%	61%	41%	61%	31%	13%	15%	29%	9%	5%	64%	

**100% AR**      **ADJ IMF (RATIO) 3.54 (114)**      **ADJ REA (RATIO) 13.5 (103)**

A



*Reference Grand Dam*

**3SCC VERNA B47 - DAM OF E66**

**16 TAC BLOCKADE H48**

REG 4392085  
DOB 2/25/20  
TATTOO H48  
CALVING EASE ★★

5L BLOCKADE 2218-30B  
**TAC BLOCKADE E66**  
3SCC VERNA B47

BROWN RED OAK A7639  
**TAC RUBY E396**  
JAG RUBY 914W

5L DEFENDER 560-30Z  
5L OPAL 656-2218  
BIEBER HARD DRIVE Y120  
3SCC VERNA U105  
HUST CHIEF SEQUOYA R336  
BROWN MS P707 Y7686  
BROWN COMMITMENT S7206  
LONE ROCK MS ESSEX 376

**ACT BW (RATIO) 76 (103)**  
**ADJ WW (RATIO) 555 (103)**  
**ADJ YW (RATIO) 1232 (106)**  
**WDA 3.15**

DAM INFO AGE: 4 MPPA: 103 MATURE WT: 1054

PRO	S	HB	GM	CED	BW	WW	YW	MLK	ME	HP	CEM	ST	MB	YG	CW	REA	BF
144	81	63	14	-2.8	65	102	25	1	9	5	18	0.74	0.04	26	0.17	0.01	
11%	42%	9%	34%	30%	27%	34%	50%	53%	84%	82%	17%	3%	39%	27%	32%	31%	

**100% AR**      **ADJ IMF (RATIO) 4.70 (151)**      **ADJ REA (RATIO) 12.6 (96)**



*Reference Sire*

**RED SSS AMBUSH 771X 1641717**

- RED SVR AMBUSH 59P
- RED FLYING K AMBUSH 121U**
- RED FLYING K BEAUTY 40R
- RED SSS SHIVER'N JOE 699P
- RED SSS JOE 369S**
- RED SSS KURUBA 842L
- RED YY RED KNIGHT 640F
- RED SOUTH VIEW JINNY 26C
- RED PATRIOT 629
- RED FLYING K LAKOTA 48N
- LARSON RED LIGHTNING
- RED SSS SOAPY 770L
- SSS BOOMER 803B
- RED SSS KURUBA 622F

PRO	S	HB	GM	CED	BW	WW	YW	MLK	ME	HP	CEM	ST	MB	YG	CW	REA	BF
135	109	27	11	1.2	56	89	28	-14	9	6	19	0.34	0.05	13	-0.13	-0.00	
24%	5%	69%	66%	91%	66%	66%	22%	4%	76%	71%	8%	61%	44%	72%	87%	14%	

# RED ANGUS BULLS



**LOT 17**

A

## AMBUSH 771X SIRE GROUP

Ambush is a maternal Canadian sire we sampled that surprised me with how much growth they have. Very limited semen sold in the US. Lot 17 is the #2 WW, #1 YW, and #3 REA of the Red Angus division. He is also the biggest framed. These brothers have the growth and the maternal - take a look at their STAY and ME EPDs!

*Growth and Maternal!*

### 18 TAC AMBUSH H165

REG  
4392101  
DOB  
3/5/20  
TATTOO  
H165

RED FLYING K AMBUSH 121U  
**RED SSS AMBUSH 771X**  
RED SSS JOE 369S  
LSF TAKEOVER 9943W  
**TAC A132**  
TBLC MISS 605 CHEYENNE 132

RED SVR AMBUSH 59P  
RED FLYING K BEAUTY 40R  
RED SSS SHIVER'N JOE 699P  
RED SSS KURUBA 842L  
HXC CONQUEST 4405P  
LSF WIDELOAD R5014 U8061  
TBLC CHEYENNE 605  
TBLC MISS TANK 749

**ACT BW (RATIO)**  
76 (98)  
**ADJ WW (RATIO)**  
505 (94)  
**ADJ YW (RATIO)**  
1071 (93)  
**WDA**  
2.90

CALVING EASE		DAM INFO															
★ ★		AGE: 8	MPPA: 101	MATURE WT: 1466													
PRO	S	HB	GM	CED	BW	WW	YW	MLK	ME	HP	CEM	ST	MB	YG	CW	REA	BF
123	96	26	14	-1.5	54	82	28	-6	12	7	18	0.51	0.07	5	-0.18	0.01	
39%	13%	77%	30%	55%	71%	77%	26%	15%	41%	45%	19%	25%	60%	93%	96%	38%	
<b>100% AR</b>		<b>ADJ IMF (RATIO)</b>			3.00 (97)			<b>ADJ REA (RATIO)</b>			11.7 (90)						

### 17 TAC REFUGE H60



REG  
4392067  
DOB  
2/26/20  
TATTOO  
H60

RED FLYING K AMBUSH 121U  
**RED SSS AMBUSH 771X**  
RED SSS JOE 369S  
3SCC NET GAIN B615  
**TAC MS TORYANNA D379**  
BIEBER TORYANNA 227Z

RED SVR AMBUSH 59P  
RED FLYING K BEAUTY 40R  
RED SSS SHIVER'N JOE 699P  
RED SSS KURUBA 842L  
JACOBSON WORTH 1066  
3SCC LINDA X622  
LSF TAKEOVER 9943W  
BIEBER TORYANNA 317W

**ACT BW (RATIO)**  
97 (128)  
**ADJ WW (RATIO)**  
643 (120)  
**ADJ YW (RATIO)**  
1418 (123)  
**WDA**  
3.72

CALVING EASE		DAM INFO															
★		AGE: 5	MPPA: 105	MATURE WT: 1316													
PRO	S	HB	GM	CED	BW	WW	YW	MLK	ME	HP	CEM	ST	MB	YG	CW	REA	BF
175	114	61	10	1.7	77	130	30	-8	11	5	19	0.37	0.09	36	0.19	0.01	
1%	1%	10%	85%	96%	4%	2%	12%	7%	45%	87%	6%	56%	72%	6%	29%	48%	
<b>100% AR</b>		<b>ADJ IMF (RATIO)</b>			2.80 (90)			<b>ADJ REA (RATIO)</b>			15.7 (120)						

### 19 TAC AMBUSH H187

REG  
4392163  
DOB  
3/6/20  
TATTOO  
H187

RED FLYING K AMBUSH 121U  
**RED SSS AMBUSH 771X**  
RED SSS JOE 369S  
BASIN CHEROKEE 5856  
**BASIN OPAL 7385**  
BASIN OPAL 3898

RED SVR AMBUSH 59P  
RED FLYING K BEAUTY 40R  
RED SSS SHIVER'N JOE 699P  
RED SSS KURUBA 842L  
BFCK CHEROKEE CNYN 4912  
BASIN INDIGO H680  
BASIN HOB0 79E  
SODAK OPAL H8123

**ACT BW (RATIO)**  
96 (125)  
**ADJ WW (RATIO)**  
634 (118)  
**ADJ YW (RATIO)**  
1273 (110)  
**WDA**  
3.41

CALVING EASE		DAM INFO															
★		AGE: 13	MPPA: 107	MATURE WT: 1434													
PRO	S	HB	GM	CED	BW	WW	YW	MLK	ME	HP	CEM	ST	MB	YG	CW	REA	BF
156	121	35	12	0.7	66	102	28	-11	11	5	21	0.37	0.08	22	0.06	0.02	
5%	1%	58%	64%	90%	25%	34%	24%	2%	52%	79%	2%	56%	62%	41%	58%	51%	
<b>100% AR</b>		<b>ADJ IMF (RATIO)</b>			2.82 (91)			<b>ADJ REA (RATIO)</b>			15.9 (121)						

# RED ANGUS BULLS



## Reference Sire

### 5L PERFECT STORM 1201-172D 3570473

5L DEFENDER 560-30Z  
**5L THE REAL DEAL 1687-143B**  
 5L FIREFLY 275-1687

BUF CRK THE RIGHT KIND U199  
**5L RUBY 829-1201**  
 5L RUBY 162-829

5L ADVOCATE 817-14W  
 5L BLACK ADINA 525-560  
 5L DESTINATION 893-6215  
 5L FIREFLY 2573-275  
 BUF CRK LANCER R017  
 BUF CRK SHOSHONE R353  
 5L NORSEMAN KING 2291  
 5L RUBY 630-162

PRO	S	HB	GM	CED	BW	WW	YW	MLK	ME	HP	CEM	ST	MB	YG	CW	REA	BF
132	71	61	14	-2.2	55	94	23	2	12	9	13	0.47	-0.02	30	0.30	-0.00	
27%	63%	15%	27%	41%	69%	56%	65%	57%	42%	13%	76%	35%	16%	22%	17%	11%	



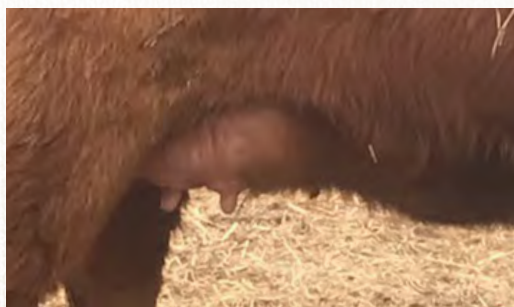
**LOT 20**

## LOTS 20-21 FULL BROTHERS

The Perfect Storm daughters are some of the best females on the ranch. Heavy milking, picture perfect udders with a phenomenal maternal instinct. Add 501W and you get a consistent group of cattle that are easy calving, soft made easy keepers.



**LOT 21**



PERFECT STORM DAUGHTER'S UDDER

Perfect Storm daughters are some of the best females on the ranch!

### 20 TAC PERFECT STORM H78 ET

REG  
4392189

DOB  
2/28/20

TATTOO  
H78

CALVING EASE  
★★★★

5L THE REAL DEAL 1687-143B  
**5L PERFECT STORM 1201-172D**  
 5L RUBY 829-1201

RED HILL B571 JULIAN 84S  
**SDCC MARIGOLD 501W**  
 BUF CRK MARIGOLD T132

5L DEFENDER 560-30Z  
 5L FIREFLY 275-1687  
 BUF CRK THE RIGHT KIND U199  
 5L RUBY 162-829  
 BECKTON JULIAN GG B571  
 BECKTON BARMAID M554 CH  
 BFCK CHEROKEE CNYN 4912  
 BUF CRK MARIGOLD 6068

ACT BW	73
ADJ WW	512
ADJ YW	1186
WDA	
3.17	

DAM INFO AGE: 11 MPPA: 98

PRO	S	HB	GM	CED	BW	WW	YW	MLK	ME	HP	CEM	ST	MB	YG	CW	REA	BF
100	74	26	15	-3.7	52	82	26	-2	9	8	16	0.26	-0.04	12	0.22	0.01	
76%	59%	78%	15%	17%	76%	77%	39%	31%	90%	28%	48%	84%	9%	79%	24%	26%	

100% AR

ADJ IMF (RATIO) 3.87 (127) ADJ REA (RATIO) 14.9 (103)

### 21 TAC PERFECT STORM H85 ET

REG  
4392105

DOB  
2/28/20

TATTOO  
H85

CALVING EASE  
★★★★

5L THE REAL DEAL 1687-143B  
**5L PERFECT STORM 1201-172D**  
 5L RUBY 829-1201

RED HILL B571 JULIAN 84S  
**SDCC MARIGOLD 501W**  
 BUF CRK MARIGOLD T132

5L DEFENDER 560-30Z  
 5L FIREFLY 275-1687  
 BUF CRK THE RIGHT KIND U199  
 5L RUBY 162-829  
 BECKTON JULIAN GG B571  
 BECKTON BARMAID M554 CH  
 BFCK CHEROKEE CNYN 4912  
 BUF CRK MARIGOLD 6068

ACT BW	76
ADJ WW	540
ADJ YW	1162
WDA	
3.13	

DAM INFO AGE: 11 MPPA: 98

PRO	S	HB	GM	CED	BW	WW	YW	MLK	ME	HP	CEM	ST	MB	YG	CW	REA	BF
81	61	20	15	-4.7	62	92	29	-2	9	5	15	0.37	0.04	8	0.17	0.04	
94%	83%	87%	22%	7%	41%	58%	15%	31%	90%	85%	61%	56%	41%	89%	32%	92%	

100% AR

ADJ IMF (RATIO) 3.36 (110) ADJ REA (RATIO) 14.6 (101)



# RED ANGUS BULLS

## Reference Sire



### 5L BOURNE 117-48A 1627789

BUF CRK THE RIGHT KIND U199  
**5L ADVANTAGE 3267-221Y**  
 5L ADINA 195-3267  
  
 5L SIGNATURE 5615  
**5L ROXIE 854-117**  
 XXX ROXIE 854 MR  
  
 BUF CRK LANCER R017  
 BUF CRK SHOSHONE R353  
 5L TRADITION 203-6145  
 5L ADINA 2113-195  
 5L NORSEMAN KING 2291  
 5L RUBY 199-01  
 XXX SUN FIRE 3136 HC  
 XXX ROXIE 040 MR

PRO	S	HB	GM	CED	BW	WW	YW	MLK	ME	HP	CEM	ST	MB	YG	CW	REA	BF
127	80	47	13	-4.0	74	114	29	-2	25	4	11	0.68	0.14	22	0.19	0.06	
3%	45%	33%	40%	16%	12%	19%	18%	34%	1%	92%	89%	10%	83%	42%	30%	98%	



**LOT 22**

## LOTS 22-23 FULL BROTHERS

Full sibs to Rebourne. These cattle flat out perform, all in a moderate package. Crazy birth to yearling spread. Lot 22 was the first of the 4 brothers in REA with a modest birth weight and one of the heaviest yearling weights. We have several daughters in herd that are full sibs doing a great job, but 1 in 10 will have a larger teat size than desired.



**LOT 23**

### Reference Dam



**SDCC MARIGOLD 501W**

Performance  
 in a moderate package!

22	TAC BOURNE H65	ACT BW
REG 4392183	5L ADVANTAGE 3267-221Y	76
DOB 2/27/20	<b>5L BOURNE 117-48A</b>	ADJ WW 604
TATTOO H65	5L ROXIE 854-117	ADJ YW 1198
CALVING EASE ★★★	RED HILL B571 JULIAN 84S	WDA 3.24
	<b>SDCC MARIGOLD 501W</b>	
	BUF CRK MARIGOLD T132	
	BUF CRK THE RIGHT KIND U199	
	5L ADINA 195-3267	
	5L SIGNATURE 5615	
	XXX ROXIE 854 MR	
	BECKTON JULIAN GG B571	
	BECKTON BARMAID M554 CH	
	BFCK CHEROKEE CNYN 4912	
	BUF CRK MARIGOLD 6068	
	<b>DAM INFO AGE: 11 MPPA: 98</b>	
	PRO S HB GM CED BW WW YW MLK ME HP CEM ST MB YG CW REA BF	
	99 79 20 15 -4.7 62 92 29 -3 15 5 15 0.37 0.04 8 0.17 0.04	
	78% 49% 86% 22% 7% 41% 58% 15% 23% 6% 85% 61% 56% 41% 89% 32% 92%	
	<b>100% AR</b>	
	ADJ IMF (RATIO) 2.72 (101)	ADJ REA (RATIO) 14.8 (112)

23	TAC BOURNE H147	ACT BW
REG 4392049	5L ADVANTAGE 3267-221Y	88
DOB 3/4/20	<b>5L BOURNE 117-48A</b>	ADJ WW 606
TATTOO H147	5L ROXIE 854-117	ADJ YW 1143
CALVING EASE ★★★	RED HILL B571 JULIAN 84S	WDA 3.13
	<b>SDCC MARIGOLD 501W</b>	
	BUF CRK MARIGOLD T132	
	BUF CRK THE RIGHT KIND U199	
	5L ADINA 195-3267	
	5L SIGNATURE 5615	
	XXX ROXIE 854 MR	
	BECKTON JULIAN GG B571	
	BECKTON BARMAID M554 CH	
	BFCK CHEROKEE CNYN 4912	
	BUF CRK MARIGOLD 6068	
	<b>DAM INFO AGE: 11 MPPA: 98</b>	
	PRO S HB GM CED BW WW YW MLK ME HP CEM ST MB YG CW REA BF	
	99 79 20 15 -4.7 62 92 29 -3 15 5 15 0.37 0.04 8 0.17 0.04	
	78% 49% 86% 22% 7% 41% 58% 15% 23% 6% 85% 61% 56% 41% 89% 32% 92%	
	<b>100% AR</b>	
	ADJ IMF (RATIO) 3.53 (116)	ADJ REA (RATIO) 15.0 (104)

# RED ANGUS BULLS



**24 TAC BOURNE H190**

REG 4392155  
DOB 3/7/20  
TATTOO H190

5L ADVANTAGE 3267-221Y  
5L BOURNE 117-48A  
5L ROXIE 854-117

BASIN EXT W103  
TAC FLOWER Z4  
BIEBER FLOWER 10383

BUF CRK THE RIGHT KIND U199  
5L ADINA 195-3267  
5L SIGNATURE 5615  
XXX ROXIE 854 MR  
BASIN EXT 6359  
BASIN LAURIE 0515  
LSF COMBINATION A301M  
BIEBER FLOWER 8670

ACT BW (RATIO) 79 (102)  
ADJ WW (RATIO) 603 (112)  
ADJ YW (RATIO) 1326 (115)  
WDA  
3.57

CALVING EASE ★★  
DAM INFO AGE: 9 MPPA: 107 MATURE WT: 1428

PRO	S	HB	GM	CED	BW	WW	YW	MLK	ME	HP	CEM	ST	MB	YG	CW	REA	BF
133	76	57	9	-1.0	78	127	28	5	19	4	12	0.51	0.11	33	0.35	0.05	
23%	56%	15%	91%	65%	3%	1%	21%	83%	1%	93%	84%	25%	82%	10%	9%	98%	

100% AR      ADJ IMF (RATIO) 2.86 (92)      ADJ REA (RATIO) 15.0 (114)

**25 TAC BOURNE H116**

REG 4392115  
DOB 3/1/20  
TATTOO H116

5L ADVANTAGE 3267-221Y  
5L BOURNE 117-48A  
5L ROXIE 854-117

BROWN RED OAK A7639  
TAC MS JUDGE D356  
TBLC MISS 90 JUDGE 149

BUF CRK THE RIGHT KIND U199  
5L ADINA 195-3267  
5L SIGNATURE 5615  
XXX ROXIE 854 MR  
HUST CHIEF SEQUOYA R336  
BROWN MS P707 Y7686  
TBLC JUDGE 90  
TBLC MISS TANK 980

ACT BW (RATIO) 73 (97)  
ADJ WW (RATIO) 518 (96)  
ADJ YW (RATIO) 1050 (91)  
WDA  
2.77

CALVING EASE ★★  
DAM INFO AGE: 5 MPPA: 100 MATURE WT: 1240

PRO	S	HB	GM	CED	BW	WW	YW	MLK	ME	HP	CEM	ST	MB	YG	CW	REA	BF
112	85	27	13	-3.1	61	89	27	-2	18	5	15	0.62	0.16	10	-0.15	0.04	
58%	35%	75%	37%	24%	46%	63%	35%	30%	1%	85%	61%	10%	95%	85%	94%	95%	

100% AR      ADJ IMF (RATIO) 3.61 (116)      ADJ REA (RATIO) 13.3 (102)

Lot 24 has been a standout since birth. #8 of 62 WW, #3 of 56 YW and a REA ratio of 114. Z4 has a great udder, that produces a keeper each and every year.

Lots 25 & 26 are heifer bull prospects that are fault free. The Red Oak daughters are very moderate, heavy milking work horses that don't require any extra groceries.

A

WATCH AND BID LIVE

**DVAuction**  
Broadcasting Real-Time Auctions

**26 TAC BOURNE H12**

REG 4392075  
DOB 2/20/20  
TATTOO H12

5L ADVANTAGE 3267-221Y  
5L BOURNE 117-48A  
5L ROXIE 854-117

BROWN RED OAK A7639  
TAC CHEYENNE F542  
TAC MS CHEYENNE D260

BUF CRK THE RIGHT KIND U199  
5L ADINA 195-3267  
5L SIGNATURE 5615  
XXX ROXIE 854 MR  
HUST CHIEF SEQUOYA R336  
BROWN MS P707 Y7686  
TAC MATERNAL MADE Z30  
TBLC MISS 605 CHEYENNE 148

ACT BW (RATIO) 69 (99)  
ADJ WW (RATIO) 568 (106)  
ADJ YW (RATIO) 1216 (105)  
WDA  
3.00

CALVING EASE ★★  
DAM INFO AGE: 3 MPPA: 102 MATURE WT: 856

PRO	S	HB	GM	CED	BW	WW	YW	MLK	ME	HP	CEM	ST	MB	YG	CW	REA	BF
114	73	41	11	-2.5	70	108	27	-2	18	2	13	0.61	0.18	18	-0.09	0.04	
55%	63%	45%	75%	35%	14%	22%	30%	27%	1%	99%	75%	11%	97%	56%	88%	95%	

100% AR      ADJ IMF (RATIO) 3.79 (122)      ADJ REA (RATIO) 13.8 (106)



# RED ANGUS BULLS

*Reference Sire*



**C-BAR LEVERAGE 8115F**

## LEVERAGE SIRE GROUP

Leverage was our pick of C-Bars bull battery in 2019. We were in search of a Franchise son that had the capacity and spring of rib to hold up in our range conditions. Stony has been a true asset to the C-Bar program and we felt he was the one we needed for our program.

*Tried and true heifer bulls that are carcass oriented!*



**LOT 28**

**28 TAC LEVERAGE H9**

REG 4392181  
DOB 2/19/20  
TATTOO H9

SPUR FRANCHISE OF GARTON  
**C-BAR LEVERAGE 8115F**  
ADHM STONY 503C

5L PERFECT STORM 1201-172D  
**TAC MS SLEEK F163**  
TAC MS SLEEK D344

SPUR FRANCHISE 7070  
H & H IRENE LASS 0135  
LSF SAGA 1040Y  
C-BAR MS STONY A302  
5L THE REAL DEAL 1687-143B  
5L RUBY 829-1201  
BIEBER ROLLIN DEEP Y118  
HAT MISS SLEEK WCR 7R91

<b>ACT BW (RATIO)</b>	<b>56 (81)</b>
<b>ADJ WW (RATIO)</b>	<b>481 (90)</b>
<b>ADJ YW (RATIO)</b>	<b>1064 (92)</b>
<b>WDA</b>	<b>2.59</b>

CALVING EASE ★★★★★ **DAM INFO** AGE: 3 MPPA: 96 MATURE WT: 972

PRO S	HB	GM	CED	BW	WW	YW	MLK	ME	HP	CEM	ST	MB	YG	CW	REA	BF
110	72	38	16	-3.8	48	80	24	2	12	10	14	0.40	0.00	19	0.25	0.02
61%	64%	51%	12%	15%	85%	80%	62%	57%	40%	5%	73%	49%	22%	54%	19%	52%

**100% AR**      **ADJ IMF (RATIO)** 2.69 (87)      **ADJ REA (RATIO)** 12.6 (96)

Soft made Leverage son. Calving ease Perfect Storm daughter who goes back to the Sleek cow family that has stood the test of time.



**LOT 27**

**27 TAC LEVERAGE H79**

REG 4392193  
DOB 2/28/20  
TATTOO H79

SPUR FRANCHISE OF GARTON  
**C-BAR LEVERAGE 8115F**  
ADHM STONY 503C

BIEBER ROOSEVELT W384  
**TAC SURPRISE C140-Y365 ET**  
BIEBER SUPRISE 365Y

SPUR FRANCHISE 7070  
H & H IRENE LASS 0135  
LSF SAGA 1040Y  
C-BAR MS STONY A302  
BIEBER ROUGH RIDER 10712  
BIEBER SHEBA 9602  
MESSMER PACKER S008  
BIEBER SURPRISE 9827

<b>ACT BW (RATIO)</b>	<b>86 (112)</b>
<b>ADJ WW (RATIO)</b>	<b>504 (94)</b>
<b>ADJ YW (RATIO)</b>	<b>1179 (102)</b>
<b>WDA</b>	<b>3.11</b>

CALVING EASE ★★★★★ **DAM INFO** AGE: 6 MPPA: 93 MATURE WT: 1346

PRO S	HB	GM	CED	BW	WW	YW	MLK	ME	HP	CEM	ST	MB	YG	CW	REA	BF
121	69	51	10	1.0	63	106	20	2	13	6	14	0.35	0.06	32	0.34	0.03
42%	70%	23%	85%	92%	36%	27%	88%	57%	23%	78%	72%	61%	53%	13%	10%	82%

**100% AR**      **ADJ IMF (RATIO)** 3.04 (98)      **ADJ REA (RATIO)** 15.6 (119)

One of the thickest bulls in the offering. C140 is a female that is hard to fault. Great feet and legs and an awesome udder. She is a great looking Roosevelt daughter. Calving ease, maternal, carcass oriented.



**LOT 29**

**29 TAC LEVERAGE H93**

REG 4392143  
DOB 2/29/20  
TATTOO H93

SPUR FRANCHISE OF GARTON  
**C-BAR LEVERAGE 8115F**  
ADHM STONY 503C

3SCC ZEUS T70  
**3SCC EUCLA Y115**  
3SCC EUCLA W740

SPUR FRANCHISE 7070  
H & H IRENE LASS 0135  
LSF SAGA 1040Y  
C-BAR MS STONY A302  
BASIN HOB0 0545  
RRM MISS HEAVEN'S SAKE F811  
BASIN TREND SETTER 45S5  
BSKF EUCLA T253

<b>ACT BW (RATIO)</b>	<b>80 (105)</b>
<b>ADJ WW (RATIO)</b>	<b>513 (96)</b>
<b>ADJ YW (RATIO)</b>	<b>1111 (96)</b>
<b>WDA</b>	<b>2.96</b>

CALVING EASE ★★★★★ **DAM INFO** AGE: 10 MPPA: 99 MATURE WT: 1152

PRO S	HB	GM	CED	BW	WW	YW	MLK	ME	HP	CEM	ST	MB	YG	CW	REA	BF
138	88	50	15	-2.7	47	76	25	2	13	9	16	0.55	0.06	17	0.12	0.02
17%	28%	25%	15%	32%	88%	85%	52%	56%	19%	9%	36%	19%	52%	59%	43%	68%

**100% AR**      **ADJ IMF (RATIO)** 3.11 (100)      **ADJ REA (RATIO)** 16.0 (122)

#1 REA bull of the Red Angus offering. The Eucla cow line from Sonstegard's is no stranger to breed leaders, producing the popular Domain bull that is the talk of the breed. Have sold several sons of Y115 and they are tried and true heifer bulls.

A

# RED ANGUS BULLS

## 30 TAC LEVERAGE H68

REG 4392111	SPUR FRANCHISE OF GARTON <b>C-BAR LEVERAGE 8115F</b> ADHM STONY 503C	SPUR FRANCHISE 7070 H & H IRENE LASS 0135 LSF SAGA 1040Y C-BAR MS STONY A302 5L DEFENDER 560-30Z 5L OPAL 656-2218 RED TER-RON RELOAD 703T 3SCC TAWNY X604	<b>ACT BW (RATIO)</b> 63 (87) <b>ADJ WW (RATIO)</b> 503 (94) <b>ADJ YW (RATIO)</b> 1070 (92) WDA 2.75
DOB 2/27/20	5L BLOCKADE 2218-30B <b>TAC TAWNY E42</b> TAC TAWNY A15-X604		
TATTOO H68			
CALVING EASE ★★★	<b>DAM INFO</b> AGE: 4 MPPA: 99 MATURE WT: 1084		
<b>PRO S HB</b>	<b>GM CED BW WW YW MLK ME HP CEM ST MB YG CW REA BF</b>		
108 72	35 15 -3.3 52 84 22 0 12 8 14 0.43 -0.02 19 0.28 0.01		
65% 64%	57% 15% 22% 77% 74% 75% 40% 31% 36% 65% 41% 14% 54% 15% 38%		
<b>100% AR</b>	<b>ADJ IMF (RATIO)</b> 3.93 (127) <b>ADJ REA (RATIO)</b> 13.9 (107)		

Very complete heifer bull prospect going back to Basin Trend Setter, who made true longevity females.



LOT 32



LOT 31

REG 4392145	BIEBER ROOSEVELT W384 <b>BIEBER ROLLIN DEEP Y118</b> BIEBER TILLY 399W	BIEBER ROUGH RIDER 10712 BIEBER SHEBA 9602 BIEBER BOONE 8000 BIEBER TILLY 303S RED SSS OLY 554T VGW TM-DORA 0758 BASIN SALUTE R060 BASIN MISS 2910	<b>ACT BW (RATIO)</b> 76 (98) <b>ADJ WW (RATIO)</b> 564 (105) <b>ADJ YW (RATIO)</b> 1227 (106) WDA 3.27
DOB 2/26/20	VGW OLY 903 <b>BIEBER MISS 150Z</b> BASIN MISS 8226		
TATTOO H63			
CALVING EASE ★★	<b>DAM INFO</b> AGE: 9 MPPA: 99 MATURE WT: 1216		
<b>PRO S HB</b>	<b>GM CED BW WW YW MLK ME HP CEM ST MB YG CW REA BF</b>		
131 84	47 12 -1.9 66 112 24 7 10 9 16 0.37 0.11 31 0.23 0.04		
26% 37%	31% 55% 47% 26% 15% 57% 92% 71% 18% 35% 56% 79% 15% 22% 88%		
<b>100% AR</b>	<b>ADJ IMF (RATIO)</b> 3.39 (109) <b>ADJ REA (RATIO)</b> 11.8 (90)		

From a phenotype standpoint, there isn't one thing I would change about this stud. He always demands your attention while walking through the pen. #1 of 53 for back fat. The females this bull is going to produce get me excited. We don't have many Oly 903 daughters, but 150Z is a true range cow. Moderate and always weans one of the heaviest calves.

## 31 TAC LEVERAGE H148

REG 4392177	SPUR FRANCHISE OF GARTON <b>C-BAR LEVERAGE 8115F</b> ADHM STONY 503C	SPUR FRANCHISE 7070 H & H IRENE LASS 0135 LSF SAGA 1040Y C-BAR MS STONY A302 BROWN PARAMOUNT X7879 BROWN MS REVELATION T7650 COLEY'S MOJITO 503R GLACIER KIMA 949	<b>ACT BW (RATIO)</b> 82 (106) <b>ADJ WW (RATIO)</b> 536 (100) <b>ADJ YW (RATIO)</b> 1170 (101) WDA 3.15
DOB 3/4/20	LSF RAB PERFORMANCE 2772Z <b>LAZY MS BOADACIA 4128-7046</b> JACOBSON KIMA 7046		
TATTOO H148			
CALVING EASE ★★★	<b>DAM INFO</b> AGE: 7 MPPA: 102 MATURE WT: 1270		
<b>PRO S HB</b>	<b>GM CED BW WW YW MLK ME HP CEM ST MB YG CW REA BF</b>		
133 87	46 12 -0.7 62 102 24 2 12 7 16 0.43 -0.01 22 0.33 0.01		
23% 29%	33% 59% 71% 40% 35% 62% 58% 32% 45% 36% 41% 16% 39% 10% 48%		
<b>100% AR</b>	<b>ADJ IMF (RATIO)</b> 3.19 (103) <b>ADJ REA (RATIO)</b> 15.1 (116)		

Even numbered bull that doesn't slack in any trait. Ms Boadacia is a moderate framed female that has produced several daughters in herd with several sons working out in the country. One of the tamest cows in the herd and always wants your attention.

REG 4392091	BIEBER ROOSEVELT W384 <b>BIEBER ROLLIN DEEP Y118</b> BIEBER TILLY 399W	BIEBER ROUGH RIDER 10712 BIEBER SHEBA 9602 BIEBER BOONE 8000 BIEBER TILLY 303S 3SCC DOMINOR W338 MESSMER GINNIE V536 LJC MISSION STATEMENT P27 LARSON PRINCESS ANN 054-409	<b>ACT BW (RATIO)</b> 74 (101) <b>ADJ WW (RATIO)</b> 529 (99) <b>ADJ YW (RATIO)</b> 1194 (103) WDA 3.04
DOB 2/22/20	3SCC DICTATE C74 <b>TAC PRINCESS ANN E16</b> VF PRINCESS ANN A236-054		
TATTOO H24			
CALVING EASE ★★★	<b>DAM INFO</b> AGE: 4 MPPA: 100 MATURE WT: 1114		
<b>PRO S HB</b>	<b>GM CED BW WW YW MLK ME HP CEM ST MB YG CW REA BF</b>		
133 83	50 11 -0.6 70 122 31 10 7 17 0.27 0.10 41 0.42 0.04		
22% 37%	25% 77% 72% 15% 6% 8% 98% 70% 49% 22% 82% 77% 3% 5% 94%		
<b>100% AR</b>	<b>ADJ IMF (RATIO)</b> 2.99 (96) <b>ADJ REA (RATIO)</b> 13.2 (101)		

Soft, deep, thick made Rollin Deep son going back to the infamous Princess Ann cow family that are breed leaders in growth. I am super impressed with this set this year. Here we are at lot 34 in the sale with quality that could lead the offering.



# RED ANGUS BULLS



**LOT 34**

## LOTS 34-37 AGED BULLS

Virgin Fall bulls that are like peas in a pod. Perfect Storm has been a true asset to our program. Calving ease that doesn't give up any carcass merit. These bulls are ready to go with that extra age that everyone wants.

**34 TAC PERFECT STORM G937**

REG 4397369  
DOB 9/21/19  
TATTOO G916

5L THE REAL DEAL 1687-143B  
**5L PERFECT STORM 1201-172D**  
5L RUBY 829-1201

BROWN JYJ REDEMPTION Y1334  
**TAC BRANDY C144-Y112 ET**  
3SCC BRANDY Y112

5L DEFENDER 560-30Z  
5L FIREFLY 275-1687  
BUF CRK THE RIGHT KIND U199  
5L RUBY 162-829  
BECKTON NEBULA P P707  
JYJ MS JOLENE W16  
3SCC ZEPPLIN S99  
3SCC BRANDY R44

ACT BW (RATIO) 76 (97)  
ADJ WW (RATIO) 679 (107)  
ADJ YW (RATIO) WDA

CALVING EASE ★★ ★★  
DAM INFO AGE: 6 MPPA: 104

PRO S	HB	GM	CED	BW	WW	YW	MLK	ME	HP	CEM	ST	MB	YG	CW	REA	BF
130	77	53	13	-1.9	60	104	24	4	11	9	15	0.44	0.04	28	0.17	0.01
27%	53%	20%	48%	48%	46%	30%	62%	76%	56%	17%	59%	40%	41%	20%	32%	26%

**100% AR**



**LOT 36**



**LOT 35**

**35 TAC PERFECT STORM G922**

REG 4397365  
DOB 9/15/19  
TATTOO G922

5L THE REAL DEAL 1687-143B  
**5L PERFECT STORM 1201-172D**  
5L RUBY 829-1201

BADLANDS NET WORTH 23U  
**3SCC BRANDY Y45**  
3SCC BRANDY S168

5L DEFENDER 560-30Z  
5L FIREFLY 275-1687  
BUF CRK THE RIGHT KIND U199  
5L RUBY 162-829  
PFFR SHAQ 607  
BADLANDS MEDORA 406  
K F BANDOLIER 814  
RRM MISS BASIN 0545 4008

ACT BW (RATIO) 84 (105)  
ADJ WW (RATIO) 621 (98)  
ADJ YW (RATIO) WDA

CALVING EASE ★★ ★★  
DAM INFO AGE: 10 MPPA: 97

PRO S	HB	GM	CED	BW	WW	YW	MLK	ME	HP	CEM	ST	MB	YG	CW	REA	BF
132	87	45	9	0.6	58	88	21	0	13	7	16	0.51	0.01	23	0.20	0.01
24%	29%	35%	89%	89%	58%	66%	85%	42%	22%	57%	37%	25%	23%	38%	27%	26%

**100% AR**

**36 TAC PERFECT STORM G900**

REG 4397367  
DOB 9/17/19  
TATTOO G900

5L THE REAL DEAL 1687-143B  
**5L PERFECT STORM 1201-172D**  
5L RUBY 829-1201

3SCC EXT W35  
**TAC CASIE 1R0-21S**  
HR CASIE 21S

5L DEFENDER 560-30Z  
5L FIREFLY 275-1687  
BUF CRK THE RIGHT KIND U199  
5L RUBY 162-829  
BASIN EXT 1925  
SRA MISS ARTIC 235  
HR SPIKE 4R94  
HR MY 21N

ACT BW (RATIO) 78 (98)  
ADJ WW (RATIO) 601 (95)  
ADJ YW (RATIO) WDA

CALVING EASE ★★ ★★  
DAM INFO AGE: 10 MPPA: 92

PRO S	HB	GM	CED	BW	WW	YW	MLK	ME	HP	CEM	ST	MB	YG	CW	REA	BF
121	83	38	11	-2.2	48	78	18	0	11	8	17	0.31	0.04	20	0.19	0.02
41%	38%	51%	69%	42%	86%	83%	95%	41%	43%	36%	33%	70%	41%	48%	30%	65%

**100% AR**

**37 TAC PERFECT STORM G417**

REG 4230044  
DOB 3/25/19  
TATTOO G417

5L THE REAL DEAL 1687-143B  
**5L PERFECT STORM 1201-172D**  
5L RUBY 829-1201

HXC CONQUEST 4405P  
**EIR A203**  
EIR Y218

5L DEFENDER 560-30Z  
5L FIREFLY 275-1687  
BUF CRK THE RIGHT KIND U199  
5L RUBY 162-829  
BECKTON JULIAN GG B571  
HXC ELLIE MAY MA638  
RED SIX MILE SAKIC 832S  
EIR M212

ACT BW (RATIO) 90 (110)  
ADJ WW (RATIO) 485 (104)  
ADJ YW (RATIO) 1115 (114)  
WDA 2.99

CALVING EASE ★★ ★★  
DAM INFO AGE: 8 MPPA: 109

PRO S	HB	GM	CED	BW	WW	YW	MLK	ME	HP	CEM	ST	MB	YG	CW	REA	BF
119	71	49	14	-1.9	65	111	27	8	13	9	13	0.35	0.03	28	0.08	-0.01
44%	67%	28%	26%	47%	28%	17%	27%	96%	23%	10%	79%	61%	35%	21%	53%	7%

**100% AR**

Two-year-old that was used as a backup for a customer last season. Will be trich tested.

# RED ANGUS BULLS



**38 TAC PERFECT STORM H241**

REG 4392099  
DOB 3/13/20  
TATTOO H241  
CALVING EASE ★★★★★

5L THE REAL DEAL 1687-143B  
5L PERFECT STORM 1201-172D  
5L RUBY 829-1201

5L BOURNE 117-48A  
TAC MS MARIGOLD F78 ET  
SDCC MARIGOLD 501W

5L DEFENDER 560-30Z  
5L FIREFLY 275-1687  
BUF CRK THE RIGHT KIND U199  
5L RUBY 162-829  
5L ADVANTAGE 3267-221Y  
5L ROXIE 854-117  
RED HILL B571 JULIAN 84S  
BUF CRK MARIGOLD T132

ACT BW (RATIO) 47 (70)  
ADJ WW (RATIO) 567 (106)  
ADJ YW (RATIO) 1147 (100)  
WDA 2.92

DAM INFO AGE: 3 MPPA: 102

PRO	S	HB	GM	CED	BW	WW	YW	MLK	ME	HP	CEM	ST	MB	YG	CW	REA	BF
113	75	38	18	-6.1	56	88	28	-1	13	9	13	0.42	0.01	18	0.23	0.02	
56%	59%	51%	3%	2%	63%	67%	26%	37%	15%	12%	79%	44%	23%	56%	22%	52%	

100% AR  
ADJ IMF (RATIO) 2.40 (86)  
ADJ REA (RATIO) 13.6 (100)

This is the mental picture in my mind when describing a heifer bull. He has that perfect shaped head and an impeccably smooth shoulder set that will make perfect mamma cows. Dam is a full sib to Rebourne.

# ATA CATTLE

Annual Bull and Female Sale  
THURSDAY - 12:00 PM

## April 1, 2021

WEST POINT LIVESTOCK / WEST POINT, NE

**39 TAC H129**

REG Commercial  
DOB 3/2/20  
TATTOO H129  
CALVING EASE ★★★★★

5L THE REAL DEAL 1687-143B  
5L PERFECT STORM 1201-172D  
5L RUBY 829-1201

GP WALLACE 016  
TAC CHEYENNE E159  
TBLC MISS 605 CHEYENNE 191

5L DEFENDER 560-30Z  
5L FIREFLY 275-1687  
BUF CRK THE RIGHT KIND U199  
5L RUBY 162-829  
LJC MISSION STATEMENT P27  
GP FAITH 803  
TBLC CHEYENNE 605  
TBLC MISS TANK 678

ACT BW 86  
ADJ WW 579  
ADJ YW 1203  
WDA

DAM INFO AGE: 4

PRO	S	HB	GM	CED	BW	WW	YW	MLK	ME	HP	CEM	ST	MB	YG	CW	REA	BF

100% AR  
ACT IMF (RATIO) 4.04  
ACT REA (RATIO) 13.0

Had a miscommunication on DNA with donor 191. His dam, E159, is on hold until parentage is confirmed but will be registered as soon as I get results back.

A



# RED ANGUS BULLS

## Reference Sire

### TAC REBOURNE F105 ET 4056138

5L ADVANTAGE 3267-221Y  
**5L BOURNE 117-48A**  
 5L ROXIE 854-117

RED HILL B571 JULIAN 84S  
**SDCC MARIGOLD 501W**  
 BUF CRK MARIGOLD T132

BUF CRK THE RIGHT KIND U199  
 5L ADINA 195-3267  
 5L SIGNATURE 5615  
 XXX ROXIE 854 MR  
 BECKTON JULIAN GG B571  
 BECKTON BARMAID M554 CH  
 BFCK CHEROKEE CNYN 4912  
 BUF CRK MARIGOLD 6068



PRO	S	HB	GM	CED	BW	WW	YW	MLK	ME	HP	CEM	ST	MB	YG	CW	REA	BF
90	74	16	13	-3.4	64	93	29	-3	17	4	13	0.37	0.04	7	0.17	0.04	
82%	58%	85%	43%	23%	39%	59%	18%	27%	3%	89%	73%	55%	39%	86%	34%	87%	

## REBOURNE SIRE GROUP

Impressive set of early growth bulls that ratioed very well for WW, YW, and REA. These Rebourne sons are moderate, long bodied meat wagons. This sire group is hard to pick a hole in.



**LOT 40**



**LOT 42**

### 40 TAC REBOURNE H55

REG 4392151  
 DOB 2/26/20  
 TATTOO H55  
 CALVING EASE ★★ ★

5L BOURNE 117-48A  
**TAC REBOURNE F105 ET**  
 SDCC MARIGOLD 501W

TAC WALLACE B112  
**TAC JUDY E448**  
 3SCC JUDY Y360

5L ADVANTAGE 3267-221Y  
 5L ROXIE 854-117  
 RED HILL B571 JULIAN 84S  
 BUF CRK MARIGOLD T132  
 GP WALLACE 016  
 3SCC BRANDY Y112  
 BHR GOLDEN BOY 854  
 MISS PREMIUM J3560

**ACT BW (RATIO)** 74 (101)  
**ADJ WW (RATIO)** 610 (114)  
**ADJ YW (RATIO)** 1238 (107)  
**WDA**  
**3.20**

**DAM INFO** AGE: 4 MPPA: 106 MATURE WT: 1316

PRO	S	HB	GM	CED	BW	WW	YW	MLK	ME	HP	CEM	ST	MB	YG	CW	REA	BF
89	67	22	10	-1.0	74	112	30	3	13	4	14	0.25	0.00	18	0.31	0.02	
89%	74%	84%	85%	65%	7%	16%	11%	69%	21%	94%	71%	86%	20%	57%	12%	68%	

**100% AR**      **ADJ IMF (RATIO)** 2.25 (73)      **ADJ REA (RATIO)** 14.6 (112)

### 42 TAC REBOURNE H226

REG 4392095  
 DOB 3/11/20  
 TATTOO H226  
 CALVING EASE ★★ ★

5L BOURNE 117-48A  
**TAC REBOURNE F105 ET**  
 SDCC MARIGOLD 501W

TAC PROSPECT C2  
**TAC DANA E71**  
 3SCC DANA A479

5L ADVANTAGE 3267-221Y  
 5L ROXIE 854-117  
 RED HILL B571 JULIAN 84S  
 BUF CRK MARIGOLD T132  
 LSF PROSPECT 2035Z  
 VF PRINCESS ANN A236-054  
 BHR GOLDEN BOY 854  
 BSKF DANA X761

**ACT BW (RATIO)** 76 (103)  
**ADJ WW (RATIO)** 561 (105)  
**ADJ YW (RATIO)** 1165 (101)  
**WDA**  
**3.06**

**DAM INFO** AGE: 4 MPPA: 103 MATURE WT: 1230

PRO	S	HB	GM	CED	BW	WW	YW	MLK	ME	HP	CEM	ST	MB	YG	CW	REA	BF
107	74	33	12	-1.9	64	99	30	4	13	6	14	0.40	0.03	18	0.28	0.03	
65%	59%	63%	61%	47%	31%	41%	12%	75%	21%	61%	65%	49%	35%	58%	15%	86%	

**100% AR**      **ADJ IMF (RATIO)** 2.72 (98)      **ADJ REA (RATIO)** 14.0 (104)

### 41 TAC REBOURNE H170

REG 4392131  
 DOB 3/5/20  
 TATTOO H170  
 CALVING EASE ★★ ★

5L BOURNE 117-48A  
**TAC REBOURNE F105 ET**  
 SDCC MARIGOLD 501W

3SCC DICTATE C74  
**TAC FLOWER E146**  
 TAC FLOWER Z4

5L ADVANTAGE 3267-221Y  
 5L ROXIE 854-117  
 RED HILL B571 JULIAN 84S  
 BUF CRK MARIGOLD T132  
 3SCC DOMINOR W338  
 MESSMER GINNIE V536  
 BASIN EXT W103  
 BIEBER FLOWER 10383

**ACT BW (RATIO)** 94 (127)  
**ADJ WW (RATIO)** 593 (110)  
**ADJ YW (RATIO)** 1283 (111)  
**WDA**  
**3.34**

**DAM INFO** AGE: 4 MPPA: 104 MATURE WT: 1392

PRO	S	HB	GM	CED	BW	WW	YW	MLK	ME	HP	CEM	ST	MB	YG	CW	REA	BF
116	72	44	8	1.1	77	125	31	4	15	2	15	0.30	0.07	28	0.36	0.04	
50%	63%	38%	95%	93%	1%	4%	7%	77%	6%	98%	58%	74%	57%	20%	9%	94%	

**100% AR**      **ADJ IMF (RATIO)** 3.61 (116)      **ADJ REA (RATIO)** 14.1 (108)

### 43 TAC REBOURNE H146

REG 4392173  
 DOB 3/3/20  
 TATTOO H146  
 CALVING EASE ★★ ★

5L BOURNE 117-48A  
**TAC REBOURNE F105 ET**  
 SDCC MARIGOLD 501W

BHR GOLDEN BOY 854  
**3SCC DANA A479**  
 BSKF DANA X761

5L ADVANTAGE 3267-221Y  
 5L ROXIE 854-117  
 RED HILL B571 JULIAN 84S  
 BUF CRK MARIGOLD T132  
 BHR GOLDEN BOY 453B  
 LSF RED FAY LA425 P4025  
 STEVENSON SALUTE H505T  
 BIEBER TITAN DANA 8032

**ACT BW (RATIO)** 80 (103)  
**ADJ WW (RATIO)** 548 (102)  
**ADJ YW (RATIO)** 1081 (93)  
**WDA**  
**2.94**

**DAM INFO** AGE: 8 MPPA: 104 MATURE WT: 1550

PRO	S	HB	GM	CED	BW	WW	YW	MLK	ME	HP	CEM	ST	MB	YG	CW	REA	BF
90	71	19	12	-2.1	58	83	28	4	12	6	15	0.43	0.01	7	0.15	0.03	
88%	66%	89%	50%	42%	57%	76%	20%	73%	27%	69%	56%	41%	23%	91%	38%	73%	

**100% AR**      **ADJ IMF (RATIO)** 2.67 (86)      **ADJ REA (RATIO)** 13.4 (103)

# RED ANGUS BULLS

## Reference Sire



**TAC A191**

**46**

## TAC TAKEOVER H232

REG  
**4392057**

DOB  
**3/12/20**

TATTOO  
**H232**

CALVING EASE  
★★★

LSF TAKEOVER 9943W  
**TAC A191**  
TBLC MISS 605 CHEYENNE 191  
  
TAC SHOOTER A435  
**TAC MS SYSCO F173**  
TAC YSCO A333-U333

HXC CONQUEST 4405P  
LSF WIDELOAD R5014 U8061  
TBLC CHEYENNE 605  
TBLC MISS TANK 678  
BIEBER H HUGHES W109  
OLC ANGELA R435  
SDCC JACKHAMMER 731Y  
3SCC YSCO U333

**ACT BW (RATIO)**  
**73 (103)**  
**ADJ WW (RATIO)**  
**569 (106)**  
**ADJ YW (RATIO)**  
**1233 (107)**  
**WDA**  
**3.15**

**DAM INFO** AGE: **3** MPPA: **102** MATURE WT: **1110**

PRO	S	HB	GM	CED	BW	WW	YW	MLK	ME	HP	CEM	ST	MB	YG	CW	REA	BF
130	76	53	15	-3.0	65	104	26	1	12	9	13	0.60	0.09	20	0.07	0.03	
28%	55%	20%	15%	27%	30%	31%	39%	47%	33%	15%	78%	12%	69%	49%	55%	74%	

**100% AR**

**ADJ IMF (RATIO)** **2.97 (107)** **ADJ REA (RATIO)** **14.7 (108)**

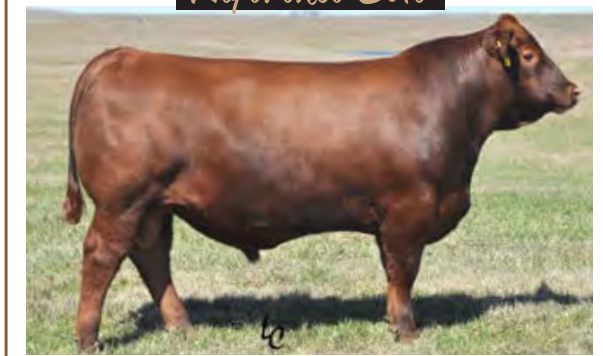
Tried and true calving ease on both sides of his pedigree.

## Reference Dam



**VF PRINCESS ANN A236-054**

## Reference Sire



**GP WALLACE 016**

A

**44**

## TAC TAKEOVER H333



REG  
**4392037**

DOB  
**3/22/20**

TATTOO  
**H333**

CALVING EASE  
★★

LSF TAKEOVER 9943W  
**TAC A191**  
TBLC MISS 605 CHEYENNE 191  
  
LJC MISSION STATEMENT P27  
**VF PRINCESS ANN A236-054**  
LARSON PRINCESS ANN 054-409

HXC CONQUEST 4405P  
LSF WIDELOAD R5014 U8061  
TBLC CHEYENNE 605  
TBLC MISS TANK 678  
LJC LANCER 806  
LJC HANNAH 106  
LORENZEN PRIME CUT 7102  
LARSON PRINCESS ANN 409-211

**ACT BW (RATIO)**  
**73 (94)**  
**ADJ WW (RATIO)**  
**608 (113)**  
**ADJ YW (RATIO)**  
**1282 (111)**  
**WDA**  
**3.52**

**DAM INFO** AGE: **8** MPPA: **119** MATURE WT: **1620**

PRO	S	HB	GM	CED	BW	WW	YW	MLK	ME	HP	CEM	ST	MB	YG	CW	REA	BF
127	54	73	11	-1.3	75	130	26	7	12	6	11	0.49	0.06	41	0.35	0.02	
32%	91%	3%	75%	58%	6%	2%	36%	93%	42%	61%	93%	30%	54%	3%	9%	52%	

**100% AR**

**ADJ IMF (RATIO)** **3.00 (97)** **ADJ REA (RATIO)** **15.2 (116)**

A236 makes cattle that excel in growth and carcass. Yes, she is a bigger cow than I feel is ideal, but she calves on time every year weaning off one of the biggest and it doesn't matter which sire you throw at her. We flushed her to Quarterback and have several full sibs that we are excited to offer next year.

**45**

## TAC TAKEOVER H388

REG  
**4392191**

DOB  
**3/28/20**

TATTOO  
**H388**

CALVING EASE  
★★★

LSF TAKEOVER 9943W  
**TAC A191**  
TBLC MISS 605 CHEYENNE 191  
  
BECKTON NEBULA P P707  
**TAC VENUS D70**  
EIR A203

HXC CONQUEST 4405P  
LSF WIDELOAD R5014 U8061  
TBLC CHEYENNE 605  
TBLC MISS TANK 678  
BECKTON NEBULA M045  
BECKTON LANA M809 EP  
HXC CONQUEST 4405P  
EIR Y218

**ACT BW (RATIO)**  
**72 (94)**  
**ADJ WW (RATIO)**  
**464 (86)**  
**ADJ YW (RATIO)**  
**1208 (104)**  
**WDA**  
**3.26**

**DAM INFO** AGE: **5** MPPA: **97** MATURE WT: **1310**

PRO	S	HB	GM	CED	BW	WW	YW	MLK	ME	HP	CEM	ST	MB	YG	CW	REA	BF
140	75	65	15	-4.3	60	106	26	4	13	7	15	0.65	0.15	20	-0.12	0.03	
14%	57%	7%	15%	10%	49%	26%	44%	73%	19%	38%	61%	7%	94%	48%	91%	76%	

**100% AR**

**ADJ IMF (RATIO)** **3.87 (125)** **ADJ REA (RATIO)** **13.8 (106)**

D70 is a direct P707 daughter that is a model Red Angus cow. His sire is a true asset to our program. Sure shot calving ease who will make moderate, easy keeping females with great udders and maternal instinct.

**47**

## TAC WALLACE H19

REG  
**4392119**

DOB  
**2/21/20**

TATTOO  
**H19**

CALVING EASE  
★★★

LJC MISSION STATEMENT P27  
**GP WALLACE 016**  
GP FAITH 803  
  
5L BOURNE 117-48A  
**TAC MS MARI GOLD F73 ET**  
SDCC MARI GOLD 501W

LJC LANCER 806  
LJC HANNAH 106  
LCC FIELD DAY A614N  
LSF FAITH LA416  
5L ADVANTAGE 3267-221Y  
5L ROXIE 854-117  
RED HILL 8571 JULIAN 84S  
BUF CRK MARI GOLD T132

**ACT BW (RATIO)**  
**75 (106)**  
**ADJ WW (RATIO)**  
**585 (109)**  
**ADJ YW (RATIO)**  
**1249 (108)**  
**WDA**  
**3.11**

**DAM INFO** AGE: **3** MPPA: **104** MATURE WT: **956**

PRO	S	HB	GM	CED	BW	WW	YW	MLK	ME	HP	CEM	ST	MB	YG	CW	REA	BF
118	77	40	13	-2.0	73	114	27	2	12	6	15	0.31	-0.05	26	0.44	0.01	
47%	52%	46%	43%	45%	9%	13%	32%	63%	30%	71%	61%	72%	8%	27%	4%	38%	

**100% AR**

**ADJ IMF (RATIO)** **2.44 (79)** **ADJ REA (RATIO)** **14.8 (113)**

We have to offer a Wallace son in the sale just to make it complete. Wallace is still one of the most consistent herd sires we have used. The natural thickness these cattle possess is unmatched. His dam is one fine female also being a full sib to Rebourne.



# RED ANGUS BULLS

Reference Sire



**3SSC DOUBLE BARREL E146**



**LOT 51**

**48 TAC DOUBLE BARREL H220**

REG 4392069  
DOB 3/11/20  
TATTOO H220  
CALVING EASE ★★

RED BENCHMARK TRANSITION 10-14  
**3SSC DOUBLE BARREL E146**  
NSFR MTX C71

5L BLOCKADE 2218-30B  
**TAC MS CHEYENNE F242**  
TAC CHEYENNE C216-136

LSF MEW GAME CHANGER 1613Y  
RED BENCHMARK LANA 60'11  
RED SOO LINE POWER EYE 161X  
NSFR MTX W17

5L DEFENDER 560-30Z  
5L OPAL 656-2218  
GP WALLACE 016  
TBLC MISS 605 CHEYENNE 136

ACT BW (RATIO)	70 (99)
ADJ WW (RATIO)	541 (101)
ADJ YW (RATIO)	1171 (101)
WDA	
	2.95

DAM INFO AGE: 3 MPPA: 100 MATURE WT: 1138

PRO	S	HB	GM	CED	BW	WW	YW	MLK	ME	HP	CEM	ST	MB	YG	CW	REA	BF
115	79	36	14	-1.6	67	106	21	-2	10	6	16	0.42	0.03	23	0.17	0.01	
53%	48%	57%	29%	53%	21%	26%	83%	31%	71%	65%	48%	44%	35%	36%	32%	38%	

100% AR ADJ IMF (RATIO) 3.35 (108) ADJ REA (RATIO) 13.3 (102)

Heifer bull that combines a lot of good. Only Double Barrel on the sale who goes back to one of the best Wallace females on the place.

**51 TAC BLUEPRINT H76**

REG 4398103  
DOB 2/28/20  
TATTOO H76  
CALVING EASE ★★

R LEADER 6964  
**BOYD 31Z BLUEPRINT 6153**  
NJW 91H 100W RITA 31Z ET

TAC WALLACE B112  
**TAC ABIGRACE E25**  
TAC ABIGRACE C143-L7730 ET

HYALITE ON TARGET 936  
R MISS REVOLUTION 1009  
NJW 73S M326 TRUST 100W ET  
REMITALL RITA 91H  
GP WALLACE 016  
3SSC BRANDY Y112  
BECKTON NEW ERA Y194  
BROWN MS ABIGRACE L7730

ACT BW (RATIO)	80 (111)
ADJ WW (RATIO)	555 (106)
ADJ YW (RATIO)	1121 (103)
WDA	
	3.01

DAM INFO AGE: 4 MPPA: 104 MATURE WT: 1052

PRO	S	HB	GM	CED	BW	WW	YW	MLK	ME	HP	CEM	ST	MB	YG	CW	REA	BF
-60	-58	-2	7	0.6	47	64	20	5	5	-1	0	0.04	0.00	9	-0.03	-0.03	
99%	99%	99%	97%	89%	88%	94%	88%	81%	99%	99%	99%	99%	20%	87%	79%	1%	

50% AR 43.8% HP 6.2% HH ADJ IMF (RATIO) 2.65 (108) ADJ REA (RATIO) 13.5 (101)

Blueprint is a breed-leading polled Hereford. True F1 red baldies with great pigment and type. Just imagine the cross on those Red Angus cows!

**49 TAC EXPLORER H88**

REG 4392087  
DOB 2/29/20  
TATTOO H88  
CALVING EASE ★★

VGW NAVIGATOR 010  
**3SSC EXPLORER B67**  
3SSC INGRID X201

3SSC DICTATE C74  
**TAC AQUILA E143**  
RIDGE AQUILA 836-456

BECKTON EPIC S163 K5  
VGW RT-INDIGO 0817  
BASIN TREND SETTER 45S5  
3SSC INGRID S256  
3SSC DOMINOR W338  
MESSMER GINNIE V536  
GLACIER PIONEER 939  
LONK AQUILA H836

ACT BW (RATIO)	74 (101)
ADJ WW (RATIO)	579 (108)
ADJ YW (RATIO)	1243 (107)
WDA	
	3.21

DAM INFO AGE: 4 MPPA: 103 MATURE WT: 1146

PRO	S	HB	GM	CED	BW	WW	YW	MLK	ME	HP	CEM	ST	MB	YG	CW	REA	BF
145	92	53	12	-1.5	66	115	30	2	12	6	18	0.36	0.17	32	0.06	0.04	
11%	19%	21%	56%	55%	26%	13%	10%	55%	34%	69%	19%	60%	96%	11%	58%	91%	

100% AR ADJ IMF (RATIO) 3.36 (108) ADJ REA (RATIO) 13.5 (103)

Bigger framed bull with loads of growth. The Navigator cows are very maternal.

**52 TAC BLUEPRINT H157**

REG 4398101  
DOB 3/4/20  
TATTOO H157  
CALVING EASE ★★

R LEADER 6964  
**BOYD 31Z BLUEPRINT 6153**  
NJW 91H 100W RITA 31Z ET

SDCC JACKHAMMER 731Y  
**TAC YSCO A333-U333**  
3SSC YSCO U333

HYALITE ON TARGET 936  
R MISS REVOLUTION 1009  
NJW 73S M326 TRUST 100W ET  
REMITALL RITA 91H  
HXC JACKHAMMER 8800U  
RIDGE SANDY 206-582  
MESSMER JULIAN 32N  
2RUL MISS SYSCO R578

ACT BW (RATIO)	62 (81)
ADJ WW (RATIO)	493 (94)
ADJ YW (RATIO)	1043 (97)
WDA	
	2.93

DAM INFO AGE: 8 MPPA: 100 MATURE WT: 1230

PRO	S	HB	GM	CED	BW	WW	YW	MLK	ME	HP	CEM	ST	MB	YG	CW	REA	BF
-49	-46	-2	10	-0.8	39	52	20	-2	6	1	0	0.10	0.00	-1	-0.15	-0.03	
99%	99%	99%	86%	70%	97%	98%	88%	32%	99%	99%	99%	99%	20%	98%	94%	1%	

50% AR 43.8% HP 6.2% HH ADJ IMF (RATIO) 2.24 (92) ADJ REA (RATIO) 13.2 (99)

**50 TAC PAYWEIGHT PLUS H34**

REG 4397375  
DOB 2/23/20  
TATTOO H34  
CALVING EASE ★★

BASIN PAYWEIGHT 1682  
**BASIN PAYWEIGHT PLUS 6048**  
EXAR ROYAL LASS 2810

5L BLOCKADE 2218-30B  
**TAC MS CASIE F76-1R0 ET**  
TAC CASIE 1R0-21S

BASIN PAYWEIGHT 006S  
21AR O LASS 7017  
CONNELLY CONSENSUS 7229  
EXAR ROYAL LASS 1067  
5L DEFENDER 560-30Z  
5L OPAL 656-2218  
3SSC EXT W35  
HR CASIE 21S

ACT BW	67
ADJ WW	574
ADJ YW	1198
WDA	
	2.99

DAM INFO AGE: 3 MATURE WT: 1178

PRO	S	HB	GM	CED	BW	WW	YW	MLK	ME	HP	CEM	ST	MB	YG	CW	REA	BF
161	92	70	15	-2.9	72	120	19	-3	12	8	15	0.52	0.16	44	0.34	0.05	
3%	20%	5%	14%	28%	9%	7%	94%	23%	28%	23%	58%	24%	94%	1%	10%	97%	

100% AR ADJ IMF (RATIO) 3.17 ( ) ADJ REA (RATIO) 12.8 ( )

Heifer bulls with these kinds of numbers are hard to come by. Casie females are hard to fault. Easy keeping cows on the ranch with an udder size and placement that couldn't be improved.

**53 TAC BLUEPRINT H117**

REG Commercial  
DOB 3/1/20  
TATTOO H117  
CALVING EASE ★★

R LEADER 6964  
**BOYD 31Z BLUEPRINT 6153**  
NJW 91H 100W RITA 31Z ET

TAC B60 (COMMERCIAL RED ANGUS)

HYALITE ON TARGET 936  
R MISS REVOLUTION 1009  
NJW 73S M326 TRUST 100W ET  
REMITALL RITA 91H

ACT BW	77
ADJ WW	508
ADJ YW	1112
WDA	

DAM INFO

PRO	S	HB	GM	CED	BW	WW	YW	MLK	ME	HP	CEM	ST	MB	YG	CW	REA	BF

50% AR 43.8% HP 6.2% HH ACT IMF 2.73 ACT REA 12.4

# CHAROLAIS/RED ANGUS BULLS



**54 TAC PEARL SNAP H156**

REG 4398105  
DOB 3/4/20  
TATTOO H156

LT RUSHMOHRE 8060 PLD  
**FF PEARL SNAP 770**  
BUTLER MS TURTON

TAC ENCLOSURE D169  
**TAC TAMARA F180**  
TAC MS TAMARA D189

LT RIO BRAVO 3181P  
LT BRENDA'S EASE 3055PLD  
TR PZC MR TURTON 0794 ET  
M&M MS STEALTH 0102  
5L BLOCKADE 2218-30B  
RIDGE AQUILA 836-456  
BIEBER ROLLIN DEEP Y118  
VF TAMARA A196-545

ACT BW (RATIO) **73** (105)  
ADJ WW (RATIO) **559** (104)  
ADJ YW (RATIO) **1221** (106)  
WDA **3.16**

CALVING EASE ★★  
DAM INFO AGE: 3 MPPA: 102 MATURE WT: 1134

PRO	S	HB	GM	CED	BW	WW	YW	MLK	ME	HP	CEM	ST	MB	YG	CW	REA	BF
-11	-33	22	8	-0.2	62	88	22	2	5	2	0	0.19	0.00	14	0.44	-0.05	
99%	99%	83%	95%	79%	39%	66%	75%	62%	99%	99%	99%	95%	20%	70%	4%	1%	

50% AR 50% CH      ADJ IMF (RATIO) **2.03** (79)      ADJ REA (RATIO) **13.3** (99)

Pearl Snap is a calving ease maternal Charolais. Really soft made complete bulls that should really click with a set of red cows.



**55 TAC PEARL SNAP H172**

REG 4398109  
DOB 3/5/20  
TATTOO H172

LT RUSHMOHRE 8060 PLD  
**FF PEARL SNAP 770**  
BUTLER MS TURTON

5L BLOCKADE 2218-30B  
**TAC MS GROUND SOW F174-A112**  
TAC GROUND SOW A112

LT RIO BRAVO 3181P  
LT BRENDA'S EASE 3055PLD  
TR PZC MR TURTON 0794 ET  
M&M MS STEALTH 0102  
5L DEFENDER 560-30Z  
5L OPAL 656-2218  
5L FULL THROTTLE 2237-340W  
3SCC BRANDY Y112

ACT BW (RATIO) **71** (103)  
ADJ WW (RATIO) **518** (96)  
ADJ YW (RATIO) **1073** (94)  
WDA **2.77**

CALVING EASE ★★  
DAM INFO AGE: 3 MPPA: 98 MATURE WT: 1124

PRO	S	HB	GM	CED	BW	WW	YW	MLK	ME	HP	CEM	ST	MB	YG	CW	REA	BF
-8	-32	25	8	0.1	68	98	19	2	5	1	0	0.20	0.00	15	0.47	-0.06	
99%	99%	80%	93%	84%	20%	43%	94%	58%	99%	99%	99%	94%	20%	67%	3%	1%	

50% AR 50% CH      ADJ IMF (RATIO) **3.10** (121)      ADJ REA (RATIO) **13.6** (101)



**FF PEARL SNAP 770**

**56 TAC PEARL SNAP H214**

REG Commercial  
DOB 3/9/20  
TATTOO H214

LT RUSHMOHRE 8060 PLD  
**FF PEARL SNAP 770**  
BUTLER MS TURTON

5L FULL THROTTLE 2237-340W  
**TAC A45**  
3SCC BRANDY Y45

LT RIO BRAVO 3181P  
LT BRENDA'S EASE 3055PLD  
TR PZC MR TURTON 0794 ET  
M&M MS STEALTH 0102  
5L LEGEND DESIGN 2415-7057  
5L SYBILLI 1593-2237  
BACLANDS NET WORTH 23U  
3SCC BRANDY S168

ACT BW (RATIO) **89**  
ADJ WW (RATIO) **443**  
ADJ YW (RATIO) **1015**  
WDA

CALVING EASE ★★  
DAM INFO AGE: 8 MATURE WT: 1120

PRO	S	HB	GM	CED	BW	WW	YW	MLK	ME	HP	CEM	ST	MB	YG	CW	REA	BF

50% AR 50% CH      ACT IMF **2.63**      ACT REA **14.4**

**57 TAC MOVIN DEEPER H307**

REG 4398777  
DOB 3/20/20  
TATTOO H307

BIEBER ROLLIN DEEP Y118  
**TAC MOVIN DEEPER D178**  
VF TAMARA A196-545

TR THE FIREMAN 9704 PLD  
**HACC TUFF AS FIRE 243 POL**  
3G'S IM TUFF ENOUGH

BIEBER ROOSEVELT W384  
BIEBER TILLY 399W  
LARSON MASTERPIECE 009  
LARSON TAMARA 545-556  
TR MR FIRE WATER 5792RET  
CC MS SUSPECT 321 PLD  
LT WIND ENERGY 3104 P  
3G'S PHEOBE 483 POL

ACT BW (RATIO) **96**  
ADJ WW (RATIO) **505**  
ADJ YW (RATIO) **1020**  
WDA **2.86**

CALVING EASE ★  
DAM INFO AGE: 9 MATURE WT: 1526

PRO	S	HB	GM	CED	BW	WW	YW	MLK	ME	HP	CEM	ST	MB	YG	CW	REA	BF
-9	-33	24	5	1.4	66	97	27	5	6	1	0	0.20	0.00	12	0.45	-0.06	
99%	99%	80%	99%	95%	25%	46%	28%	83%	98%	99%	99%	93%	20%	78%	4%	1%	

50% AR 50% CH      ADJ IMF **2.77**      ADJ REA **14.1**

**58 TAC UNCHARTED G236**

REG 4230328  
DOB 3/1/19  
TATTOO G236

CCC WC RESOURCE 417 P  
**WC UNCHARTED 7328 P**  
WC BRENDA 4035 P

RED BRYLOR SQUALL 230S  
**3SCC HANNAH X127**  
3SCC HANNAH U50S

LT RUSHMOHRE 8060 PLD  
WC CCC BLUE GIRL 1528 P  
WC CAPITAL GAIN 2220 P ET  
WC BRENDA 2005 P  
RED BRYLOR PASQUALE 213P  
RED CYT FANNY 15P  
KF RIGHT TIME 635  
BSKF HANNAH R264

ACT BW (RATIO) **85** (103)  
ADJ WW (RATIO) **495** (96)  
ADJ YW (RATIO) **975** (97)  
WDA **2.79**

CALVING EASE ★  
DAM INFO AGE: 11 MPPA: 94

PRO	S	HB	GM	CED	BW	WW	YW	MLK	ME	HP	CEM	ST	MB	YG	CW	REA	BF
89	65	24	11	1.3	78	104	18	-8	11	3	13	-0.01	-0.49	32	1.18	-0.08	
89%	78%	81%	75%	94%	3%	30%	96%	8%	52%	98%	79%	99%	1%	11%	1%	1%	

57.8% AR 42.2% CH      ADJ IMF (RATIO) **2.22** (94)      ADJ REA (RATIO) **14.3** (111)

Uncharted power bull. Virgin two-year-old. High growth, big REA, and carriers almost no back fat. What more can you ask out of a terminal sire?

# BLACK ANGUS BULLS



*Reference Sire*



**BALDRIDGE COMMAND C036**



A

**59 TAC TRANSFORMER H184**

REG 19992130  
DOB 03/06/20  
TATTOO H184  
CALVING EASE ★★

V A R Generation 2100  
**Flying V Transformer**  
Flying V Miss Pride 95Z  
Connealy Confidence 0100  
**D 0100 Lauren B453**  
D FP Lauren Z252

Connealy Consensus 7229  
Sandpoint Blackbird 8809  
S A V Bismarck 5682  
Flying V Miss Pride 11W  
Connealy Tobin  
Becka Gala of Conanga 8281  
Connealy Final Product  
D 860 Lauren P4300

**ACT BW (RATIO) 81 (100)**  
**ADJ WW (RATIO) 531 (100)**  
**ADJ YW (RATIO) 1296 (100)**

**DAM INFO AGE: 7 MATURE WT: 1200**

CED	BW	WW	YW	MLK	SEN	CW	MB	RE	FAT	\$M	\$W	\$F	\$G	\$B	\$C
10	0.8	58	107	22	-16	44	0.49	0.69	0.009	58	56	91	46	137	236
20%	40%	45%	40%	75%	60%	45%	60%	30%	50%	55%	50%	25%	50%	40%	40%

**100% ANGUS** **ADJ IMF (RATIO) 4.05 (100)** **ADJ REA (RATIO) 14.8 (100)**

H184 leads off the Angus division. B453 is the most moderate Angus female on the ranch while always weaning one of the biggest. She has had the lead bull in the sale 3 of the last 4 years; all being natural calves. H184 combines Consensus, Bismarck, Confidence, and Final Product in his pedigree.

**60 TAC COMMAND H77**

REG 19992135  
DOB 02/28/20  
TATTOO H77  
CALVING EASE ★★

EF Commando 1366  
**Baldridge Command C036**  
Baldridge Blackbird A030  
Sinclair Excellency 5X25  
**Tac Zara E118**  
BSAR Zara 071X

EF Complement 8088  
Riverbend Young Lucy W1470  
Hoover Dam  
Baldridge Blackbird X89  
N Bar Emulation EXT  
Ideal 4465 of 6807 4286  
Bsar United 210T  
Bear Mtn Zara 8071

**ACT BW (RATIO) 81 (104)**  
**ADJ WW (RATIO) 569 (111)**  
**ADJ YW (RATIO) 1243 (104)**

**DAM INFO AGE: 4 MATURE WT: 1080**

CED	BW	WW	YW	MLK	SEN	CW	MB	RE	FAT	\$M	\$W	\$F	\$G	\$B	\$C
0.9	61	108	24			33	0.49	0.42	0.028		59		41		
	45%	35%	40%	60%		75%	60%	75%	75%		45%		60%		

**100% ANGUS** **ADJ IMF (RATIO) 3.83 (111)** **ADJ REA (RATIO) 15.1 (110)**

Command was one of my favorites at stud in Wisconsin. Moderate, long bodied, deep. We don't have to make these cattle big in structure to get a 1000-pound carcass. Command is the type of bull we need more of in the industry. E118 is a direct daughter of Excellency, who sires true maternal Angus cows.

# BLACK ANGUS BULLS

## 61 TAC PAYWEIGHT PLUS H46

REG 19994800  
DOB 02/24/20  
TATTOO H46

Basin Payweight 1682  
**Basin Payweight Plus 6048**  
EXAR Royal Lass 2810

Baldrige Command C036  
**Tac MS F152-529**  
HB 529-30

Basin Payweight 006S  
21AR O Lass 7017  
Connealy Consensus 7229  
Exar Royal Lass 1067  
EF Commando 1366  
Baldrige Blackbird A030  
Plainview Lutton E102  
HB 375-35

ACT BW (RATIO)	78 (106)
ADJ WW (RATIO)	502 (99)
ADJ YW	

CALVING EASE ★★★

DAM INFO		AGE: 3	MATURE WT: 1140												
CED	BW	WW	YW	MLK	SEN	CW	MB	RE	FAT	SM	SW	SF	SG	SB	SC
0.5	58			32											
35%	45%			10%											

**100% ANGUS**      ACT IMF      4.15      ACT REA      11.9



**LOT 64**

Heifer bull combining two of my favorite ABS sires. Command and Payweight Plus.



*Reference Grand Sire*

**BASIN PAYWEIGHT 1682**

## 64 TAC PAYWEIGHT H399

REG Commercial  
DOB  
TATTOO H399

Basin Payweight 1682  
**Connealy 1682 3657**  
Polletta of Conanga 3657

Basin Payweight 006S  
21AR O Lass 7017  
Connealy Confidence 0100  
Polly of Conanga 721

ACT BW	65
ACT WW	479
ACT YW	1089

CALVING EASE ★★★

DAM INFO		AGE: 3	MATURE WT: 1140												
CED	BW	WW	YW	MLK	SEN	CW	MB	RE	FAT	SM	SW	SF	SG	SB	SC

**100% ANGUS**      ACT IMF      3.37      ACT REA      13.3

Lots 64 and 65 are heifer bulls sired by 3657 that are hard to tell apart. Very smooth made with a lot of look and style. H399's dam is a purebred but was in a multi pasture group and needs DNA pulled to be registered.



**LOT 65**

## 62 TAC PAYWEIGHT H467

REG 19992133  
DOB 04/07/20  
TATTOO H467

Basin Payweight 1682  
**Connealy 1682 3657**  
Polletta of Conanga 3657

Connealy Revelation 2353  
**D Rev Missy Chloe C517**  
D SS Missy Chloe A330

Basin Payweight 006S  
21AR O Lass 7017  
Connealy Confidence 0100  
Polly of Conanga 721  
Connealy Trustmark  
Ellete of Conanga 8412  
MOGCK Sure Shot  
D 6305 Missy Chloe Y157

ACT BW (RATIO)	99 (122)
ADJ WW (RATIO)	533 (104)
ADJ YW (RATIO)	1037 (97)

CALVING EASE ★

DAM INFO		AGE: 6	MATURE WT: 1400												
CED	BW	WW	YW	MLK	SEN	CW	MB	RE	FAT	SM	SW	SF	SG	SB	SC
4	4.0	60	103	28	-14	39	0.33	0.28	0.029	81	54	78	32	109	222
70%	95%	40%	45%	30%	55%	60%	75%	90%	75%	4%	60%	60%	85%	80%	55%

**100% ANGUS**      ADJ IMF (RATIO)      3.78 (110)      ADJ REA (RATIO)      14.5 (106)

Very stylish 1682 grandson. Connealy 3657 combines Payweight and Confidence. Maternal Power.

## 63 TAC PAYWEIGHT H122

REG 19994799  
DOB 03/02/20  
TATTOO H122

Basin Payweight 1682  
**Connealy 1682 3657**  
Polletta of Conanga 3657

Barstow Cash  
**Tac Juanada D112-603R**  
O C C Juanada 603R

Basin Payweight 006S  
21AR O Lass 7017  
Connealy Confidence 0100  
Polly of Conanga 721  
Sitz Dash 10277  
Barstow Queen W16  
O C C Glory 950G  
O C C Juanada 856F

ACT BW (RATIO)	74 (93)
ADJ WW (RATIO)	508 (101)
ADJ YW (RATIO)	

CALVING EASE ★★★

DAM INFO		AGE: 5	MATURE WT: 1500												
CED	BW	WW	YW	MLK	SEN	CW	MB	RE	FAT	SM	SW	SF	SG	SB	SC
-0.3	58			21											
20%	45%			80%											

**100% ANGUS**      ACT IMF      3.04      ACT REA      12.7

Have several of these Cash x 603R daughters walking the Sandhills. Made right with a maternal instinct that is fun to observe.

## 65 TAC PAYWEIGHT H330

REG 19992134  
DOB 03/22/20  
TATTOO H330

Basin Payweight 1682  
**Connealy 1682 3657**  
Polletta of Conanga 3657

SITZ Dash 11531  
**BVC Charlotte Jess DA 429**  
BVC Charlotte Jess IRM 217

Basin Payweight 006S  
21AR O Lass 7017  
Connealy Confidence 0100  
Polly of Conanga 721  
Sitz Dash 10277  
Sitz Barbaramere Jet 3149  
S A V Iron Mountain 8066  
BVC Charlotte Jess S 834

ACT BW (RATIO)	75 (93)
ADJ WW (RATIO)	495 (96)
ADJ YW (RATIO)	1113 (103)

CALVING EASE ★★★

DAM INFO		AGE: 7	MATURE WT: 1300												
CED	BW	WW	YW	MLK	SEN	CW	MB	RE	FAT	SM	SW	SF	SG	SB	SC
7	0.5	51	95	26	-3	37	0.65	0.24	0.077	85	51	84	42	126	249
45%	35%	70%	65%	40%	25%	65%	40%	95%	95%	2%	65%	40%	60%	55%	25%

**100% ANGUS**      ADJ IMF (RATIO)      3.72 (108)      ADJ REA (RATIO)      13.2 (96)

# SIMANGUS BULLS



**LOT 66**

*Reference Grand Sire*



**CCR SANTA FE 9349Z**



**LOT 67**

A

**66**

**TAC SANTA FE G937**

REG  
3861399

DOB  
9/20/19

TATTOO  
G937

CALVING EASE  
★ ★

CCR SANTA FE 9349Z  
SFG SANTA FE C558  
SFG MAGGIE Y27  
  
MOGCK FRONTMAN 1141  
FXSR 1141 HANNAH 5327C  
FXSR 904 HANNAH 3312A

S D S GRADUATE 006X  
CCR MS APPLE 9332W  
HOOKS SHEAR FORCE 38K  
SFG MAGGIE U63  
KESSLERS FRONTMAN R001  
MOGCK ENTELLO 1446  
COLEMAN REGIS 904  
FXSR 809 HANNAH 013X

ACT BW	86
ADJ WW	600
ADJ YW	

CE	BW	WW	YW	MCE	MLK	MWW	ST	DOC	CW	YG	MB	BF	RE	API	TI
12.6	-0.3	77.1	118.4	7.0	19.1	57.5	14.8	11.6	34.5	-0.17	0.26	-0.018	0.71	131.0	77.3
45%	35%	40%	45%	50%	80%	65%	50%	55%	45%	70%	60%	90%	40%	45%	50%

**1/2 SM 1/2 AN**

Leading off the Simmental division is a very functionally made Fall bull. Feed the steers and keep every heifer, these Santa Fe daughters are nice.

**67**

**TAC TRUSTEE H173**

REG  
3861386

DOB  
3/5/20

TATTOO  
H173

CALVING EASE  
★

CDI REVIVAL 370D  
CDI TRUSTEE 387F  
CDI MISS HOMETOWN 163C  
  
TAC REVISION C75 ET  
TAC REVISION E45  
KGH MISS BEYOND 384A

TJ MAIN EVENT 503B  
CDI MS YESTERDAY 29B  
CDI HOMETOWN 246A  
CDI MS XPECTATION 64Z  
BROWN JYJ REDEMPTION Y1334  
3SCC BRANDY Y112  
GCF BEYOND  
KGH 600 911J

ACT BW (RATIO)	86 (106)
ADJ WW (RATIO)	552 (103)
ADJ YW (RATIO)	1282 (110)

CE	BW	WW	YW	MCE	MLK	MWW	ST	DOC	CW	YG	MB	BF	RE	API	TI
8.7	2.4	86.2	133.8	4.8	25.3	66.7	17.3	9.9	34.5	-0.49	0.17	-0.090	1.15	126.8	78.9
90%	90%	15%	15%	85%	30%	20%	20%	80%	45%	2%	80%	10%	2%	55%	45%

**3/4 SM 1/4 AR**

ADJ IMF (RATIO) 2.37 (92) ADJ REA (RATIO) 16.94 (119)

Actual REA was 16.8 making him #1 of 22 contemporaries, as well as #2 of 24 YW. The only difference between lot 67 and 68 is color. These Trustee cattle are flat good and puppy dog tame. Hard muscled trucks.

# SIMANGUS BULLS



**LOT 68**

## 68 TAC TRUSTEE H182

REG  
3861398  
DOB  
3/6/20  
TATTOO  
H182

CDI REVIVAL 370D  
CDI TRUSTEE 387F  
CDI MISS HOMETOWN 163C  
MRL NORTH FACE 74B  
LAZYJ MS DONELLA 602D-419B  
RUST MISS 419B

TJ MAIN EVENT 503B  
CDI MS YESTERDAY 29B  
CDI HOMETOWN 246A  
CDI MS XPECTATION 64Z  
KOP TRUE NORTH 103Y  
MRL MISS 369X  
HOOK'S YUKON 80Y  
RED JCC SANDY 63S

ACT BW (RATIO)  
90 (108)  
ADJ WW (RATIO)  
526 (98)  
ADJ YW (RATIO)  
1203 (104)

CALVING EASE

DAM INFO AGE: 5 MATURE WT: 1380

CE	BW	WW	YW	MCE	MLK	MWW	ST	DOC	CW	YG	MB	BF	RE	API	TI
9.0	2.8	82.9	119.6	5.2	28.4	70.8	17.9	7.9	34.8	-0.62	0.19	-0.110	1.41	121.9	76.0
90%	90%	20%	40%	80%	10%	10%	15%	95%	45%	1%	75%	2%	1%	65%	55%

1/2 SM 1/2 AR

ADJ IMF (RATIO) 2.67 (104) ADJ REA (RATIO) 16.86 (119)

Actual REA was 16.7 making him #2 of 22 contemporaries. Black or Red? If it were me, I would keep him together with lot 67. I can just imagine a beautiful set of steers at 1600 lbs. ready to go to market.



**LOT 69**

## 69 TAC DIVIDEND H205

REG  
3861389  
DOB  
3/8/20  
TATTOO  
H205

CLRS AFTER SHOCK 604 A  
CLRS DIVIDEND 405D  
CLRS BONNIA 405 B

HOOK'S YELLOWSTONE 97Y  
HOOKS SARITA 4S  
GW PREMIUM BEEF 021TS  
CLRS ZINNIA 200 Z

ACT BW (RATIO)  
98 (116)  
ADJ WW (RATIO)  
647 (121)  
ADJ YW (RATIO)  
1250 (108)

CALVING EASE

DAM INFO AGE: 8 MATURE WT: 1430

CE	BW	WW	YW	MCE	MLK	MWW	ST	DOC	CW	YG	MB	BF	RE	API	TI
10.7	1.2	82.1	127.7	5.8	20.6	60.3	9.7	11.2	32.5	-0.20	0.37	-0.035	0.67	119.6	80.0
70%	65%	25%	25%	70%	70%	50%	95%	60%	55%	60%	35%	65%	50%	70%	40%

1/2 SM 1/2 AN

ADJ IMF (RATIO) 2.92 (114) ADJ REA (RATIO) 16.39 (116)

This bull is a powerhouse. Higher growth bull backed by a sappy In Focus cow.



**CLRS DIVIDEND 405D**

## 70 TAC DIVIDEND H163

REG  
3861371  
DOB  
3/5/20  
TATTOO  
H163

CLRS AFTER SHOCK 604 A  
CLRS DIVIDEND 405D  
CLRS BONNIA 405 B

HOOK'S YELLOWSTONE 97Y  
HOOKS SARITA 4S  
GW PREMIUM BEEF 021TS  
CLRS ZINNIA 200 Z

ACT BW (RATIO)  
82 (98)  
ADJ WW (RATIO)  
582 (109)  
ADJ YW (RATIO)  
1166 (100)

CALVING EASE

DAM INFO AGE: 10 MATURE WT: 1500

CE	BW	WW	YW	MCE	MLK	MWW	ST	DOC	CW	YG	MB	BF	RE	API	TI
13.1	-1.0	71.4	109.6	6.3	24.2	61.1	9.7	11.2	32.5	0.00	0.33	0.004	0.34	118.6	74.7
40%	25%	65%	65%	60%	35%	45%	95%	60%	55%	99%	45%	99%	95%	70%	60%

1/2 SM 1/2 AN

ADJ IMF (RATIO) 2.74 (107) ADJ REA (RATIO) 13.84 (98)

Ratied 109 WW, 107 IMF. He is worth a look.



**LOT 71**

## 71 TAC UNO MAS H58

REG  
3861384  
DOB  
2/26/20  
TATTOO  
H58

WLE UNO MAS X549  
HPF UNO MAS 4D  
TYLERTOWN MELTED

CNS DREAM ON L186  
SHAWNEE MISS 770P  
W/C WIDE TRACK 694Y  
FBFS YOU MELT ME 128Y  
GW RED COAT 099TS  
RYMO MISS T2 333N

ACT BW (RATIO)  
72 (93)  
ADJ WW (RATIO)  
502 (94)  
ADJ YW (RATIO)  
1158 (100)

CALVING EASE

DAM INFO AGE: 3 MATURE WT: 1100

CE	BW	WW	YW	MCE	MLK	MWW	ST	DOC	CW	YG	MB	BF	RE	API	TI
12.5	-0.4	61.9	94.9	6.0	20.5	50.5	12.4	12.2	11.1	-0.42	0.18	-0.098	0.59	117.3	67.7
50%	35%	90%	90%	65%	70%	95%	75%	45%	99%	10%	75%	4%	65%	75%	90%

3/4 SM 1/4 AR

ADJ IMF (RATIO) 2.64 (103) ADJ REA (RATIO) 14.32 (101)

Red Simmental with a snip of white on his nose. I really like this bull and he will leave you a super set of females. Uno Mas daughters are flat good.

# SIMANGUS BULLS



**LOT 72**

## 74 TAC PERSPECTIVE H207

REG 3861385  
DOB 3/8/20  
TATTOO H207

HOOK'S XPECTION 36X  
CDI PERSPECTIVE 238A  
CDI MS TRUMP 101Y

MR HOC BROKER  
TAC EXTRA NICE D168  
TAC NORTHERN IMPROVEMENT X11

GW PREDESTINED 701T  
HOOKS MIKA 141M  
NF TRUMP S582  
CDI MS TOP GUN 5U  
SVF STEEL FORCE S701  
JM BF H25

ACT BW (RATIO) 81 (98)  
ADJ WW (RATIO) 531 (99)  
ADJ YW (RATIO) 1149 (99)

CALVING EASE ★★  
DAM INFO AGE: 5 MATURE WT: 1270

CE	BW	WW	YW	MCE	MLK	MWW	ST	DOC	CW	YG	MB	BF	RE	API	TI
13.0	-0.5	71.2	107.3	6.1	17.3	53.0	12.9	6.9	26.1	-0.16	0.10	-0.043	0.39	116.1	69.5
40%	35%	65%	70%	65%	90%	85%	70%	95%	75%	70%	90%	50%	90%	75%	80%

3/4 SM 1/4 AN  
ADJ IMF (RATIO) 2.24 (87) ADJ REA (RATIO) 13.69 (96)

Lots 73-76 are very complete 238A sons. These Perspectives are all medium framed meat wagons.



**LOT 75**

## 75 TAC PERSPECTIVE H229

REG 3861377  
DOB 3/12/20  
TATTOO H229

HOOK'S XPECTION 36X  
CDI PERSPECTIVE 238A  
CDI MS TRUMP 101Y

TAC MS IN FOCUS A18

GW PREDESTINED 701T  
HOOKS MIKA 141M  
NF TRUMP S582  
CDI MS TOP GUN 5U

ACT BW (RATIO) 77 (91)  
ADJ WW (RATIO) 571 (107)  
ADJ YW (RATIO) 1253 (108)

CALVING EASE ★★  
DAM INFO AGE: 8 MATURE WT: 1460

CE	BW	WW	YW	MCE	MLK	MWW	ST	DOC	CW	YG	MB	BF	RE	API	TI
14.7	-2.2	74.0	116.6	6.7	20.0	68.7	15.3	11.2	25.0	-0.05	0.30	0.020	0.55	138.7	78.6
25%	15%	55%	50%	55%	75%	15%	45%	60%	80%	95%	50%	99%	70%	30%	45%

1/2 SM 1/2 AN  
ADJ IMF (RATIO) 2.72 (106) ADJ REA (RATIO) 14.46 (102)

## 72 TAC PAYWEIGHT PLUS H95

REG 3861374  
DOB 2/29/20  
TATTOO H95

BASIN PAYWEIGHT 1682  
BASIN PAYWEIGHT PLUS 6048  
EXAR ROYAL LASS 2810

LMF MOVIN FORWARD  
TAC SHEZA MOVIN A130  
THSF SHEZA DREAM S623

BASIN PAYWEIGHT 006S  
21AR O LASS 7017  
CONNEALY CONSENSUS 7229  
EXAR ROYAL LASS 1067  
TRIPLE C INVASION R47K  
LMF GODIVAS BEAUTYSTROKE  
CNS DREAM ON L186  
SVF SHEZA BEAUTY L901

ACT BW (RATIO) 82 (97)  
ADJ WW (RATIO) 549 (103)  
ADJ YW (RATIO) 1241 (107)

CALVING EASE ★★  
DAM INFO AGE: 8 MATURE WT: 1370

CE	BW	WW	YW	MCE	MLK	MWW	ST	DOC	CW	YG	MB	BF	RE	API	TI
14.2	-0.9	80.8	134.3	7.7	20.6	59.4	13.4	12.6	46.4	0.00	0.37	0.009	0.56	140.1	83.4
30%	25%	30%	15%	35%	70%	55%	65%	40%	15%	99%	35%	99%	70%	30%	25%

1/2 SM 1/2 AN  
ADJ IMF (RATIO) 3.03 (118) ADJ REA (RATIO) 14.26 (100)

Ratioed 118 for IMF making him #3 of 22 contemporaries. Grow them and grid them. They will bring back a premium.



**LOT 73**

## 73 TAC PERSPECTIVE H150

REG 3861379  
DOB 3/4/20  
TATTOO H150

HOOK'S XPECTION 36X  
CDI PERSPECTIVE 238A  
CDI MS TRUMP 101Y

MR HOC BROKER  
TAC MS BROKER E2  
TAC MS 1086

GW PREDESTINED 701T  
HOOKS MIKA 141M  
NF TRUMP S582  
CDI MS TOP GUN 5U  
SVF STEEL FORCE S701  
JM BF H25

ACT BW (RATIO) 80 (99)  
ADJ WW (RATIO) 521 (97)  
ADJ YW (RATIO) 1172 (101)

CALVING EASE ★★  
DAM INFO AGE: 4 MATURE WT: 1390

CE	BW	WW	YW	MCE	MLK	MWW	ST	DOC	CW	YG	MB	BF	RE	API	TI
12.5	-0.1	74.3	110.4	5.8	20.2	58.0	12.8	6.8	28.4	-0.18	0.19	-0.034	0.58	121.0	73.6
50%	40%	50%	60%	70%	75%	60%	70%	95%	65%	65%	75%	65%	65%	65%	65%

3/4 SM 1/4 AN  
ADJ IMF (RATIO) 2.69 (105) ADJ REA (RATIO) 14.93 (105)

One of the favorites on the sale. Power bull that is as deep and soggy as you can make one. Ratioed over 100 for YW, IMF, BF, and REA.

## 76 TAC PERSPECTIVE H233

REG 3861388  
DOB 3/12/20  
TATTOO H233

HOOK'S XPECTION 36X  
CDI PERSPECTIVE 238A  
CDI MS TRUMP 101Y

TAC IN FOCUS A45

GW PREDESTINED 701T  
HOOKS MIKA 141M  
NF TRUMP S582  
CDI MS TOP GUN 5U

ACT BW (RATIO) 91 (108)  
ADJ WW (RATIO) 609 (114)  
ADJ YW (RATIO) 1259 (108)

CALVING EASE ★★  
DAM INFO AGE: 8 MATURE WT: 1300

CE	BW	WW	YW	MCE	MLK	MWW	ST	DOC	CW	YG	MB	BF	RE	API	TI
13.3	-0.4	78.0	119.7	7.3	22.2	59.5	10.7	9.6	29.0	0.02	0.37	0.012	0.29	129.1	80.2
40%	35%	40%	40%	45%	55%	50%	90%	80%	65%	99%	35%	99%	99%	50%	40%

1/2 SM 1/2 AN  
ADJ IMF (RATIO) 2.81 (109) ADJ REA (RATIO) 13.76 (97)

# SIMANGUS BULLS

Reference Sire



TL LEDGER

Reference Dam



BBB SISTER FAITH 218A



LOT 77



LOT 79

A

77

TAC LEDGER H2

REG  
3861393  
DOB  
1/23/20  
TATTOO  
H2

PROFIT  
TL LEDGER  
MISS STAR ABOVE  
SFI SAVAGE D20  
BFJV MS SAVAGE F263  
D204

WS PILGRIM H182U  
WAGR PANARAMA 204Z  
FLYING B CUT ABOVE  
MISS STAR BRIGHT  
W/C LOADED UP 1119Y  
CAJS SWEET EMOTION 42Z

ACT BW (RATIO)  
63 (83)  
ADJ WW (RATIO)  
541 (101)  
ADJ YW (RATIO)  
1130 (97)

CALVING EASE

DAM INFO AGE: 3 MATURE WT: 1100

CE	BW	WW	YW	MCE	MLK	MWW	ST	DOC	CW	YG	MB	BF	RE	API	TI
11.0	1.1	67.8	95.4	6.2	22.0	56.6	14.6	5.8	9.0	-0.30	0.03	-0.086	0.27	119.7	68.9
70%	65%	75%	90%	65%	60%	70%	50%	99%	99%	30%	95%	10%	99%	70%	85%

3/4 SM 1/4 CS

ADJ IMF (RATIO) 2.61 (102) ADJ REA (RATIO) 10.97 (77)

Phenotypically one of the best on the entire sale with that perfect baldy face.

79

TAC LOCKDOWN H204

REG  
3864193  
DOB  
3/8/20  
TATTOO  
H204

REMINGTON LOCK N LOAD54U  
W/C LOCK DOWN 206Z  
G C F MISS NEW LEVELR206  
VANDES T714 OF MAG  
BBB SISTER FAITH 218A  
FLE MISS FAITH

REMINGTON ON TARGET 2S  
BAR15 MISS KNIGHT78E-51G  
IRONWOOD NEW LEVEL  
M A F EILEEN 0113  
O C C MAGNITUDE 805M  
COLLINS CVR MEYER R1  
STF AFFIRMED P44R  
MBG MISS BLK STAR

ACT BW  
87  
ADJ WW  
606  
ADJ YW  
1182

CALVING EASE

DAM INFO

CE	BW	WW	YW	MCE	MLK	MWW	ST	DOC	CW	YG	MB	BF	RE	API	TI
8.3	1.0	75.6	117.0	3.8	22.8	60.5	13.4	7.7	38.4	-0.12	0.30	-0.022	0.58	122.1	75.5
95%	65%	45%	45%	95%	50%	45%	65%	95%	30%	80%	50%	75%	65%	65%	60%

5/8 SM 3/8 AN

ACT IMF 2.95 ACT REA 15.2

Purchased this egg from BBB. Blazed face Lock Down son that is a long-made, eye appealing bull. Sister Faith stamps them with show ring style and great foot structure.

78

TAC PROFIT H1

REG  
3861401  
DOB  
1/21/20  
TATTOO  
H1

WS PILGRIM H182U  
PROFIT  
WAGR PANARAMA 204Z  
D523

CNS DREAM ON L186  
WS MARLA 276M  
MR HOC BROKER  
3C MELODY M668 BZ

ACT BW (RATIO)  
96 (115)  
ADJ WW (RATIO)  
585 (109)  
ADJ YW (RATIO)  
1315 (113)

CALVING EASE

DAM INFO AGE: 5 MATURE WT: 1370

CE	BW	WW	YW	MCE	MLK	MWW	ST	DOC	CW	YG	MB	BF	RE	API	TI
6.5	4.4	83.9	130.6	4.8	21.8	74.0	13.8	7.3	15.6	-0.08	0.48	0.037	0.64	127.3	80.2
99%	99%	20%	20%	85%	60%	3%	60%	95%	95%	90%	20%	99%	55%	55%	40%

1/2 SM 1/2 AN

ADJ IMF (RATIO) 3.47 (135) ADJ REA (RATIO) 15.14 (107)

Growthy Profit son. #1 YW, #1 IMF, and #5 REA of his contemporaries. January bull with a little extra age for someone wanting to turn him out right away.

80

TAC PROCLAMATION H183

REG  
3861370  
DOB  
3/6/20  
TATTOO  
H183

CCR COWBOY CUT 5048Z  
WS PROCLAMATION E202  
WS MISS SUGAR C4  
TAC MS EXCELLENCY B106

TRIPLE C SINGLETARY S3H  
CCR MS 4045 TIME 7322T  
CLRS GRADE-A 875 A  
WS ANISE A71

ACT BW (RATIO)  
89 (105)  
ADJ WW  
552  
ADJ YW  
1241

CALVING EASE

DAM INFO AGE: 7 MATURE WT: 1470

CE	BW	WW	YW	MCE	MLK	MWW	ST	DOC	CW	YG	MB	BF	RE	API	TI
12.2	0.5	81.3	127.9	7.8	25.7	65.9	10.2	13.7	42.6	-0.04	0.48	-0.016	0.44	133.2	84.4
50%	55%	25%	25%	35%	25%	20%	90%	25%	20%	95%	20%	90%	85%	40%	20%

1/2 SM 1/2 AN

ADJ IMF (RATIO) 2.76 (100) ADJ REA (RATIO) 14.26 (100)

Lots 80 and 81 are sired by Proclamation who is very popular in the breed right now. Very balanced set of EPDs and are both backed by Excellency daughters. Growth and carcass.



# SIMANGUS BULLS

Reference Sire



**WS PROCLAMATION E202**

## 83 TAC XPECTATION H200



REG 3861390  
DOB 3/7/20  
TATTOO H200  
CALVING EASE ★★

GW PREDESTINED 701T  
HOOK'S XPECTATION 36X  
HOOKS MIKA 141M

ELM-MOUND/GS EO D336  
TAC MS MONEY F187-D133  
TAC MS MONEY D133-B344

G A R PREDESTINED  
GW MISS LUCKY STRIKE 363  
HOOKS SHEAR FORCE 38K  
HOOKS IRISH MAXINE 29K  
W/C EXECUTIVE ORDER 8543B  
HILB DIRECT ME BABY A427  
TAC A191  
TAC MS MONEY B344

ACT BW (RATIO) 92 (117)  
ADJ WW (RATIO) 547 (102)  
ADJ YW (RATIO) 1255 (108)

DAM INFO														AGE: 3	
CE	BW	WW	YW	MCE	MLK	MWW	ST	DOC	CW	YG	MB	BF	RE	API	TI
10.6	0.3	76.9	119.1	5.3	25.1	60.8	18.3	12.8	22.2	-0.34	0.32	-0.059	0.77	138.5	79.1
75%	50%	40%	40%	80%	30%	45%	15%	40%	85%	20%	45%	35%	30%	30%	45%

5/8 SM 1/4 AN 1/8 AR    ADJ IMF (RATIO) 2.44 (95)    ADJ REA (RATIO) 14.98 (106)

Biggest framed bull of the offering. YW Ratio is 108 making him the fourth heaviest of the Simmentals backed by a nice EO first calf heifer.

## 81 TAC PROCLAMATION H213



REG 3861392  
DOB 3/9/20  
TATTOO H213  
CALVING EASE ★★

CCR COWBOY CUT 5048Z  
WS PROCLAMATION E202  
WS MISS SUGAR C4

TAC MS EXCELLENCY B110

TRIPLE C SINGLETARY S3H  
CCR MS 4045 TIME 7322T  
CLRS GRADE-A 875 A  
WS ANISE A71

ACT BW (RATIO) 90 (106)  
ADJ WW (RATIO) 508 (95)  
ADJ YW (RATIO) 1170 (101)

DAM INFO														AGE: 7	
CE	BW	WW	YW	MCE	MLK	MWW	ST	DOC	CW	YG	MB	BF	RE	API	TI
11.5	0.9	79.3	120.8	7.3	23.9	82.5	15.0	15.3	39.0	-0.26	0.57	-0.041	0.87	146.2	85.7
60%	60%	35%	40%	45%	40%	1%	50%	15%	30%	40%	10%	50%	15%	20%	20%

1/2 SM 1/2 AN    ADJ IMF (RATIO) 3.27 (127)    ADJ REA (RATIO) 15.61 (110)



**LOT 84**

A

## 84 TAC XPECTATION H180

REG 3861395  
DOB 3/6/20  
TATTOO H180  
CALVING EASE ★★

GW PREDESTINED 701T  
HOOK'S XPECTATION 36X  
HOOKS MIKA 141M

TAC MS CLASSIC E224

G A R PREDESTINED  
GW MISS LUCKY STRIKE 363  
HOOKS SHEAR FORCE 38K  
HOOKS IRISH MAXINE 29K

ACT BW (RATIO) 81 (99)  
ADJ WW (RATIO) 506 (94)  
ADJ YW (RATIO) 1133 (98)

DAM INFO														AGE: 4		MATURE WT: 1350	
CE	BW	WW	YW	MCE	MLK	MWW	ST	DOC	CW	YG	MB	BF	RE	API	TI		
12.3	-0.8	66.5	99.8	5.7	25.4	76.7	19.2	13.6	24.6	-0.38	0.37	-0.085	0.74	137.8	74.0		
50%	30%	80%	85%	70%	25%	2%	10%	30%	80%	15%	35%	10%	35%	30%	65%		

3/8 SM 5/8 AN    ADJ IMF (RATIO) 2.55 (99)    ADJ REA (RATIO) 14.76 (104)

Very even numbered hybrid.

Reference Sire



**HOOKS XPECTATION 36X**

## 82 TAC XPECTATION H208



REG 3861857  
DOB 3/8/20  
TATTOO H208  
CALVING EASE ★★

GW PREDESTINED 701T  
HOOK'S XPECTATION 36X  
HOOKS MIKA 141M

TAC MS DURHEIM F15-D233

G A R PREDESTINED  
GW MISS LUCKY STRIKE 363  
HOOKS SHEAR FORCE 38K  
HOOKS IRISH MAXINE 29K

ACT BW (RATIO) 78 (102)  
ADJ WW (RATIO) 590 (106)  
ADJ YW (RATIO) 1220 (107)

DAM INFO														AGE: 3		MATURE WT: 1100	
CE	BW	WW	YW	MCE	MLK	MWW	ST	DOC	CW	YG	MB	BF	RE	API	TI		
11.2	-0.1	76.2	118.3	5.7	26.6	77.0	20.0	13.6	23.6	-0.28	0.56	-0.028	0.86	156.1	85.2		
65%	40%	45%	45%	70%	20%	2%	4%	30%	80%	35%	15%	75%	20%	10%	20%		

3/8 SM 1/4 AR 1/4 CS 1/8 AN    ADJ IMF (RATIO) 2.61 (139)    ADJ REA (RATIO) 15.49 (110)

Xpectation has really clicked in our program. We calved our first set of daughters and are all in with him. They are flat good. Perfect udders, true maternal instinct, and easy keepers. This son is also backed by 281Z, one of the best hybrid cows on the ranch.



# SIMANGUS BULLS

## Reference Sire



**ELM-MOUND/GS EO D336**



**LOT 87**

**85 TAC EO H430**

REG 3861382 W/C EXECUTIVE ORDER 8543B W/C UNITED 956Y MISS WERNING KP 8543U  
 DOB 4/1/20 ELM-MOUND/GS EO D336 GLS NEW DIRECTION X184 SS BABYS BREATH P035  
 TATTOO H430 X372

CALVING EASE ★★

CE	BW	WW	YW	MCE	MLK	MWW	ST	DOC	CW	YG	MB	BF	RE	API	TI
10.8	0.0	70.9	111.3	5.8	22.7	72.1	13.7	10.0	19.3	-0.26	0.07	-0.067	0.45	114.1	69.2
70%	40%	65%	60%	70%	50%	5%	60%	80%	90%	40%	95%	25%	85%	80%	85%

1/2 SM 3/8 AR 1/8 CS    ADJ IMF (RATIO) 2.1 (82)    ADJ REA (RATIO) 13.98 (99)

EO is a multi-purpose sire that throws growthy calves that also make front end replacement females.

**87 TAC HARD DRIVE H322**

REG 4398107 BIEBER HARD DRIVE Y120 LACY GOLD BAR 8123 BIEBER LAURA 158W UBAR GRAND PRIX 102 K F GAMMER 340  
 DOB 3/21/20 2RJL HARD DRIVE F822 2RJL GAMMER S601  
 TATTOO H322 COMMERCIAL

CALVING EASE ★★

CE	BW	WW	YW	MCE	MLK	MWW	ST	DOC	CW	YG	MB	BF	RE	API	TI

1/4 SM 3/4 AR    ADJ IMF 2.64    ADJ REA

This bull is long bodied and great footed with that herd bull look.

A



**LOT 86**

**88 TAC BULLSEYE G11**

REG 3692516 REMINGTON LOCK N LOAD54U REMINGTON ON TARGET 2S BAR15 MISS KNIGHT78E-51G W/C BULLSEYE 3046A GP WALLACE 016 WAGR DREAM CATCHER 03R MISS WERNING KP 8543U MISS WERNING 534R GW RED COAT 099TS RYMO MR REDCOAT R33Y TAC RED COAT E103 RYMO MISS T2 333N HATS LINDA 6R2

CALVING EASE ★★

CE	BW	WW	YW	MCE	MLK	MWW	ST	DOC	CW	YG	MB	BF	RE	API	TI
16.1	-3.2	53.4	80.5	6.7	15.9	42.5	14.1	13.1	12.5	-0.50	0.08	-0.087	0.91	119.9	64.0
15%	10%	99%	99%	55%	95%	99%	60%	35%	99%	2%	95%	10%	15%	70%	95%

3/4 SM 1/4 AR    ADJ IMF (RATIO) 1.89 (100)    ADJ REA (RATIO) 12.97 (100)

Two-year-old bull that is long bodied and moderate. He could lead the Simmental division. He is not a virgin but will be trich tested.

**86 TAC SURETY H231**

REG 3861378 TAC SECURITY D56 5L BLOCKADE 2218-30B LAZYJ MS BRIER 494-976 GP WALLACE 016  
 DOB 3/10/20 TAC SURETY F223 GP WALLACE 016 RIDGE AQUILA 836-456 LSF TAKEOVER 9943W  
 TATTOO H231 TAC AQUILA C308-456 TAC A191 TBLC MISS 605 CHEYENNE 191 MEYER RANCH 734 TAC MS MONEY E358 TAC MS MONEY B344 TAC MISS MONEY W103

CALVING EASE ★★

CE	BW	WW	YW	MCE	MLK	MWW	ST	DOC	CW	YG	MB	BF	RE	API	TI
10.0	-0.9	60.9	94.8	4.6	19.5	50.3	15.7	14.0	21.9	-0.09	0.32	-0.008	0.41	113.3	68.0
80%	25%	95%	90%	85%	80%	95%	40%	25%	85%	90%	45%	95%	90%	80%	85%

1/4 SM 3/4 AR    ADJ IMF (RATIO) 2.21 (86)    ADJ REA (RATIO) 14.93 (105)

Surety goes back to 456 who produced for us until she was 18. Cows like that don't come around every day.

# ATA CATTLE

Annual Bull and Female Sale  
 THURSDAY - 12:00 PM  
 April 1, 2021  
 WEST POINT LIVESTOCK / WEST POINT, NE

# A TA CATTLE

*The Albrecht Family*



**TA CATTLE**  
502 20 Road  
Thurston, NE 68062

**ATA CATTLE** **THURSDAY - 12:00 PM**  
*Annual Bull & Female Sale* **APRIL 1, 2021**  
WEST POINT LIVESTOCK / WEST POINT, NE



**YOUR *One Stop* BULL SHOP**