

YOUR ONE STOP
BULL SHOP



A TA CATTLE

ANNUAL BULL & FEMALE SALE / THURSDAY, APRIL 2, 2020

12:00 PM / WEST POINT LIVESTOCK / WEST POINT, NEBRASKA

RED ANGUS - BLACK ANGUS - SIMMENTAL - CHAROLAIS CROSS



Fellow Cattle Producers –

Welcome to our annual bull and female sale. We would like to thank our returning customers for their continued support. To our new customers – we look forward to helping you find cattle that are the right fit for your program.

When we began selling bulls, it was primarily Red Angus that we had to offer. Through the years, we have been sampling genetics from different breeds. What is the benefit of doing this? It has been found that crossbreeding can improve fertility, milk production, calf vigor, growth, animal health, increase feed efficiency, and reduce input costs. There is not one breed out there that excels at all traits that affect profitability. On the maternal side of things, crossbreeding can offer a 6% higher calving rate, a 4% higher survival rate, a 4% higher calf survival rate, an 8% increase in efficiency, a 38% increase in longevity, and a 23% increase in lifetime productivity. Looking at the calf side, crossbreeding has shown a 5% increase in weaning weight and a 6% increase in post-weaning gain. At the end of the day, all of these numbers mean more dollars in your pocket. As a seedstock producer, utilizing more breeds and crossbreeding gives us more options in finding the right fit for your program, rather than pushing genetics from one breed that might not work for you.

Year after year, our goal here at TA Cattle has remained the same—to bring you genetics that work in every aspect of cattle production. We want them to perform for you from pasture to plate. With that being said, that is why it is so important to know where your goals are so we can help you decide which bull fits your program the best. No one wants to admit this, but every breed of cattle has its flaws. We acknowledge this and strive to be as upfront as possible in helping you with the direction you are headed in.

We would be more than happy to answer any questions you might have and look forward to seeing you at the sale.

Thank you
TA CATTLE



welcome



Terry & Julie Albrecht
1905 H Avenue
Thurston, NE 68062
Cell: (402) 922-1001



Andy & Abbie Albrecht
Atwood & Ariat
45212 861st Road
Bassett, NE 68714
Home: (402) 244-5245
Cell: (402) 922-1000



Travis & Lexi Albrecht
Taryn, Amelia, & Anson
502 20 Road
Thurston, NE 68062
Cell: (402) 922-1800

GENERAL INFORMATION

SALE LOCATION

West Point Livestock Auction

839 South Colfax | West Point, NE 68788

Brian Brester.....402-750-5821

SALE DAY CONTACTS

Terry Albrecht.....402-922-1001

Andy Albrecht.....402-922-1000

Travis Albrecht.....402-922-1800

AUCTIONEER

Jon Schaben.....712-263-0755

RINGMEN

Chris Beutler, Midwest Messenger.....402-380-8244

Tom Rooney, Midwest Marketer.....515-491-6025

SPECIAL GUESTS

Berrett Simon, Red Angus Association.....316-452-1792

Myron Benes.....402-741-2040

Kacey Jacobson, Top Dollar Angus.....701-391-4646

HERD VETERINARIANS

Pender-Emerson Vet Clinic.....402-695-2202

Drs. James Albrecht and Melissa Heberer

CATALOG & WEB DESIGN

Hannah Shroyer, Design Unbridled.....402-841-4216

ACCOMMODATIONS

Horizon Inn and Suites.....402-372-1959

Super 8.....402-372-3998

ANNOUNCEMENTS

Announcements from the block take precedence over the information in this catalog.

CATTLE VIEWING

Cattle can be viewed online at www.dvauction.com If you would like to view them in person, call Travis to arrange a time.

ONLINE BIDDING

Visit DVAuction.com before April 1, 2020 to sign up for online bidding. The sale will be broadcast live on DVAuction.com.

DVAuction
Broadcasting Real-Time Auctions



TA CATTLE

ANNUAL BULL & FEMALE SALE

THURSDAY – 12:00 PM

APRIL 2, 2020

WEST POINT LIVESTOCK / WEST POINT, NE

RETAINED INTEREST

We are retaining 1/2 interest in all bulls in the sale. We are selling the remaining 1/2 interest, full possession, and full salvage value on these bulls. This option gives TA Cattle the option to collect, use, and market semen from the bull and does not restrict the purchaser from doing the same. This collection, unless agreed otherwise, would be done at the expense of TA Cattle, at the buyer's convenience. Also at the time of purchase, the highest bidder on a retained interest bull may elect to purchase exclusive semen rights for 100% of the purchase price in addition to the purchased price on retained bulls. If a buyer elects to purchase exclusive semen rights, TA Cattle interest then becomes in herd use only, but TA Cattle retains all rights to use the bull within their herd.

FIRST BREEDING SEASON GUARANTEE

All bulls selling for \$3000 or more are guaranteed for the first breeding season. A breeding season is defined as the 90 day period following the first turnout of the bull. If a replacement bull is available, he will be provided or if the buyer prefers, credit toward one bull will be given in the following sale, less salvage value of the injured bull. All injured bulls must be diagnosed by a veterinarian. Please notify us as soon as possible should injury occur and prior to the injured bull being sold for salvage.

VACCINATION RECORD

All cattle have been vaccinated, starting at 30 days of age, at grass turn out, and again at pre-weaning and post-weaning. They were poured and dewormed. Vaccinations include 7-way clostridial, IBR, BVD, P13, BRSV, haemophilus somnus, and pasturellas. Any positive test results will be noted with EPDs throughout the catalog. The open heifers have also been Bangs vaccinated. The bulls and heifers have had their pre-breeding shot-Express FP 5-VL5. If you would like specific details on products used please give us a call. The bulls will be sold as guaranteed breeders according to the sale terms and conditions of the RAAA. Load out can be done anytime during the sale after settlement.

DELIVERY

Free delivery up to 300 miles. Any bulls remaining will be hauled back to TA Cattle's feedlot and boarded free of charge until April 21. After that there will be a \$3.50/hd/day feed charge until they are picked up or delivered. If you would like TA Cattle to feed and breed the open heifers, let us know right after the sale so arrangements can be made. If you do not need our services, then heifers must be picked up sale day or the couple days following at West Point Livestock.



CALVING EASE STAR RATING

- ★★★★ Sure shot calving ease
- ★★★ All cows and most heifers
- ★★ Calve easy on cows
- ★ Recommended for cows



RED ANGUS ASSOCIATION GUIDE TO EPD'S

HB HerdBuilder Index - Need bulls for developing a profitable cowherd and maximizing the value of marketed progeny? Select a bull with a high HB value.

GM GridMaster Index - If you market all of your calf crop and want to increase the value of that calf crop, select a bull with a high GM value to maximize your profit.

CED Calving Ease Direct - Breeding Heifers? Select bulls with a high CED to increase the probability that the heifers will calve unassisted.

BW Birth Weight - Predicts differences in birth weight. BW is included in the CED EPD, so simplify your decisions by selecting bulls based on CED instead of BW.

WW Weaning Weight and YW Yearling Weight - Predicts differences in weight at weaning and yearling. While selection based on these growth measures can increase your payweight, be cautious what the bull's other EPDs are.

Milk Milk - Predicts differences in weaning weight of daughter's progeny due to milk production.

ME Maintenance Energy - Selecting bulls with a lower ME EPD will decrease the amount of feed his daughters will require to maintain body weight.

HPG Heifer Pregnancy - Retaining heifers? Select bulls with a high HPG to increase the percentage of exposures that result in a calving observation.

CEM Calving Ease Maternal - Another number to pay attention to if you are retaining heifers. Selecting bulls with a high CEM will increase the probability of those daughters calving unassisted.

STAY Stayability - The most important trait if your goal is developing cows that stay productive, thus increasing your profitability. Bulls that have a high Stay EPD are expected to sire daughters that remain productive in the herd until at least 6 years of age.

MARB Marbling Score - Select bulls with high MARB EPD to increase the number of progeny that grade Choice or Prime.

YG Yield Grade - Marketing calves on a grid? Placing selection pressure on YG EPD will decrease the number of YG discounts on gridmarketed progeny.

CW Carcass Weight - Selecting bulls with a high CW EPD will increase the weight of the hanging carcass, which directly impacts revenue.

REA Rib Eye Area - Need to add muscle? Select bulls with a high REA EPD to increase rib eye area, which favorably increases Yield Grade.

BF Backfat - Need to reduce waste in carcasses? Select bulls with a low FAT EPD to reduce backfat, which favorably increases Yield Grade.



SIMMENTAL ASSOCIATION GUIDE TO EPD'S

Calving Ease (CE): Percent of unassisted births when used on heifers.

Birth Weight (BW): Pounds of birth weight.

Weaning Weight (WW): Pounds of weaning weight.

Yearling Weight (YW): Pounds of yearling weight.

Maternal Calving Ease (MCE): Percent of unassisted births in first-calving daughters.

Milk (MLK): Pounds of weaning weight due to milk.

Maternal Weaning Weight (MWW): Pounds of weaning weight due to milk and growth.

Yield Grade (YG): Yield grade score.

Carcass Weight (CW): Pounds of carcass weight.

Marbling (MRB): Marbling score. Back Fat (BF): Inches of backfat.

Ribeye Area (REA): Square inches of ribeye.

All-Purpose Index (API): Dollars per cow exposed under an all-purpose-sire scenario. (See below for more details.)

Terminal Index (TI): Dollars per cow exposed under a terminal-sire scenario (See below for more details.)

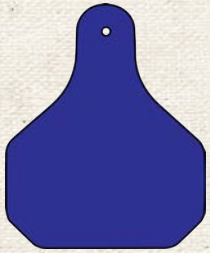
\$Indexes: Though EPDs allow for the comparison of genetic levels for many economically important traits, they only provide a piece of the economic puzzle. That's where \$ indexes come in. Through well conceived, rigorous mathematical computation, \$ indexes blend EPDs and economics to estimate an animal's overall impact on your bottom line. The same technology that led to the dramatic progress in swine, poultry and dairy genetics over the last several decades was used to develop the following \$ indexes:

- **All-Purpose Index (API):** Evaluates sires for use on the entire cow herd (bred to both Angus first-calf heifers and mature cows) with the portion of their daughters required to maintain herd size retained and the remaining heifers and steers put on feed and sold grade and yield.
- **Terminal Index (TI):** Evaluates sire for use on mature Angus cows with all offspring put on feed and sold grade and yield.

Using API and TI: First, determine which index to use; if you're keeping replacements use API, if not, TI. Then, just as with EPDs, zero in on the unit difference between bulls. (As described above, index units are in dollars per cow exposed.) The difference can be used to determine how much a bull is worth compared to another. Or, put another way, how much you can pay for one bull compared to another. For example, when buying an all-purpose type sire, you can quickly figure a bull scoring +100 for API is worth an extra \$6,000 over a +50 bull if both are exposed to 30 cows over 4 years ($\$50 \text{ diff.} \times 30 \text{ hd.} \times 4 \text{ yr.} = \$6,000$). A percentile-ranking chart is required to determine where a bull's index value ranks him relative to other bulls in the breed. For percentile rankings or more detailed information about EPDs and \$ indexes visit www.simmental.org.

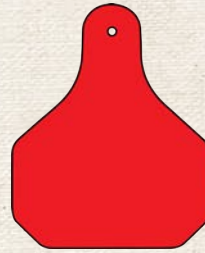
COMMERCIAL HEIFERS

Moderate group of heifers, that are going to make fantastic momma cows. I don't think a guy could go wrong with any of these sire groups. All proven herd sires that bring great mothering ability, udder suspension, and teat size. These are the kind that will stay in the herd for years and pay for themselves quickly.



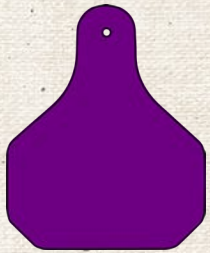
BLUE TAGS **20 HEAD**

Large Frame
Char/Red Angus



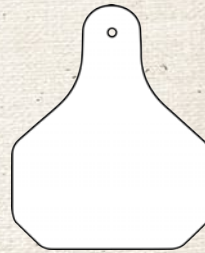
RED TAGS **8 HEAD**

Moderate Frame
Red Angus



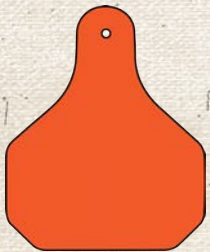
PURPLE TAGS **23 HEAD**

Moderate to Large Frame
Red Angus



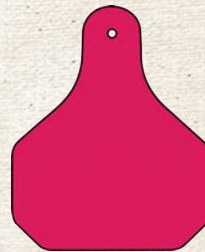
WHITE TAGS **9 HEAD**

Moderate to Large Frame
Angus Influenced



ORANGE TAGS **18 HEAD**

Moderate to Large Frame
Red Angus



PINK TAGS **22 HEAD**

Moderate to Large Frame
Simmental Influenced

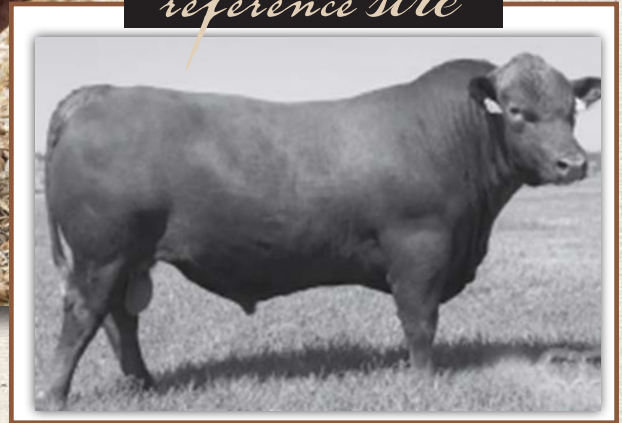
TWO-YEAR OLD and FALL 18-MONTH OLD BULLS

Sell as lots 1-13

Starting the sale with two-year old and aged fall bulls. They are an easy feeding set of bulls that will go out and get a big group bred up tight for their new owner. All the work is done, buy with confidence.



reference sire



BROWN RED OAK A7639

1 TAC RED OAK F482

REG 4056090
DOB 04/02/18
TAT F482
CALVING EASE ★★★★★

HUST CHIEF SEQUOYA R336 BROWN RED OAK A7639 BROWN MS P707 Y7686	CCF SEQUOYA 0361 LCC REBELLA NA123 BECKTON NEBULA P P707 BROWN MS MULBERRY W7890 BIEBER ROOSEVELT W384 BIEBER TILLY 399W LARSON MASTERPIECE 009 LARSON TAMARA 545-556
--	--

BIEBER ROLLIN DEEP Y118
TAC TAMARA D181
VF TAMARA A196-545

ACT BW: 57 / 81 205 WT: 528 / 99 365 WT: 1175 / 103

HB	GM	CED	BW	WW	YW	MLK	ME	HP	CEM	ST	MB	YG	CW	REA	BF
198	48	16	-4.2	61	97	30	1	10	9	18	0.51	0.17	16	-0.10	0.04
10%	42%	8%	6%	38%	36%	3%	65%	66%	17%	18%	23%	87%	69%	78%	88%

100% AR ADJ IMF: 3.18 / 87 ADJ REA: 12.72 / 106
WDA: 2.79 DAM'S MPPA: 100

2 TAC BOURNE F59

REG 4232028
DOB 02/20/18
TAT F59
CALVING EASE ★★★★★

5L ADVANTAGE 3267-221Y 5L BOURNE 117-48A 5L ROXIE 854-117	BUF CRK THE RIGHT KIND U199 5L ADINA 195-3267 5L SIGNATURE 5615 XXX ROXIE 854 MR
--	---

A45
3SCC BRANDY Y45

BADLANDS NET WORTH 23U
3SCC BRANDY S168

ACT BW: 66 / 205 WT: 432 / 365 WT: 1073 /

HB	GM	CED	BW	WW	YW	MLK	ME	HP	CEM	ST	MB	YG	CW	REA	BF

50% AR 50% COMMERCIAL ADJ IMF: 3.13 ADJ REA: 12.5
WDA: DAM'S MPPA:

3 TAC ENCLOSURE F446

REG
4056028
DOB
03/28/18
TAT
F446
CALVING EASE
★★★

5L BLOCKADE 2218-30B
TAC ENCLOSURE D169
RIDGE AQUILA 836-456

5L NORSEMAN KING 2291
BIEBER DURHEIM 281Z
BD3P DURHEIM 560

5L DEFENDER 560-30Z
5L OPAL 656-2218
GLACIER PIONEER 939
LONK AQUILA H836
VGW KING OF THE WEST
NORSEMAN 1312 PJM
LCC SOUTHERN KING 1765K
DURHEIM 952

ACT BW: 78 / 99 205 WT: 498 / 90 365 WT: 841 / 76

HB	GM	CED	BW	WW	YW	MLK	ME	HP	CEM	ST	MB	YG	CW	REA	BF
129	44	11	-1.1	41	53	20	-6	9	5	14	0.33	-0.10	-11	0.18	0.01
93%	98%	72%	56%	97%	99%	83%	13%	80%	89%	78%	64%	2%	99%	18%	24%

96.9% AR 3.1% XX

ADJ IMF: 3.05 / 83 ADJ REA: 12.33 / 99
WDA: 2.31 DAM'S MPPA: 98



LOT 3

reference sire



100% AR

TAC A191

REG
1655678

HXC CONQUEST 4405P
LSF TAKEOVER 9943W
LSF WIDELOAD R5014 U8061

TBLC CHEYENNE 605
TBLC MISS 605 CHEYENNE 191
TBLC MISS TANK 678

BECKTON JULIAN GG B571
HXC ELLIE MAY MA638
MESSMER PACKER S008
LSF WIDELOAD N3195 R5014
LCC CHEYENNE B221L
TBLC FAYET410
CRSA 6X
TBLC MS COLT 204G 23P

HB	GM	CED	BW	WW	YW	MLK	ME	HP	CEM	ST	MB	YG	CW	REA	BF
157	50	15	-4.5	63	99	16	0	12	6	13	0.78	0.22	16	-0.19	0.05
68%	13%	21%	6%	32%	36%	92%	51%	41%	67%	84%	4%	93%	64%	87%	90%



LOT 4



LOT 5

4 TAC TAKEOVER F820



REG
4101724
DOB
09/10/18
TAT
F820
CALVING EASE
★★★

LSF TAKEOVER 9943W
TAC A191
TBLC MISS 605 CHEYENNE 191

BROWN JYJ REDEMPTION Y1334
TAC BRANDY C144-Y112 ET
3SCC BRANDY Y112

HXC CONQUEST 4405P
LSF WIDELOAD R5014 U8061
TBLC CHEYENNE 605
TBLC MISS TANK 678
BECKTON NEBULA P P707
JYJ MS JOLENE W16
3SCC ZEPPLIN S99
3SCC BRANDY R44

ACT BW: 61 / 94 205 WT: 620 / 365 WT: /

HB	GM	CED	BW	WW	YW	MLK	ME	HP	CEM	ST	MB	YG	CW	REA	BF
169	49	14	-3.3	60	100	25	1	10	7	15	0.57	0.17	23	-0.06	0.04
53%	26%	32%	14%	42%	30%	35%	65%	61%	42%	62%	14%	88%	40%	69%	82%

100% AR

ADJ IMF: / ADJ REA: /
WDA: / DAM'S MPPA: 103

5 TAC TAKE ALL F808

REG
4101730
DOB
09/15/18
TAT
F808
CALVING EASE
★★★

LSF TAKEOVER 9943W
TAC A191
TBLC MISS 605 CHEYENNE 191

TAC SHOOTER A435
TAC C294-227Z
BIEBER TORYANNA 227Z

HXC CONQUEST 4405P
LSF WIDELOAD R5014 U8061
TBLC CHEYENNE 605
TBLC MISS TANK 678
BIEBER H HUGHES W109
OLC ANGELA R435
LSF TAKEOVER 9943W
BIEBER TORYANNA 317W

ACT BW: 66 / 103 205 WT: 682 / 106 365 WT: /

HB	GM	CED	BW	WW	YW	MLK	ME	HP	CEM	ST	MB	YG	CW	REA	BF
158	48	15	-3.6	62	95	24	1	11	7	14	0.55	0.13	17	-0.03	0.03
70%	38%	15%	11%	33%	43%	46%	62%	54%	49%	79%	17%	66%	63%	62%	73%

100% AR

ADJ IMF: / ADJ REA: /
WDA: 0.00 DAM'S MPPA: 99

6 TAC TAKEOVER F810

REG 4101972
 DOB 09/12/18
 TAT F810
 CALVING EASE ★★

LSF TAKEOVER 9943W
TAC A191
 TBLC MISS 605 CHEYENNE 191

BADLANDS NET WORTH 23U
3SCC BRANDY Y45
 3SCC BRANDY S168

HXC CONQUEST 4405P
 LSF WIDELOAD R5014 U8061
 TBLC CHEYENNE 605
 TBLC MISS TANK 678
 PFRR SHAO 607
 BADLANDS MEDORA 406
 K F BANDOLIER 814
 RRM MISS BASIN 0545 4008

ACT BW: 67 / 100 205 WT: 602 / 94 365 WT: /

HB	GM	CED	BW	WW	YW	MLK	ME	HP	CEM	ST	MB	YG	CW	REA	BF
174	48	11	-1.2	57	85	21	0	12	6	17	0.70	0.14	14	-0.08	0.04
43%	36%	76%	54%	53%	68%	74%	50%	31%	81%	36%	4%	76%	76%	75%	84%

ADJ IMF: / ADJ REA: /
 WDA: 0.00 DAM'S MPPA: 97

100% AR



7 TAC TAKEOVER F816

REG 4231164
 DOB 09/10/18
 TAT F816
 CALVING EASE ★★★

LSF TAKEOVER 9943W
TAC A191
 TBLC MISS 605 CHEYENNE 191

TAC MATERNAL MADE Z30
TAC BAILEY MFH B65
 HATS BAILEY MFH 6R5

HXC CONQUEST 4405P
 LSF WIDELOAD R5014 U8061
 TBLC CHEYENNE 605
 TBLC MISS TANK 678
 BUF CRK THE RIGHT KIND U199
 RIDGE AQUILA 836-456
 RCC EVA'S CANYON M206
 HATS BAILEY 1R2

ACT BW: 67 / 205 WT: 572 / 365 WT: 970 /

HB	GM	CED	BW	WW	YW	MLK	ME	HP	CEM	ST	MB	YG	CW	REA	BF
147	47	14	-3.5	53	82	18	-1	12	6	13	0.50	0.19	13	-0.25	0.04
83%	59%	30%	13%	70%	75%	92%	43%	35%	68%	85%	24%	93%	79%	97%	81%

ADJ IMF: / ADJ REA: /
 WDA: 2.63 DAM'S MPPA:

100% AR

9 TAC TAKEOVER F822

REG 3692519
 DOB 09/03/18
 TAT F822
 CALVING EASE ★★★

LSF TAKEOVER 9943W
TAC A191
 TBLC MISS 605 CHEYENNE 191

HALEYS COWBOY X113
HLTS RED TEDDY
 HALEYS BRILLIANT JEWEL

HXC CONQUEST 4405P
 LSF WIDELOAD R5014 U8061
 TBLC CHEYENNE 605
 TBLC MISS TANK 678
 LONG'S COWBOYS AMIGO
 LONG'S RED HOTTIE
 WHEATLAND RED TEDDY 457P
 SVF/NJC JEWELS DREAM N54

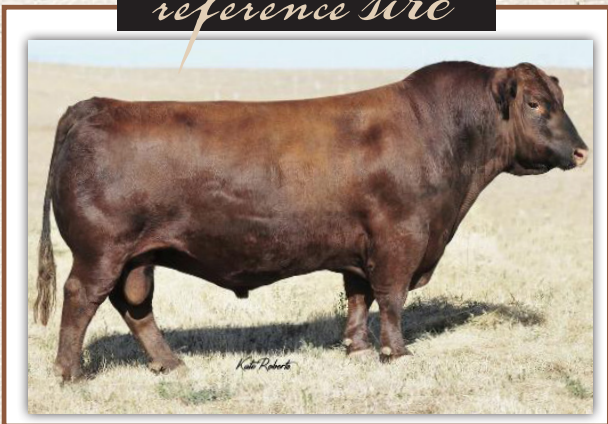
ACT BW: 74 / 205 WT: 437 / 365 WT: 872 /

CE	BW	WW	YW	MCE	MLK	MWW	ST	DOC	CW	YG	MB	BF	RE	API	TI
13.1	-1.6	63.8	95.2	6.9	18.5	50.3	14.3	10.7	18.1	-0.12	0.34	-0.031	0.26	131.1	72.4
35%	15%	55%	60%	45%	80%	75%	65%	60%	90%	85%	40%	65%	99%	35%	40%

ADJ IMF: / 0 ADJ REA: / 0
 WDA: 2.19

1/2 SM 1/2 AR

reference sire



ANDRAS FUSION R236

8 TAC FUSION F829

REG 4231162
 DOB 09/15/18
 TAT F829
 CALVING EASE ★★★

ANDRAS IN FOCUS B175
ANDRAS FUSION R236
 ANDRAS BELLE B167

KLEIN BLAZIN KING 206Z
KLEIN CEDAR A216-641D
 3J MS ONA A216

MYTTY IN FOCUS
 DI ESTONIA 316
 ANDRAS THUNDER B105
 ANDRAS BELLE 416
 5L NORSEMAN KING 2291
 5L TESS 5166-1134
 BUF CRK THE RIGHT KIND U199
 BADLANDS CEDAR 922

ACT BW: 68 / 205 WT: 664 / 365 WT: 1069 /

HB	GM	CED	BW	WW	YW	MLK	ME	HP	CEM	ST	MB	YG	CW	REA	BF
168	48	15	-2.7	50	83	25	-4	11	9	14	0.57	0.10	17	-0.09	0.02
54%	31%	15%	24%	82%	72%	33%	19%	52%	18%	73%	14%	49%	66%	75%	30%

ADJ IMF: / ADJ REA: /
 WDA: 2.72 DAM'S MPPA:

100% AR

10 TAC COLONEL F62

REG 19401849
 DOB 02/14/18
 TAT F62
 CALVING EASE ★★

baldridge Xpand x743
Baldridge Colonel C251
 Baldridge Isabel Y69

CAR Efficient 534
D Eff Opal A355
 D 213 Opal T7189

Hoover Dam
 Baldridge Queen S87
 Styles Upgrade J59
 Baldridge Isabel T935
 K C F Bennett Efficient
 CAR Miss Susie 308
 BR Power Design 213
 D 860 Miss Opal N3296

ACT BW: 80 / 104 205 WT: 552 / 100 365 WT: 1000 / 100

CED	BW	WW	YW	MLK	\$EN	CW	MB	RE	FAT	\$W	\$F	\$G	\$B
2	1.8	53	104	19	-13	39	0.65	0.71	-0.031	41	86	59	146
85%	65%	55%	35%	90%	60%	55%	35%	25%	10%	85%	45%	20%	25%

ADJ IMF: 3.27 / 100 ADJ REA: 11.1 / 100

100% ANGUS





11 TAC FULLY LOADED F53

REG 3541877
DOB 02/12/18
TAT F53
CALVING EASE ★★

W/C LOADED UP 1119Y
W/C FULLY LOADED 90D
MISS WERNING KP 8543U

B C LOOKOUT 7024
WS OS SADIE B4
HSF CHELSEA X045

REMINGTON LOCK N LOAD54U
AUBREYS BLACK BLAZE III
WAGR DREAM CATCHER O3R
MISS WERNING 534R
O C C LEGEND 616L
GIBBET HILL MIGNONNE E37
SVF/NJC MO BETTER M217
HSF VICTORIA P30

ACT BW: 87 / 98 205 WT: 600 / 101 365 WT: 1053 / 99

CE	BW	WW	YW	MCE	MLK	MWW	ST	DOC	CW	YG	MB	BF	RE	API	TI
10.4	1.5	67.7	100.0	2.4	21.3	55.1	17.2	8.7	18.9	-0.46	0.19	-0.080	0.95	123.5	69.0
70%	75%	40%	50%	99%	55%	50%	30%	85%	90%	4%	70%	20%	5%	55%	55%

3/4 SM 1/4 AN ADJ IMF: 2.61 / 102 ADJ REA: 15.53 / 121 WDA: 2.65

12 TAC SANTA FE F563

REG 3541887
DOB 04/27/18
TAT F563
CALVING EASE ★

CCR SANTA FE 9349Z
SFG SANTA FE C558
SFG MAGGIE Y27

MEYER RANCH 734
TAC MS MONEY B344
TAC MISS MONEY W103

S D S GRADUATE 006X
CCR MS APPLE 9332W
HOOKS SHEAR FORCE 38K
SFG MAGGIE U63
MR BLACK GX 6W
MISS GX 728R
TAC MONEY SHOT
TAC MS LEGEND

ACT BW: 88 / 97 205 WT: 519 / 86 365 WT: 1048 / 90

CE	BW	WW	YW	MCE	MLK	MWW	ST	DOC	CW	YG	MB	BF	RE	API	TI
6.0	2.4	61.0	88.4	3.5	19.6	50.0	14.6	9.6	24.7	-0.43	0.02	-0.085	0.89	109.1	62.8
99%	90%	65%	75%	90%	75%	75%	60%	75%	75%	10%	95%	15%	10%	85%	80%

3/4 SM 1/8 AN 1/16 MA 1/16 SS ADJ IMF: 2.67 / 107 ADJ REA: 13.32 / 94 WDA: 2.63

reference sire



W/C FULLY LOADED 90D

13 TAC SANTA FE F474

REG 3541897
DOB 04/01/18
TAT F474
CALVING EASE ★★

CCR SANTA FE 9349Z
SFG SANTA FE C558
SFG MAGGIE Y27

TCB FOCUS BLACKCAP

S D S GRADUATE 006X
CCR MS APPLE 9332W
HOOKS SHEAR FORCE 38K
SFG MAGGIE U63

ACT BW: 75 / 114 205 WT: 497 / 365 WT: 1000 /

CE	BW	WW	YW	MCE	MLK	MWW	ST	DOC	CW	YG	MB	BF	RE	API	TI
12.8	-0.8	59.7	87.5	7.8	21.8	51.6	10.1	9.1	29.8	-0.12	0.39	-0.017	0.50	122.2	70.5
40%	25%	70%	75%	30%	50%	70%	95%	80%	50%	85%	35%	90%	75%	55%	45%

1/2 SM 1/2 AN ADJ IMF: 4.06 / 100 ADJ REA: 11.30 / 100 WDA: 2.53



YEARLING RED ANGUS BULLS



reference sire



100% AR

BIEBER ROLLIN DEEP Y118

REG 1436844

BIEBER ROUGH RIDER 10712
BIEBER ROOSEVELT W384
 BIEBER SHEBA 9602

BIEBER BOONE 8000
BIEBER TILLY 399W
 BIEBER TILLY 303S

BASIN TREND SETTER 6074
 BIEBER ADELLE 8958
 C A FUTURE DIRECTION 5321
 BIEBER SHEBA 5537
 BIEBER BOONE 6927
 BIEBER QUE 6007
 RITO 112 OF 2536 RITO 616
 BIEBER TILLY 7334

HB	GM	CED	BW	WW	YW	MLK	ME	HP	CEM	ST	MB	YG	CW	REA	BF
186	49	10	0.0	73	118	22	6	7	7	19	0.47	0.18	27	0.28	0.08
25%	30%	78%	75%	8%	7%	64%	89%	93%	49%	14%	32%	83%	29%	13%	99%

FOUR FULL BROTHERS Sell as lots 14-17

What a way to start off this year's set of yearlings. All I can think of is how rare these brothers are! Looking back at their pedigree, you find the maternal great, 84S, and Blockade, who excels in early growth, carcass, udder structure and natural thickness. Then throwing Rolling Deep into the picture with his ability to sire calves with extra style, milk, and performance. Very rare opportunity to acquire three pedigrees that are really hard to get ahold of.



LOT 14

Herd bull alert!
 They check all the boxes,
 combining maternal, growth,
 carcass, and style.

14

TAC ROLLIN COAL G150



REG 4229978

DOB 02/28/19

TAT G150

CALVING EASE ★★

BIEBER ROOSEVELT W384
BIEBER ROLLIN DEEP Y118
 BIEBER TILLY 399W

5L BLOCKADE 2218-30B
TAC MS MARIGOLD D41
 SDCC MARIGOLD 501W

BIEBER ROUGH RIDER 10712
 BIEBER SHEBA 9602
 BIEBER BOONE 8000
 BIEBER TILLY 303S
 5L DEFENDER 560-30Z
 5L OPAL 656-2218
 RED HILL B571 JULIAN 84S
 BUF CRK MARIGOLD T132


ACT BW: 86 / 205 WT: 619 / 365 WT: 1111 /

HB	GM	CED	BW	WW	YW	MLK	ME	HP	CEM	ST	MB	YG	CW	REA	BF
176	48	13	-1.6	66	105	21	1	8	6	17	0.40	0.08	19	0.31	0.05
40%	38%	48%	46%	17%	18%	72%	59%	90%	78%	31%	46%	33%	54%	6%	96%

100% AR

ADJ IMF: 1.52 / 57 ADJ REA: 14.28 / 113
 WDA: 3.08 DAM'S MPPA: 95



15 TAC ROLLIN DEEP G157 

REG 4229980
DOB 02/28/19
TAT G157
CALVING EASE ★★

BIEBER ROOSEVELT W384
BIEBER ROLLIN DEEP Y118
BIEBER TILLY 399W

5L BLOCKADE 2218-30B
TAC MS MARIGOLD D41
SDCC MARIGOLD 501W


BIEBER ROUGH RIDER 10712
BIEBER SHEBA 9602
BIEBER BOONE 8000
BIEBER TILLY 303S
5L DEFENDER 560-30Z
5L OPAL 656-2218
RED HILL B571 JULIAN 84S
BUF CRK MARIGOLD T132

ACT BW: 86 / 205 WT: 557 / 365 WT: 1053 /

HB	GM	CED	BW	WW	YW	MLK	ME	HP	CEM	ST	MB	YG	CW	REA	BF
176	48	13	-1.6	66	105	21	1	8	6	17	0.40	0.08	19	0.31	0.05
40%	38%	48%	46%	17%	18%	72%	59%	90%	78%	31%	46%	33%	54%	6%	96%

ADJ IMF: 2.38 / 89 ADJ REA: 12.88 / 102
WDA: 2.94 DAM'S MPPA: 95

100% AR

16 TAC ROLLIN DEEP G131 

REG 4229974
DOB 02/26/19
TAT G131
CALVING EASE ★★

BIEBER ROOSEVELT W384
BIEBER ROLLIN DEEP Y118
BIEBER TILLY 399W

5L BLOCKADE 2218-30B
TAC MS MARIGOLD D41
SDCC MARIGOLD 501W


BIEBER ROUGH RIDER 10712
BIEBER SHEBA 9602
BIEBER BOONE 8000
BIEBER TILLY 303S
5L DEFENDER 560-30Z
5L OPAL 656-2218
RED HILL B571 JULIAN 84S
BUF CRK MARIGOLD T132

ACT BW: 84 / 205 WT: 530 / 365 WT: 937 /

HB	GM	CED	BW	WW	YW	MLK	ME	HP	CEM	ST	MB	YG	CW	REA	BF
176	48	13	-1.6	66	105	21	1	8	6	17	0.40	0.08	19	0.31	0.05
40%	38%	48%	46%	17%	18%	72%	59%	90%	78%	31%	46%	33%	54%	6%	96%

ADJ IMF: 3.79 / 141 ADJ REA: 12.75 / 100
WDA: 2.60 DAM'S MPPA: 95

100% AR

17 TAC ROLLIN DEEP G72 

REG 4229892
DOB 02/22/19
TAT G72
CALVING EASE ★★

BIEBER ROOSEVELT W384
BIEBER ROLLIN DEEP Y118
BIEBER TILLY 399W

5L BLOCKADE 2218-30B
TAC MS MARIGOLD D41
SDCC MARIGOLD 501W

BIEBER ROUGH RIDER 10712
BIEBER SHEBA 9602
BIEBER BOONE 8000
BIEBER TILLY 303S
5L DEFENDER 560-30Z
5L OPAL 656-2218
RED HILL B571 JULIAN 84S
BUF CRK MARIGOLD T132

ACT BW: 95 / 205 WT: 580 / 365 WT: 1076 /

HB	GM	CED	BW	WW	YW	MLK	ME	HP	CEM	ST	MB	YG	CW	REA	BF
176	48	13	-1.6	66	105	21	1	8	6	17	0.40	0.08	19	0.31	0.05
40%	38%	48%	46%	17%	18%	72%	59%	90%	78%	31%	46%	33%	54%	6%	96%

ADJ IMF: 1.83 / ADJ REA: 12.09 /
WDA: 2.99 DAM'S MPPA: 95

100% AR

A
TA CATTLE

reference sire



100%AR

5L PERFECT STORM 1201-172D REG 3570473

5L DEFENDER 560-30Z
5L THE REAL DEAL 1687-143B
 5L FIREFLY 275-1687

BUF CRK THE RIGHT KIND U199
5L RUBY 829-1201
 5L RUBY 162-829

5L ADVOCATE 817-14W
 5L BLACK ADINA 525-560
 5L DESTINATION 893-6215
 5L FIREFLY 2573-275
 BUF CRK LANCER R017
 BUF CRK SHOSHONE R353
 5L NORSEMAN KING 2291
 5L RUBY 630-162

HB	GM	CED	BW	WW	YW	MLK	ME	HP	CEM	ST	MB	YG	CW	REA	BF
173	50	16	-2.5	54	94	25	-5	11	9	14	0.69	-0.01	24	0.27	0.00
44%	19%	14%	28%	70%	49%	38%	23%	48%	21%	69%	8%	8%	39%	14%	12%

THREE FULL BROTHERS Sell as lots 18-20

Calved out our first set of Perfect Storm daughters and couldn't ask any more of them. Perfect udder structure, teat size, and mothering ability. He will definitely be one of the go-to maternal sires in our herd for years to come. Their mother, 501W, is the granddam of lots 14-17 and the mother to several others throughout the years. She works with every bull we throw at her. If you are wanting heifer bulls that make great females and steers that excel in carcass, look no further.



LOT 18



SDCC MARIGOLD 501W

18 TAC PERFECT STORM G77

REG
4230116
DOB
02/22/19
TAT
G77
CALVING EASE
★★★★

5L THE REAL DEAL 1687-143B
5L PERFECT STORM 1201-172D
 5L RUBY 829-1201

RED HILL B571 JULIAN 84S
SDCC MARIGOLD 501W
 BUF CRK MARIGOLD T132

5L DEFENDER 560-30Z
 5L FIREFLY 275-1687
 BUF CRK THE RIGHT KIND U199
 5L RUBY 162-829
 BECKTON JULIAN GG B571
 BECKTON BARMAID M554 CH
 BFCK CHEROKEE CNYN 4912
 BUF CRK MARIGOLD 6068

ACT BW: 78 / 205 WT: 685 / 365 WT: 1020 /

HB	GM	CED	BW	WW	YW	MLK	ME	HP	CEM	ST	MB	YG	CW	REA	BF
186	48	16	-2.8	54	87	24	-6	8	8	17	0.42	-0.01	13	0.22	0.01
23%	38%	9%	21%	67%	64%	45%	13%	92%	35%	31%	41%	7%	79%	13%	28%

100% AR

ADJ IMF: 2.29 / 85 ADJ REA: 12.99 / 102
 WDA: 2.76 DAM'S MPPA: 98

19 TAC PERFECT STORM G107

REG
4229966
DOB
02/23/19
TAT
G107
CALVING EASE
★★★★

5L THE REAL DEAL 1687-143B
5L PERFECT STORM 1201-172D
 5L RUBY 829-1201

RED HILL B571 JULIAN 84S
SDCC MARIGOLD 501W
 BUF CRK MARIGOLD T132

5L DEFENDER 560-30Z
 5L FIREFLY 275-1687
 BUF CRK THE RIGHT KIND U199
 5L RUBY 162-829
 BECKTON JULIAN GG B571
 BECKTON BARMAID M554 CH
 BFCK CHEROKEE CNYN 4912
 BUF CRK MARIGOLD 6068

ACT BW: 75 / 205 WT: 474 / 365 WT: 912 /

HB	GM	CED	BW	WW	YW	MLK	ME	HP	CEM	ST	MB	YG	CW	REA	BF
186	48	16	-2.8	54	87	24	-6	8	8	17	0.42	-0.01	13	0.22	0.01
23%	38%	9%	21%	67%	64%	45%	13%	92%	35%	31%	41%	7%	79%	13%	28%

100% AR

ADJ IMF: 3.14 / 117 ADJ REA: 12.30 / 97
 WDA: 2.55 DAM'S MPPA: 98



LOT 20



LOT 21

20 TAC PERFECT STORM G36

REG 4230028
DOB 02/15/19
TAT G36
CALVING EASE ★★ ★★

5L THE REAL DEAL 1687-143B
5L PERFECT STORM 1201-172D
5L RUBY 829-1201

5L DEFENDER 560-30Z
5L FIREFLY 275-1687
BUF CRK THE RIGHT KIND U199
5L RUBY 162-829
BECKTON JULIAN GG B571
BECKTON BARMAID M554 CH
BFCK CHEROKEE CNYN 4912
BUF CRK MARIGOLD 6068

RED HILL B571 JULIAN 845
SDCC MARIGOLD 501W
BUF CRK MARIGOLD T132

ACT BW: 62 / 205 WT: 438 / 365 WT: 885 /

HB	GM	CED	BW	WW	YW	MLK	ME	HP	CEM	ST	MB	YG	CW	REA	BF
186	48	16	-2.8	54	87	24	-6	8	8	17	0.42	-0.01	13	0.22	0.01
23%	38%	9%	21%	67%	64%	45%	13%	92%	35%	31%	41%	7%	79%	13%	28%

ADJ IMF: 2.24 / 83 ADJ REA: 11.47 / 90
WDA: 2.47 DAM'S MPPA: 98

100% AR

21 TAC MATERNAL PLUS G112

REG 4231158
DOB 02/23/19
TAT G112
CALVING EASE ★★ ★★

BASIN PAYWEIGHT 1682
BASIN PAYWEIGHT PLUS 6048
EXAR ROYAL LASS 2810

BASIN PAYWEIGHT 0065
21AR O LASS 7017
CONNELLY CONSENSUS 7229
EXAR ROYAL LASS 1067
RIDGE ENHANCED 9002
RIDGE SHEILA 009-217
5L SIGNATURE 2846-266V
RRA SANDY 519 891

RIDGE ENHANCED 1124
KLEIN SANDY 331A
RRA SANDY 891 050

ACT BW: 82 / 205 WT: 616 / 365 WT: 1067 /

HB	GM	CED	BW	WW	YW	MLK	ME	HP	CEM	ST	MB	YG	CW	REA	BF
28	48	12	-0.9	57	82	21	0	5	3	0	0.40	0.00	7	-0.02	0.01
99%	42%	59%	60%	56%	74%	75%	50%	98%	98%	99%	46%	9%	92%	58%	18%

ADJ IMF: 2.83 / 97 ADJ REA: 13.20 / 97
WDA: 2.95 DAM'S MPPA: 98

100% AR

reference sire



BASIN PAYWEIGHT PLUS 6048



LOT 22

TWO FULL BROTHERS
Sell as lots 21-22

Outcross pedigree that we feel is spot on with where we wanted to go. Calving ease, carcass, added milk, and backed by a great Consensus daughter. We are really excited about these Payweight Plus cattle, they are very consistent and are high capacity cattle with more thickness than his sire. Payweight Plus died at a young age and is hard to get semen on.

22 TAC PAYWEIGHT PLUS G125

REG 4231160
DOB 02/24/19
TAT G125
CALVING EASE ★★ ★★

BASIN PAYWEIGHT 1682
BASIN PAYWEIGHT PLUS 6048
EXAR ROYAL LASS 2810

BASIN PAYWEIGHT 0065
21AR O LASS 7017
CONNELLY CONSENSUS 7229
EXAR ROYAL LASS 1067
RIDGE ENHANCED 9002
RIDGE SHEILA 009-217
5L SIGNATURE 2846-266V
RRA SANDY 519 891

RIDGE ENHANCED 1124
KLEIN SANDY 331A
RRA SANDY 891 050

ACT BW: 78 / 205 WT: 597 / 365 WT: 1102 /

HB	GM	CED	BW	WW	YW	MLK	ME	HP	CEM	ST	MB	YG	CW	REA	BF
28	48	12	-0.9	57	82	21	0	5	3	0	0.40	0.00	7	-0.02	0.01
99%	42%	59%	60%	56%	74%	75%	50%	98%	98%	99%	46%	9%	92%	58%	18%

ADJ IMF: 3.00 / 103 ADJ REA: 14.12 / 103
WDA: 3.06 DAM'S MPPA: 98

100% AR

reference sire



100% AR

5L BOURNE 117-48A

REG
1627789

BUF CRK THE RIGHT KIND U199
5L ADVANTAGE 3267-221Y
5L ADINA 195-3267

5L SIGNATURE 5615
5L ROXIE 854-117
XXX ROXIE 854 MR

BUF CRK LANCER R017
BUF CRK SHOSHONE R353
5L TRADITION 203-6145
5L ADINA 2113-195
5L NORSEMAN KING 2291
5L RUBY 199-01
XXX SUN FIRE 3136 HC
XXX ROXIE 040 MR

HB	GM	CED	BW	WW	YW	MLK	ME	HP	CEM	ST	MB	YG	CW	REA	BF
213	50	14	-3.6	73	110	21	-7	20	7	18	0.74	0.15	13	0.02	0.05
5%	11%	33%	13%	8%	15%	71%	17%	1%	43%	28%	5%	73%	74%	49%	93%

BOURNE SIRE GROUP Sell as lots 23-25

Bourne is a sire that has been used extensively across the US, bringing low birthweights without compromising growth and daughters that have low maintenance energy and high stayability.



LOT 23



LOT 25

23 TAC BOURNE G137

REG
4230326
DOB
02/25/19
TAT
G137
CALVING EASE
★★★★

5L ADVANTAGE 3267-221Y
5L BOURNE 117-48A
5L ROXIE 854-117

3SCC HOBO X05
TAC PHOEBE A97
3SCC PHOEBE W133

BUF CRK THE RIGHT KIND U199
5L ADINA 195-3267
5L SIGNATURE 5615
XXX ROXIE 854 MR
BASIN HOBO 0545
3SCC CLASSY U211
HAMMEL ROMEO 212T-ET
3SCC PHOEBE S327

ACT BW: 69 / 84 205 WT: 563 / 109 365 WT: 1093 / 109

HB	GM	CED	BW	WW	YW	MLK	ME	HP	CEM	ST	MB	YG	CW	REA	BF
205	48	15	-3.5	60	95	27	-1	14	9	19	0.55	0.19	16	-0.13	0.05
6%	38%	15%	12%	40%	43%	18%	40%	13%	20%	16%	18%	93%	68%	84%	93%

100% AR

ADJ IMF: 2.47 / 105 ADJ REA: 13.14 / 102
WDA: 3.03 DAM'S MPPA: 103

24 TAC BOURNE G12

REG
4229970
DOB
02/15/19
TAT
G12
CALVING EASE
★★★★

5L ADVANTAGE 3267-221Y
5L BOURNE 117-48A
5L ROXIE 854-117

TAC SHOOTER A435
TAC SIERRA E123
3SCC SIERRA A65

BUF CRK THE RIGHT KIND U199
5L ADINA 195-3267
5L SIGNATURE 5615
XXX ROXIE 854 MR
BIEBER H HUGHES W109
OLC ANGELA R435
3SCC LANCER W207
3SCC SIERRA W195

ACT BW: 55 / 76 205 WT: 602 / 108 365 WT: 1129 / 107

HB	GM	CED	BW	WW	YW	MLK	ME	HP	CEM	ST	MB	YG	CW	REA	BF
197	48	14	-3.1	65	96	24	-2	15	9	17	0.50	0.11	15	0.05	0.04
11%	45%	23%	16%	20%	39%	48%	34%	4%	16%	30%	25%	51%	72%	43%	80%

100% AR

ADJ IMF: 3.75 / 119 ADJ REA: 11.37 / 91
WDA: 2.80 DAM'S MPPA: 103

25 TAC BOURNE G91

REG
4230118
DOB
02/21/19
TAT
G91
CALVING EASE
★★

5L ADVANTAGE 3267-221Y
5L BOURNE 117-48A
5L ROXIE 854-117

GP WALLACE 016
TAC BRANDY B45
3SCC BRANDY Y45

BUF CRK THE RIGHT KIND U199
5L ADINA 195-3267
5L SIGNATURE 5615
XXX ROXIE 854 MR
LJC MISSION STATEMENT P27
GP FAITH 803
BADLANDS NET WORTH 23U
3SCC BRANDY S168

ACT BW: 80 / 99 205 WT: 566 / 109 365 WT: 1041 / 103

HB	GM	CED	BW	WW	YW	MLK	ME	HP	CEM	ST	MB	YG	CW	REA	BF
204	49	11	-1.2	69	103	19	-2	15	6	19	0.57	0.09	19	0.11	0.03
6%	23%	73%	53%	9%	23%	88%	32%	4%	77%	10%	14%	41%	56%	29%	73%

100% AR

ADJ IMF: 2.50 / 63 ADJ REA: 13.47 / 101
WDA: 2.85 DAM'S MPPA: 101



Perfect Storm Daughter

PERFECT STORM SIRE GROUP

Sell as lots 26-36

Back to a big group of Perfect Storm sons that would be a true asset to any program. Very consistent set of calving ease bulls that are maternal and carcass oriented. Half brothers sell as lots 18-20. They aren't your average heifer bulls; when they are done with your heifers, don't be afraid to let them go to work on your cows! They have the performance to do so.



28 TAC PERFECT STORM G194

REG 4229890
DOB 02/28/19
TAT G194
CALVING EASE ★★★

5L THE REAL DEAL 1687-143B
5L PERFECT STORM 1201-172D
5L RUBY 829-1201

3SCC EXPLORER B67
TAC MS EBV D251
TAC A52

5L DEFENDER 560-30Z
5L FIREFLY 275-1687
BUF CRK THE RIGHT KIND U199
5L RUBY 162-829
VGW NAVIGATOR 010
3SCC INGRID X201
BIEBER HARD DRIVE Y120
BIEBER TILLY 352Y

ACT BW: 68 / 93 205 WT: 453 / 94 365 WT: 946 / 92

HB	GM	CED	BW	WW	YW	MLK	ME	HP	CEM	ST	MB	YG	CW	REA	BF
181	51	12	-1.1	62	105	24	-1	12	6	16	0.67	0.07	27	0.15	0.02
31%	6%	54%	56%	33%	18%	46%	44%	39%	68%	45%	5%	28%	23%	23%	29%

ADJ IMF: 3.04 / 84 ADJ REA: 11.58 / 92
WDA: 2.36 DAM'S MPPA: 97

100% AR

26 TAC PERFECT STORM G114

REG 4229882
DOB 02/24/19
TAT G114
CALVING EASE ★★★

5L THE REAL DEAL 1687-143B
5L PERFECT STORM 1201-172D
5L RUBY 829-1201

VGW OLY 903
BIEBER MISS 150Z
BASIN MISS 8226

5L DEFENDER 560-30Z
5L FIREFLY 275-1687
BUF CRK THE RIGHT KIND U199
5L RUBY 162-829
RED SSS OLY 554T
VGW TM-DORA 0758
BASIN SALUTE R060
BASIN MISS 2910

ACT BW: 71 / 92 205 WT: 532 / 104 365 WT: 983 / 106

HB	GM	CED	BW	WW	YW	MLK	ME	HP	CEM	ST	MB	YG	CW	REA	BF
163	48	15	-2.8	50	89	23	-1	10	9	14	0.54	0.04	23	0.12	0.01
63%	32%	19%	21%	83%	59%	54%	45%	64%	13%	75%	19%	19%	38%	26%	18%

ADJ IMF: 1.98 / 63 ADJ REA: 13.42 / 107
WDA: 2.72 DAM'S MPPA: 99

100% AR



27 TAC PERFECT STORM G280

REG 4230002
DOB 03/10/19
TAT G280
CALVING EASE ★★★

5L THE REAL DEAL 1687-143B
5L PERFECT STORM 1201-172D
5L RUBY 829-1201

5L BLOCKADE 2218-30B
TAC MS BLOCKADE D174
TAC A132

5L DEFENDER 560-30Z
5L FIREFLY 275-1687
BUF CRK THE RIGHT KIND U199
5L RUBY 162-829
5L DEFENDER 560-30Z
5L OPAL 656-2218
LSF TAKEOVER 9943W
TBLC MISS 605 CHEYENNE 132

ACT BW: 79 / 102 205 WT: 494 / 106 365 WT: 956 / 98

HB	GM	CED	BW	WW	YW	MLK	ME	HP	CEM	ST	MB	YG	CW	REA	BF
169	50	15	-2.2	61	103	21	-2	11	6	15	0.70	0.06	25	0.20	0.02
53%	11%	19%	33%	37%	23%	75%	35%	46%	66%	72%	4%	26%	29%	16%	45%

ADJ IMF: 2.66 / 97 ADJ REA: 11.84 / 102
WDA: 2.44 DAM'S MPPA: 97

100% AR

29 TAC PERFECT STORM G121

REG 4229972
DOB 02/24/19
TAT G121
CALVING EASE ★★★

5L THE REAL DEAL 1687-143B
5L PERFECT STORM 1201-172D
5L RUBY 829-1201

BIEBER HARD DRIVE Y120
TAC FOXY A26
BASIN INDIGO W026

5L DEFENDER 560-30Z
5L FIREFLY 275-1687
BUF CRK THE RIGHT KIND U199
5L RUBY 162-829
LACY GOLD BAR 8123
BIEBER LAURA 158W
BASIN TREND SETTER 6358
BASIN INDIGO 3923

ACT BW: 71 / 87 205 WT: 430 / 92 365 WT: 897 / 92

HB	GM	CED	BW	WW	YW	MLK	ME	HP	CEM	ST	MB	YG	CW	REA	BF
179	49	16	-3.0	50	80	23	-5	11	9	15	0.63	-0.04	15	0.21	0.00
34%	26%	9%	18%	82%	79%	53%	18%	46%	13%	60%	8%	5%	73%	14%	10%

ADJ IMF: 2.43 / 88 ADJ REA: 12.22 / 105
WDA: 2.35 DAM'S MPPA: 95

100% AR



LOT 30



LOT 32

30 TAC PERFECT STORM G383

REG 4230034
DOB 03/22/19
TAT G383
CALVING EASE ★★

5L THE REAL DEAL 1687-143B
5L PERFECT STORM 1201-172D
5L RUBY 829-1201

BROWN JYJ REDEMPTION Y1334
TAC MS BRANDY D90
3SCC BRANDY Y112

5L DEFENDER 560-30Z
5L FIREFLY 275-1687
BUF CRK THE RIGHT KIND U199
5L RUBY 162-829
BECKTON NEBULA P P707
JYJ MS JOLENE W16
3SCC ZEPPLIN S99
3SCC BRANDY R44

ACT BW: 78 / 99 205 WT: 472 / 101 365 WT: 934 / 96

HB	GM	CED	BW	WW	YW	MLK	ME	HP	CEM	ST	MB	YG	CW	REA	BF
177	49	14	-2.0	58	100	24	0	11	8	16	0.54	0.07	26	0.17	0.02
38%	26%	32%	36%	50%	28%	42%	50%	57%	26%	49%	18%	31%	27%	20%	45%

ADJ IMF: 2.25 / 82 ADJ REA: 12.34 / 106
WDA: 2.41 DAM'S MPPA: 102

100% AR

32 TAC PERFECT STORM G17

REG 4229982
DOB 02/15/19
TAT G17
CALVING EASE ★★

5L THE REAL DEAL 1687-143B
5L PERFECT STORM 1201-172D
5L RUBY 829-1201

5L BLOCKADE 2218-30B
TAC TAWNY E42
TAC TAWNY A15-X604

5L DEFENDER 560-30Z
5L FIREFLY 275-1687
BUF CRK THE RIGHT KIND U199
5L RUBY 162-829
5L DEFENDER 560-30Z
5L OPAL 656-2218
RED TER-RON RELOAD 703T
3SCC TAWNY X604

ACT BW: 70 / 94 205 WT: 579 / 104 365 WT: 1017 / 97

HB	GM	CED	BW	WW	YW	MLK	ME	HP	CEM	ST	MB	YG	CW	REA	BF
158	49	14	-1.7	55	92	21	-5	11	6	14	0.61	0.00	20	0.23	0.01
71%	28%	28%	44%	65%	49%	78%	18%	49%	64%	78%	11%	8%	53%	12%	18%

ADJ IMF: 3.02 / 96 ADJ REA: 11.47 / 92
WDA: 2.52 DAM'S MPPA: 102

100% AR



LOT 34



LOT 33

31 TAC PERFECT STORM G307

REG 4230014
DOB 03/15/19
TAT G307
CALVING EASE ★★

5L THE REAL DEAL 1687-143B
5L PERFECT STORM 1201-172D
5L RUBY 829-1201

LARSON CATALYST 153
3SCC GINGER A339
2RJL MISS HI DYNAMICS R580

5L DEFENDER 560-30Z
5L FIREFLY 275-1687
BUF CRK THE RIGHT KIND U199
5L RUBY 162-829
VGW BASES LOADED 905
LARSON MARIE 768-185
BR HI HO 239
SCC MISS DYNAMIC SAGEGIRL236

ACT BW: 90 / 110 205 WT: 510 / 365 WT: 953 /

HB	GM	CED	BW	WW	YW	MLK	ME	HP	CEM	ST	MB	YG	CW	REA	BF
158	49	12	-1.6	51	88	23	-3	10	4	15	0.44	-0.05	14	0.19	0.00
70%	25%	60%	44%	79%	60%	58%	29%	64%	95%	63%	35%	4%	75%	17%	7%

ADJ IMF: 3.36 / ADJ REA: 14.03 /
WDA: 2.70 DAM'S MPPA: 98

100% AR

33 TAC PERFECT STORM G257

REG 4229876
DOB 02/22/19
TAT G257
CALVING EASE ★★

5L THE REAL DEAL 1687-143B
5L PERFECT STORM 1201-172D
5L RUBY 829-1201

TAC PROSPECT C2
TAC DANA E71
3SCC DANA A479

5L DEFENDER 560-30Z
5L FIREFLY 275-1687
BUF CRK THE RIGHT KIND U199
5L RUBY 162-829
LSF PROSPECT 2035Z
VF PRINCESS ANN A236-054
BHR GOLDEN BOY 854
BSKF DANA X761

ACT BW: 70 / 99 205 WT: 517 / 365 WT: 1024 /

HB	GM	CED	BW	WW	YW	MLK	ME	HP	CEM	ST	MB	YG	CW	REA	BF
169	49	14	-1.6	59	101	27	2	11	9	15	0.54	0.02	27	0.31	0.02
53%	17%	30%	44%	44%	27%	16%	66%	52%	13%	70%	18%	13%	23%	6%	37%

ADJ IMF: 3.30 / ADJ REA: 12.09 /
WDA: 2.64 DAM'S MPPA: 95

100% AR

34 TAC PERFECT STORM G417

REG 4230044
DOB 03/25/19
TAT G417
CALVING EASE ★★

5L THE REAL DEAL 1687-143B
5L PERFECT STORM 1201-172D
5L RUBY 829-1201

HXC CONQUEST 4405P
EIR A203
EIR Y218

5L DEFENDER 560-30Z
5L FIREFLY 275-1687
BUF CRK THE RIGHT KIND U199
5L RUBY 162-829
BECKTON JULIAN GG B571
HXC ELLIE MAY MA638
RED SIX MILE SAKIC 832S
EIR M212

ACT BW: 90 / 110 205 WT: 485 / 104 365 WT: 1115 / 114

HB	GM	CED	BW	WW	YW	MLK	ME	HP	CEM	ST	MB	YG	CW	REA	BF
181	48	17	-3.5	57	93	27	2	11	10	16	0.50	0.03	18	0.04	0.00
32%	37%	5%	13%	54%	47%	14%	69%	57%	3%	58%	26%	16%	60%	43%	11%

ADJ IMF: 2.41 / 88 ADJ REA: 11.89 / 103
WDA: 2.99 DAM'S MPPA: 109

100% AR



SECURITY SON

Sells as lot 37

Security cattle are sorting their way to the top while talking about making momma cows. Moderate, easy keeping females with picture perfect udders and great mothering ability. B10 has put one in the top of the sale every year, but she does have a fault - with all the herd bulls she produces, we don't have enough females out of her! Tried, true, and tested maternal pedigree.

reference sire



TAC SECURITY D56

35 TAC PERFECT STORM G228

REG 4229984
DOB 02/15/19
TAT G228
CALVING EASE ★★

5L THE REAL DEAL 1687-143B
5L PERFECT STORM 1201-172D
5L RUBY 829-1201

TAC PROSPECT C2
TAC MARIGOLD E94
SDCC MARIGOLD 501W

5L DEFENDER 560-30Z
5L FIREFLY 275-1687
BUF CRK THE RIGHT KIND U199
5L RUBY 162-829
LSF PROSPECT 2035Z
VF PRINCESS ANN A236-054
RED HILL B571 JULIAN 84S
BUF CRK MARIGOLD T132

ACT BW: 80 / 107 205 WT: 546 / 98 365 WT: 1056 / 100

HB	GM	CED	BW	WW	YW	MLK	ME	HP	CEM	ST	MB	YG	CW	REA	BF
176	49	14	-2.2	60	100	25	-3	11	8	15	0.47	0.01	23	0.30	0.02
40%	22%	24%	33%	40%	30%	37%	28%	44%	24%	61%	30%	11%	39%	7%	42%

ADJ IMF: 3.23 / 103 ADJ REA: 12.77 / 102
WDA: 2.57 DAM'S MPPA: 99

100% AR



36 TAC PERFECT STORM G138

REG 4229976
DOB 02/15/19
TAT G138
CALVING EASE ★★

5L THE REAL DEAL 1687-143B
5L PERFECT STORM 1201-172D
5L RUBY 829-1201

BROWN RED OAK A7639
TAC TAWNY E226
3SCC TAWNY X604

5L DEFENDER 560-30Z
5L FIREFLY 275-1687
BUF CRK THE RIGHT KIND U199
5L RUBY 162-829
HUST CHIEF SEQUOYA R336
BROWN MS P707 Y7686
BASIN TREND SETTER 455S
RRM TAWNY M253

ACT BW: 71 / 97 205 WT: 494 / 106 365 WT: 1048 / 108

HB	GM	CED	BW	WW	YW	MLK	ME	HP	CEM	ST	MB	YG	CW	REA	BF
184	49	15	-1.9	56	90	25	-5	11	8	16	0.71	0.05	15	0.03	0.01
26%	20%	19%	37%	61%	56%	37%	17%	51%	27%	45%	4%	21%	72%	45%	26%

ADJ IMF: 3.63 / 132 ADJ REA: 11.97 / 103
WDA: 2.49 DAM'S MPPA: 102

100% AR

37 TAC SECURITY G141

REG 4229896
DOB 02/25/19
TAT G141
CALVING EASE ★★

5L BLOCKADE 2218-30B
TAC SECURITY D56
LAZYJ MS BRIER 494-976

5L SOLITAIRE 3769-33Y
TAC SYSCO B10
3SCC SYSCO X55

5L DEFENDER 560-30Z
5L OPAL 656-2218
LSF RAB PERFORMANCE 2772Z
LAZYJ MISS WANETTE 976-122
RED SSS OLY 554T
5L ROXIE 2415-3769
BIEBER RED MOON 6042
3SCC SYSCO U333

ACT BW: 69 / 90 205 WT: 460 / 95 365 WT: 939 / 91

HB	GM	CED	BW	WW	YW	MLK	ME	HP	CEM	ST	MB	YG	CW	REA	BF
188	47	16	-3.8	53	87	18	-1	10	7	18	0.44	0.12	16	0.03	0.04
21%	65%	13%	9%	73%	64%	91%	46%	70%	49%	20%	35%	63%	70%	48%	85%

ADJ IMF: 2.97 / 82 ADJ REA: 12.44 / 99
WDA: 2.45 DAM'S MPPA: 99

100% AR

reference sire



GP WALLACE 016

REG
1361942

LJC LANCER 806
LJC MISSION STATEMENT P27
LJC HANNAH 106

LCC FIELD DAY A614N
GP FAITH 803
LSF FAITH LA416

BECKTON LANCER T A664
LJC HB LIZZIE 606
HOLDEN HI HO 753
LJC KJ JAMIE 516
BFCK CHEROKEE CNYN 4912
LCC PRINCESS LA099
GLACIER MARIAS 548
LSF ON TARGET H1386

HB	GM	CED	BW	WW	YW	MLK	ME	HP	CEM	ST	MB	YG	CW	REA	BF
199	50	11	-0.2	77	120	18	5	9	5	20	0.24	-0.02	37	0.44	0.00
12%	17%	69%	71%	4%	6%	84%	85%	76%	84%	8%	81%	7%	10%	6%	11%

WALLACE SONS Sell as lots 38-39

From a consistency standpoint for making carcass bulls, Wallace always comes to mind. He just constantly sires calves that excel in carcass. Lot 36 and 37 are direct Wallace sons. If you sell on the grid and shoot for prime carcasses, these are bulls that need to be on your shortlist.



38 TAC WALLACE G135

REG
4229878
DOB
02/25/19
TAT
G135
CALVING EASE
★★

LJC MISSION STATEMENT P27
GP WALLACE 016
GP FAITH 803

3SCC LANCER W207
3SCC SIERRA A65
3SCC SIERRA W195

LJC LANCER 806
LJC HANNAH 106
LCC FIELD DAY A614N
LSF FAITH LA416
HAMMEL LANCER 41P
UBAR COPPERQUEEN 506
3SCC ZEUST70
3SCC SIERRA T82

ACT BW: 81 / 105 205 WT: 459 / 95 365 WT: 1150 / 111

HB	GM	CED	BW	WW	YW	MLK	ME	HP	CEM	ST	MB	YG	CW	REA	BF
192	47	12	-1.1	63	97	25	3	10	7	19	0.23	0.04	27	0.27	0.02
16%	56%	50%	56%	27%	36%	38%	77%	66%	57%	11%	88%	17%	24%	8%	42%

100% AR

ADJ IMF: 2.20 / 61 ADJ REA: 15.04 / 119
WDA: 2.95 DAM'S MPPA: 103

39 TAC WALLACE G118

REG
4229968
DOB
02/24/19
TAT
G118
CALVING EASE
★★

LJC MISSION STATEMENT P27
GP WALLACE 016
GP FAITH 803

TBLC CHEYENNE 605
TBLC MISS 605 CHEYENNE 191
TBLC MISS TANK 678

LJC LANCER 806
LJC HANNAH 106
LCC FIELD DAY A614N
LSF FAITH LA416
LCC CHEYENNE B221L
TBLC FAYET410
CRSA 6X
TBLC MS COLT 204G 23P

ACT BW: 80 / 205 WT: 475 / 365 WT: 917 /

HB	GM	CED	BW	WW	YW	MLK	ME	HP	CEM	ST	MB	YG	CW	REA	BF
205	49	11	-0.3	73	112	22	4	10	5	21	0.36	0.11	32	0.10	0.02
6%	29%	75%	73%	4%	8%	64%	83%	65%	82%	3%	58%	52%	11%	30%	35%

100% AR

ADJ IMF: 1.75 / 65 ADJ REA: 12.72 / 100
WDA: 2.57 DAM'S MPPA: 107

reference sire



100% AR

TAC WALLACE B112

REG
1729646

LJC MISSION STATEMENT P27
GP WALLACE 016
GP FAITH 803

3SCC ZEPPLIN S99
3SCC BRANDY Y112
3SCC BRANDY R44

LJC LANCER 806
LJC HANNAH 106
LCC FIELD DAY A614N
LSF FAITH LA416
RRM ET GRAND CANYON HANNAH
SCC ADELLE N286
BECKTON LANCER F270 T
MISS L HEAVENLY 4008

HB	GM	CED	BW	WW	YW	MLK	ME	HP	CEM	ST	MB	YG	CW	REA	BF
190	49	7	1.9	75	122	19	7	7	4	21	0.00	-0.06	23	0.36	-0.00
21%	30%	93%	94%	6%	5%	82%	94%	95%	90%	5%	98%	4%	43%	8%	8%

WALLACE B112 SONS Sell as lots 40-41

Lots 38 and 39 are out of a Wallace son with the same characteristics as his sire.



LOT 40



LOT 41

40 TAC WALLACE G525

REG
4230082
DOB
04/07/19
TAT
G525

GP WALLACE 016
TAC WALLACE B112
3SCC BRANDY Y112

TAC FRED A25
TAC ANGELA C335
OLC ANGELA R435

LJC MISSION STATEMENT P27
GP FAITH 803
3SCC ZEPPLIN S99
3SCC BRANDY R44
SPUR GROUND POUNDER Y114
2RJL SIERRA Y725
OLC KING ROB M185
OLC ANGELA H611

CALVING EASE
★★

ACT BW: 79 / 99 205 WT: 476 / 102 365 WT: 956 / 98

HB	GM	CED	BW	WW	YW	MLK	ME	HP	CEM	ST	MB	YG	CW	REA	BF
184	47	11	-1.1	58	94	26	2	9	7	19	0.22	0.04	13	0.03	0.01
26%	62%	68%	56%	50%	46%	24%	74%	88%	49%	12%	90%	16%	77%	46%	20%

100% AR

ADJ IMF: 2.38 / 86 ADJ REA: 13.10 / 113
WDA: 2.56 DAM'S MPPA: 103

41 TAC WALLACE G477

REG
4230066
DOB
03/30/19
TAT
G477

GP WALLACE 016
TAC WALLACE B112
3SCC BRANDY Y112

BROWN JYJ REDEMPTION Y1334
TAC TORYANNA B227
BIEBER TORYANNA 227Z

LJC MISSION STATEMENT P27
GP FAITH 803
3SCC ZEPPLIN S99
3SCC BRANDY R44
BECKTON NEBULA P P707
JYJ MS JOLENE W16
LSF TAKEOVER 9943W
BIEBER TORYANNA 317W

CALVING EASE
★★★

ACT BW: 77 / 94 205 WT: 495 / 106 365 WT: 1041 / 107

HB	GM	CED	BW	WW	YW	MLK	ME	HP	CEM	ST	MB	YG	CW	REA	BF
175	47	13	-2.3	56	92	23	0	9	6	18	0.26	0.01	13	0.12	0.01
41%	65%	43%	29%	59%	52%	55%	50%	85%	71%	27%	82%	11%	79%	27%	26%

100% AR

ADJ IMF: 2.34 / 85 ADJ REA: 12.87 / 111
WDA: 2.80 DAM'S MPPA: 99

reference sire



100% AR

TAC BLOCKADE E66

REG
3854621

5L DEFENDER 560-30Z
5L BLOCKADE 2218-30B
5L OPAL 656-2218

BIEBER HARD DRIVE Y120
3SCC VERNA B47
3SCC VERNA U105

5L ADVOCATE 817-14W
5L BLACK ADINA 525-560
O C C PROTOTYPE 847P
5L OPAL 0052-656
LACY GOLD BAR 8123
BIEBER LAURA 158W
BASIN TREND SETTER 4555
3SCC VERNA S154

HB	GM	CED	BW	WW	YW	MLK	ME	HP	CEM	ST	MB	YG	CW	REA	BF
165	51	13	-1.9	69	110	15	0	9	5	15	0.83	0.01	32	0.35	0.01
55%	8%	46%	38%	15%	16%	95%	55%	82%	87%	62%	3%	12%	18%	8%	22%

BLOCKADE SONS Sell as lots 42-47

E66 was our high selling bull two years ago, along with several full brothers that also sold very well. His scan data was off the charts, so we decided to use him on a group of cows. You will definitely want to look at this sire group. Early growth, marbling, ribeye, and big yearling weights add up to a prime carcass. Backed by our B47 donor who is a great cow with an awesome foot and leg under her, added rib shape, and awesome udder.



LOT 42



LOT 43

42 TAC BLOCKADE G32

REG
4230020
DOB
02/17/19
TAT
G32

5L BLOCKADE 2218-30B
TAC BLOCKADE E66
3SCC VERNA B47

BROWN RED OAK A7639
TAC RUBY E396
JAG RUBY 914W

5L DEFENDER 560-30Z
5L OPAL 656-2218
BIEBER HARD DRIVE Y120
3SCC VERNA U105
HUST CHIEF SEQUOYA R336
BROWN MS P707 Y7686
BROWN COMMITMENT S7206
LONE ROCK MS ESSEX 376

CALVING EASE
★★★

ACT BW: 75 / 102 205 WT: 608 / 109 365 WT: 1112 / 106

HB	GM	CED	BW	WW	YW	MLK	ME	HP	CEM	ST	MB	YG	CW	REA	BF
185	49	15	-3.4	62	94	21	0	9	7	17	0.75	0.10	18	0.02	0.02
25%	20%	15%	14%	34%	46%	78%	49%	86%	57%	35%	2%	48%	58%	50%	53%

100% AR

ADJ IMF: 5.24 / 167 ADJ REA: 11.61 / 93
WDA: 2.75 DAM'S MPPA: 104

43 TAC BLOCKADE G177

REG
4229880
DOB
02/27/19
TAT
G177

5L BLOCKADE 2218-30B
TAC BLOCKADE E66
3SCC VERNA B47

BROWN RED OAK A7639
TAC PRINCESS ANN D122
VF PRINCESS ANN A236-054

5L DEFENDER 560-30Z
5L OPAL 656-2218
BIEBER HARD DRIVE Y120
3SCC VERNA U105
HUST CHIEF SEQUOYA R336
BROWN MS P707 Y7686
LJC MISSION STATEMENT P27
LARSON PRINCESS ANN 054-409

CALVING EASE
★★

ACT BW: 85 / 115 205 WT: 496 / 103 365 WT: 1049 / 102

HB	GM	CED	BW	WW	YW	MLK	ME	HP	CEM	ST	MB	YG	CW	REA	BF
170	50	12	-1.2	68	109	18	0	9	6	16	0.61	0.06	28	0.16	0.01
51%	14%	57%	53%	11%	12%	91%	50%	78%	73%	55%	10%	25%	21%	20%	24%

100% AR

ADJ IMF: 3.73 / 103 ADJ REA: 11.47 / 91
WDA: 2.63 DAM'S MPPA: 96

44 TAC BLOCKADE G56

REG 4230090
DOB 02/19/19
TAT G56
CALVING EASE ★★

5L BLOCKADE 2218-30B
TAC BLOCKADE E66
3SCC VERNA B47

5L DEFENDER 560-30Z
5L OPAL 656-2218
BIEBER HARD DRIVE Y120
3SCC VERNA U105
BECKTON NEBULA M045
BECKTON LANA M809 EP
HXC CONQUEST 4405P
EIR Y218

BECKTON NEBULA P P707
TAC VENUS D54
EIR A203

ACT BW: 78 / 205 WT: 466 / 365 WT: 940 /

HB	GM	CED	BW	WW	YW	MLK	ME	HP	CEM	ST	MB	YG	CW	REA	BF
182	50	15	-3.5	63	102	22	4	10	7	17	0.69	0.11	26	0.05	0.02
29%	15%	17%	12%	28%	24%	61%	87%	66%	50%	43%	5%	55%	29%	43%	46%

ADJ IMF: 4.37 / 163 ADJ REA: 12.14 / 96
WDA: 2.63 DAM'S MPPA: 100

100% AR

47 TAC BLOCKADE G73

REG 4230112
DOB 02/15/19
TAT G73
CALVING EASE ★

5L BLOCKADE 2218-30B
TAC BLOCKADE E66
3SCC VERNA B47

5L DEFENDER 560-30Z
5L OPAL 656-2218
BIEBER HARD DRIVE Y120
3SCC VERNA U105
LACY GOLD BAR 8123
BIEBER LAURA 158W
A-1 HAY MAKER 511V
BIEBER TILLY 271U

BIEBER HARD DRIVE Y120
TAC A52
BIEBER TILLY 352Y

ACT BW: 83 / 102 205 WT: 484 / 93 365 WT: 1000 / 98

HB	GM	CED	BW	WW	YW	MLK	ME	HP	CEM	ST	MB	YG	CW	REA	BF
158	51	9	-0.8	69	108	17	4	9	3	15	0.73	0.03	31	0.29	0.01
70%	4%	88%	64%	10%	13%	95%	88%	78%	98%	63%	3%	15%	15%	7%	26%

ADJ IMF: 5.39 / 137 ADJ REA: 13.07 / 99
WDA: 2.76 DAM'S MPPA: 99

100% AR

45 TAC BLOCKADE G247

REG 4229992
DOB 03/01/19
TAT G247
CALVING EASE ★★

5L BLOCKADE 2218-30B
TAC BLOCKADE E66
3SCC VERNA B47

5L DEFENDER 560-30Z
5L OPAL 656-2218
BIEBER HARD DRIVE Y120
3SCC VERNA U105
BROWN PARAMOUNT X7879
BROWN MS REVELATION T7650
COLEY'S MOJITO 503R
JDRA MS SOFFI 122

LSF RAB PERFORMANCE 2772Z
LAZY MS BRIER 494-976
LAZY MISS WANETTE 976-122

ACT BW: 73 / 91 205 WT: 457 / 98 365 WT: 930 / 95

HB	GM	CED	BW	WW	YW	MLK	ME	HP	CEM	ST	MB	YG	CW	REA	BF
179	49	13	-2.0	60	97	19	1	9	6	17	0.62	0.06	24	0.17	0.02
34%	23%	40%	37%	40%	38%	85%	65%	79%	74%	33%	10%	27%	33%	19%	44%

ADJ IMF: 3.83 / 139 ADJ REA: 12.00 / 103
WDA: 2.44 DAM'S MPPA: 99

100% AR



5L BLOCKADE 2218-30B

46 TAC BLOCKADE G64

REG 4230110
DOB 02/15/19
TAT G64
CALVING EASE ★★

5L BLOCKADE 2218-30B
TAC BLOCKADE E66
3SCC VERNA B47

5L DEFENDER 560-30Z
5L OPAL 656-2218
BIEBER HARD DRIVE Y120
3SCC VERNA U105
LSF PROSPECT 2035Z
VF PRINCESS ANN A236-054
TBLC CHEYENNE 605
TBLC MISS TANK 678

TAC PROSPECT C2
TAC PROSPECTING CHEYENNE E50
TBLC MISS 605 CHEYENNE 191

ACT BW: 83 / 110 205 WT: 546 / 98 365 WT: 900 / 86

HB	GM	CED	BW	WW	YW	MLK	ME	HP	CEM	ST	MB	YG	CW	REA	BF
172	49	11	-1.0	71	112	21	2	10	6	16	0.61	0.09	32	0.23	0.03
48%	16%	67%	58%	6%	8%	72%	70%	61%	73%	51%	10%	39%	12%	11%	55%

ADJ IMF: 1.74 / 55 ADJ REA: 13.97 / 112
WDA: 2.23 DAM'S MPPA: 99

100% AR

48 TAC BLOCKADE G18

REG 4230312
DOB 02/15/19
TAT G18
CALVING EASE ★★

5L DEFENDER 560-30Z
5L BLOCKADE 2218-30B
5L OPAL 656-2218

5L ADVOCATE 817-14W
5L BLACK ADINA 525-560
O C C PROTOTYPE 847P
5L OPAL 0052-656
BIEBER ROOSEVELT W384
BIEBER TILLY 399W
3SCC NEW BANDOLIER S152
3SCC SIERRA T344

BIEBER ROLLIN DEEP Y118
TAC SIERRA E192
3SCC SIERRA W307 DKD

ACT BW: 72 / 205 WT: 611 / 365 WT: 1095 /

HB	GM	CED	BW	WW	YW	MLK	ME	HP	CEM	ST	MB	YG	CW	REA	BF

ADJ IMF: 5.73 / 0 ADJ REA: 14.07 / 0
WDA: 2.96 DAM'S MPPA:

100% AR

Lot 48 is the only direct Blockade son that we have to offer. He is definitely a big time growth bull that will be an asset to his new owner. Out of a first calf heifer and still one of the heaviest to offer. The Blockade females are making excellent females. Fixes udder structure and teat size in one turn, but will not add any milk to those cows that are borderline milkers. Updated EPDs will be available sale day and on tacattle.com.



reference sire



TAC A191

49

TAC TAKEOVER G310

REG 4230330

DOB 03/15/19

TAT G310

CALVING EASE ★★

LSF TAKEOVER 9943W
TAC A191
TBLC MISS 605 CHEYENNE 191

BUF CRK LANCER T235
BUF CRK BERRY X121
BUF CRK BERRY T201

HXC CONQUEST 4405P
LSF WIDELOAD R5014 U8061
TBLC CHEYENNE 605
TBLC MISS TANK 678
BUF CRK LANCER F M328
BUF CRK PINETA 4500
BFCK CHEROKEE CNYN 4912
BUF CRK BERRY N005

ACT BW: 75 / 92 205 WT: 502 / 97 365 WT: 1015 / 101

HB	GM	CED	BW	WW	YW	MLK	ME	HP	CEM	ST	MB	YG	CW	REA	BF
161	49	15	-3.8	56	87	21	-2	11	7	14	0.66	0.16	13	-0.12	0.04
66%	22%	13%	9%	59%	63%	74%	35%	47%	50%	81%	6%	81%	80%	83%	84%

100% AR

ADJ IMF: 2.72 / 116 ADJ REA: 11.33 / 88
WDA: 2.86 DAM'S MPPA: 98

Had to offer a Takeover. Still the king for calf vigor. Maternal brother to TAC A191 sells as lot 39. Calving ease candidate with a very maternal pedigree.

reference sire



3SCC DICTATE C74

50

TAC DICTATE G45

REG 4230058

DOB 02/15/19

TAT G45

CALVING EASE ★★

3SCC DOMINOR W338
3SCC DICTATE C74
MESSMER GINNIE V536

5L BLOCKADE 2218-30B
TAC SIERRA E126
2RJL SIERRA Y725

BECKTON DOMINOR T122 Z1
SCC MISS EXT KAREN J6444
BECKTON JULIAN GG B571
MESSMER GINNIE 9862
5L DEFENDER 560-30Z
5L OPAL 656-2218
UBAR HIGH CAPACITY 224
3SCC SIERRA U316

ACT BW: 75 / 100 205 WT: 472 / 85 365 WT: 952 / 91

HB	GM	CED	BW	WW	YW	MLK	ME	HP	CEM	ST	MB	YG	CW	REA	BF
179	50	13	-1.8	66	116	24	1	11	4	17	0.36	0.10	29	0.27	0.04
35%	10%	35%	40%	18%	5%	42%	65%	59%	92%	43%	58%	49%	17%	9%	85%

100% AR

ADJ IMF: 4.15 / 132 ADJ REA: 11.07 / 89
WDA: 2.28 DAM'S MPPA: 94

Heifer bull candidate that looks like he will leave behind one heck of a group of females.

51

TAC RED ROCK G75

REG 4230114

DOB 02/15/19

TAT G75

CALVING EASE ★★

BROWN RED OAK A7639
TAC RED ROCK D113
VF PRINCESS ANN A236-054

TAC REVISION C75 ET
TAC EBV E124
TAC EBV C329

HUST CHIEF SEQUOYA R336
BROWN MS P707 Y7686
LJC MISSION STATEMENT P27
LARSON PRINCESS ANN 054-409
BROWN JYJ REDEMPTION Y1334
3SCC BRANDY Y112
TAC FRED A25
HATS EBV 5R2

ACT BW: 75 / 100 205 WT: 515 / 93 365 WT: 1084 / 103

HB	GM	CED	BW	WW	YW	MLK	ME	HP	CEM	ST	MB	YG	CW	REA	BF
175	48	9	-0.3	69	112	25	-2	12	5	17	0.41	0.14	22	-0.01	0.03
41%	40%	89%	74%	10%	8%	34%	34%	28%	83%	31%	45%	73%	41%	55%	71%

100% AR

ADJ IMF: 2.50 / 80 ADJ REA: 12.87 / 103
WDA: 2.61 DAM'S MPPA: 97

Red Rock son that is an eye catcher. I saw Red Rock last year and was truly impressed with him as a mature bull. High growth cattle with carcass.

DVAuction
Broadcasting Real-Time Auctions

ONLINE BIDDING

Visit DVAuction.com before April 1, 2020 to sign up for online bidding. The sale will be broadcast live on DVAuction.com.

reference sire



100% AR

TAC PROSPECT C2

REG
3504347

LSF NIGHT CALVER 9921W
LSF PROSPECT 2035Z
LSF BLACKBIRD N3080 X0406

LJC MISSION STATEMENT P27
VF PRINCESS ANN A236-054
LARSON PRINCESS ANN 054-409

MESSMER PACKER S008
LSF DELLA P4078 U8051
BIEBER ROMERO 9136
LSF BLACKBIRD 4055 N3080
LJC LANCER 806
LJC HANNAH 106
LORENZEN PRIME CUT 7102
LARSON PRINCESS ANN 409-211

HB	GM	CED	BW	WW	YW	MLK	ME	HP	CEM	ST	MB	YG	CW	REA	BF
153	50	9	-0.3	78	131	27	5	14	9	13	0.32	0.07	36	0.51	0.05
72%	12%	87%	69%	3%	2%	22%	85%	14%	24%	85%	64%	28%	11%	4%	85%

PROSPECT SONS

Sell as lots 52-53

High growth cattle that just flat out perform. Prospect's dam is a breed leader for growth and performance, was in the top 10 of the entire breed last time I looked. Terminal deluxe!

53

TAC PROSPECT G60



REG
4230106

DOB
02/15/19

TAT
G60

CALVING EASE
★★

LSF PROSPECT 2035Z
TAC PROSPECT C2
VF PRINCESS ANN A236-054

TAC A191
TAC PRINCESS ANN E28
TAC PRINCESS ANN C77

LSF NIGHT CALVER 9921W
LSF BLACKBIRD N3080 X0406
LJC MISSION STATEMENT P27
LARSON PRINCESS ANN 054-409
LSF TAKEOVER 9943W
TBLC MISS 605 CHEYENNE 191
REDHILL B571 JULIAN 1W
LARSON PRINCESS ANN 054-409

ACT BW: 76 / 102 205 WT: 584 / 105 365 WT: 1123 / 107

HB	GM	CED	BW	WW	YW	MLK	ME	HP	CEM	ST	MB	YG	CW	REA	BF
157	50	11	-1.1	75	121	23	2	13	7	14	0.38	0.11	32	0.28	0.04
72%	14%	75%	56%	2%	2%	57%	74%	23%	57%	81%	52%	54%	12%	7%	87%

100% AR

ADJ IMF: 3.44 / 109 ADJ REA: 11.87 / 95
WDA: 2.76 DAM'S MPPA: 102



LOT 52



LOT 54

52

TAC PROSPECT G31



REG
4230018

DOB
02/17/19

TAT
G31

CALVING EASE
★★

LSF PROSPECT 2035Z
TAC PROSPECT C2
VF PRINCESS ANN A236-054

TAC WALLACE B112
TAC ABIGRACE E25
TAC ABIGRACE C143-L7730 ET

LSF NIGHT CALVER 9921W
LSF BLACKBIRD N3080 X0406
LJC MISSION STATEMENT P27
LARSON PRINCESS ANN 054-409
GP WALLACE 016
3SCC BRANDY Y112
BECKTON NEW ERA Y194
BROWN MS ABIGRACE L7730

ACT BW: 77 / 103 205 WT: 596 / 107 365 WT: 1118 / 106

HB	GM	CED	BW	WW	YW	MLK	ME	HP	CEM	ST	MB	YG	CW	REA	BF
168	48	10	-0.9	68	112	25	7	12	7	16	0.30	0.06	28	0.29	0.03
54%	36%	79%	62%	11%	8%	30%	97%	29%	43%	53%	74%	25%	21%	7%	63%

100% AR

ADJ IMF: 2.02 / 64 ADJ REA: 13.41 / 107
WDA: 2.76 DAM'S MPPA: 103

54

TAC ALLEGIANCE G81



REG
4229884

DOB
02/22/19

TAT
G81

CALVING EASE
★★

LEACHMAN PLEDGE A282Z
HXC ALLEGIANCE 5502C
HXC 100Y

SDCC JACKHAMMER 731Y
TAC SIERRA B910
3SCC SIERRA W307 DKD

LSF NEXTPECTATION 0083X
LCOC ZARA TG004
BECKTON NEBULA P P707
HXC ZIMA 338N
HXC JACKHAMMER 8800U
RIDGE SANDY 206-582
3SCC NEW BANDOLIER S152
3SCC SIERRA T344

ACT BW: 85 / 110 205 WT: 475 / 98 365 WT: 1051 / 102

HB	GM	CED	BW	WW	YW	MLK	ME	HP	CEM	ST	MB	YG	CW	REA	BF
152	49	10	-0.2	56	87	20	-3	10	5	14	0.83	0.20	29	0.04	0.05
78%	19%	79%	75%	58%	63%	82%	27%	61%	83%	76%	1%	95%	19%	43%	96%

100% AR

ADJ IMF: 5.54 / 153 ADJ REA: 11.99 / 95
WDA: 2.72 DAM'S MPPA: 100

Allegiance son with loads of growth and carcass. His sons have topped bull sales around the country.

HARD DRIVE SONS

Sell as lots 55-56

Hard Drive full brothers that would work great together on a group of cows. Their dams are very moderate, high milking Tomahawk daughters. Hard Drive's are making some nice cows with great marbling.

DEFENDER SONS

Sell as lots 57-58

These two half brothers are out of a Defender son that was our pick from Sonstegard Red Angus in 2018. Should make a super set of replacements. They are black hided red carriers.

55 TAC HARD DRIVE G218

REG 4229888
DOB 03/02/19
TAT G218
CALVING EASE ★★

LACY GOLD BAR 8123
BIEBER HARD DRIVE Y120
BIEBER LAURA 158W

WEBR TOMAHAWK 1204
TAC MS RUBY D134
JAG RUBY 914W

CCF GOLD BAR 0251
LACY MS CHEROKEE 557P
LJC MISSION STATEMENT P27
BASIN LAURA 5301
WEBR DOC HOLLIDAY 2N
PFFR MS NYACK 237
BROWN COMMITMENT S7206
LONE ROCK MS ESSEX 376

ACT BW: 78 / 106 205 WT: 555 / 115 365 WT: 1060 / 103

HB	GM	CED	BW	WW	YW	MLK	ME	HP	CEM	ST	MB	YG	CW	REA	BF
165	50	12	-1.9	61	97	25	7	7	6	16	0.64	0.08	24	0.07	0.02
60%	11%	53%	40%	38%	37%	38%	98%	96%	77%	54%	8%	38%	34%	36%	32%

ADJ IMF: 4.18 / 116 ADJ REA: 13.12 / 104
WDA: 2.71 DAM'S MPPA: 104

100% AR

57 TAC DEFENDER G588

REG 4230100
DOB 04/22/19
TAT G588
CALVING EASE ★★

5L DEFENDER 560-30Z
3SCC DEFENDER E507
BSKF LARK C440

Dameron C-5 American Classic
TAC LADY C174
SDCC Lady 38T

5L ADVOCATE 817-14W
5L BLACK ADINA 525-560
VGW NAVIGATOR 010
3SCC LARK W794
EXG RS First Rate S903 R3
Dameron Northern Miss 3114
Kenny's Creek Sandy S15
Majesty 8185 of 7365 4465

ACT BW: 82 / 205 WT: 447 / 365 WT: 960 /

HB	GM	CED	BW	WW	YW	MLK	ME	HP	CEM	ST	MB	YG	CW	REA	BF
%	%	%	%	%	%	%	%	%	%	%	%	%	%	%	%

ADJ IMF: 2.35 / 0 ADJ REA: 11.44 / 0
WDA: 2.67 DAM'S MPPA:

100% AR

Updated EPDs will be available sale day and on tacattle.com.

56 TAC HARD DRIVE G124

REG 4229894
DOB 02/24/19
TAT G124
CALVING EASE ★★

LACY GOLD BAR 8123
BIEBER HARD DRIVE Y120
BIEBER LAURA 158W

WEBR TOMAHAWK 1204
TAC MS RUBY D126
JAG RUBY 914W

CCF GOLD BAR 0251
LACY MS CHEROKEE 557P
LJC MISSION STATEMENT P27
BASIN LAURA 5301
WEBR DOC HOLLIDAY 2N
PFFR MS NYACK 237
BROWN COMMITMENT S7206
LONE ROCK MS ESSEX 376

ACT BW: 72 / 98 205 WT: 493 / 96 365 WT: 867 / 94

HB	GM	CED	BW	WW	YW	MLK	ME	HP	CEM	ST	MB	YG	CW	REA	BF
168	50	12	-1.9	60	95	25	6	7	6	16	0.69	0.10	24	0.06	0.02
54%	11%	54%	38%	42%	42%	30%	95%	96%	80%	47%	5%	46%	33%	41%	42%

ADJ IMF: 4.35 / 137 ADJ REA: 11.72 / 93
WDA: 2.28 DAM'S MPPA: 98

100% AR

58 TAC DEFENDER G414

REG 4230040
DOB 03/25/19
TAT G414
CALVING EASE ★★

5L DEFENDER 560-30Z
3SCC DEFENDER E507
BSKF LARK C440

Plainview Lutton E102
HB 529-30
HB 375-35

5L ADVOCATE 817-14W
5L BLACK ADINA 525-560
VGW NAVIGATOR 010
3SCC LARK W794
Exar Lutton 1831
Plainview Pride C123
Herrings Maxi Million H A R
HB 268-07

ACT BW: 86 / 205 WT: 447 / 365 WT: 996 /

HB	GM	CED	BW	WW	YW	MLK	ME	HP	CEM	ST	MB	YG	CW	REA	BF
%	%	%	%	%	%	%	%	%	%	%	%	%	%	%	%

ADJ IMF: 3.54 / 0 ADJ REA: 12.49 / 0
WDA: 2.69 DAM'S MPPA:

100% AR

Updated EPDs will be available sale day and on tacattle.com.



TAC MOVIN DEEPER D178

59 TAC MOVIN DEEPER G559

REG 4230088
DOB 04/14/19
TAT G559
CALVING EASE ★★

BIEBER ROLLIN DEEP Y118
TAC MOVIN DEEPER D178
VF TAMARA A196-545

3SCC DOMAIN A163
3SCC MILLIE C55
3SCC MILLIE X37

BIEBER ROOSEVELT W384
BIEBER TILLY 399W
LARSON MASTERPIECE 009
LARSON TAMARA 545-556
BECKTON DOMINOR T122 Z1
3SCC EUCLA X723
K F BANDOLIER 814
JRRR MILLIE'S EQUAL M206

ACT BW: 80 / 99 205 WT: 577 / 104 365 WT: 1098 / 104

HB	GM	CED	BW	WW	YW	MLK	ME	HP	CEM	ST	MB	YG	CW	REA	BF
213	49	10	-0.7	61	100	31	5	12	5	22	0.56	0.11	22	0.19	0.04
3%	24%	80%	64%	35%	30%	1%	93%	32%	86%	1%	16%	55%	41%	17%	91%

ADJ IMF: 2.66 / 85 ADJ REA: 14.41 / 115
WDA: 2.98 DAM'S MPPA: 100

100% AR

One of the youngest in the offering but still weighed up there with his older contemporaries. He is out of a very consistent Domain cow that has one every year.

60 TAC UNCHARTED G463

REG
4230320

DOB
03/28/19

TAT
G463

CALVING EASE
★★

5L THE REAL DEAL 1687-143B
5L PERFECT STORM 1201-172D
5L RUBY 829-1201

WDZ FIREMAKER 6062 P ET
JR MISS FIREMAKER A23
JR MISS LIMINATOR S1

5L DEFENDER 560-30Z
5L FIREFLY 275-1687
BUF CRK THE RIGHT KIND U199
5L RUBY 162-829
M6 GRID MAKER 104 PET
THOMASSWISSERSWEET1764ET
SKYMONT P UNLIMITED 0115
JR SHOWQUEEN P2

ACT BW: 91 / 109 205 WT: 555 / 365 WT: 1157 /

HB	GM	CED	BW	WW	YW	MLK	ME	HP	CEM	ST	MB	YG	CW	REA	BF
118	52	11	-0.8	60	88	22	-2	6	4	10	0.38	-0.62	12	0.42	-0.07
97%	1%	76%	64%	43%	61%	64%	31%	98%	95%	97%	52%	1%	81%	3%	1%

50% AR 50% CH

ADJ IMF: 1.84 / ADJ REA: 14.03 /
WDA: 3.19 DAM'S MPPA:

I think this bull will impress even the most critical cattlemen. We don't have many Charolais cows around, but if they all looked like A23, I would have more. Really cool on paper for both making feeder cattle and the butterscotch replacements that you could put together. I really like this bull.



reference sire

WC UNCHARTED 7328 P

REG
M898749



LT RUSHMORE 8060 PLD
CCC WC RESOURCE 417 P
WC CCC BLUE GIRL 1528

WC CAPITAL GAIN 2220 P E
WC BRENDA 4035 P
WC BRENDA 2005

LT RIO BRAVO 3181 P
LT BRENDA'S EASE 3055PLD
LT BLUE VALUE 7903 ET
CCC BAD GIRLFRIEND U146 P ET
LT LEDGER 0332 P
JWK CLARICE J139 ET
LT LONG DISTANCE 9001 PLD
WC BRENDA'S VALUE 9533

CE	BW	WW	YW	MLK	MCE	MTL	SC	CW	REA	FAT	MB	TSI
6.2	-0.2	60	92	24	1.9	55	0.9	37	1.07	0.021	0.13	231
45%	35%	1%	4%	2%	85%	1%	50%	2%	3%	90%	40%	7%

UNCHARTED SONS Sell as lots 61-64

Uncharted was the high selling bull at Wright Charolais last spring commanding \$158,000. I believe we are one of three breeders that will have calves sired by this breed leader. Unmatched for his WW, YW, Marbling, and Ribeye in the breed. What a set of feeder cattle these half brothers will bring to the table.

61 TAC UNCHARTED G86

REG
4230332

DOB
02/22/19

TAT
G86

CALVING EASE
★★

CCC WC RESOURCE 417 P
WC UNCHARTED 7328 P
WC BRENDA 4035 P

BROWN JYJ REDEMPTION Y1334
TAC MS B6
COMMERCIAL RED ANGUS

LT RUSHMOHRE 8060 PLD
WC CCC BLUE GIRL 1528 P
WC CAPITAL GAIN 2220 P ET
WC BRENDA 2005 P
BECKTON NEBULA P P707
JYJ MS JOLENE W16

ACT BW: 90 / 205 WT: 589 / 365 WT: 1076 /

HB	GM	CED	BW	WW	YW	MLK	ME	HP	CEM	ST	MB	YG	CW	REA	BF
%	%	%	%	%	%	%	%	%	%	%	%	%	%	%	%

7.8% AR 42.2% CH 50% COMM RED

ADJ IMF: 2.27 / 0 ADJ REA: 15.29 / 0
WDA: 3.06 DAM'S MPPA:



RED ANGUS BULLS



LOT 62



LOT 64

62 TAC UNCHARTED G236

REG 4230328
DOB 03/01/19
TAT G236
CALVING EASE ★★

CCC WC RESOURCE 417 P
WC UNCHARTED 7328 P
WC BRENDA 4035 P

LT RUSHMOHRE 8060 PLD
WC CCC BLUE GIRL 1528 P
WC CAPITAL GAIN 2220 P ET
WC BRENDA 2005 P
RED BRYLOR PASQUALE 213P
RED CYT FANNY 15P
KF RIGHT TIME 635
BSKF HANNAH R264

RED BRYLOR SQUALL 230S
3SCC HANNAH X127
3SCC HANNAH U505

ACT BW: 85 / 103 205 WT: 495 / 96 365 WT: 975 / 97

HB	GM	CED	BW	WW	YW	MLK	ME	HP	CEM	ST	MB	YG	CW	REA	BF
6	46	6	0.2	57	75	15	0	6	0	0	0.16	0.00	1	0.16	-0.04
99%	87%	98%	81%	56%	87%	97%	50%	98%	99%	99%	96%	9%	98%	20%	1%

57.8% AR 42.2% CH
ADJ IMF: 2.22 / 94 ADJ REA: 14.30 / 111
WDA: 2.79 DAM'S MPPA: 94

64 TAC UNCHARTED G95

REG 4230322
DOB 02/24/19
TAT G95
CALVING EASE ★★

CCC WC RESOURCE 417 P
WC UNCHARTED 7328 P
WC BRENDA 4035 P

LT RUSHMOHRE 8060 PLD
WC CCC BLUE GIRL 1528 P
WC CAPITAL GAIN 2220 P ET
WC BRENDA 2005 P
BIEBER H HUGHES W109
OLC ANGELA R435

TAC SHOOTER A435
TAC MS E19
COMMERCIAL RED ANGUS

ACT BW: 98 / 205 WT: 462 / 365 WT: 984 /

HB	GM	CED	BW	WW	YW	MLK	ME	HP	CEM	ST	MB	YG	CW	REA	BF
%	%	%	%	%	%	%	%	%	%	%	%	%	%	%	%

7.8% AR 42.2% CH 50% COMM RED
ADJ IMF: 2.63 / 0 ADJ REA: 10.72 / 0
WDA: 2.68 DAM'S MPPA:

63 TAC UNCHARTED G227

REG 4230324
DOB 03/03/19
TAT G227
CALVING EASE ★★

CCC WC RESOURCE 417 P
WC UNCHARTED 7328 P
WC BRENDA 4035 P

LT RUSHMOHRE 8060 PLD
WC CCC BLUE GIRL 1528 P
WC CAPITAL GAIN 2220 P ET
WC BRENDA 2005 P
BIEBER H HUGHES W109
OLC ANGELA R435

TAC SHOOTER A435
TAC MS D108
COMMERCIAL RED ANGUS

ACT BW: 83 / 205 WT: 382 / 365 WT: 960 /

HB	GM	CED	BW	WW	YW	MLK	ME	HP	CEM	ST	MB	YG	CW	REA	BF
%	%	%	%	%	%	%	%	%	%	%	%	%	%	%	%

7.8% AR 42.2% CH 50% COMM RED
ADJ IMF: 2.54 / 0 ADJ REA: 12.33 / 0
WDA: 2.58 DAM'S MPPA:



BLACK ANGUS BULLS

PAYWEIGHT PLUS SONS

Sell as lots 65-66

These Payweight Plus cattle just get it done. They come small, have great calf vigor, and grow fast. Where I think they will really excel are the heifer replacements that they bring to the herd. Moderate, deep, and thick made cattle. Hard to pick a hole in.

reference sire



BASIN PAYWEIGHT PLUS 6048



LOT 65



LOT 66

65 TAC PAYWEIGHT PLUS G200

REG 19687943	Basin Payweight 1682 Basin Payweight Plus 6048 EXAR Royal Lass 2810		Basin Payweight 006S 21AR O Lass 7017 Connealy Consensus 7229 Exar Royal Lass 1067 F V 20K King 308M S A V Primrose Mistress 1170 WAR New Level 5203 9009 F A R Bonnie Brae 552R										
DOB 02/28/19	S A V King of Mountain 8200 FAR Bonnie Brae 343B F A R Bonnie Brae 220T												
TAT G200													
CALVING EASE ★★★★	ACT BW: 74 / 99 205 WT: 454 / 102 365 WT: 923 / 101												
CED	BW	WW	YW	MLK	\$EN	CW	MB	RE	FAT	\$W	\$F	\$G	\$B
14	-0.9	55	103	33	-16	39	0.59	0.36	0.024	64	87	46	133
4%	10%	50%	40%	10%	65%	55%	45%	80%	70%	25%	40%	50%	45%

100% ANGUS

ADJ IMF: 2.92 / 99 ADJ REA: 13.1 / 102

66 TAC PAYWEIGHT PLUS G234

REG 19687935	Basin Payweight 1682 Basin Payweight Plus 6048 EXAR Royal Lass 2810		Basin Payweight 006S 21AR O Lass 7017 Connealy Consensus 7229 Exar Royal Lass 1067 Ring Creek Burl Ives 88Y HF Black Lady 267B HF Black Lady 136W										
DOB 03/01/19	Ring Creek Burl Ives 88Y HF Black Lady 267B HF Black Lady 136W		Basin Payweight 006S 21AR O Lass 7017 Connealy Consensus 7229 Exar Royal Lass 1067 Ring Creek Bardolene 69W Heather of Ring Creek 447W HF Hemi 151T Windover Black Lady 37P										
TAT G234													
CALVING EASE ★★★★	ACT BW: 78 / 104 205 WT: 439 / 98 365 WT: 908 / 99												
CED	BW	WW	YW	MLK	\$EN	CW	MB	RE	FAT	\$W	\$F	\$G	\$B
7	1.2	60	105	28	-7	33	0.44	0.46	0.020	62	78	41	119
45%	50%	35%	35%	25%	40%	70%	60%	65%	65%	30%	65%	60%	65%

100% ANGUS

ADJ IMF: 2.97 / 101 ADJ REA: 12.6 / 98



67 **BFJV MR HAMMER DOWN G021**

REG 19691299
DOB
TAT G021
CALVING EASE ★★★

Exar Lutton 1831
Lazy H Bar Hammer Down 722
Lazy H Bar Forever Lady 5001

EXAR Blue Chip 1877B
Lazy H Bar ForeverLady 6135
Lazy H Bar Forever Lady 039

Northern Improvement 4480 GF
Exar Saras Dream 9809
BR Midland
VA R Forever Lady 4304
Dameron First Class
Greens Princess 1012
Gambles Hot Rod
Lazy H Bar Forever Lady 5001

ACT BW: / 205 WT: 700 365 WT: 1200

CED	BW	WW	YW	MLK	\$EN	CW	MB	RE	FAT	\$W	\$F	\$G	\$B
-5	5.8	69	114	20	-29	48	0.47	0.36	0.008	48	99	42	141
%	%	%	%	%	%	%	%	%	%	%	%	%	%

100% ANGUS

Projected EPDs listed. Updated EPDs will be available sale day.

69 **TAC COLD CASH G255**

REG 19686107
DOB 03/01/19
TAT G255
CALVING EASE ★★★

Barstow Cash
Tac Cold Cash D179
O C C Juanada 603R

Sitz Upward 307R
T K Elba X148
T K Elba R217

Sitz Dash 10277
Barstow Queen W16
O C C Glory 950G
O C C Juanada 856F
Connealy Onward
Sitz Henrietta Pride 81M
TC Franchise 360
T K Elba 929

ACT BW: 80 / 107 205 WT: 444 / 94 365 WT: 982 / 92

CED	BW	WW	YW	MLK	\$EN	CW	MB	RE	FAT	\$W	\$F	\$G	\$B
9	1.5	49	92	17	-10	37	0.29	0.43	0.022	37	82	33	114
30%	55%	70%	60%	95%	50%	60%	80%	70%	65%	90%	55%	80%	75%

100% ANGUS

ADJ IMF: 2.63 / 97 ADJ REA: 11.6 / 99

68 **TAC TRANSFORMER G226**

REG 19687855
DOB 03/03/19
TAT G226
CALVING EASE ★★★

V A R Generation 2100
Flying V Transformer
Flying V Miss Pride 95Z

Connealy Confidence 0100
D 0100 Lauren B453
D FP Lauren Z252

Connealy Consensus 7229
Sandpoint Blackbird 8809
S A V Bismarck 5682
Flying V Miss Pride 11W
Connealy Tobin
Becka Gala of Conanga 8281
Connealy Final Product
D 860 Lauren P4300

ACT BW: 77 / 103 205 WT: 502 / 106 365 WT: 1116 / 104

CED	BW	WW	YW	MLK	\$EN	CW	MB	RE	FAT	\$W	\$F	\$G	\$B
12	1.0	60	110	24	-19	46	0.48	0.71	0.009	58	95	47	142
10%	45%	35%	25%	55%	75%	35%	55%	25%	50%	40%	25%	45%	30%

100% ANGUS

ADJ IMF: 3.38 / 124 ADJ REA: 11.2 / 96

70 **TAC COLONEL G172**

REG 19689832
DOB 02/27/19
TAT G172
CALVING EASE ★★★

baldrige Xpand x743
Baldrige Colonel C251
Baldrige Isabel Y69

Barstow Cash
Tac Judy D22
HB 701-30

Hoover Dam
Baldrige Queen S87
Styles Upgrade J59
Baldrige Isabel T935
Sitz Dash 10277
Barstow Queen W16
Plainview Lutton E102
HB466-41

ACT BW: 65 / 91 205 WT: 477 / 101 365 WT: 1115 / 104

CED	BW	WW	YW	MLK	\$EN	CW	MB	RE	FAT	\$W	\$F	\$G	\$B
7	-0.3	56	108	19	-15	36	0.56	0.74	-0.011	46	82	53	135
45%	20%	45%	30%	90%	65%	65%	45%	25%	25%	75%	55%	30%	40%

100% ANGUS

ADJ IMF: 2.14 / 79 ADJ REA: 12.3 / 105

SIMANGUS BULLS



LOT 71

71

TAC COMMANDER G116



REG
3692525

DOB
02/24/19

TAT
G116

CALVING EASE
★★

EF COMMANDO 1366
BALDRIDGE COMMAND C036
BALDRIDGE BLACKBIRD A030

TJ FINAL COPY 267Z
HLTS CHLOE
MF YESSICA

EF COMPLEMENT 8088
RIVERBEND YOUNG LUCY W1470
HOOVER DAM
BALDRIDGE BLACKBIRD X89
S A V FINAL ANSWER 0035
TJ 34X
SFI FULL POWER W4
RHODES MINA P91

ACT BW: 85 / 97 205 WT: 562 / 108 365 WT: 1084 / 112

CE	BW	WW	YW	MCE	MLK	MWW	ST	DOC	CW	YG	MB	BF	RE	API	TI
12.8	-0.1	73.8	120.6	8.1	26.3	61.4	13.9	13.7	43.8	-0.14	0.72	-0.011	0.82	149.7	86.2
40%	35%	20%	10%	25%	15%	15%	70%	20%	10%	80%	2%	90%	20%	10%	2%

3/8 SM 5/8 AN

ADJ IMF: 3.41 / 147 ADJ REA: 15.52 / 106
WDA: 2.74

This Command son is a truck. Highest weaning and yearling weight ratios of all breeds. Puts it all together in an attractive package.

reference sire



BALDRIDGE COMMAND C036

reference sire



3/4 SM 1/4 AN

HOOKS XPECTATION 36X

REG
2559346

G A R PREDESTINED
GW PREDESTINED 701T
GW MISS LUCKY STRIKE 363

HOOKS SHEAR FORCE 38K
HOOKS MIKA 141M
HOOKS IRISH MAXINE 29K

B/R NEW DESIGN 036
G A R EXT 4206
GW LUCKY STRIKE 147G
KAPPES MOSES J213
NICHOLS LEGACY G151
C&D TRACY
BLACK IRISH KANSAS
ER MISS MAX63 36B

CE	BW	WW	YW	MCE	MLK	MWW	ST	DOC	CW	YG	MB	BF	RE	API	TI
14.1	-2.2	66.7	96.2	5.9	30.7	64.0	23.0	16.5	27.2	-0.37	0.45	-0.067	0.87	159.4	80.2
25%	10%	45%	60%	60%	3%	10%	1%	3%	65%	15%	25%	30%	10%	2%	10%

XPECTATION SIRE GROUP

Sell as lots 72-75

We used Xpectation last year to make females, but what we didn't know is how thick and easy feeding the bulls would be. As a sire group, he is by far the most consistent Simmental we have ever come across. They come moderate and flat out perform. They will leave behind a great set of females.



LOT 72



LOT 73

72 TAC XPECTATION G163

REG
3692520
DOB
02/28/19
TAT
G163
CALVING EASE
★★★

GW PREDESTINED 701T
HOOK'S XPECTATION 36X
HOOKS MIKA 141M

SPRINGCREEK LOTTO 52Y
ES A66
EST3

G A R PREDESTINED
GW MISS LUCKY STRIKE 363
HOOKS SHEAR FORCE 38K
HOOKS IRISH MAXINE 29K
KOP CROSBY 137W
SPRINGCREEK BLK TESS 25T
O C C PAXTON 730P
ESR31

ACT BW: 76 / 108 205 WT: 533 / 105 365 WT: 1027 / 108

CE	BW	WW	YW	MCE	MLK	MWW	ST	DOC	CW	YG	MB	BF	RE	API	TI
14.2	-1.2	63.6	91.7	8.2	32.1	63.7	22.3	12.8	21.9	-0.43	0.00	-0.084	0.87	130.0	66.0
25%	20%	55%	65%	20%	2%	10%	1%	30%	85%	10%	95%	15%	10%	40%	65%

3/4 SM 1/4 AN

ADJ IMF: 1.69 / 80 ADJ REA: 13.58 / 104
WDA: 2.61

73 TAC XPECTATION G176

REG
4230310
DOB
02/27/19
TAT
G176
CALVING EASE
★★

GW PREDESTINED 701T
HOOK'S XPECTATION 36X
HOOKS MIKA 141M

GP WALLACE 016
TAC MS DURHEIM D233
BIEBER DURHEIM 281Z

G A R PREDESTINED
GW MISS LUCKY STRIKE 363
HOOKS SHEAR FORCE 38K
HOOKS IRISH MAXINE 29K
LJC MISSION STATEMENT P27
GP FAITH 803
5L NORSEMAN KING 2291
BD3P DURHEIM 560

ACT BW: 85 / 106 205 WT: 478 / 99 365 WT: 894 / 97

HB	GM	CED	BW	WW	YW	MLK	ME	HP	CEM	ST	MB	YG	CW	REA	BF
205	49	13	-1.5	61	89	27	-4	12	6	20	0.36	-0.26	17	0.66	-0.03
6%	28%	48%	46%	35%	58%	15%	20%	37%	74%	6%	58%	1%	65%	1%	1%

60.9% AR 37.5% SM 1.6% XX

ADJ IMF: 2.34 / 85 ADJ REA: 10.87 / 85
WDA: 2.45 DAM'S MPPA: 103



LOT 74



LOT 75

74 TAC XPECT ALL G205

REG 3692526
DOB 03/01/19
TAT G205
CALVING EASE ★★

GW PREDESTINED 701T
HOOK'S XPECTION 36X
HOOKS MIKA 141M

MR HOC BROKER
TLLC 44B
TLLC MISTY 34Y

G A R PREDESTINED
GW MISS LUCKY STRIKE 363
HOOKS SHEAR FORCE 38K
HOOKS IRISH MAXINE 29K
SVF STEEL FORCE S701
JM BF H25
WAGR DRIVER 706T
41L

ACT BW: 83 / 99 205 WT: 475 / 92 365 WT: 906 / 93

CE	BW	WW	YW	MCE	MLK	MWW	ST	DOC	CW	YG	MB	BF	RE	API	TI
11.0	0.4	62.3	89.2	4.8	21.9	53.6	17.1	9.7	24.1	-0.39	0.17	-0.085	0.76	121.3	65.9
65%	50%	60%	70%	80%	50%	55%	35%	75%	75%	15%	75%	15%	25%	60%	70%

3/4 SM 1/8 AN 1/8 MA ADJ IMF: 2.30 / 99 ADJ REA: 14.00 / 96
WDA: 2.25

75 TAC XPECTION G260

REG 4230314
DOB 02/15/19
TAT G260
CALVING EASE ★★

GW PREDESTINED 701T
HOOK'S XPECTION 36X
HOOKS MIKA 141M

5L NORSEMAN KING 2291
BIEBER DURHEIM 281Z
BD3P DURHEIM 560

G A R PREDESTINED
GW MISS LUCKY STRIKE 363
HOOKS SHEAR FORCE 38K
HOOKS IRISH MAXINE 29K
VGW KING OF THE WEST
NORSEMAN 1312 PJM
LCC SOUTHERN KING 1765K
DURHEIM 952

ACT BW: 80 / 97 205 WT: 490 / 101 365 WT: 948 / 103

HB	GM	CED	BW	WW	YW	MLK	ME	HP	CEM	ST	MB	YG	CW	REA	BF
186	48	13	-1.6	56	82	26	-8	12	6	18	0.35	-0.27	10	0.58	-0.03
24%	38%	46%	45%	59%	75%	26%	6%	34%	64%	28%	58%	1%	86%	1%	1%

59.4% AR 37.5% SM 3.1% XX ADJ IMF: 3.19 / 115 ADJ REA: 14.57 / 115
WDA: 2.69 DAM'S MPPA: 98

reference sire



PB SM

W/C BULLSEYE 3046A

REG 2790164

REMINGTON ON TARGET 2S
REMINGTON LOCK N LOAD 54U
BAR15 MISS KNIGHT 78E-51

WAGR DREAM CATCHER 03R
MISS WERNING KP 8543U
MISS WERNING 534R

REMINGTON RED LABEL HR
DRAKE SOFT TOUCH 15M
SV CHARLIES APPLAUSE
BAR15 MISS KNIGHT 83Y-78E
CNS DREAM ON L186
3C MELODY M668 BZ
R&R WAREHOUSE K609
MISS WERNING 934J

CE	BW	WW	YW	MCE	MLK	MWW	ST	DOC	CW	YG	MB	BF	RE	API	TI
15.9	-2.8	57.6	85.3	4.3	16.8	45.6	18.9	16.3	23.8	-0.65	-0.03	-0.117	1.29	137.1	68.1
3%	1%	95%	90%	70%	95%	99%	30%	2%	75%	1%	70%	45%	1%	20%	60%

BULLSEYE SIRE GROUP

Sell as lots 76-79

Bullseye calves come light with good calf vigor. Lots 76 and 77 are twin brothers that have checked all the boxes. Bullseye is backed by Ms Werning, who is the dam of several breed greats.



76 TAC BULLSEYE G6

REG **3692515**
 DOB **02/15/19**
 TAT **G6**
 CALVING EASE
 ★★★★★

REMINGTON LOCK N LOAD54U
W/C BULLSEYE 3046A
 MISS WERNING KP 8543U

RYMO MR REDCOAT R33Y
TAC RED COAT E103
 HATS LINDA 6R2

REMINGTON ON TARGET 2S
 BAR15 MISS KNIGHT78E-51G
 WAGR DREAM CATCHER 03R
 MISS WERNING 534R
 GW RED COAT 099TS
 RYMO MISS T2 333N

ACT BW: 60 / 205 WT: 479 / 365 WT: 886 /

CE	BW	WW	YW	MCE	MLK	MWW	ST	DOC	CW	YG	MB	BF	RE	API	TI
15.8	-3.1	48.8	71.7	7.2	17.7	42.0	14.0	14.6	13.4	-0.48	0.01	-0.094	0.83	114.8	59.0
15%	4%	95%	95%	35%	85%	99%	70%	15%	99%	3%	95%	10%	15%	70%	90%

3/4 SM 1/4 AR ADJ IMF: 1.49 / 100 ADJ REA: 12.97 / 100
 WDA: 2.26

78 TAC BULLSEYE G46

REG **3692547**
 DOB **02/16/19**
 TAT **G46**
 CALVING EASE
 ★★★★★

REMINGTON LOCK N LOAD54U
W/C BULLSEYE 3046A
 MISS WERNING KP 8543U

BROWN RED OAK A7639
TAC YVETTE E232
 TAC MS YVETT C206

REMINGTON ON TARGET 2S
 BAR15 MISS KNIGHT78E-51G
 WAGR DREAM CATCHER 03R
 MISS WERNING 534R
 HUST CHIEF SEQUOYA R336
 BROWN MS P707 Y7686
 MR NLC UPGRADE U8676
 SLGN PEEKS YVETT 139Y

ACT BW: 74 / 205 WT: 505 / 365 WT: 978 /

CE	BW	WW	YW	MCE	MLK	MWW	ST	DOC	CW	YG	MB	BF	RE	API	TI
13.4	-1.6	63.2	95.8	4.6	19.4	50.8	16.6	13.8	26.4	-0.34	0.15	-0.068	0.77	126.8	68.5
30%	15%	60%	60%	80%	75%	70%	40%	20%	65%	25%	80%	30%	25%	45%	55%

1/2 SM 1/2 AR ADJ IMF: 4.72 / 100 ADJ REA: 14.19 / 100
 WDA: 2.48

77 TAC BULLSEYE G11

REG **3692516**
 DOB **02/15/19**
 TAT **G11**
 CALVING EASE
 ★★★★★

REMINGTON LOCK N LOAD54U
W/C BULLSEYE 3046A
 MISS WERNING KP 8543U

RYMO MR REDCOAT R33Y
TAC RED COAT E103
 HATS LINDA 6R2

REMINGTON ON TARGET 2S
 BAR15 MISS KNIGHT78E-51G
 WAGR DREAM CATCHER 03R
 MISS WERNING 534R
 GW RED COAT 099TS
 RYMO MISS T2 333N

ACT BW: 56 / 205 WT: 496 / 365 WT: 903 /

CE	BW	WW	YW	MCE	MLK	MWW	ST	DOC	CW	YG	MB	BF	RE	API	TI
15.8	-3.1	48.8	71.7	7.2	17.7	42.0	14.0	14.6	13.4	-0.48	0.01	-0.094	0.83	114.8	59.0
15%	4%	95%	95%	35%	85%	99%	70%	15%	99%	3%	95%	10%	15%	70%	90%

3/4 SM 1/4 AR ADJ IMF: 1.89 / 100 ADJ REA: 12.97 / 100
 WDA: 2.32

79 TAC BULLSEYE G21

REG **3692528**
 DOB **02/18/19**
 TAT **G21**
 CALVING EASE
 ★★★★★

REMINGTON LOCK N LOAD54U
W/C BULLSEYE 3046A
 MISS WERNING KP 8543U

RYMO MR REDCOAT R33Y
TAC MS RED COAT E72
 TAC MS B60

REMINGTON ON TARGET 2S
 BAR15 MISS KNIGHT78E-51G
 WAGR DREAM CATCHER 03R
 MISS WERNING 534R
 GW RED COAT 099TS
 RYMO MISS T2 333N

ACT BW: 74 / 103 205 WT: 446 / 88 365 WT: 898 / 94

CE	BW	WW	YW	MCE	MLK	MWW	ST	DOC	CW	YG	MB	BF	RE	API	TI
14.7	-2.2	47.6	73.6	6.7	18.6	43.0	14.0	14.7	15.2	-0.50	0.09	-0.098	0.88	116.3	59.4
20%	10%	99%	95%	45%	80%	95%	70%	10%	95%	2%	90%	10%	10%	70%	90%

3/4 SM 1/4 AR ADJ IMF: 2.36 / 112 ADJ REA: 13.42 / 103
 WDA: 2.26

reference sire



W/C PINNACLE E80

REG
3336325

REMINGTON LOCK N LOAD54U
W/C LOADED UP 1119Y
AUBREYS BLACK BLAZE III

WAGR DREAM CATCHER 03R
MISS WERNING KP 8543U
MISS WERNING 534R

REMINGTON ON TARGET 2S
BAR15 MISS KNIGHT78E-51G
3C MACHO M450 BZ
BLAZE IV 1P
CNS DREAM ON L186
3C MELODY M668 BZ
R&R WAREHOUSE K609
MISS WERNING 934J

CE	BW	WW	YW	MCE	MLK	MWW	ST	DOC	CW	YG	MB	BF	RE	API	TI
15.4	-0.5	63.9	86.5	7.2	20.4	52.2	19.7	13.2	28.5	-0.55	0.03	-0.120	1.03	138.1	70.0
4%	10%	70%	90%	20%	65%	75%	20%	15%	50%	10%	50%	45%	15%	15%	45%

PB SM

PINNACLE SIRE GROUP Sell as lots 80-83

Pinnacle is a full brother to Bankroll and out of that same great Ms Werning cow as Bullseye. They have a lot of performance and natural thickness. Really good fronted cattle that have a really complete look to them.



LOT 80

80 TAC PINNACLE G160

REG
3692517
DOB
02/26/19
TAT
G160
CALVING EASE
★★

W/C LOADED UP 1119Y
W/C PINNACLE E80
MISS WERNING KP 8543U
WS BEEF KING W107
ES A63
EIR X210

REMINGTON LOCK N LOAD54U
AUBREYS BLACK BLAZE III
WAGR DREAM CATCHER 03R
MISS WERNING 534R
WS BEEF MAKER R13
WS MISS DREAMBOAT T17
OHRR DAKOTA COPPER 29K
EIR L211

ACT BW: 83 / 100 205 WT: 573 / 111 365 WT: 1043 / 107

CE	BW	WW	YW	MCE	MLK	MWW	ST	DOC	CW	YG	MB	BF	RE	API	TI
13.5	-0.4	71.5	98.2	7.5	21.6	55.0	19.8	10.7	23.4	-0.52	0.06	-0.085	1.15	128.6	70.3
30%	30%	25%	55%	30%	55%	50%	10%	60%	80%	2%	90%	15%	1%	40%	45%

3/4 SM 1/4 AR

ADJ IMF: 1.82 / 78 ADJ REA: 17.25 / 118
WDA: 2.63

81 TAC PINNACLE G216

REG
3692527
DOB
03/02/19
TAT
G216
CALVING EASE
★★

W/C LOADED UP 1119Y
W/C PINNACLE E80
MISS WERNING KP 8543U

REMINGTON LOCK N LOAD54U
AUBREYS BLACK BLAZE III
WAGR DREAM CATCHER 03R
MISS WERNING 534R
3C MACHO M450 BZ
GCF MISS MT-ZEL
CIRCLE S LEACHMAN 600U
K HEALY COW 714G

GCF BEYOND
KGH MISS BEYOND 384A
KGH 600 911J

ACT BW: 86 / 95 205 WT: 568 / 110 365 WT: 1033 / 106

CE	BW	WW	YW	MCE	MLK	MWW	ST	DOC	CW	YG	MB	BF	RE	API	TI
11.7	1.3	71.7	98.9	6.0	20.0	53.6	18.1	12.5	27.1	-0.43	0.04	-0.101	0.79	129.3	71.6
30%	40%	35%	55%	40%	70%	65%	40%	25%	60%	70%	45%	65%	65%	35%	35%

PB SM

ADJ IMF: 2.10 / 91 ADJ REA: 13.72 / 94
WDA: 2.59

82 TAC PINNACLE G238

REG
3692523

DOB
03/01/19

TAT
G238

CALVING EASE
★★

W/C LOADED UP 1119Y
W/C PINNACLE E80
MISS WERNING KP 8543U

REMINGTON LOCK N LOAD54U
AUBREYS BLACK BLAZE III
WAGR DREAM CATCHER 03R
MISS WERNING 534R

TAC MS EXCELLENCY B111

ACT BW: 83 / 101 205 WT: 491 / 95 365 WT: 921 / 95

CE	BW	WW	YW	MCE	MLK	MWW	ST	DOC	CW	YG	MB	BF	RE	API	TI
13.4	-0.4	59.5	83.7	6.4	20.7	68.8	17.0	12.1	25.4	-0.26	0.30	-0.064	0.53	130.6	67.9
30%	30%	70%	80%	50%	65%	2%	35%	40%	70%	45%	50%	30%	70%	35%	60%

1/2 SM 1/2 AN

ADJ IMF: 2.62 / 113 ADJ REA: 13.10 / 90
WDA: 2.30



ELM-MOUND/GS EO D336

83 TAC PINNACLE G199

REG
3694250

DOB
02/28/19

TAT
G199

CALVING EASE
★★

W/C LOADED UP 1119Y
W/C PINNACLE E80
MISS WERNING KP 8543U

REMINGTON LOCK N LOAD54U
AUBREYS BLACK BLAZE III
WAGR DREAM CATCHER 03R
MISS WERNING 534R

TAC MS EXCELLENCY B106

ACT BW: 89 / 205 WT: 454 / 365 WT: 915 /

CE	BW	WW	YW	MCE	MLK	MWW	ST	DOC	CW	YG	MB	BF	RE	API	TI
13.3	-0.2	61.9	88.2	6.4	21.1	68.8	17.0	12.1	25.4	-0.36	0.20	-0.077	0.74	126.4	67.2
35%	35%	65%	75%	50%	60%	2%	35%	40%	70%	20%	70%	20%	30%	45%	60%

1/2 SM 1/2 AN

ADJ IMF: 1.57 / 100 ADJ REA: 12.68 / 100
WDA: 2.26

85 TAC EO G574

REG
3694252

DOB
04/17/19

TAT
G574

CALVING EASE
★★

W/C EXECUTIVE ORDER 8543B
ELM-MOUND/GS EO D336
HILB DIRECT ME BABY A427

W/C UNITED 956Y
MISS WERNING KP 8543U
GLS NEW DIRECTION X184
SS BABYS BREATH P035
HTP/SVF DURACELL T52
KENCO MILEY COTTONTAIL

SS/PRS HIGH VOLTAGE 244X
TAC MS VOLTAAGE D466
TAC MS X1

ACT BW: 76 / 103 205 WT: 477 / 365 WT: 1066 /

CE	BW	WW	YW	MCE	MLK	MWW	ST	DOC	CW	YG	MB	BF	RE	API	TI
12.3	-0.4	64.5	91.8	5.3	22.2	63.1	13.1	9.9	18.8	-0.40	0.10	-0.093	0.65	124.7	71.4
45%	30%	55%	65%	70%	50%	10%	75%	70%	90%	10%	85%	10%	45%	50%	40%

3/4 SM 1/8 AR 1/8 CS

ADJ IMF: 1.99 / 100 ADJ REA: 13.06 / 100
WDA: 2.71



LOT 84



LOT 86

84 BFJV MR PROFIT G019

REG
3695472

DOB
01/05/19

TAT
G019

CALVING EASE
★

WS PILGRIM H182U
PROFIT
WAGR PANARAMA 204Z

CNS DREAM ON L186
WS MARLA 276M
MR HOC BROKER
3C MELODY M668 BZ

178A

ACT BW: 81 205 WT: / 365 WT: 1180

CE	BW	WW	YW	MCE	MLK	MWW	ST	DOC	CW	YG	MB	BF	RE	API	TI
7.2	2.8	62.6	87.2	3.2	22.1	70.2	13.8	6.3	22.9	-0.39	0.07	-0.098	0.66	110.7	64.6
95%	95%	60%	75%	95%	50%	2%	70%	95%	80%	15%	90%	10%	45%	80%	75%

1/2 SM 1/2 CS

ADJ IMF: / ADJ REA: /
WDA:

86 TAC JACKED UP G317

REG
3692518

DOB
03/15/19

TAT
G317

CALVING EASE
★★

TLLC ONE EYED JACK
TAC BLACK JACK E14
NLC Y232

LONG'S SHEAR PLEASURE
LONG'S MISS SWEET TREAT
MED ROCK EMBLAZON 702 707
NLC MELBOURNE MG120
ELLINGSON LEGACY M229
MS NLC MOJO S6119 B
HC POWER DRIVE 88H
TRIPLE C GO GIRL K34G

MR NLC UPGRADE U8676
GA AMERICAN GIRL 350A
TRIPLE C AMERICAN GIRL N

ACT BW: 80 / 103 205 WT: 452 / 87 365 WT: 886 / 91

CE	BW	WW	YW	MCE	MLK	MWW	ST	DOC	CW	YG	MB	BF	RE	API	TI
11.7	0.5	56.1	82.7	3.6	20.2	50.6	13.2	8.0	25.4	-0.41	0.28	-0.078	0.88	129.4	69.6
55%	50%	85%	85%	90%	65%	75%	75%	90%	70%	10%	55%	20%	10%	40%	50%

3/4 SM 1/4 AN

ADJ IMF: 2.57 / 111 ADJ REA: 15.03 / 103
WDA: 2.21

reference sire



WS PROCLAMATION E202

reference grand sire



CCR SANTA FE 9349Z

87 TAC PROCLAMATION G229

REG 3692514
DOB 03/01/19
TAT G229
CALVING EASE ★★

CCR COWBOY CUT 5048Z
WS PROCLAMATION E202
WS MISS SUGAR C4

PPCC MEYER 123Y
HLTS MS ZORO D233
MF COMPOSED

TRIPLE C SINGLETARY S3H
CCR MS 4045 TIME 7322T
CLRS GRADE-A 875 A
WS ANISE A71
MEYER RANCH 734 114
GLS FRONTIER N13
RHODES MINA N24

ACT BW: 86 / 91 205 WT: 525 / 101 365 WT: 941 / 97

CE	BW	WW	YW	MCE	MLK	MWW	ST	DOC	CW	YG	MB	BF	RE	API	TI
12.2	1.3	74.3	114.4	8.5	24.5	63.3	15.3	12.3	54.9	-0.36	0.30	-0.101	0.95	141.9	80.8
45%	70%	20%	20%	20%	30%	10%	55%	35%	1%	20%	50%	4%	5%	15%	10%

3/4 SM 1/8 AN 1/8 CS ADJ IMF: 2.10 / 91 ADJ REA: 14.90 / 102
WDA: 2.34

89 TAC SANTA FE G304

REG 3694253
DOB 03/15/19
TAT G304
CALVING EASE ★★

CCR SANTA FE 9349Z
SFG SANTA FE C558
SFG MAGGIE Y27

S A V FINAL ANSWER 0035
DJF A302
DOUBLE J MISS Y178

S D S GRADUATE 006X
CCR MS APPLE 9332W
HOOKS SHEAR FORCE 38K
SFG MAGGIE U63
SITZ TRAVELER 8180
S A V EMULOUS 8145
NICHOLS MANIFEST T79
DOUBLE J MISS U885

ACT BW: 85 / 97 205 WT: 474 / 365 WT: 988 /

CE	BW	WW	YW	MCE	MLK	MWW	ST	DOC	CW	YG	MB	BF	RE	API	TI
12.0	0.0	70.2	107.7	8.0	24.0	58.8	17.5	11.9	32.7	-0.24	0.15	-0.046	0.69	126.6	70.7
50%	40%	30%	30%	25%	35%	25%	30%	45%	40%	50%	80%	50%	40%	45%	45%

3/4 SM 1/4 AN ADJ IMF: 2.26 / 100 ADJ REA: 11.43 / 100
WDA: 2.47

88 TAC PROCLAMATION G187

REG 3692521
DOB 02/28/19
TAT G187
CALVING EASE ★★

CCR COWBOY CUT 5048Z
WS PROCLAMATION E202
WS MISS SUGAR C4

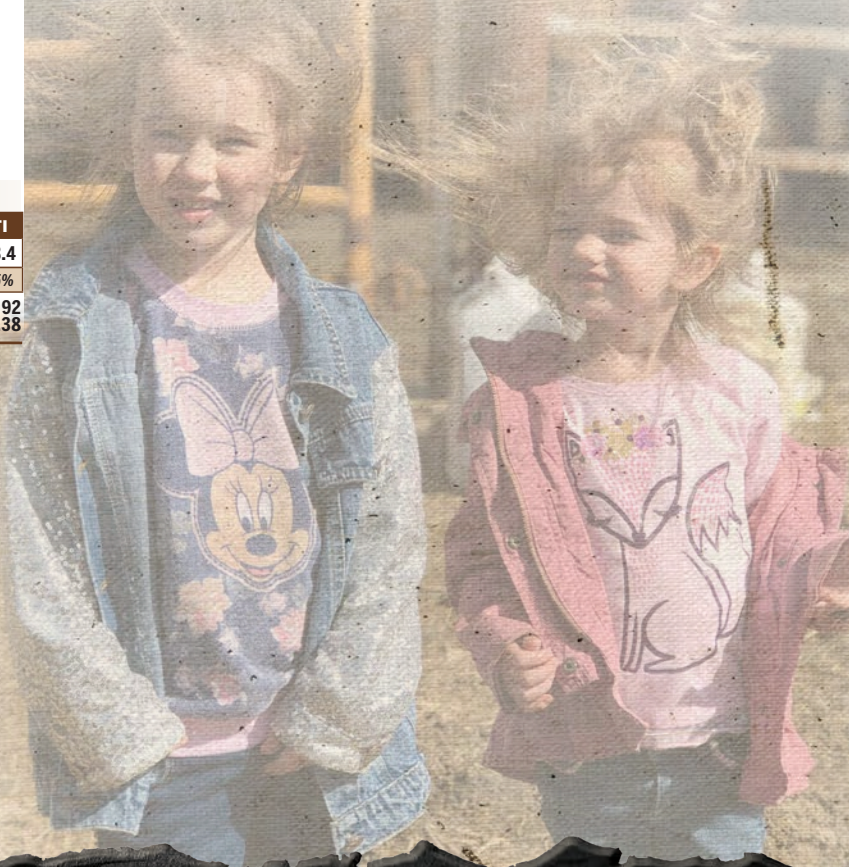
TAC MS EXCELLENCY B108

TRIPLE C SINGLETARY S3H
CCR MS 4045 TIME 7322T
CLRS GRADE-A 875 A
WS ANISE A71

ACT BW: 86 / 97 205 WT: 501 / 97 365 WT: 954 / 98

CE	BW	WW	YW	MCE	MLK	MWW	ST	DOC	CW	YG	MB	BF	RE	API	TI
14.8	0.2	68.5	107.2	9.4	24.8	59.5	10.5	13.0	47.3	-0.11	0.31	-0.034	0.57	123.5	73.4
20%	45%	35%	35%	10%	25%	25%	90%	30%	4%	90%	45%	65%	65%	55%	35%

1/2 SM 1/2 AN ADJ IMF: 1.63 / 70 ADJ REA: 13.48 / 92
WDA: 2.38



A

TA CATTLE

UNO MAS SIRE GROUP *Sell as lots 90-93*

Uno Mas is a bull we picked up from the Hudson Pines dispersal sale. The Dream On cattle have made great females throughout the years. Throwing Blockade into the picture on Lots 90 and 91 brings carcass with some extra thickness. Lots 92 and 93 also have a lot to offer. If it's red baldies that you're looking for, Lot 93 is the one for you.



90 TAC UNO MAS G127

REG 4230318
DOB 02/25/19
TAT G127
CALVING EASE ★★★

WLE UNO MAS X549
HPF UNO MAS 4D
TYLERTOWN MELTED

5L BLOCKADE 2218-30B
TAC MS BLOCKADE D174
TAC A132

CNS DREAM ON L186
SHAWNEE MISS 770P
W/C WIDE TRACK 694Y
FBFS YOU MELT ME 128Y
5L DEFENDER 560-30Z
5L OPAL 656-2218
LSF TAKEOVER 9943W
TBLC MISS 605 CHEYENNE 132

ACT BW: 75 / 205 WT: 508 / 365 WT: 928 /

HB	GM	CED	BW	WW	YW	MLK	ME	HP	CEM	ST	MB	YG	CW	REA	BF
40	49	10	0.7	69	102	19	1	6	8	0	0.26	0.00	13	0.19	-0.05
99%	23%	78%	88%	10%	24%	87%	57%	98%	33%	99%	82%	9%	77%	17%	1%

ADJ IMF: 3.08 / 124 ADJ REA: 14.14 / 110
WDA: 2.66 DAM'S MPPA: 97

50% AR 47.7% SM 2.3% XX

92 TAC UNO MAS G461

REG 4230316
DOB 03/28/19
TAT G461
CALVING EASE ★★★

WLE UNO MAS X549
HPF UNO MAS 4D
TYLERTOWN MELTED

LJC MISSION STATEMENT P27
TAC JACKIE A3-7R3
HATS JACKIE 7R3

CNS DREAM ON L186
SHAWNEE MISS 770P
W/C WIDE TRACK 694Y
FBFS YOU MELT ME 128Y
LJC LANCER 806
LJC HANNAH 106
RCC EVA'S CANYON M206
HATS JACKIE 1R4

ACT BW: 92 / 110 205 WT: 510 / 99 365 WT: 948 / 94

HB	GM	CED	BW	WW	YW	MLK	ME	HP	CEM	ST	MB	YG	CW	REA	BF
34	48	8	1.7	65	96	21	2	6	9	0	0.11	0.00	15	0.30	-0.07
99%	45%	93%	96%	20%	40%	74%	69%	98%	16%	99%	98%	9%	72%	7%	1%

ADJ IMF: 2.01 / 85 ADJ REA: 12.73 / 99
WDA: 2.77 DAM'S MPPA: 101

43.8% AR 47.7% SM 8.6% XX

91 TAC UNO MAS G144

REG 4230334
DOB 02/25/19
TAT G144
CALVING EASE ★★★

WLE UNO MAS X549
HPF UNO MAS 4D
TYLERTOWN MELTED

5L BLOCKADE 2218-30B
TAC MS BLOCKADE D174
TAC A132

CNS DREAM ON L186
SHAWNEE MISS 770P
W/C WIDE TRACK 694Y
FBFS YOU MELT ME 128Y
5L DEFENDER 560-30Z
5L OPAL 656-2218
LSF TAKEOVER 9943W
TBLC MISS 605 CHEYENNE 132

ACT BW: 76 / 205 WT: 486 / 365 WT: 915 /

HB	GM	CED	BW	WW	YW	MLK	ME	HP	CEM	ST	MB	YG	CW	REA	BF
40	49	10	0.7	69	102	19	1	6	8	0	0.26	0.00	13	0.19	-0.05
99%	23%	78%	88%	10%	24%	87%	57%	98%	33%	99%	82%	9%	77%	17%	1%

ADJ IMF: 1.90 / 76 ADJ REA: 11.54 / 90
WDA: 2.63 DAM'S MPPA: 97

50% AR 47.7% SM 2.3% XX

93 TAC UNO MAS G28

REG 3692524
DOB 02/15/19
TAT G29
CALVING EASE ★★★

WLE UNO MAS X549
HPF UNO MAS 4D
TYLERTOWN MELTED

RYMO MR REDCOAT R33Y
TAC MS RED COAT E197
X461

CNS DREAM ON L186
SHAWNEE MISS 770P
W/C WIDE TRACK 694Y
FBFS YOU MELT ME 128Y
GW RED COAT 099TS
RYMO MISS T2 333N

ACT BW: 73 / 105 205 WT: 539 / 107 365 WT: 936 / 98

CE	BW	WW	YW	MCE	MLK	MWW	ST	DOC	CW	YG	MB	BF	RE	API	TI
11.5	0.4	59.9	84.0	5.3	16.1	45.7	11.1	12.8	14.8	-0.33	0.17	-0.081	0.49	108.3	63.5
55%	50%	70%	80%	70%	95%	90%	90%	30%	95%	25%	75%	15%	80%	85%	80%

ADJ IMF: 2.26 / 108 ADJ REA: 12.17 / 93
WDA: 2.36

3/4 SM 1/4 AR

Top Dollar Angus Feeder Calf Program



Top Dollar Angus is a genetic-certification and marketing company focused exclusively on the top 25% of the industry in carcass and growth Angus and Red Angus-influenced feeder cattle. Top Dollar Angus is a program similar to other popular branded-beef programs, except that Top Dollar Angus does its branding in the feeder cattle and calf market.

Qualified herds must have two or more generations of Angus (Black or Red) genetics with growth and carcass traits objectively ranking in the top 25% of the breed based on documented historical sire use. DNA evaluation conducted by Zoetis or GeneSeek is another workable method to qualify. Once your cattle have met the necessary requirements, they will be marketed under the Top Dollar Angus brand and logo, and will be promoted aggressively to a large number of feed yards and buyers. In today's market, Top Dollar Angus cattle are seeing premiums ranging from \$30 to \$70 per head above the average market.

Why the premium? Cattle feeders know that Top Dollar Angus cattle perform better and have higher grid-based carcass rewards compared to other cattle. This puts more dollars per head into the cattle feeder's pocket, which can be passed back to the producer in the form of premiums paid above market price.



Jared Wareham,
general manager
660-492-2777

jared@topdollarangus.com



Kacey Jacobson,
field representative
701-391-4646

kacey@topdollarangus.com

www.topdollarangus.com

Top Dollar Angus helps take the guess work and surprises out of growing and feeding cattle. Feed yards are tired of unpredictable performance and wide-ranging profitability results from group to group on cattle they purchase. Cattle often look the same and have the same colored hides, but are very different genetically. That's why the genetic certification of high-end Angus and Red Angus feeder cattle is here! The industry must differentiate the best Angus and Red Angus genetics from average cattle, and that's what Top Dollar Angus will do for you!

If you have consistently invested in high-performance Angus or Red Angus genetics, Top Dollar Angus will make your cattle stand out from the pack and get you the premiums you deserve. No matter how you market your cattle, our goal is to create more demand and higher prices for your calves.



TA CATTLE
502 20 Road
Thurston, NE 68062



YOUR ONE STOP BULL SHOP

A TA CATTLE

ANNUAL BULL & FEMALE SALE / THURSDAY, APRIL 2, 2020

12:00 PM / WEST POINT LIVESTOCK / WEST POINT, NEBRASKA

RED ANGUS - BLACK ANGUS - SIMMENTAL - CHAROLAIS CROSS